

**WALKER  
DIRECTORY  
AND  
GUIDE  
1961**

**WALKER  
Air Force Base  
New Mexico**

Published by C. F. Boone Nationwide Publications, Inc., a private firm, in no way connected with the Department of the Air Force. Opinions expressed by the publishers and writers herein are not to be considered an official position by the Department of the Air Force. The appearance of advertisements in this publication does not constitute endorsement by the Department of the Air Force of the products or services advertised.



731 633-4570 633-2804

Valley

**CHEVROLET COMPANY**

**AUTHORIZED**

*Chevrolet*

**SALES**

**SERVICE**

★ Complete Body Shop

**FAMOUS OK USED CARS**

Repairs On All Makes

★ Wheel Alignment & Balancing

**6th & N. MAIN**

★ Painting & Repairing

**Used Cars - 1600 W. 2nd**

**MA 2-4100**



**SPECIAL MILITARY DISCOUNT  
ON ALL COLT SIDEARMS**

**FIREARMS  
INTERNATIONAL**

**THE HOUSE OF GUNS  
BUY - SELL - TRADE - REPAIR**

**LOANS MADE ON GUNS**

Foreign and Domestic Ammunition — Ammunition Loading Equipment  
Military Supplies — Sporting Equipment — Hardware  
Prospecting and Camping Equipment

**HOUSE OF 1,000 BARGAINS**

**110 N. Main**

**ARMY-NAVY SURPLUS**

**MA 2-0680**

**Star RADIATOR**  
**MUFFLER SERVICE**  
Guaranteed Life of Car

**714  
So. Main**

**Scott D. Miller**

**Phone  
MA 2-8230**



Furr's Super Markets are your headquarters in Roswell for low prices on every item in your pantry shelf. Shop Furr's for the finest meats, produce, canned goods and dairy products and receive the added bonus of Frontier Saving Stamps.

**Two Locations in Roswell . . .**

**601 West 2nd**

**1010 South Main**

**BROADMOOR SHOPPING CENTER**



## WALKER BASED AIRCRAFT



H-19B



C-123



T-33

### 6th Combat Support Group



B-52



KC-135

### 6th Bombardment Wing

### 6th Air Refueling Squadron

The *WALKER DIRECTORY AND GUIDE* is an unofficial publication compiled for the use and information of the military and civilian personnel of Walker Air Force Base and is distributed to them free of charge.

This Directory is published by C. F. Boone Nationwide Publications, a private concern, and the information contained herein, being provided by C. F. Boone Nationwide Publications, is not to be considered an official expression of the Department of the Air Force or Walker Air Force Base. The appearance of advertisements does not constitute an endorsement by the Department of the Air Force or Walker Air Force Base of the products or services advertised.

All rights reserved and copyrights applied for. No portion of this publication may be reproduced without permission of the copyright owners. Information concerning *WALKER DIRECTORY AND GUIDE* is available from our main editorial office located at 4007 Avenue A, Lubbock, Texas.

## Quick Reference Numbers

Aircraft Crash	2222	Information Services Office	690
Air Police	2000	Motor Pool Dispatcher (After Duty Hours Dial 2345)	367
Ambulance	2333	NCO Club	687
Base Housing	565	Officer's Club	532
Base Locator	745	OSI	312
Base Operations	538	Red Cross (After Duty Hours Dial "O")	625
Bowling Alley	638	Retention	2091
Chaplain	2111	Separation	306
Commissary	602	Staff Duty Officer	409
Credit Union	2886	Telephone Trouble Report	554
Family Services	402	Theatre	440
Fire	333	Utilities Repair (After Duty Hours Dial 710)	381
Hospital	361		



**THEATRES—DRIVE-IN**

Ballojak Theatre  
Air Base Road ..... MA 2-5214  
(see our ad this classification)

Starlite Theatre  
New Dexter Highway ..... MA 2-5213  
(see our ad this classification)

**TRAILER SALES**

**ROSWELL TRAILER SALES**

**10% DOWN — BANK FINANCING**

New & Used Mobile Homes  
Parts - Repair - Insurance

500 S. Main ..... MA 3-0152

**VETERINARIANS**

Webster's Animal Hospital  
1138 West Hobbs ..... MA 2-3700  
(see our ad this classification)

**SHOP THE  
YELLOW  
PAGES**

**BAR**

COCKTAIL  
LOUNGE



PACKAGE  
GOODS

**COLONIAL CLUB**

Two American Shuffle Boards for Your Enjoyment  
Raymond & Dorothy Jones

419 East Second ..... MA 2-9465

*The Warmest WELCOME In Roswell  
For All Walker A.F.B. Personnel*

**DOWNTOWN THEATRES**

• PLAINS	• YUCCA
112 N. Main	124 W. 3rd
MA 2-5311	MA 2-5312

**DRIVE-IN THEATRES**

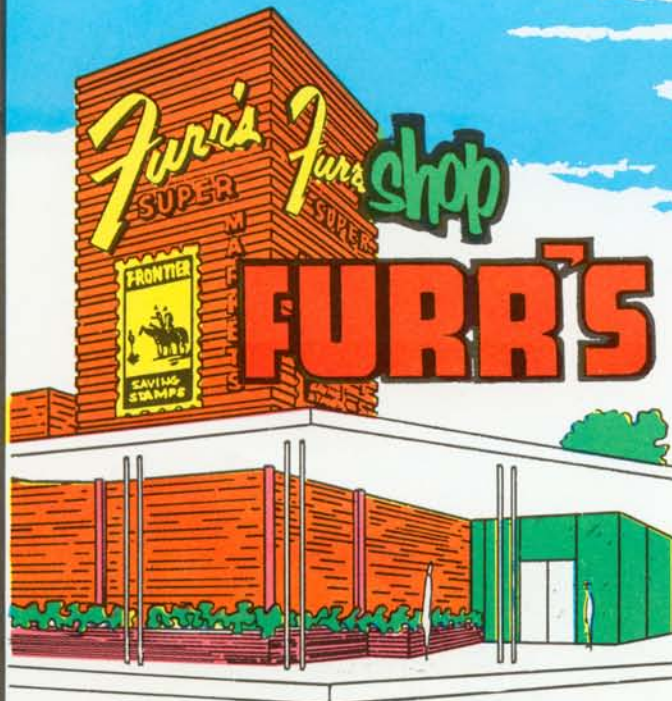
• STARLITE Big Twin	• BALLOJAK
New Dexter Hwy.	Air Base Road
MA 2-5213	MA 2-5214

**WEBSTER'S HOSPITAL FOR ANIMALS**

Dr. Chas. Webster, Jr. D.V.M.	Complete Veterinary Services
Dr. Bob Bond D.V.M.	Bathing & Clipping
	All-Weather Boarding Facilities

1138 West Hobbs ..... MA 2-3700

Two Locations in Roswell . . .



**601 West 2nd**

**1010 South Main**

BROADMOOR SHOPPING CENTER



Furr's Super Markets are your headquarters in Roswell for low prices on every item in your pantry shelf. Shop Furr's for the finest meats, produce, canned goods and dairy products and receive the added bonus of Frontier Saving Stamps.

# 47th Air Division



BRIG. GEN. WILLIAM R. YANCEY  
COMMANDER  
47th Air Division

The 47th Air Division, now with headquarters at Castle Air Force Base, Calif., was activated at Walker in 1951. Its mission was to organize and train a bomber force capable of immediate long-range offensive operations anywhere in the world.

Presently commanded by Brigadier General William R. Yancey, the division has the dual responsibility of training all Strategic Air Command B-52 and KC-135 crews and maintaining combat ready forces at Castle and Walker Air Force Base.

From the time of activation until the present, the 47th Air Division has set an example for other SAC units to follow. Close coordination and teamwork have produced results in which personnel of the 47th can take pride.



COLONEL DONALD E. HILLMAN  
COMMANDER  
6th Bombardment Wing



## 6th Bombardment Wing

The 6th Bombardment Wing has a long and noteworthy history. The unit, originally known as the 3rd Observation Group, was organized at France Field, Canal Zone, on 30 September 1919. In May 1921, it was redesignated as the 6th Observation Group. Then in June 1922, it was again redesignated, this time as the 6th Composite Group. It was first designated as a Bombardment Group on 1 September 1937. From its organization until November 1943, its mission was the defense of the Panama Canal.

The 6th Bombardment Group served in the Pacific Theater during World War II and participated in the great Tokyo "fire raids." On 23 and 25 May, 1945, the group accompanied a massive B-29 force (a total of 1064 aircraft) in two strikes which succeeded in writing Tokyo off the agenda as a target for area bombing. For the raid of 25 May, the group received its first Distinguished Unit Citation. Aircraft from the 6th Group participated in mining missions in the Rashin, Korea port area, which were said to have been the longest missions flown by any aircraft in World War II (2050 miles from their home base, Tinian Airfield).

After World War II ended, the group was sent to the Philippine Islands and remained there until June 1947, when it was moved to Okinawa, and deactivated in October 1948.

The group was reactivated at Walker Air Force Base, New Mexico on 2 January 1951 and became a part of the 6th Bombardment Wing, which was activated on that same date. In August 1952, the 6th Wing received its first B-36 aircraft and for a period of five years these huge "Peacemakers" played an important part in the Strategic Air Command's deterrent role. In December 1957, the wing received B-52 aircraft to replace the B-36's. In April, 1958, the 6th Air Refueling Squadron received its first KC-135 tanker aircraft. The wing is now equipped with these two jet aircraft, the B-52 bombers and KC-135 tankers.







#### BASE OPERATIONS

### *6th Combat Support Group*

The 6th Combat Support Group commanded by Col. Roderick D. O'Connor, has the responsibility of providing support for the 6th Bombardment Wing and tenant units.

The 812th Air Base Group was organized at Walker on 8 August 1952, to provide base functions for the 509th and 6th Bombardment Wings, under the auspices of the 47th Air Division. Its first commander was Col. Clifford V. Warden.

Support activities are conducted through the new concept of deputy commanders working under the base commander. Services, Materiel, Operations, Civil Engineering and BDCL are the five areas of responsibility for the 6th Combat Support Group.

Since being named as a permanent installation, the facilities for housing and support of base personnel and aircraft have been gradually replaced with new modern structures providing more efficient operation.



COLONEL RODERIC D. O'CONNOR  
BASE COMMANDER



CAPT. ROBERT C. GEPPINGER  
COMMANDER AACs



## *2010th Communications Squadron (AFCS)*

The 2010th Communications Squadron was activated and assigned to Walker AFB in October 1954. It has the responsibility for the management, operation and maintenance of the local portion of the USAF system of airways communications and ground communications facilities that support the military aircraft assigned to Walker Air Force Base. The facilities include: an Airport Traffic Control Tower, a Radar Approach Control, TACAN, UHF-DF, UHF Omni-Range, Instrument Landing System, and in addition is responsible for maintaining the teletype and pilot to forecaster equipment assigned to the base weather facility.

Under the command of Capt. Robert C. Geppinger, the squadron is also responsible for the operations of two detachments. Detachment 2, Reese AFB, Texas, and Detachment 3, Webb AFB, Texas.

Walker RAPCON controls all aircraft, both military and civilian, flying within 30 miles of Walker when on instrument flight plans. As an aid to separating these planes, both surveillance and precision radar is

used. The surveillance type radar normally shows all aircraft within 40 miles and from the ground up to 14,000 feet. The precision radar is a highly accurate radar used to guide pilots to a safe landing when the runway can't be seen due to fog, blowing dust, or low clouds. When the precision radar is in use, the radar operator can accurately judge an aircraft position to within 6 feet when near the touchdown point.

Walker Control Tower separates aircraft from one another in and near the traffic pattern and from hazards on the ground. The facility usually handles more than 6,000 flights a month. It is responsible for issuing the clearances for take-offs and landings or making low approaches, plus relaying information needed by pilots regarding weather, traffic advisories, and unusual conditions that might affect the safety of the flight. The Tower Controllers initiate the emergency alarm system that warns the base concerning an impending emergency.





... West of the Pecos

# Walker Directory and Guide

## INDEX

### SECTION I

<i>Alphabetical Order</i> .....	<i>Page</i>
Area Guide .....	23-30
Base Exchange .....	14
Base Map .....	22
Bowling .....	20
Clubs .....	14-15
Dining Halls .....	16
Family Services .....	16-17
2010th Communications Squadron .....	6
40th Bombardment Squadron .....	8
4129th C C Training Squadron .....	8
47th Air Division .....	3
General Information .....	11-12
Golf .....	20
History .....	2
Housing .....	18
Medical Aid .....	19
Monjeau Retreat .....	17

New Mexico Section .....	23-25
Nursery .....	16
Post Office .....	20
	Inside
	Front
QUICK REFERENCE NUMBERS .....	Cover
Religious Services .....	13
Roswell (City Map) .....	29
Roswell Guide Section .....	26
School (Base) .....	17
6th Air Refueling Squadron .....	9
6th Bombardment Wing .....	4
6th Combat Support Group .....	5
686th AC&W Squadron .....	7
Swimming Pools .....	20

### SECTION II

*Personnel Listings*

### SECTION III

*Classified Section*

## History of Walker AFB

Just before the start of World War II, the War Department decided to open a flying school near Roswell, New Mexico. The citizens of the community raised \$35,000, purchased several thousand acres of land, and donated it for the school. Construction was under way early in 1942.

Today after several changes in name and purpose, the original flying school is a permanent installation of the Air Force.

The decision to construct a flying school in the Roswell area was based on the same reasons that have brought many residents to this part of New Mexico. The low precipitation, high visibility and lack of fog, make the area an ideal site for air operations on a daily basis.

The Roswell Army Flying School became successively the Roswell Army Air Field and the Roswell Air Field. It was finally named Walker Air Force Base in 1948, honoring Brigadier General Kenneth N. Walker.

The first class graduated from the Roswell Army Flying School in July 1942. By 1943, B-17 transition training was begun at the base. The atom bomb dropping 509th Composite Group came to Walker in 1945, changing the base mission to support the nation's strategic retaliatory force. The 509th brought with them the B-29 Superforts. The unit soon converted to B-50s and later to the sleek B-47 Stratojet.

In 1951, the 47th Air Division was formed at Walker, controlling the 509th and the recently re-activated 6th Bombardment Wing. The 6th arrived with B-29s and was equipped with the B-36 Peacemaker 19 months later. The 509th departed Walker in 1958, shortly after the 6th became an all jet unit with its present B-52 Stratofortresses and KC-135 Stratotankers.

At present, Walker fulfills three roles for the Air Force. It is a training base for SAC B-52 and KC-135 aircrews, a combat ready base with the 4129th Combat Crew Training Squadron, the 686th Aircraft Control and Warning Squadron, and the Walker Field Office of AFBSD.



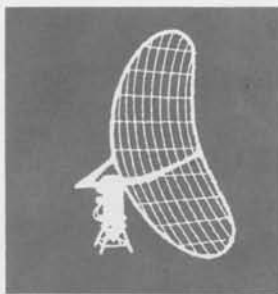
BRIGADIER GENERAL KENNETH N. WALKER

Brigadier General Kenneth N. Walker was born July 7, 1898, in Cerrillos, New Mexico, and became a flying cadet in World War I. As a second lieutenant his first station was Mather Field, Calif. He also served at Brooks and Barron Fields in Texas, Fort Leavenworth, Kan., and Post Field, Oklahoma. He was commanding officer of air intelligence in the Philippines in 1922. He returned to the U. S. in 1925 and graduated from the Air Corps Technical school at Langley Field, Va. Later he served as operations officer and commanding officer of numerous bomb units and was an instructor at the Air University, Maxwell Field, Ala. After a tour in Hawaii and one at USAF Headquarters, he was transferred to New Guinea in 1942 as a brigadier general. The general died while leading a daylight bombing attack against shipping in the harbor at Rabaul, New Britain. His aircraft was disabled and forced down by an overwhelming number of enemy fighters. For his actions, General Walker received the nation's highest fighting honor, the posthumous award of the Congressional Medal of Honor.



PHOTO RIGHT—General Walker and a Curtiss JN4D





## 686th AC&W Squadron

This organization began its existence as the 120th ACWRON of the Arkansas National Guard. The 120th ACWRON was organized and federally recognized on 28 June 1950, at Little Rock, Arkansas. The unit performed weekly drill at the National Guard hangar at Adams Field in Little Rock and held a summer encampment in August of 1951.

On 1 October 1951, the 120th was ordered into active military service and shortly afterwards was transferred to Geiger AFB, Spokane, Washington. Its primary mission was to conduct the training necessary to operate an early warning site in the Air Defense Command. The strength of the unit at this time was 15 officers and 102 airmen. The commander was Lt. Col. Richard N. Moore.

In January, 1952, the 120th was transferred to Fort Stevens, Oregon, to undergo further training. During this period the unit began to lose personnel by reassignment to the Far East. An early loss was the Commander, Lt. Col. Moore.

In April, the unit was certified as operational and transferred to another station within the Western Air Defense Force. At the same time the unit was reduced in strength to 5 officers and 45 airmen. Personnel shipments thus broke up the original group of National Guard men.

During the latter part of June the squadron was informally notified that its new duty station was Walker Air Force Base, New Mexico. On 13 September, 1952, at 0730 hours, the 120th ACWRON became fully operational as an early warning station at Walker Air Force Base, Roswell, New Mexico.

In February, 1953, the 120th, along with six other units of the 34th Air Division, was transferred from the Western Air Defense Force to the Central Air Defense Force.

As of July 1953, almost three quarters of the personnel were Regular Air Force Men; the remainder of the Arkansas Air National Guard personnel were to be relieved from active duty by October 1st.



LT. COL. B. B. BILBY  
COMMANDER



On the 29th of September, 1953, the 686th ACWRON was organized with Captain Cecil C. Spencer, Jr., as Commander. Total strength was 2 officers and 37 airmen. On 1 October, 1953, the 120th ACWRON was deactivated.

In August, 1954, Major Grant H. Wilson assumed command. He, in turn, was succeeded by Lt. Col. Theodore C. Hoffman in September 1956. Lt. Col. William R. Crooks succeeded Colonel Hoffman on 15 April, 1958.

Lt. Col. William R. Crooks remained Commander until 10 June 1959. He was succeeded by Lt. Col. Bunn Hearn, Jr., on 9 July, 1959, and Lt. Col. B. B. Bilby became CO on Nov. 11, 1960.



LT. COL. W. H. COX  
COMMANDER  
24th Bombardment Squadron



## 24th Bombardment Squadron

The activities and mission of the 24th Bombardment Squadron are twofold, with both goals being equal in importance. Also the unit is engaged in the task of maintaining a status of combat readiness through training and study. The squadron's primary role is training student crews in the CCTS program and advancing them to a proficiency level of solo status in the B-52 type aircraft.



## 39th Bombardment Squadron

The mission of the 39th Bombardment Squadron is the training of personnel for combat preparedness and the maintenance of a high grade of proficiency in the diversified skills necessary for the successful accomplishment of a specific wartime mission.



LT. COL. LEE McCLENDON  
COMMANDER  
39th Bombardment Squadron



LT. COL. ARTHUR S. PITTS II  
COMMANDER  
40th Bombardment Squadron



## 40th Bombardment Squadron

The mission of the 40th Bombardment Squadron, Heavy, Jet, is to train and develop student crews to highly disciplined and qualified aircrews in the B-52 type aircraft, capable of upgrading to Combat Ready status. Also train, administer and support permanently assigned Combat Ready Crews, capable of immediate and sustained long range offensive bombardment operations on a global scale, utilizing the latest technical knowledge and advanced weapons, as a part of SAC's deterrent force.





Long-range view toward the northwest shows Capitan Mountain towering over the Base Chapel and old BOQ buildings.

## *General Information*

### **Processing**

PERMANENT PARTY OFFICERS reporting to Walker will sign-in at Wing Headquarters, Bldg. 812. Enlisted personnel sign-in at Pass and Identification, located at the main gate. Centralized processing is done in Bldg. 616. Training personnel reporting to the 4129th Combat Crew Training Squadron will report direct to that organization's orderly room in Bldg. 505.

### **Duty Hours**

NORMAL DUTY HOURS at the base are 0730 to 1630 during the entire year. Normal work week is Monday through Friday. A one-hour lunch period is allowed.

### **Transportation**

PERSONNEL ARRIVING IN ROSWELL by commercial carrier may obtain transportation to the base by calling FIreside 7-5411, Ext. 367. Commercial bus service is operated between Roswell and Walker AFB on a 45-minute interval schedule. Military taxi service for on-base use may be reached by calling Ext. 369.

### **Military Courtesy**

Saluting and other military courtesies, together with emphasis on proper wear of the uniform, are the result of many centuries of tradition among military men. Sometimes they may seem burdensome, but we always feel better for observing them. Have you noticed that the man who can be depended on to render a smart salute and wear his uniform flawlessly can almost always be depended on to do the rest of his job in an admirable manner?

### **Uniform**

CLASS "A" OR "B" UNIFORMS are normal wear, except when performance of duty calls for fatigues. Optional periods of wear are provided twice each year when changing from summer to winter uniforms. Personnel living in Roswell may wear fatigues to duty from their residence and return only. Civilian clothing is appropriate for all other occasions other than when directly pertaining to duty performance. NCO and Officer Clubs set their own standards of dress.



Walker-based C-123 squats heavily on runway with full cargo load.

## *General Information (Continued)*

### **Base Security**

CONSTANT VIGILANCE is everyone's responsibility. Since we are a combat-ready SAC base, your active participation in safeguarding our aircraft and equipment is essential.

THE COMBAT DEFENSE FORCE uses every means available to insure security, but your help and cooperation are needed to fill the gaps. Respect their authority and cooperate in wearing flight line badges and observing posted restricted areas. It will be for your benefit.

SENTRY DOGS are used on patrols around the flight line area. These animals are trained to distrust all persons except their handlers. Do not approach these dogs unless performance of your duty demands it and then follow the instructions of the handler.

SECURITY ACTIVITIES are a daily part of your job. To become fully familiar with your responsibilities, call on your unit Security Officer. He will assist you and answer any questions you have regarding security.

### **Base Deputy Commander For Security and Law Enforcement**

For any information pertaining to Security or Law Enforcement, contact the Deputy Commander for Security and Law Enforcement, extension 316 or 2047, Bldg. 610, Room 204A.

### **Base Police Regulations**

VEHICLES—WHEN YOU ARRIVE at Walker you will be required to register any vehicle that will be operated by you or your dependents on base. Adequate insurance is required for operation of the vehicle on base. Registration is done at the Pass and Registration Building near the Main Gate.

SPEED — SPEED LAWS are strictly enforced on base. Speed limit is 20 mph in most areas. Housing areas and zones where children are at play are limited to 15 mph. Flight line speeds vary depending on the area, but are generally posted at 15 mph. Traffic lights control traffic flow at critical points and change their type of operation at different times of the day. 50 mph is enforced on the base highway between Roswell and Walker.

WEAPONS — ALL PRIVATELY OWNED firearms are required to be registered with the base police. Firing of weapons on base or in the immediate vicinity is prohibited.



# Base Services

WALKER BASE SERVICES are listed on the following pages in alphabetical order with the exception of the Religious Services which are listed first.

## Religious Services

THE MODERN BASE CHAPEL AND ANNEX, Chapel #1, is located on the corner of Martin and D Streets across from the parade grounds in front of wing headquarters. Another modified cantonment type Chapel, Chapel #2, is located on the corner of Third and C Streets. All military and civilian personnel and families are invited to participate in any and all facets of the Chapel Program. The base has an authorization of seven chaplains: four Protestant, two Catholic, and one Jewish.

Regularly scheduled meetings of Catholic and Protestant ladies and men are held in the Chapel Annex. There are also usher, acolyte, and youth programs, Bible and religious instruction classes.

### Protestant activities:

Sunday Worship: 0830 and 1100 Base Chapel

Sunday School: 0930 Elementary School

Choir Rehearsals: (Thursday)  
1800 Cherub (age 5 thru 2nd Grade) Base Chapel  
1830 Junior (3rd Grade thru Jr. High) Base Chapel  
1830 Adult Base Chapel

Communion Services are held on the first Sunday of each month.

Vacation Bible School is held each year.

### Catholic activities:

Sunday Masses: 0730, 0930 and 1230 Base Chapel

Daily Mass: 1145 Base Chapel

Novena: 1900 Tuesday Base Chapel

Confessions: 1900 to 2100 on Saturday and before each Mass

Religious School Instruction: 1030 Sunday Elementary School



### Base Chapel

#### Jewish activities:

Sabbath Services: 2000 every other Friday Base Chapel  
2000 every other Friday Roswell Synagogue

Oneg Shabbat: Following each Base Sabbath Service.

Religious School: 1000 Sunday Base Chapel Annex  
Free nursery services are provided at the Base Nursery for all services.

## Aero Club

THE WALKER AERO CLUB is a growing organization and invites all personnel interested in light planes to join its members in some enjoyable low cost flying. Eligible to join are all active and retired military personnel and dependents, civilians employed by the Air Force and military personnel of foreign governments on duty with the Air Force. Initiation fee is \$15, with dues of \$5 monthly. Dependents can join with no initiation fee and dues of \$1 a month.

The club has two Cessna 150 trainers, six cross-country type aircraft which include one Cessna 182, two Cessna 172s, two Navions, and one T-34.

The aero club offers members a chance to learn to fly and obtain an FAA license cheaper than with instruction and aircraft costs with even civilian aero clubs. An organized ground school is conducted by a licensed instructor to prepare members for solo flight and private pilot examination. Available also is a ground school to prepare military pilots for the FAA Military Competency Examination for commercial license.

The club site is west of the big hangar. For information talk to any member or call the site at extension 2754.



Base Chapel interior.

## Air Force Aid Society

MILITARY PERSONNEL DESIRING information on the Air Force Aid Society should contact the Personal Affairs Office, located in Room 9 of building 616. This office is open during normal duty hours. Telephone extensions are 2245 and 754.

## Banking

A BRANCH OFFICE of the Roswell State Bank is located in Bldg. 830. Hours of operation are from 0900 to 1300 during the summer and from 1000 to 1400 during the winter.



View of a portion of the main sales store, Base Exchange.

## Base Exchange

TWO RETAIL STORES, a cafeteria, service station and other concessions are operated by the Base Exchange. Only persons with exchange privileges and identification are authorized to make purchases or use exchange facilities. Locations and hours of operation are as follows:

Main Store — Bldg. 815	
Monday-Friday .....	0930-1730
Saturday .....	0900-1300
Toys and Outdoor Equipment Annex — Bldg. 822	
Monday-Friday .....	0930-1730
Saturday .....	0900-1300
Cafeteria — Bldg. 545 (Temporary)	
Monday-Friday .....	0700-2130
Saturday .....	0700-1300
Sunday .....	0900-1300
Service Station — Bldg. 823	
Monday-Friday .....	0700-1730
Saturday .....	0800-1300
Refreshment Mart — Bldg. 501	
Daily .....	0830-2300
Barber Shop — Bldg. 815 & Bldg. 915	
Monday-Friday .....	0800-1730
Saturday .....	0730-1300
Cleaners-Laundry — Bldg. 829	
Monday-Friday .....	0700-1700
Saturday .....	0730-1300
Beauty Shop — Bldg. 815	
Mon., Wed., Thurs., Fri. ....	0730-1630
Tuesday .....	0730-1800
Saturday ..	0800-1300
Watch Repair — Bldg. 815	
Monday-Friday .....	0930-1730
Saturday .....	0900-1300

## Civilian Personnel

THE CIVILIAN PERSONNEL OFFICE guides management officials in the functions of recruiting, training, position classification, employee relations, promotions, incentive awards, and adverse actions of employees. It furnishes counseling of employees in plans for career development, retirement and resignation in addition to personal matters. Contractor personnel and employees paid from non-appropriated funds are not included in the functions of the office. Employment information is available in building 908, or may be obtained by calling extension 2196.

## Clothing Sales Store

A COMPLETE LINE of clothing for military personnel is offered by the clothing sales store located in Bldg. 827. Hours of operation are: Mon.-Fri., 0900 to 1400; paydays, 0900 to 1700. Phone is Ext. 460.

## Clubs

**SERVICE CLUB**—An ultra modern two-story Service Club is located west of the airmen dormitories, overlooking the Airmen's Swimming Pool. The club sponsors a complete program of entertainment and services for all military personnel, dependents and guests, seven days a week.

Facilities include sound-proof music rooms, listening booths for records, TV and movie room, table tennis, a spacious ballroom, snack bar, reading lounge, photo lab, an arts and crafts shop, and game room with snooker and billiard tables.

Services include musical instruments and slide and movie projectors for check-out, tape recorders for use in the club, table games, free stationery, on and off-base recreation information, paging service, daily newspapers and current magazines, and gift wrapping.

The entertainment program covers minor sport tournaments, chess club, dances, floor shows, talent contests, tours of local areas of interest, monthly birthday parties, carnivals, camera club, arts and crafts, square dance club, jam sessions, card tournaments, and lessons in both square dancing and ballroom dancing.



Shown above is the new Community Center completed September 1960.



## 6th Air Refueling Squadron



The 6th Air Refueling Squadron was activated at Walker as the 307th Air Refueling Squadron in 1951. It was transferred to Bergstrom Air Force Base, Texas, in 1952 as the 27th Air Refueling Squadron. It returned to Walker as the 6th Air Refueling Squadron early in 1958. Its mission is to provide CCTS training for KC-135 jet tanker crews (pilots, navigators, and refueling boom operators). Lt. Col. Donald W. Brookie has commanded the squadron since March 1960.



LT. COL. DONALD W. BROOKIE  
COMMANDER  
6th Air Refueling Squadron

## 4129th Combat Crew Training Squadron



The 4129th Combat Crew Training Squadron is directly responsible to the Deputy Commander for Operations for all policies, procedures and directives related to training of SAC-assigned student officers and airmen in the flight operation of the B-52 and KC-135 aircraft. The squadron is responsible for conducting the full B-52G Difference Academic Training for those aircrews designated for assignment to B-52G using organizations.

All administrative functions pertinent to operation of the training such as incoming and outgoing processing, student administration, student finance, locator, records keeping and security are directly under the 4129th.



LT. COL. W. E. CLARK  
COMMANDER  
4129th Combat Crew Training Squadron



COLONEL ROBERT I. BARROWCLOUGH  
SATAF COMMANDER

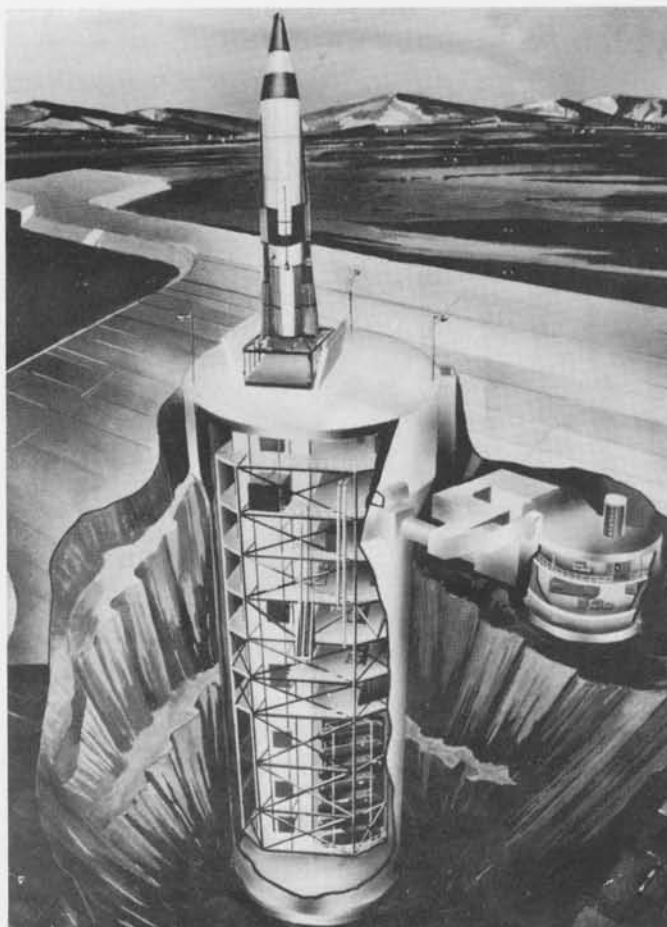
## *Site Activation Task Force SATAF Walker*

SATAF Walker, commanded by Colonel Robert I. Barrowclough, is a detachment of the Ballistic Systems Division of the Air Force Systems Command, Inglewood, California. It has the job of seeing that the twelve (2) Atlas missile launch complexes around Roswell are built to specifications and turned over to SAC in an operational condition as soon as possible. Military and civilian personnel of the Air Force and the Army Corps of Engineers make up the task force.

Construction of the launch facilities is being done by the Macco-Kaiser-Raymond-Puget Sound Bridge combine, whose contract is administered by the Corps of Engineers. When facility construction is complete, installation and checkout of the Atlas weapon system will be undertaken by the integrating contractor, Convair Astronautics. Assisting in the I&C tasks will be the following associate contractors: American Bosch-Arma Corporation for guidance, General Electric for re-entry vehicles, Rocketdyne Division of North American Aviation for propellant systems, and Kellogg ITT for communications.

ICBM Atlas, built by Convair Astronautics in San Diego, California, is designed to deliver a thermonuclear warhead more than 6,000 miles. It is 75 feet long and 10 feet in diameter. The rocket engines burn liquid oxygen and RP-1, a kerosene like fuel. The launch facilities will be of the "hardened" type. A 175-foot underground silo will house each missile. Launch crews will occupy underground Launch Control Centers connected to each silo by a tunnel. An elevator will raise the missile to ground level for firing.

ATLAS "F" LAUNCH SILO





**OFFICERS' CLUB** — The recently completed Officer's Open Mess is located on the corner of Martin and C Streets. Offering many hours of enjoyment and relaxation, the Officers' Club is the hub of social activities for officers and their ladies.

Operating hours: Mon.-Fri. One hour prior to normal duty time to 0020 hours.

Saturday ..... 1200 to 0230 hours

Sunday and Holidays ..... 1200 to 2330 hours

Dining Room — Breakfast one hour prior to duty.

Lunch ..... 1100 to 1330 hours

Dinner ..... 1700 to 2100 hours

Proper dress is as follows: Military class A or civilian shirt, tie and coat after 1900 hours in the main club; informal attire proper at all times in the snack bar and game room.

Parties may be arranged by contacting the club secretary at Ext. 2530 or 2543, during normal duty office hours, 0900 to 1730 Mon.-Fri.

**NCO CLUB** — The NCO Club is located in Bldg. 838 and the telephone is Ext. 687. A varied program is offered with informal dancing held each Friday, Saturday and Sunday night. The Club is open for squadron and other parties Monday through Friday.

Operating Hours:

Sunday - Thursday ..... 0700 to 2400 hours

Friday - Saturday ..... 0700 to 0100 hours

**OFFICERS' WIVES' CLUB** — The Officers' Wives' Club at Walker is very active and sponsors three functions each month. At an informal coffee in the first part of the month, newcomers are greeted. The following week a luncheon is held with a delectable menu and an interesting program. Games day is of interest to wives who play bridge, canasta or pinochle. Branches of the Officers' Wives' Club are the Saddle, Golf and Bowling Clubs. The Red Cross gives a Gray Lady course each year. At Walker too, are the Garden Club and Toastmistress Clubs. The groups are supported by an enthusiastic response and an eagerness for new members and friendships.

**NCO WIVES' CLUB** — A warm welcome awaits any wife of a non-commissioned officer, extended by the NCO Wives' Club. A newcomers' coffee is scheduled on the first Monday of each month at 0930 in the NCO Club. The following Monday a luncheon and business meeting is held. On the third Friday each month a social is held, with the entertainment directed toward the male side of the family. The fourth Monday each month is card day.

**THE AIRMEN'S WIVES' CLUB** — The Airmen's Wives' Club meets on the first and third Tuesdays of every month at the base Service Club. The meetings consist of a short business session followed by refreshments and social activity. Other functions throughout the year include picnics, seasonal parties, luncheons, and dinners. Newcomers are welcome at all meetings and are urged to come whenever they can. Free nursery service and rides will be provided for all members who wish to attend any club activity. Further information may be obtained by calling the service club, extension 492, or the social chairman at FI 7-5709.



Officers' wives activities make good use of the new Officer's Club, which was completed in 1959.



Noncommissioned Officers' Club

## Commissary

THE BASE COMMISSARY is located in the south portion of building 112 on the east side of the base. Hours of operation are: 1000-1730, Tuesday, Wednesday, Thursday and Friday. 0900-1300 Saturday. Payday 0900-1730. The commissary is closed on Monday except when payday falls on Monday. The commissary is closed for inventory on the 24th of each month except when the 24th falls on a holiday or Sunday in which case the commissary is closed the following day.

## Downtown Servicemen's Clubs

ROSWELL SPONSORS TWO CLUBS for Walker airmen to spend their off-duty time. One is at 121 West Third St., the other is at 211 East Hendricks St. A varied program is offered by the centers, both of which are closed on Mondays.



Classroom instruction on jet-engine operation.



In foreground is shown Dining Hall No. 1. One of the airmen's dormitories appears in background.

### Credit Union

THE ENCHANTED FEDERAL CREDIT UNION offers facilities for regular savings through the purchase of shares either over the counter or by Class "E" allotment and can earn annual dividends up to 6 per cent. Each savings account covers the member with up to \$2000 of life insurance to equal his share balance, free of charge. All military and civilian personnel, and their immediate families, stationed or employed at Walker are eligible for membership. Another feature of the Credit Union is the granting of loans. Signature, co-maker and pledge of share loans are available as well as financing or refinancing of automobiles not more than five years old. The lowest available interest rates are charged and each loan is insured so that it never outlives the borrower. Since organization in 1954, the Credit Union has grown to assets now totaling over one million dollars. The office is located in building S-647 on 3rd Street, across from the airmen's pool. Hours of operation are 0800 to 1300 Monday through Friday, and from 0900 to 1200 on payday Saturdays. For additional information and guidance in managing financial affairs, call extension 2886 or 2887.

### Daily Bulletin

THE DAILY BULLETIN printed by the office of the Base Director of Administrative Services is distributed to all base activities. It is delivered to government quarters on Fridays and included with commissary purchases on other days. The bulletin contains information of both official and unofficial nature. Articles to be published should be submitted to the BDAS in writing at least one week in advance.

### Dining Halls

FOUR DINING HALLS are now in operation at Walker. Dining Hall No. 1 is located in building 555, and Dining Hall No. 3 in building 700. Personnel on 24-hour duty and transient personnel can obtain food in dining Hall No. 3. Dining Hall No. 4 is located at the fire station for crash crews. Menus are published weekly in the base newspaper.

### Education Office

THE BASE EDUCATION OFFICE provides all types of elementary, high school, and college services for base personnel. These services include the following:

Testing — Elementary achievement tests, high school and college GED tests, end-of-course and subject exams, and the Kuder preference record for determining major interest areas.

Correspondence courses — USAFI and cooperating college courses, ECI courses for technical and military development, and Army extension courses for specialized areas.

On-base group study classes — for elementary and high school credit as well as technical training.

College Classes — at the Roswell Community College.

For additional information, visit the Education Services Office in building S-735 or call extension 2244.

### Family Services

THE WALKER FAMILY SERVICES program has a motto — "Helping Hands." Helping hands go to work immediately when families arrive on base. The program is designed to relieve emergencies and hardships of Air Force families when arriving or during the absence of the military member of the family. Volunteer workers are wives of military personnel. The Family Services Center is located in building 908, next to the base nursery. Hours of operation are 0730 to 1630, Monday through Friday. Telephone extensions are 402 and 2217. Families may check with the family services for:

Emergency household items which may be borrowed until household goods arrive.

Listings of off-base rental housing.

Information on AF bases within the continental United States.

Emergency baby sitting, emergency transportation and other assistance to families in time of need.

THE BASE NURSERY offers excellent care and healthy, wholesome meals for infants and children from six months to 12 years of age. The service is open to the children of all assigned and attached military families, and features special rates for working mothers who demand properly supervised and econ-





Walker's ultramodern 50-bed hospital was dedicated on May 14, 1960, by Senator Dennis Chavez of New Mexico. The first patient was Walker's chaplain, Maj. Johann K. Jung.

## Hospital

The newly completed USAF Hospital is located one block inside the main gate, east of the Esplanade. It is complete with the best in modern equipment and staffed with highly trained personnel. Medical care is available to both military and dependents. Military personnel needing medical attention should report to sick call between 0700 and 0800 on any duty day. Appointments for dependents may be obtained by calling extension 361. Personnel on flying status should attend sick call in the Flight Surgeon's Office from 0730 to 0900 on duty days. Hospital services are available at any time night or day in the event of an emergency. Medical treatment after normal duty hours is for emergency only. When services are not available at the base hospital, patients are evacuated to large Department of Defense Hospital Centers, or referred to physicians in the Roswell area under the provisions of Medicare. Information on Medicare is obtained by calling the hospital registrar at extension 355.

## The Veterinary Office

THE VETERINARY OFFICE is located in Building 551 on "F" Street (between the chapel and the commissary). Vaccination and minor treatments for pets are available on Tuesdays and Thursdays from 1300 to 1400 hours, by appointment only. Telephone Extension 2735.

## Dental Clinic

DENTAL CLINIC—The Walker Dental Service offers one of the most modern and best equipped treatment facilities in the Air Force and provides for all phases of routine and specialized treatment.

Routine dental appointments for fillings are made

through squadron orderly room for all personnel. Oral Surgery (tooth extraction), Prosthetic (replacement of missing teeth), Prophylaxis (cleaning) are scheduled at the Main Clinic facility, Building 666, or by calling Extension 456. Sick Call is from 0730 to 0830 and 1530 to 1600 daily at the Main Clinic, Building 666. Emergency cases after normal duty hours are treated by calling the Hospital Charge of Quarters and then reporting to the Hospital Dental Clinic. Dependent Dental Care is provided only on a first-aid basis according to Air Force Regulation 160-41. The main clinic is located on 2nd Street between E and F Streets, one block east of the Fire Station. The hospital clinic is located on the first floor in the northeast corner.



View of new hospital dining room shows modern design and attractive decor.

## Information Office

The Information Office (IXO) is located in Bldg. 610. The telephones are 690 and 691. The IXO publishes the base newspaper, *Strategian*, each Friday. Deadlines for copy for Friday's paper is Tuesday noon each week for Friday's paper. Personnel with news items are encouraged to bring them in or phone them in to the IXO. The IXO furnishes news and feature stories to the Roswell Daily Record, the El Paso Times, Air Force Times and the radio stations and the TV station in Roswell. In addition, the IXO supplies information for hometown release stories to the Hometown News Center, Tinker AFB, Oklahoma. The IXO sponsors the Roswell Walker Press Club which meets the first Friday of each month to further better public relations between the base and the news media of the Roswell area.

## Laundry

Government Laundry is located in Bldg. 229 and furnishes excellent service at below-average prices. "Special" service is available on a "one-day" basis and garments will be returned on hangers at an additional cost of 1c per garment. There is also a centrally located "pick-up station" at Bldg. 829 next to the Base Post Office.

## Post Office

THE POST OFFICE is located in Bldg. 828, Ext. 469. Your address, if receiving mail on base is as follows:

Rank and Name  
Organization  
Walker Air Force Base,  
New Mexico

The post office is open 8 hours a day for mailing purposes, with convenient mail boxes located around the base. Stamps and money orders may be purchased from 0800 to 1600 Mon. thru Fri.

## Recreation

WALKER OFFERS a well-rounded and diversified recreational program for all members of the family. The program is well planned for the youngsters as well as adults, and includes family recreation. Facilities are for your enjoyment and are waiting for you and yours to use them.

**RECREATIONAL SUPPLY:** Items such as softball equipment, horseshoes, badminton sets, volleyball sets, tennis rackets, basketballs and footballs may be issued to individuals on a temporary basis. Golf clubs, hunting, fishing and camping equipment are available for a small rental fee. Recreational Supply is in Bldg. 688, telephone 729.

**BOWLING** — The Strato Lanes offer a snack bar, beer counter, and eight lanes of automatic bowling. The snack bar and cigarette counter are open on duty days from 0830 to 2300 hours, from 0800 to 2400 Saturdays and from 1100 to 2300 on Sunday. Beer is sold to those off duty from 1100 to 2300 on duty days; from 1000 to 2400 on Saturday, and on Sunday from 1300 to 2300. Bowling is available from 1000 to 2300, Monday through Friday, 0830 to 2300 on Saturday, and on Sunday from 1300 to 2300. Bowling costs 30c a line, with 10c for shoe rental. Bowling equipment can be bought at reasonable rates. Those interested in joining a league or in

other bowling activities are invited to contact the bowling alley manager at extension 638.

**GOLF**—A nine-hole golf course is located 3 miles beyond the Eastern Flight Line Gate. A beautiful new clubhouse with a snack bar and a complete line of golfing equipment is available for your use. Green fees 50c, cart rentals 25c, and club rentals 35c. A golf pro is available for group lessons. Hours of operation are: 0800-1700 Sunday through Friday, 0700-1900 on Saturday.

**GYMNASIUM** — Seasonal sports and other activities are offered by the base gym. Facilities include handball, weight lifting, badminton, volleyball, basketball and gymnastic equipment. Hours of operation are posted in the gym and change periodically. The NCOIC of the gym is responsible for base athletic programs. Interested personnel may contact him at extension 2637.

**RIDING STABLES** — Located at the western tip of the base, four miles from the Western Flight Line are the base riding stables. Arrangements can be made for rental of riding horses, boarding of horses, chuck wagon suppers, hay rides, trail rides and instruction for novices. Rental of horses is \$1 by the hour, but monthly plans are available for military personnel, dependents and large families. Hours of operation change with the season but are posted at the stables. Facilities are available for squadron and section parties. For additional information or planning assistance call extension 2484.

**SWIMMING POOLS** — Three swimming pools are available for the enjoyment of base personnel. Two, the officers' and NCO pools, are at the open mess locations. The airmen's pool is adjacent to the new service club. All three are open from mid-April to the end of September. Strict adherence to rules is enforced. No one is allowed in pools when lifeguards are absent. Kiddie pools and snack bars are located at or near each of the main pools.

**THEATER** — Screen time is 1800 and usually 2000 hours nightly, with a morning matinee at 1000 hours on Saturday for the kiddies and an afternoon matinee on Saturday and Sunday at 1400. Phone extension is 440.

**ADDITIONAL INFORMATION** on recreational facilities offered at Walker may be obtained by calling extensions 536 or 2715.

## Red Cross

THE RED CROSS field director's office is located in Bldg. 826 and he may be reached at Ext. 625 or 2575. After duty hours, the Red Cross director may be reached by calling the base operator and asking for the name and telephone number of the staff member on duty. The Red Cross offers you emergency assistance when you need it.

## Western Union

SERVICES ARE PROVIDED for sending and receiving telegrams from 0800 to 2300 daily at Bldg. 811, Ext. 400. Only emergencies will be handled between 2300 and 0800. No money order facilities are available.





## *Roundup at South Spring, 1875*

by Peter Hurd

THE PAINTING reproduced above, which adorns the east wall of the Officers' Club dining room, was a gift to the club from Peter Hurd. It shows a scene on the John Chisum ranch at South Spring, just a couple of miles east of what is now the Headquarters of the 6th Combat Support Group.

According to Mr. Hurd, this picture is based partly on photographs taken in the early 1880's by a German photographer who used 50 pounds of wet plate equipment and a thirty-foot scaffold carried about in a wagon. In the artist's words, "By using these as a sort of springboard, I have launched into a mixture of fact and fancy to create for you 'Roundup at South Spring, 1875.' But much of it is personal recollection, for I

have a vivid childhood memory of the river source with its great springs surging from the earth; of the beautiful cottonwood bosques which, on summer evenings, became alive with fireflies.

"Today, less than a hundred years later," Mr. Hurd continues, "what a change! Gone is the lovely river—a victim of irrigation pumps and perhaps a changing climate. The trees at the scene of my painting are fallen hulks turning to dust. The Chisum story is already entangled with legend and forgotten by all but a few. In my own time, the myth of Icarus has been refuted forever and the eagle and the hawks no longer dominate the sky. In the entire vista, only the cobalt blue face of Capitan Mountain remains unaltered."

PETER HURD, famous American artist of the Southwest, was born in Roswell and lives on the Sentinel Ranch near San Patricio, N. M., in the Ruidoso Valley. He plays polo, speaks fluent Spanish, and sings in Spanish to his own accompaniment on the guitar. He was educated at the New Mexico Military Institute, the U. S. Military Academy, Haverford College, and the Pennsylvania Academy of Fine Arts. He also studied painting under N. C. Wyeth. His work is represented in collections throughout the United States. A large collection of his paintings may be seen at the Roswell Museum and Art Center.

Few civilians are more loyal supporters of the Air Force than Mr. Hurd. He serves on the Walker Air Force Base Civilian Advisory Council and always finds time for Air Force projects when his help is needed. In 1942 he spent 5 months with the U. S. Army Air Forces in England; and in 1944 he spent 5 months with the Air Transport Command in South America, Africa, India, Arabia, and Italy as a war correspondent for "Life" magazine.

Known particularly for his landscapes of New Mexico and for his portraits of its people. Mr. Hurd often combines the two subjects in one painting. Many of his rancher neighbors are the proud owners of paintings he has done of them and their surroundings. His work is distinctive for its luminosity, clarity, and spaciousness.



Peter Hurd unveiling painting at dedication ceremonies.

# KEY

1. PASS & REGISTRATION  
BASE POLICE
2. HOSPITAL
3. COMMISSARY
4. N.C.O. CONSOLIDATED  
MESS
5. DINING HALL
6. SERVICE CLUB
7. AMN POOL
8. CREDIT UNION
9. DENTAL CLINIC
10. HOBBY SHOP
11. PHOTO LAB
12. PERSONNEL PROCESSING
13. BASE HEADQUARTERS
14. BASE OPERATIONS
15. CAFETERIA
16. GYMNASIUM
17. DINING HALL
18. THEATER
19. REFRESHMENT MART
20. 4129<sup>th</sup> C.C.T.S.
21. CHAPEL
22. BOMBING HEADQUARTERS
23. WESTERN UNION
24. BOWLING ALLEY
25. CLEANERS
26. POST OFFICE & LAUNDRY
27. CLOTHING SALES
28. RED CROSS

29. BASE EXCHANGE
30. BANK
31. OFFICER'S CLUB & POOL
32. ELEMENTARY SCHOOL
33. BASE HOUSING OFFICE
34. B.O.Q.
35. NCO CLUB & POOL
36. YOUTH CENTER
37. SERVICE STATION

Walker AFB



omical child care.

For families seeking occasional entertainment minus the children, rates per hour for officers and NCO's start at 40 cents for one child and are 45 cents for two and 50 cents for three or more. For airmen the rates start at 25 cents for one child, 30 cents for two children, and 35 cents for three or more. Food for children left over meal hours is 25 cents per meal. A package rate for those "vacationing" for a day include one meal and nine hours of care for \$2.50 for one child and \$3.50 for two.

The monthly working mother fee is \$34 for one child, \$17 for a second child and \$12 for each additional child. The rate includes one meal per day.

Still another package has been designed for weekend care. Four or more families desiring to leave children overnight may do so at \$4.00 for one child for each family and \$1.50 for each additional child per family. Meals on this plan are available at the regular price and the fee charged is for 24 hours.

Special rates are always available for clubs and organization meetings, and free nursery is provided during all chapel services through the courtesy of the base chaplains.

The nursery is located in building 910 just east of and opposite the new BOQ. Operating hours are:

7:00 a.m. until 11 p.m. Monday through Thursday  
7:00 a.m. until 1 a.m. Friday  
7:30 a.m. until 2 a.m. Saturday  
8:00 a.m. until 11:00 p.m. Sunday

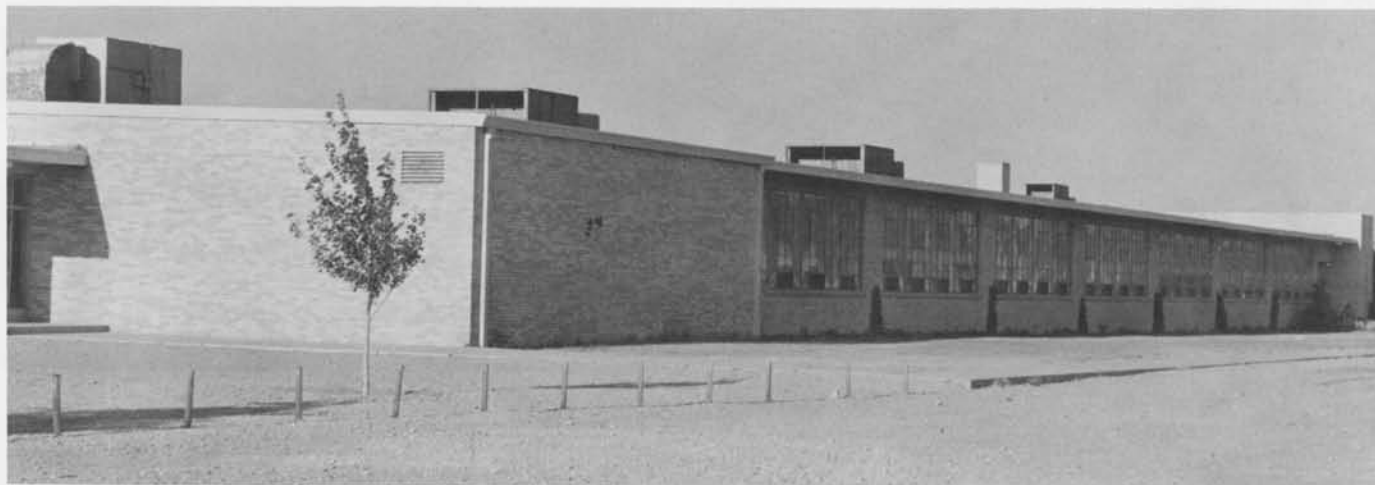
**PICNIC AREA** — A large and well equipped picnic area is located west of the officer housing area and is open at all times to base personnel. Stoves, water, and play equipment are on hand. Information may be obtained by calling extension 2715.

**SCHOOLS** — An elementary school is located on base for military dependents. Two junior high school and a high school are available in Roswell, with bus service provided between these and the base. There is a Parochial school located in Roswell. Roswell is also the home of the New Mexico Military Institute, a nationally known military school with courses extending through junior college.

### Hobby Shops

**THE AUTOMOTIVE HOBBY SHOP**, located in Bldg. 642, is open to all base personnel and offers facilities and equipment for almost any repair job on foreign cars, American cars, and scooters. Equipment available includes motor test equipment, a large wash rack, grease racks, tools, and metric tools for foreign cars. A small service charge is made for use of this equipment. Hours of operation are: 1300-2030 Wednesday-Friday, 0800-1600 Saturday and Sunday. Closed Monday and Tuesday.

**THE WOODWORKING HOBBY SHOP** in Bldg. 642 offers many hours of pleasure to those who like to build, repair, refinish or remodel old or new furniture and other wood items. Personnel are on hand to assist on all woodworking projects. There is a small service charge for small hand tools, power tools and saws. Hours of operation are the same as for the auto hobby shop.



The Walker Elementary School is completely modern in design and procedures. Grades one through eight are taught.



Monjeau Retreat, built and operated by Walker personnel, offers 24 cabins for use by personnel, dependents, and guests. Equipped with double beds, couches, bathroom facilities, complete kitchen facilities including utensils and dishes, lighting and central heating. All are available for \$3 per cabin per night. Free linen service is also available.

Located in the White Mountain Range near Ruidoso, the site can be reached by driving west on highway 380 to Capitan, turning left on state highway 48 and following the signs to the retreat.

Reservations can be made by calling Recreation Services, ext. 2715, or after Thursday by calling the retreat in Ruidoso at CL 7-5657.

Swimming, skiing, fishing, boating, hunting, and other forms of recreation are provided at this beautiful mountain resort area.



Officer 4-bedroom quarters.



Noncommissioned officer quarters.



One of eight modern dormitories for airmen.



Interior of airmen's dormitory.



The base library.

## Housing

ON-BASE HOUSING is available for families, bachelor officers and airmen. Bachelor officers are housed in building 821 for permanent party members at a rate of \$10 a month or \$.34 a day. There are 801 houses on base for married personnel. Of these there are 351 available for officer families and 450 for airmen families. A current listing of off-base rentals is maintained at the Family Services Center (Ext. 402) to assist newly arrived families.

Housing for rent in the immediate area of the base is scarce. Two or three-bedroom houses rent for from \$100 to \$125 on the average. The Base housing office is in building 905, apartment "A". The phone extension is 565. Families expecting to be assigned to Walker AFB must apply 30 days prior to their reporting date by sending a copy of orders, dependents' ages and sex, rank, and date of rank.

## Legal Assistance

THE BASE LEGAL OFFICE will answer questions on legal matters between the hours of 1300 and 1600 on Monday, Wednesday and Friday. Military personnel and their dependents are entitled to counseling on wills, marriages, and claims. Telephone extension 2204 for further information.

## Base Library

THE BASE LIBRARY, building #664, welcomes airmen, officers and civilians attached to the base and their families to use its books, LP records, and reference section.

The Library is located three blocks east of the theater on Third Street. Hours of operation are 1100 to 2000 on Monday through Friday. Saturday 1300-1700. Sunday and official holidays the hours are 1200 to 1700. During alerts the library is closed.

Books may be returned at any time without leaving your car by the use of the drive-up book return at the side of the library.

For your recreation reading, Walker Library has best sellers, mysteries, westerns, and science fiction.

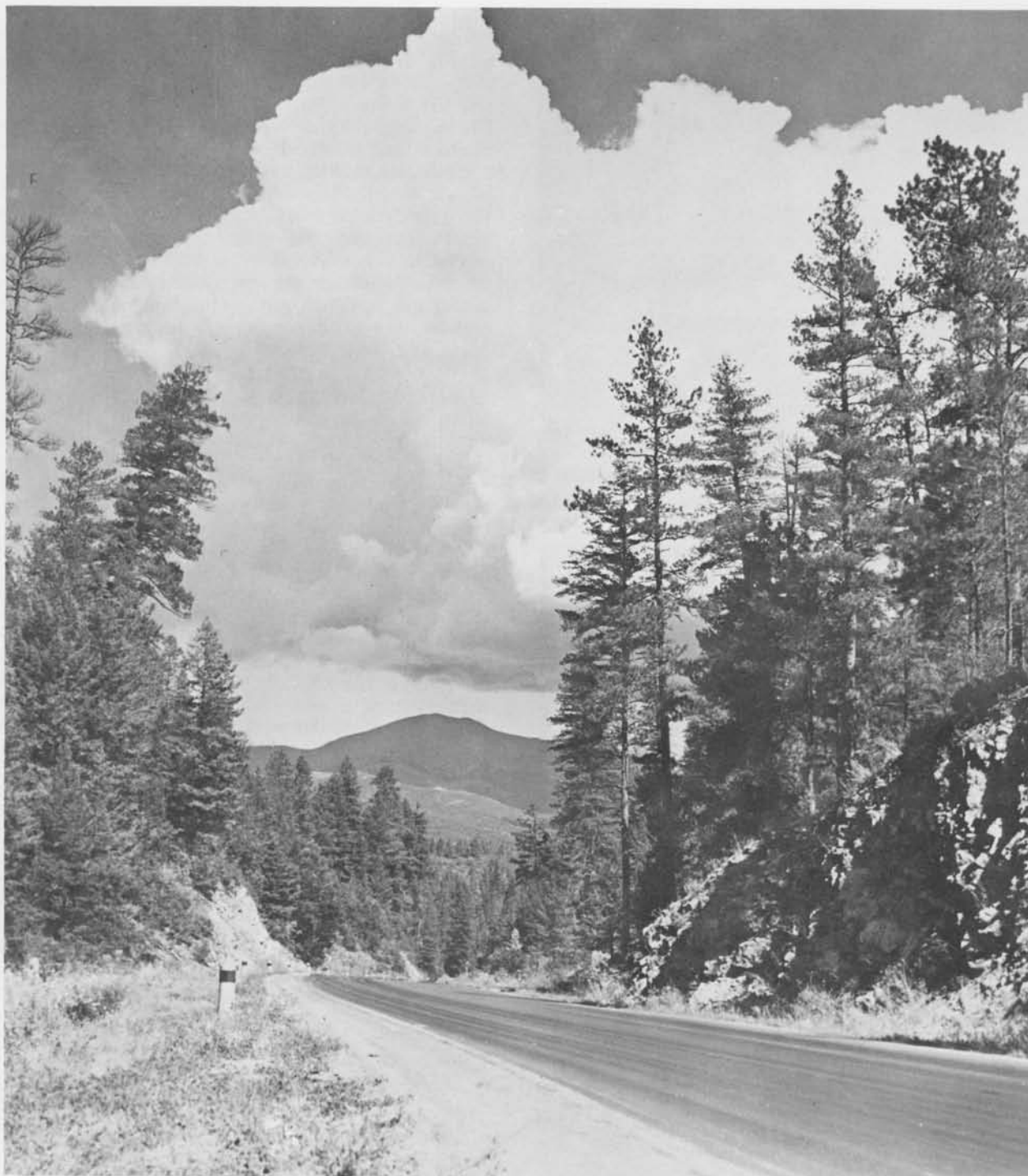
To help you in your Air Force career, your off-duty education and your personal hobbies and interests, the library offers a wide range of non-fiction and technical books. About \$6,000 worth of books and magazines are procured each year, including those used by various sections of the base in their work.

Plans to completely remodel and refurbish the building in 1961 will make the library a more attractive place for spending leisure time and for study. Sections for children's books and a young adult collection will provide service for all members of Air Force families.

The library staff will help you find what you need, and will answer your telephone reference questions. Call extension 2012.

USE YOUR LIBRARY! ENJOY IT! LEARN!





## *The Land of Enchantment*

### *New Mexico . . .*

New Mexico is a land of contrast. Here, side by side, are the ancient and the modern: blanketed Indians, with the wisdom of the ages in their faces, rub elbows with crew-cut scientists; adobe missions blend with the New Mexico earth, modeled on the same mesas which now bristle with security-guarded laboratories; sunbitten cow hands drive their cattle past radar sites and range beacons. Here in the

dust of centuries are the markings and tracings of prehistoric man. And here, quiet now, is an area where the sand has fused — Trinity Site, where on July 16, 1945, in a blinding flash, the Atomic Age came bursting on our world. It is a land of surprises . . . a place of deep shadows and brilliant sunshine . . . of towering mountain peaks and flat plains . . . of prehistoric ruins and atom smashers.



Skiing at Ruidoso

Photo courtesy of Roswell Chamber of Commerce



Fine highways make areas like this "right next door."

Photo courtesy of Roswell Chamber of Commerce



Three distinct cultures mingle their language and traditions to produce a heritage that is altogether unique in America. The fifth largest of the 50 states, New Mexico has a tremendous physical variety. It contains six of the seven life zones of the North American continent, offering a full range of climate and surroundings.

Here are fertile, irrigated plains and valleys and here are high, forested mountains. And here also is the cattle country with its rolling hills, canyons, high buttes, and wide mesas.

The scenic variety of the state is matched by its wide possibilities for recreation. For the traveler there are facilities for swimming, camping, fishing and hunting in season, skiing, hiking, horseback riding, dude ranching and golfing.

The big game hunting season is in mid-November — for deer, bear, and turkey. The season on upland birds begins in early September and ends in early December — on a staggered basis for the different classes of birds.

The mountain areas of northern and central New Mexico, and the Mogollon range in the southwestern part of the state, offer trout fishing. Warm water game fishing — bass, crappie, bream and bluegill — is found in lakes and streams below 6,000 feet. The trout season generally opens in May and closes late in November, except for some special waters open all year. For boating and fishing there are a number of lakes and reservoirs in New Mexico. Some of these are: Clayton Lake, near Clayton, Conchas Reservoir, Eagle Nest, Bluewater, Elephant Butte Reservoir and Lakes McMillan and Avalon, both near Carlsbad.

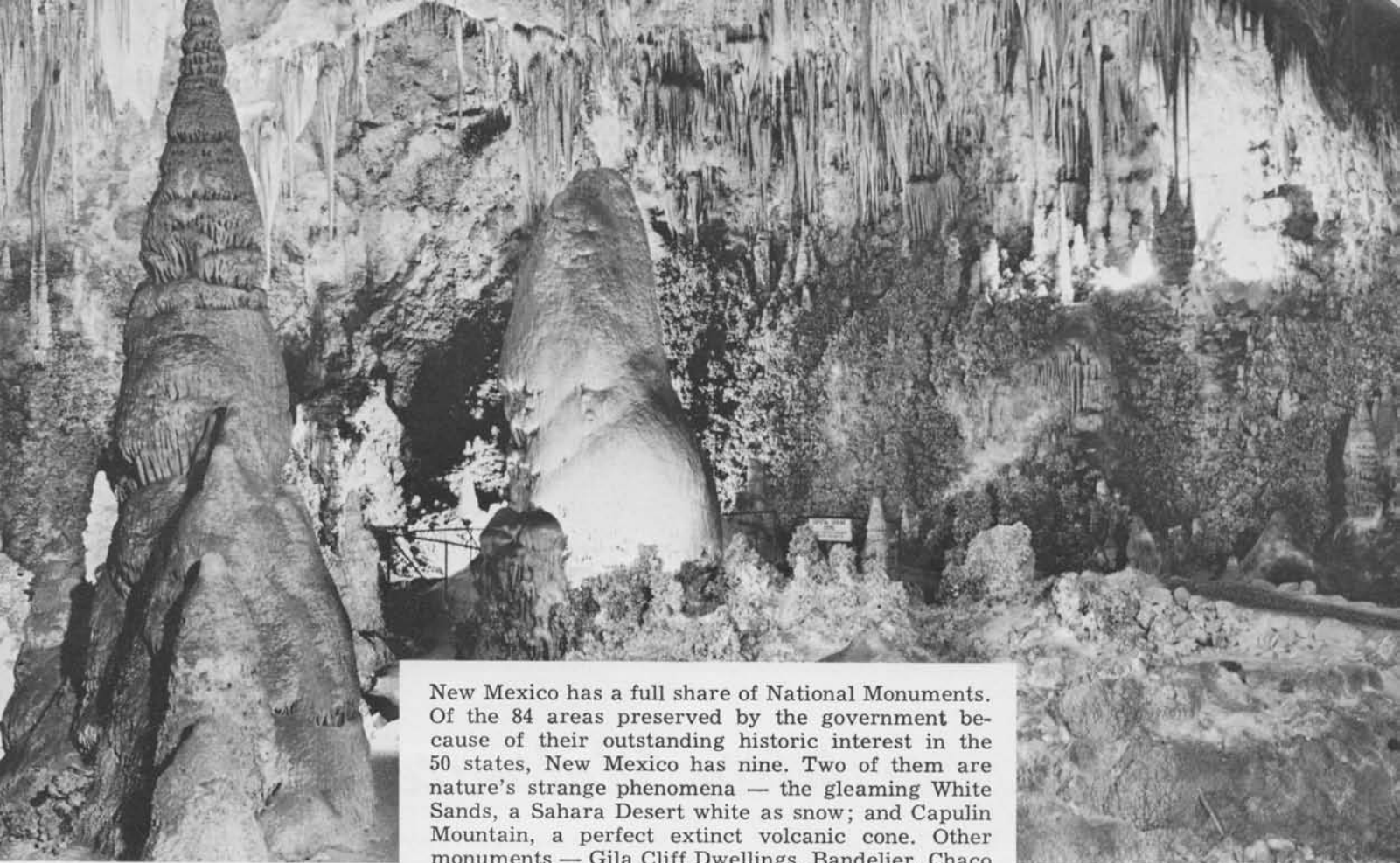
Skiers will find these areas: Sipapu, between Taos and Las Vegas, with trails and ski lift and instructions available; Santa Fe Basin, just north of Santa Fe, "Poma" chair lift and 3 rope tows, 12 miles of cleared trails, and practice slope, as well as a skating rink; La Madera, 25 miles north of Albuquerque with T-bar tow, 300 ft. rope tow, practice slope, and instructions; Ruidoso-Cedar Creek, 4 miles from Ruidoso, has rope tow, intermediate ski run, regular trail, and toboggan run; Cloudcroft, one mile from Cloudcroft, with a rope tow, a novice intermediate run, beginners' meadow, slopes for tobogganing and sledding; Taos Valley, 2 "Poma-lifts" and a T-Bar Ski-Kuli. Accommodations available at Hondo Lodge.

There are regular seasons of horse racing at Ruidoso Downs near Ruidoso, and at La Mesa Park near Raton.

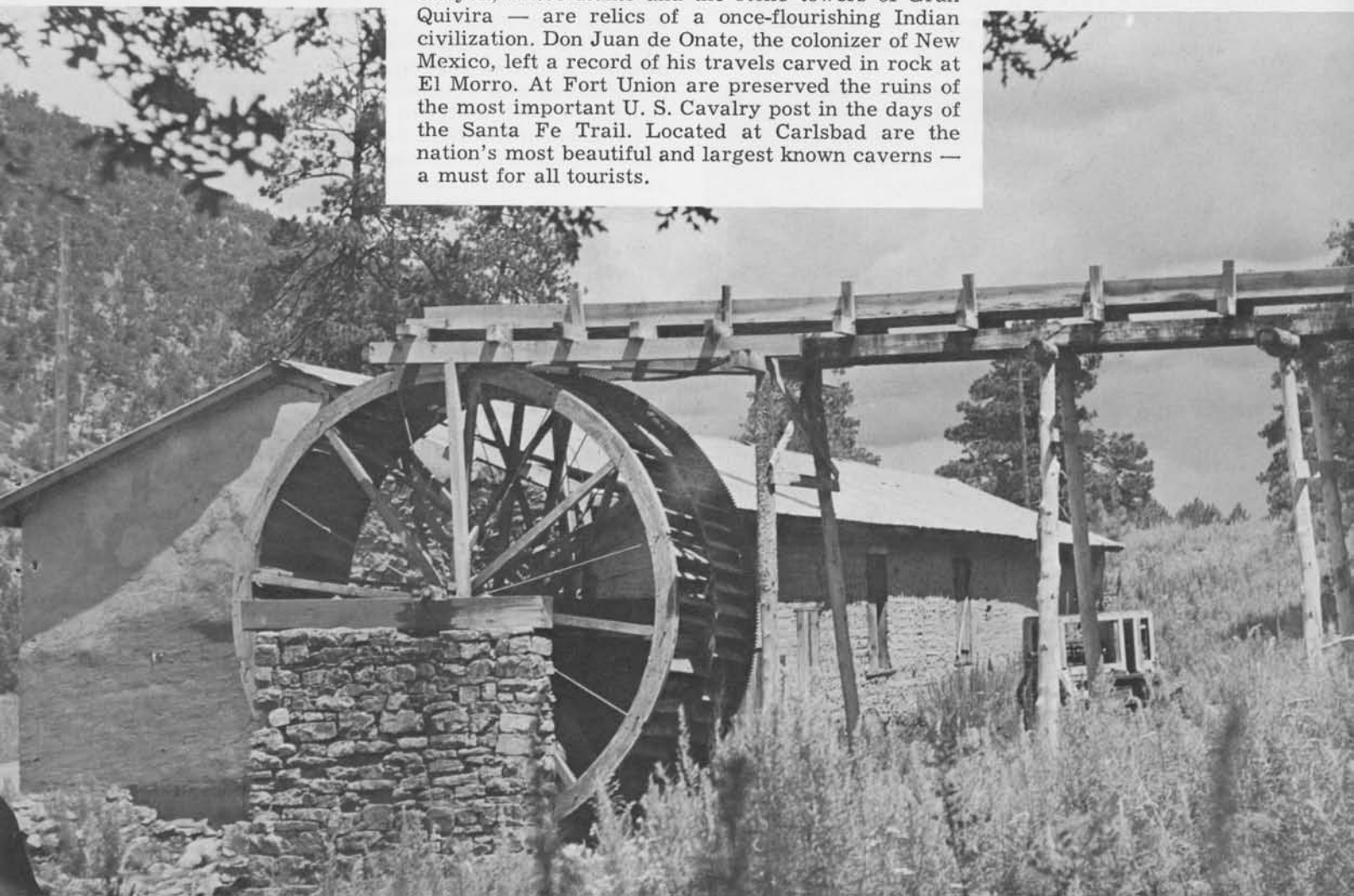
Irrigation—backbone of New Mexico's farm economy.

Photo courtesy of Roswell Chamber of Commerce





New Mexico has a full share of National Monuments. Of the 84 areas preserved by the government because of their outstanding historic interest in the 50 states, New Mexico has nine. Two of them are nature's strange phenomena — the gleaming White Sands, a Sahara Desert white as snow; and Capulin Mountain, a perfect extinct volcanic cone. Other monuments — Gila Cliff Dwellings, Bandelier, Chaco Canyon, Aztec Ruins and the stone towers of Gran Quivira — are relics of a once-flourishing Indian civilization. Don Juan de Onate, the colonizer of New Mexico, left a record of his travels carved in rock at El Morro. At Fort Union are preserved the ruins of the most important U. S. Cavalry post in the days of the Santa Fe Trail. Located at Carlsbad are the nation's most beautiful and largest known caverns — a must for all tourists.







Modern, well-equipped schools build better Roswell citizens for tomorrow.

Photo courtesy of Roswell Chamber of Commerce

## *Roswell... Livability Unlimited*

Thousands of tourists visit Roswell annually on U. S. highways 70, 285 and 380, a large percentage of them to stay a week or a season, others merely to spend a night on their way to some other destination over this logical route. They find good hotels and motels eager to serve and add to the pleasure of the visit — whether for a few hours or a few weeks.

Both Roswellites and visitors like this lovely city for its well nigh perfect climate and ideal elevation — 3600 feet above sea level. Though not a health resort, thousands have found it an ideal place in which to regain health. Many who come to regain

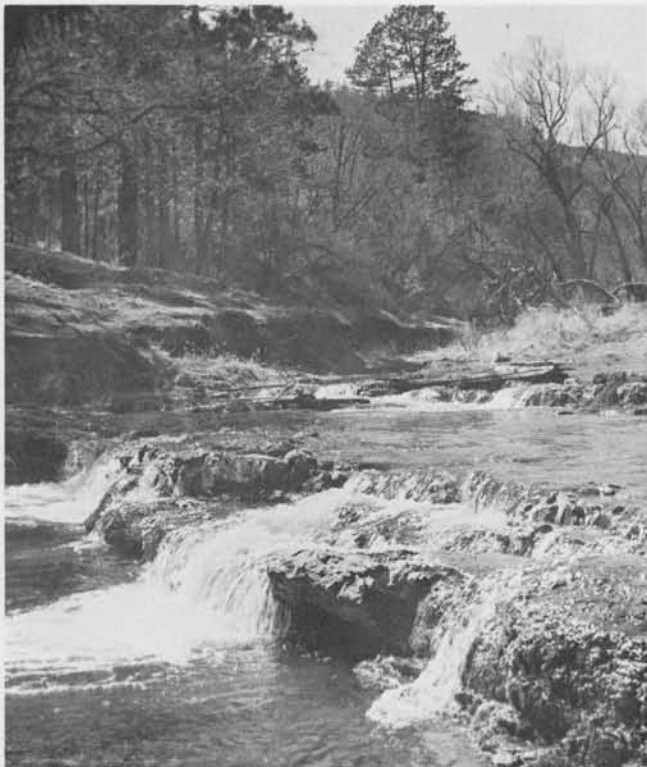
health have stayed to enjoy Roswell's climate for the rest of their lives. Those looking for an ideal community in which to invest, to enter business, to live, work and play will find much to recommend Roswell. Three fine golf courses, miniature golf, numerous swimming places, boating, hunting of all kinds, college football and athletics at New Mexico Military Institute.

The heart of Roswell's business and civic life is an active, efficient Chamber of Commerce which invites your further inquiry.

Famous Ruidoso Downs Racetrack.

Photo courtesy of Roswell Chamber of Commerce





Cool waters run fast near Roswell, offering excellent trout fishing.

Photo courtesy of Roswell Chamber of Commerce

## *Roswell (continued)*

Enjoying the sunshine of the great Southwest with people you like — in comfortable surroundings — thousands of shade trees—golf (winter and summer) — tennis — football — baseball — auto racing — bowling — shuffle board — swimming. That's what visitors to Roswell, New Mexico, find.

Nature has bestowed on the area America's most healthful and enjoyable climate. With as great a percentage of sunshine in winter as summer, outdoor life is pleasant practically every day in the year.

In winter the days as a rule are bright, warm and pleasant — inviting — urging you to get out and enjoy life in the open. The nights are crispy cold, the mercury usually going below freezing. From nine to four on an average winter day you do not need a top coat. Wonderful weather for golf, shuffle board and other outdoor sports.

In summer there's swimming and for those who want the invigorating scent of pines on a July evening, the mountains are only two hours away over fine highways. Horse back riding, over trails never to be forgotten with entrancing vistas unfolding as you top each rise in the trail; motoring to points of equal charm farther away.

In winter these same mountains offer winter sports — skiing and tobogganing. Yes, there's variety for you in Roswell, New Mexico.

Roswell counts among its assets New Mexico Military Institute with more than 600 cadets from all parts of the United States and several other countries — one of the finest military schools in the nation.



Golfing is a year 'round sport in Roswell.

Photo courtesy of Roswell Chamber of Commerce

Roswell residents take pride in their fine shade trees.

Photo courtesy of Roswell Chamber of Commerce





Photo courtesy of Roswell Chamber of Commerce

## *Roswell (continued)*

# *Places to Go*

### **BOTTOMLESS LAKES STATE PARK**

East on US 380 — 10 miles and turn right 2 miles — swimming, boating — picnicking and horseback riding.

### **NEW MEXICO MILITARY INSTITUTE**

North Main at College

### **CAHOON PARK**

West 5th Street — Tennis — Swimming — Golf — Picnicking

### **ROSWELL MUSEUM**

104 West 11th Street — Hurd Collection, Works of old and modern masters, Goddard Rocket Exhibit, Historical Data.

### **SWIMMING**

Cahoon Park — La Hondo Park — Bottomless Lakes State Park

### **CARLSBAD CAVERNS**

South on US 285 — 106 Miles

### **SIDE TRIPS**

Lincoln National Forest, West on US 70 — Mountain Resorts — Ruidoso — Cloudcroft — Horseback Riding — Fishing — Picnicking — Skiing — Billy the Kid Land.

### **GOLFING**

Municipal Golf Course, Cahoon Park; Country Club, NE Roswell 4 Miles — New Mexico Military Institute

### **MEMORIAL YOUTH CENTER**

A Teen-age Haven — 800 Block North Missouri Ave.

### **MINIATURE GOLF COURSE**

Terrace Hills, S. E. Main Street

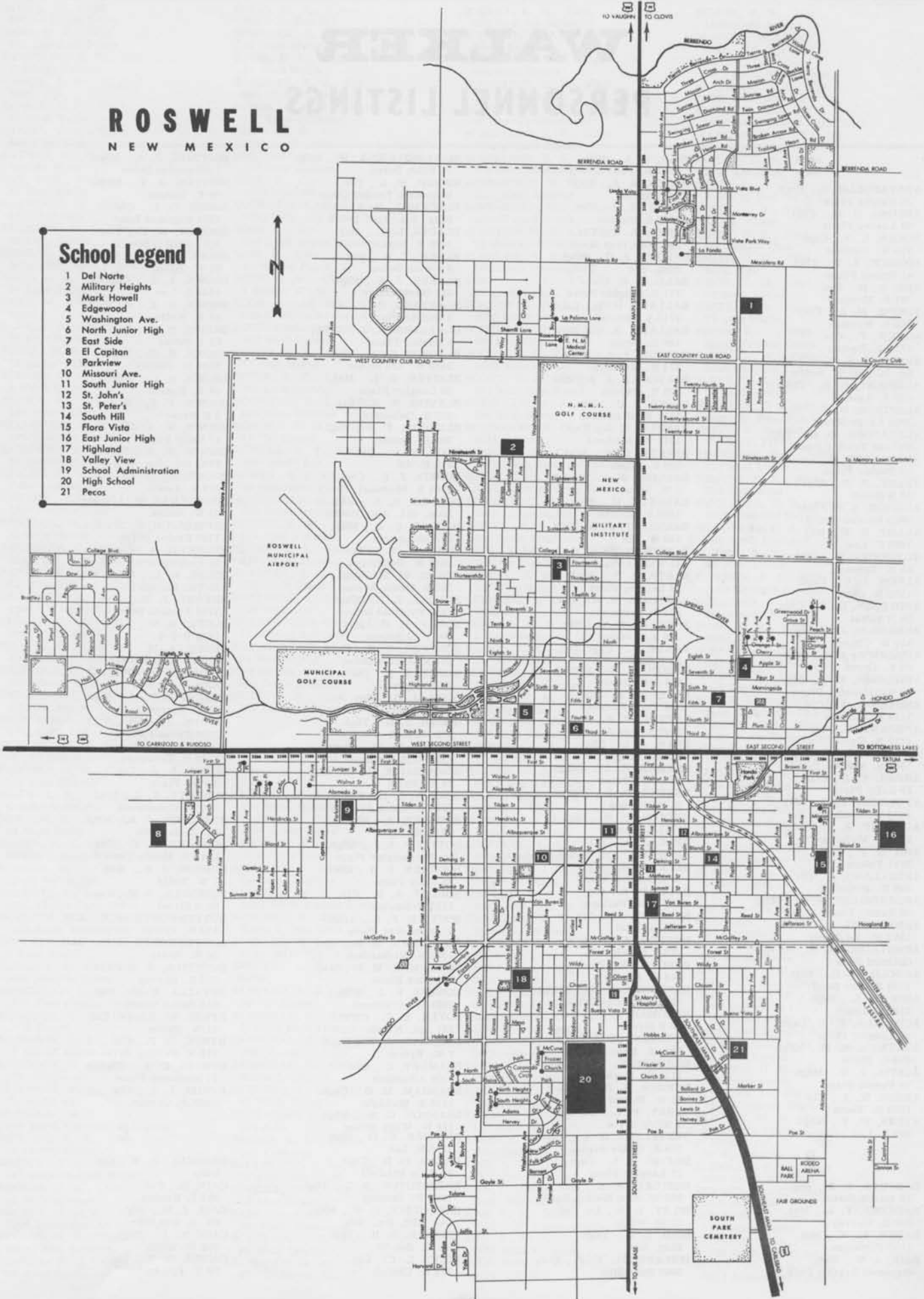


# ROSWELL

NEW MEXICO

## School Legend

- 1 Del Norte
- 2 Military Heights
- 3 Mark Howell
- 4 Edgewood
- 5 Washington Ave.
- 6 North Junior High
- 7 East Side
- 8 El Capitan
- 9 Parkview
- 10 Missouri Ave.
- 11 South Junior High
- 12 St. John's
- 13 St. Peter's
- 14 South Hill
- 15 Flora Vista
- 16 East Junior High
- 17 Highland
- 18 Valley View
- 19 School Administration
- 20 High School
- 21 Pecos



# WALKER

## PERSONNEL LISTINGS

### A

ABATANGELO, N., Capt.  
16 Vaughn Place  
ABROMS, G. M., Capt.  
63 Luebke Place  
ACKER, L. F., Capt.  
916 W. Forrest  
ADDISON, J. T., TSgt.  
41 Brown Place  
ADE, A. D., Civ.  
704 S. Montana  
ADKINS, M. A., Civ.  
704 S. Montana  
AGNEW, F., Civ.  
1702 S. Stanton  
AHMIE, K. S., Civ.  
Rt. 1, 1207 W. Hobbs  
ALBRIGHT, G. H., Capt.  
340 E. Lewis  
ALDRIDGE, W. T., TSgt.  
2903 Largo Street  
ALEXANDER, O. D., TSgt.  
DeLuxe Trailer Court  
ALEXANDER, R. T., MSgt.  
19 Dunbar Place  
ALLEY, P. D., SSgt.  
13 H Street  
ALLISON, S. A., Maj.  
3000 Encanto Drive  
ALLOY, R. N., Maj.  
1908 S. Lea  
ALMODOVA, H., MSgt.  
68 E. Eyman  
ALTON, L. C., Capt.  
1502 N. Ohio  
ANDERSON, D. F., Capt.  
25 B Street  
ANDERSON, J. A., Civ.  
104 E. Church  
ANDERSON, J. G., SSgt.  
93 E. Byrne  
ANDERSON, N. I., TSgt.  
54 Werkheister Place  
ANDERSON, S., Civ.  
1114 E. Bland  
ANDREWS, E., Civ.  
1618 N. Union  
ANDREWS, H. E., SSgt.  
1400 S. Monroe  
ANESSI, T. J., 1/Lt.  
59 Kelly Place  
APOLINSKI, C. S., Maj.  
1422 W. Alameda  
APPLEBY, R. V., MSgt.  
903 W. Mathews  
ARD, G. F., Civ.  
3011 Futura  
ARRELLANO, J., Civ.  
806 E. McGaffey  
ARGENBRIGHT, E. L., MSgt.  
76 Ramey Place  
ARMSTRONG, A. C., Civ.  
1502 W. 1st Street  
ARMSTRONG, A. H., A/1C  
Orchard Park  
ARNOLD, W. R., TSgt.  
1100 Rancho Road  
ASHE, R. L., SSgt.  
219C G Street  
ASTRELLA, R. J., Capt.  
17 Langley Place  
AULTMAN, H. M., MSgt.  
604 S. Birch  
AUSTIN, J. W., MSgt.  
73 Powell Place  
AXSON, W. A., Civ.  
1200 E. Bland  
AYERS, W. T., MSgt.  
909 S. Lea

### B

BABAUTA, F. S., SSgt.  
10 Martin Street  
BACKERT, F. L., Maj.  
300 E. Hervey  
BADER, M. W., Maj.  
1102 Princeton  
BAIN, J. W., SSgt.  
Stapleton Trailer Park

BAIR, H. A., SSgt.  
1201 N. Penn Street  
BAKER, R. F., Maj.  
6 W. Byrne  
BAKER, R. F., Civ.  
1708 S. Stanton  
BAKER, R. C., Civ.  
Apt. 20 Crane Motel  
BALDON, J. D., MSgt.  
Bldg. 534  
BALL, R. C. Civ.  
711 S. Heights Drive  
BALLARD, H. L., Capt.  
1712 S. Monroe  
BALLARD, R. T., SSgt.  
106 E. Bryne  
BALLOU, J. A., SSgt.  
214 E. Mathews  
BALVOCIUS, J. A., Civ.  
323 E. Church  
BANKS, J. C., Civ.  
1911 E. Hendricks  
BANNAN, R. J., Capt.  
1217 W. Mathews  
BARKER, C. V., SSgt.  
506 S. Aspen  
BARLOW, W. V., Maj.  
1 W. Byrne  
BARNETT, M., TSgt.  
1603 S. Stanton  
BARNHART, J. D., Civ.  
810 W. 5th  
BARROWCLOUGH, R. I., Col.  
11 Walker Place  
BARTH, A. E., 2/Lt.  
29 Langley Place  
BARTIMUS, N. R., Civ.  
303 S. Sycamore  
BARTLES, T. O., Civ.  
219 E. Frazier  
BASILE, L., Capt.  
24 B Street  
BASKIN, W. E., MSgt.  
613 Jaffa Street  
BATES, P. J. Capt.  
504 Vista Parkway  
BATTLE, R. E., MSgt.  
2907 S. Lea Avenue  
BEAM, J. L., SSgt.  
326 E. Bonney  
BEAMAN, K. L., SMSgt.  
3 Barlow Place  
BEAVER, C. E., SSgt.  
25 E. Byrnes  
BEETON, C. M., SSgt.  
1111 S. Penn  
BELK, J. A., 1/Lt.  
Bldg. 301, Apt. B-2-1  
BELL, J. M., 2/Lt.  
19 Hunsicker Place  
BELL, T. B., Civ.  
606 Vista Parkway  
BENTLEY, A., Civ.  
Crane Motel  
BENTON, W. H., Civ.  
VOQ, WAFB  
BERG, R. W., Civ.  
344 E. Hervey  
BERGGREN, K. W., SMSgt.  
3504 Bandolina Drive  
BERGMAN, V. N., Maj.  
23 B Street  
BERGREN, W. G., SSgt.  
1014 S. Penn  
BERNEBURG, L. L., Maj.  
1115 W. Gayle  
BERNER, B. P., Capt.  
32 W. Eyman  
BERRY, P. L., Capt.  
2 Wildy Drive  
BERTELSEN, D. L., SSgt.  
608 S. Cedar Avenue  
BERTIC, S. L., Capt.  
27 Langley Place  
BESTGEN, W. E., Maj.  
505 W. New Mexico Road  
BILBY, B. B., Lt. Col.  
22 W. Wells  
BIRD, L. A., TSgt.  
Bldg. 537  
BIRKENBUEL, F. P., Civ.  
3307 Bandolina

BIRKENSTOCK, A. W., MSgt.  
14 Wildy Drive  
BISHOP, W. A., Civ.  
Main Gate Trailer Court  
BLACKMAN, D. A., 1/Lt.  
Bldg. 821, Apt. B-2-5  
BLADES, L. L., Maj.  
2405 S. Baylor  
BLAKE, T. A., Maj.  
6 Forest Drive  
BLAKEY, J. E., TSgt.  
641 Werkheister  
BLAZZARD, H. E., Civ.  
9 Dunbar Place  
BLAZZARD, N. J., SMSgt.  
9 Dunbar Place  
BLEDSON, S. W., Maj.  
1809 W. 3rd Street  
BLEILER, G. L., Maj.  
30 Langley Place  
BLEVINS, W. E., Civ.  
707 S. Delaware  
BLUFORD, F. W., SSgt.  
306 E. Bonney  
BOCK, V. E., Civ.  
615 E. 6th  
BODKIN, J. E., Capt.  
1501 S. Missouri  
BODMER, H. A., 1/Lt.  
Bldg. 821, Apt. B2-1  
BOGARD, C. E., MSgt.  
57 Van Leeven  
BOHN, M. W., TSgt.  
1416 W. Hendricks  
BOHON, W. M., Capt.  
703 S. Cedar Avenue  
BOLDRA, B. K., Capt.  
2805 Emerald Drive  
BOLEY, M. C., Maj.  
704 N. Atkinson  
BONSWOR, R. E., Capt.  
801 S. Adams Drive  
BOONE, S. L., Civ.  
99 E. Byrne  
BOOP, J. D., SSgt.  
Bldg. T877  
BOOTH, J. D., TSgt.  
315 Ballard  
BORDEN, W. O., Civ.  
1301 Highland Road  
BORRADAILE, A. L., SSgt.  
68 E. Wells  
BOSECK, J. B., SMSgt.  
2319 N. Mesa Avenue  
BOSSIEUX, A., Maj.  
57 Kelly Place  
BOTTEGO, L. J., MSgt.  
66 Werkheister Place  
BOUCHER, P. T., CWO  
39 Kelly Place  
BOULET, A. B., Civ.  
1107 Princeton  
BOUVIER, F. C., 1/Lt.  
11 Hunsicker Place  
BOWERMAN, M. E., Civ.  
1303 N. Richardson  
BOWERMAN, M. F., Maj.  
25 Alden Place  
BOWERS, R. J., SMSgt.  
2901 W. Fruitland  
BOYLE, E. C., CWO  
821 Apt. B-2-3  
BOZEMAN, J. W., Capt.  
7 W. Eyman  
BRAMLEY, C., Civ.  
3100 Alhambra  
BRANHAM, M. G., Capt.  
1115 S. Michigan  
BRANNON, C. W., MSgt.  
114 W. Wildy Street  
BRASHER, C. O., SSgt.  
2810 S. Lea  
BREAD, O. D., Capt.  
62 Billy Mitchell  
BREWINGTON, R. L., TSgt.  
1209 W. Deming  
BREZOVSKY, J. W., MSgt.  
Bks. 557, Rm. 208  
BRINKER, D. H., TSgt.  
Rt. 2, Box 73  
BRITT, L. C., Civ.  
118 E. Church

BRITTAIN, J. A., MSgt.  
1103 Kenlea Drive  
BRITTON, A. T., MSgt.  
80 E. Eyman  
BRODE, G. L., Civ.  
1501 Highland Road  
BROKAW, M. C., TSgt.  
Apt. 222D G Street  
BROOKIE, D. W., Maj.  
52 W. Byrne  
BROWN, A. E., TSgt.  
1304 S. Lea  
BROWN, G. E., SSgt.  
83 E. Wells  
BROWN, H. L., TSgt.  
53 F Street  
BROWN, R. D., Capt.  
3104 N. Garden  
BROWN, S. L., MSgt.  
84 E. Eyman  
BROWN, T. E., SSgt.  
6 H Street  
BROWN, W. A. JR., Maj.  
47 Kelly Place  
BROWN, W. W., Maj.  
POQ 281, Rm. B-1-4  
BROWNING, D. L., Civ.  
318 E. Lewis  
BRUGGEMAN, A. L., Maj.  
21 W. Wells  
BRUMBAUGH, C. S., Civ.  
1107 Kenlea Drive  
BRUNETTI, A. W., Capt.  
21 Forrest Drive  
BRUNS, E. L., MSgt.  
45 Van Leeven Place  
BRYANT, J. M., Capt.  
3102 Encanto Drive  
BUDDE, B. W., 1/Lt.  
BOQ B-2-4  
BUNCH, A. M., Civ.  
500 E. 23rd Street  
BURBECK, W. E., Civ.  
3006 N. Garden  
BURCHFIELD, W., SSgt.  
91 E. Eyman  
BURINK, J., Maj.  
2307 Cornell Drive  
BURK, E., TSgt.  
1706 N. Delaware  
BURKE, E. J., Civ.  
5 Pine Place  
BURKETT, T. J., 1/Lt.  
706 N. Greenwood  
BURLSON, J. A., MSgt.  
Rt. 2, Box 261  
BURNHAM, R. C., TSgt.  
Lot #2, Monks Trailer  
BURTON, J. E., Maj.  
7 W. Wells  
BUSHNELL, R. M., Capt.  
25 A Street  
BUTTERWORTH, J. E., Civ.  
110 W. Oliver  
BUTTERWORTH, J. R., Maj.  
20 W. Wells  
BUTTRILL, R. G., Civ.  
337 E. Hervey  
BUVALLA, E. C., SSgt.  
919 Pecan Street  
BYERS, W. N., Lt. Col.  
41 W. Byrne  
BYRNE, G. P., Civ.  
711 N. Heights Drive  
BYRNES, C. E., TSgt.  
17 Ruohonen Place  
BYRON, L. L., Civ.  
3409 N. Garden

### C

CADDELL, D. W., Civ.  
VOQ  
CAIN, G., Civ.  
402 S. Kansas  
CAIN, J. M., SSgt.  
Rt. 2, Box 252  
CAIN, W. L., TSgt.  
304 W. Wildy  
CAIRNS, B. R., TSgt.  
78 E. Eyman

CALDWELL, M. J., Maj.  
2202 Carver Drive  
CALMAN, A. Jr., Civ.  
305 Twin Diamond  
CALOFE, D. R., Lt. Col.  
26 W. Byrne  
CANADY, J. B., 1/Lt.  
77 Holloman Place  
CANTU, M., SSgt.  
601 E. Forrest  
CAREY, N. P., 1/Lt.  
68 Will Place  
CARLSON, K. C., MSgt.  
1114 W. Third  
CARRIERE, J. A., Capt.  
1205 W. 7th Street  
CARROLL, E. A., Capt.  
709 S. Delaware  
CARROLL, F. J., Capt.  
705 S. Montana  
CARNES, R. A., MSgt.  
5 E. Byrne  
CARNEY, J. R., Capt.  
106 W. Byrne  
CARPENTER, R. E. Jr., Capt.  
3307 Chiquita Lane  
CARTER, G. H., MSgt.  
Bldg. 536  
CARTER, R. B. Jr., Maj.  
2 B Street  
CARVER, F. W., Civ.  
1714 S. Virginia, Apt. 8  
CASLI, G., 2/Lt.  
821 Apt. B-2-4  
CASCADEN, J., SSgt.  
41 E. Hyman  
CASE, R., Maj.  
27 Alden Place  
CATANACH, R. M., Civ.  
2806 S. Lea  
CAUCHON, J. C. L., CWO  
60 Billy Mitchell Place  
CHALMERS, C. B., Civ.  
1205 Highland Road  
CHAMBERS, C., Civ.  
903 W. Summit  
CHAMPAGNE, P. L., MSgt.  
63 Boley Place  
CHANEY, H. F., Capt.  
11 W. Wells  
CHAPMAN, A. D., SMSgt.  
400 Broken Arrow Road  
CHAPMAN, R. L., 1/Lt.  
BOQ 821 Apt. B-2-5  
CHAPMAN, N. L., Maj.  
3001 Encanto Drive  
CHAPPELL, J. A., Capt.  
4 Langley Place  
CHARLTON, E. A., MSgt.  
Goodnite Trailer Court  
CHAVEZ, D. E., Civ.  
VOQ  
CHEEK, J. F. Jr., MSgt.  
92 Lighthall Place  
CHENEY, E. C., Civ.  
1015 W. Hobbs  
CHESS, W. E., 1/Lt.  
59 Luebke Place  
CHITTUM, P. L., 2/Lt.  
Bldg. 301, Apt. B-2-1  
CHURCHMAN, J. L., SSgt.  
SW Roswell  
CLARK, C. R., TSgt.  
401 S. Richardson  
CLARK, L. T., Civ.  
2912 Emerald Drive  
CLARK, J. D., SSgt.  
104 E. Byrne  
CLARK, J. H., Capt.  
1909 S. Union  
CLARK, W. E., Maj.  
9 Gillespie Place  
CLARK, R. L., MSgt.  
96 Lighthall Place  
CLARKE, J. J., TSgt.  
40 Conde Place  
CLELAND, E. L., Col.  
13 W. Eyman  
CLEVELAND, R. E., Capt.  
23 W. Wells  
CLIFTON, D. A., Civ.  
704 S. Fruitland  
COATS, J. C., Capt.  
53 Wildy Drive  
COCKRUM, N. G., MSgt.  
59 McDonald Place  
COKER, H. M., TSgt.  
Barracks 557  
COLCORD, H. E., SSgt.  
Monks Trailer Ct. Lt.  
COLE, E. R., 1/Lt.  
1508 Pecos Street  
COLE, O. F., Capt.  
BOQ 821 Rm. B-2-7

COLE, R. S., Civ.  
1106 Princeton Avenue  
COLLINS, K. N., Capt.  
91 Holloman Place  
COLLINS, J. W., Civ.  
Unknown  
COLLIS, K. J., TSgt.  
406 Parkview  
COLLUM, W. E., Maj.  
1807 S. Washington  
CONTRERAS, J., A/1C  
Barracks 534  
COOK, S., Capt.  
1908 S. Heights Drive  
COOPER, J. F., Civ.  
2204 W. Juniper  
CORNWELL, G. E., SSgt.  
Goodnite Trailer Court  
COUNTS, T., SSgt.  
1304 E. Hoagland  
COURTNEY, R. E., MSgt.  
Alto, New Mexico  
COX, B. D., 2/Lt.  
Bldg. 820  
COX, J. R., Lt. Col.  
2209 Baylor Avenue  
COX, R. D., Civ.  
81 E. Byrne  
COX, W. H., Lt. Col.  
2 W. Wells  
COY, W. N., TSgt.  
Rt. 2, Box 278 A  
COY, W. R., Civ.  
310 S. Sycamore  
COYNE, J. F., SSgt.  
Barracks 537  
CRAIG, D. L., SMSgt.  
94 Vanderslice  
CRAMER, S. A., TSgt.  
319 E. Church Street  
CRAWFORD, K. R., SSgt.  
508 E. 4th Street  
CRAWFORD, R. A., MSgt.  
37 Brown Place  
CREED, D. B., MSgt.  
Circle W. Trailer Court  
CRISTOFFER, T. L., Civ.  
1609 S. Jackson  
CROUCH, W., Civ.  
302 E. Church  
CROWDUS, C. R., Lt. Col.  
912 Davidson Drive  
CULBAS, C. A., MSgt.  
78 Ramey Place  
CULLISON, M. E., SSgt.  
632 E. Apple  
CUMMINS, L. A., Civ.  
1116 Rancho Road  
CUNICO, J. J., Civ.  
1507 N. Delaware  
CUNNINGHAM, V. M., Civ.  
504 S. Birch  
CURRY, D. K., TSgt.  
18 H Street  
CUSHMAN, J. E., 1/Lt.  
57 Luebke Place  
CYNCH, F., Capt.  
501 La Fonda

## D

DAHL, C. J., 1/Lt.  
6 Thiel Place  
D'ANGELO, W. R., MSgt.  
1 E. Wells  
DALTON, D. A., Capt.  
9 A Street  
DALY, W. J. Jr., Lt. Col.  
29 A Street  
DANIEL, C., Civ.  
309 W. 5th Street  
DANIELSON, R. D., Maj.  
904 Adams Drive  
DARNELL, H., Civ.  
21 Rouhonen Place  
DARNELL, G. R., Capt.  
1502 Pecos  
DARNELL, H. E., Maj.  
3103 N. Garden  
DAVIDS, C. B., SSgt.  
1003 W. Summit  
DAVIS, C. R., Maj.  
61 W. Wells  
DAVIS, G. W., Civ.  
2109 W. Deming  
DAVIS, O. G., Maj.  
607 N. Washington  
DAVISSON, R. L., Maj.  
2306 S. Baylor  
DEAN, B. D., MSgt.  
Trailer City fo Roswell  
DeHORITY, R. E., Civ.  
1501 W. 1st, Apt. 4

DEL FABBRO, B. F., TSgt.  
87 E. Eyman  
DENT, V. H., MSgt.  
67 Boley Place  
DENNEY, R. D., Civ.  
110 N. Washington  
DENNY, L. B., Civ.  
P. O. Box 672  
DENZEL, D. E., Capt.  
79 Holloman  
DEGBURN, G. T. Jr., Capt.  
1911 S. Union  
DEOLIVIERA, M. J., Civ.  
336 E. Hervey  
DERRICK, W. J., 1/Lt.  
78 Will Place  
DePASS, P. A., SSgt.  
15 Reynolds Place  
DEWEY, G. O., Civ.  
311 S. Sequoia  
DIAMOND, H. S., Capt.  
3200 Futura  
DIFRANCISCO, M. M., MSgt.  
Bldg. 556  
DISTELDORF, B. N., 1/Lt.  
BOQ Apt. B-28  
DIXON, C. P., Maj.  
6 Zettle Place  
DOBMETER, A. J., SSgt.  
34 Harris Place  
DONALDSON, H. D., TSgt.  
307 W. 8th Street  
DONALDSON, V. G., Civ.  
307 W. 8th Street  
DONNELL, M., Civ.  
2715 N. Washington  
DONNELLY, B. J., MSgt.  
3 D Street  
DOMINGUEZ, R., SSgt.  
Route 1, Dexter N. M.  
DOUGHERTY, S. R., Civ.  
308 S. Michigan  
DOWNEY, J. W., Capt.  
41 Kelly Place  
DREISS, M. T., Civ.  
1705 W. Walnut  
DRUMHELLER, W. F., TSgt.  
24 E. Martin  
DUDLEY, W. R., Capt.  
33 Geiger Place  
DUFF, L. E., Civ.  
Tinnie, New Mexico  
DUNCAN, W., SSgt.  
Monk's Trailer Court  
DUNSWORTH, A. W., TSgt.  
119 E. Byrne  
DUNWOODY, R. M. Jr., SMSgt.  
815 E. 5th Street  
DUPREE, L., A/1C  
Route 1, Box 6C  
DUTCH, J. W., Civ.  
901 S. Adams Drive  
DYER, W. L., TSgt.  
4 E. Byrne

## E

EARL, H. R., Civ.  
1102 S. Penn  
EASTLING, D. M., Lt. Col.  
21 W. Eyman  
EBERT, L. A., Capt.  
1612 S. Kansas  
ECHABARNE, P., Capt.  
4 Thiel Place  
ECKHOFF, H. J. Jr., Capt.  
15 Forrest Drive  
ECCLESTON, C. R., Civ.  
1500 Highland Road  
EDDY, E. C., Col.  
3 Walker Place  
EDWARDS, E. W., Civ.  
110 E. Church  
EDWARDS, J. B., Maj.  
94 Will Place  
EDMONDS, C. W., Maj.  
35 Langley Place  
EGAN, W. M., Capt.  
1205 W. 7th Street  
ELSEA, H. O. Jr., MSgt.  
20 Neill Place  
ELY, E. J., Capt.  
52 Riverside Drive  
ELLIS, C. V., Civ.  
100 N. Michigan  
ELLIS, V. C., TSgt.  
34 Conde Place  
EMES, L. S., MSgt.  
79 D Street  
ENDERLE, H. J., TSgt.  
701 East 5th Street  
ENYEART, C. P., Maj.  
9 W. Eyman

ENNIS, W. C., SMSgt.  
1911 W. Alameda  
EPPS, E. P., 1/Lt.  
64 Billy Mitchell Place  
ESLICK, A. H., TSgt.  
7 Barlow Place  
ESPINOZA, F., Civ.  
805 E. Mathews  
EVANS, R. E., Maj.  
4 W. Eyman  
EVERHART, J. E., 1/Lt.  
923 Davidson Drive

## F

FAGNER, J. L., Capt.  
10 W. Byrne  
FAIRMAN, H. O., MSgt.  
110 Lighthall Place  
FANT, E. W., Civ.  
1211 Rancho Road  
FATTOR, M. E., Civ.  
1700 B W. 1st Street  
FATTOR, V. J., Civ.  
1700B W. 1st Street  
FELIO, E. E., CMSgt.  
1721 N. Ohio  
FERNAU, D. A., SSgt.  
1715 N. Michigan  
FERNSTROM, J. J., 1/Lt.  
BOQ Bldg. 821, Rm. B-1-6  
FETTER, G. W., Civ.  
409 S. Cedar  
FIELDS, D. R., TSgt.  
1619 S. Kansas  
FILE, E. J., Civ.  
1710 N. Pontiac  
FINK, L. W., MSgt.  
919 Davidson Drive  
FINKEL, M. F., Capt.  
314 E. Church  
FISHER, E., Civ.  
209 S. Washington  
FISHER, S. L., Capt.  
33 Alden Place  
FISK, N. T., 2/Lt.  
Bldg. 821, Apt. B  
FITZGERALD, J. F. Jr., Capt.  
1505 W. Alameda  
FLEENOR, B. L., SSgt.  
Route 1, Box 30F  
FLEIG, J. M., MSgt.  
104 1/2 S. Montana  
FLOOD, T. J., TSgt.  
92 E. Eyman  
FLORA, R. E., TSgt.  
52 E. Byrne  
FLORES, R. N., Capt.  
312 E. Ballard  
FLOWERS, R., Civ.  
612 S. Cedar  
FLOYD, V., TSgt.  
77 Lighthall Place  
FOGLE, E. R., TSgt.  
2803 South Lea  
FORD, J. W., MSgt.  
18 Murphy  
FORD, V. P. Jr., Capt.  
710 S. Cedar  
FORRESTER, T. H., Civ.  
Route 2, Box 247A  
FORSBERG, W. W., Maj.  
5 Langley Place  
FOULK, D. H., Capt.  
1200 E. 1st Street  
FOWLER, W. A., Maj.  
93 Holloman Place  
FOWLER, W. A., Maj.  
2303 Carver Drive  
FOY, C. P. Jr., SSgt.  
3106 N. Richardson  
FRANCOUER, E. J., Civ.  
608 S. Missouri  
FRANKARD, J. M., Capt.  
43 Kelly Place  
FRANKLIN, J. R., Civ.  
310 E. Bonney  
FRASER, R. L., Civ.  
412 Vista Parkway  
FREDERICK, J. L., TSgt.  
523 W. Reed  
FREY, J. O., SMSgt.  
98 E Street  
FREY, K., Civ.  
314 Twin Diamond  
FREYER, G. F., Maj.  
501 Carter Drive  
FRISINGER, M. J., Lt. Col.  
2009 S. Washington  
FROST, W. W., SMSgt.  
1800 S. Monroe  
FUENTES, F., Civ.  
601 S. Fruitland Drive



FULBRIGHT, H. L., TSgt.  
116 W. Oliver  
FUSSELL, R. O., Capt.  
2407 Baylor

## G

GABRIEL, W. W., Maj.  
1615 Mesa Drive  
GADDY, W. G., CMSgt.  
104 S. Kentucky  
GAFFNEY, F., Civ.  
2500 S. Baylor  
GAGLIONE, T. J., TSgt.  
2910 Emerald Drive  
GAMMILL, A. L., Civ.  
VOQ  
GANOTE, M. L., 1/Lt.  
67 Holloman  
GARCIA, A. A., TSgt.  
Bldg. 557  
GARCIA, J., Civ.  
627 N. Richardson  
GARDNER, W. C., TSgt.  
51 Van Lueven Place  
GARLINGER, G. W., SMSgt.  
1508 W. 1st  
GARNER, R. H., Civ.  
211 S. Stanton  
GARRETT, C. R., Maj.  
31 Langley Place  
GARRETT, H. O., Maj.  
87 W. Byrne  
GARVER, K., MSgt.  
16 Neiss Place  
GARY, R. O., 1/Lt.  
1002 W. Buena Vista  
GASTON, J. S., Maj.  
7 Wildy Drive  
GATCHELL, C. C., Lt. Col.  
29 Alden Place  
GATEWOOD, J. C., Civ.  
1615 Monroe  
GAYLOR, G. T., Civ.  
1707 S. Monroe  
GEIGER, S., TSgt.  
89 E. Eyman  
GERBER, G. L., SSgt.  
504 S. Aspen Avenue  
GHOLSTON, T. G., 1/Lt.  
Bldg. 301, Apt. B-2-2  
GIBBONS, O. T., TSgt.  
76 E. Byrne  
GIBBONS, W. J., CWO.  
17 W. Eyman  
GIBSON, C. V., Capt.  
54 Andrews Place  
GIBSON, G. F., Capt.  
707 Adams Drive  
GIBSON, W. F., 1/Lt.  
1412 S. Madison  
GIBSON, W. L., Maj.  
24 Forrest Drive  
GILL, H. J., Maj.  
1001 Adams Drive  
GILLESPIE, J. J., Capt.  
8 W. Wells  
GILMAN, R. T., MSgt.  
617 S. Cedar Street  
GILMER, J. W., Civ.  
1517 N. Union  
GILPIN, H. D., Lt. Col.  
18 B Street  
GINGRAS, R. J., SSgt.  
339 E. Poe Drive  
GIRON, P. H., Civ.  
410 S. Penn  
GIROUX, T. E., MSgt.  
1 D Street  
GIRTON, W. K., TSgt.  
Route 2, Box 256K  
GLAZENER, S. W., Capt.  
6 Bailly Place  
GLENN, C. L., 1/Lt.  
13 W. Wells  
GODDARD, R. K., Capt.  
67 W. Wells  
GOETZE, E. E., 1/Lt.  
86 W. Byrne  
GOHRKE, R. H., Capt.  
2910 Largo  
GOLDBECK, E. B., Maj.  
56 W. Byrne  
GOLDBERGER, A. E., Capt.  
37 W. Wells  
GOLDEN, G. H., SSgt.  
2713 S. Lea Avenue  
GOLDWORTHY, F. M., Civ.  
Route 2, Box 25  
GOODWIN, D., Civ.  
3501 Bandolina  
GOODWIN, G. A., MSgt.  
47 E. Byrne

GOODWIN, Z., Civ.  
1617 S. Kansas  
GONZALES, P. L., Civ.  
305 W. McGaffey  
GORDON, C. F., Maj.  
614 W. Hobbs  
GOSSMAN, J. L., 1/Lt.  
22 W. Byrne Street  
GOUPIL, J. H., SSgt.  
50 Werkheister Place  
GOWAN, W. E., SSgt.  
Bill Adams Trailer Court  
GRAFA, O. W., Civ.  
2404 Cornell  
GRAHAM, J., TSgt.  
8 E. Eyman  
GRAMMER, B. S., MSgt.  
Bldg. 537  
GRAMMER, J. J., Capt.  
68 W. Byrne  
GRAMMER, R. W., SSgt.  
211 E. Hervey  
GRANTHAM, C. H., SSgt.  
39 Van Lueven Place  
GRASSMAN, D. M., MSgt.  
308 E. Frazier Street  
GRANTIOT, R. L., TSgt.  
1611 North Montana  
GRAY, G. E., Civ.  
815 East Albuquerque  
GREEN, H., Civ.  
4 Forrest Place  
GREEN, K. J., Maj.  
3 West Byrne  
GREENE, N. S., MSgt.  
13 Dunbar Place  
GREENWADE, P. V., Maj.  
21 B Street  
GREGORY, L. M., 2/Lt.  
Bldg. 301, Apt. B-2-4  
GREMILLION, H. L., Civ.  
3208 Encanto Drive  
GRICE, J. L., Civ.  
514 Spruce Avenue  
GRIFFEN, W. A., Capt.  
41-43 A Street

## H

HAACK, E., Civ.  
1812 West Third  
HAACK, W. D., Civ.  
1812 West Third  
HAAS, G. E., Capt.  
326 East Lewis  
HACKER, D. A., Civ.  
311 East Hervey  
HAGY, R. F., TSgt.  
63 Powell Place  
HALL, H. F., Civ.  
501 E. Country Club Road  
HALL, R. J., TSgt.  
66 Vandersliver Place  
HALLIBURTON, R. E., MSgt.  
603 North Mexico Drive  
HALVORSON, C. G., Capt.  
1008 South Union  
HALYARD, L. D., Civ.  
913 Davidson Drive  
HAM, W. A., Maj.  
19 B Street  
HAMEL, N. R., TSgt.  
85 East Eyman  
HAMILTON, H. T., Capt.  
34 A Street  
HAMILTON, J. F., TSgt.  
22 H Street  
HAMITER, M. A., Civ.  
1111 South Kentucky  
HAMM, J. G., SSgt.  
95 East Wells  
HAMMER, E. O., Maj.  
805 South Adams Drive  
HAMMOND, J., Civ.  
1513 West Hendricks  
HANLEN, J. R., Lt. Col.  
21 Langley Place  
HANNAFIUS, M. A., SSgt.  
118 East Byrne  
HANNAFIUS, M. R., Civ.  
118 East Byrne  
HANSEN, G. E., TSgt.  
44 East Byrne  
HANSEN, S. E., Maj.  
35 West Wells  
HANSEN, T., SSgt.  
88 East Byrne  
HARDEN, W. L., TSgt.  
18 Neise Place  
HARDIN, L. H., Civ.  
1300 West 8th Street  
HARRINGTON, D., 1/Lt.  
69 Luebke Place

HARRINGTON, H. F., Maj.  
47 A Street  
HARRIS, B. E., SSgt.  
2904 Emerald Drive  
HARRIS, G. A., 1/Lt.  
1718 West Juniper  
HARRIS, H. H., SMSgt.  
100 Lighthall Place  
HARRIS, R. S., SSgt.  
72 East Bryne  
HARRIS, T. T., Civ.  
600 South Fruitland  
HARRISON, E. L., 2/Lt.  
11 Gillespie Place  
HARRISON, P. G., MSgt.  
94 East Eyman  
HARRISON, P. L., Capt.  
1106 South Union  
HART, R. B., SSgt.  
20 Murphy Place  
HARVEY, G. H., Civ.  
1209 West Virginia  
HARVEY, H. J., Civ.  
9 Oak Place  
HARVEY, J. H., Civ.  
1101 West Mathews  
HARVEY, R., Civ.  
9 Oak Place  
HARWOOD, V. C., 1/Lt.  
25 Langley Place  
HASSETT, F. M., Capt.  
3108 North Garden Road  
HASSLER, C. E., Civ.  
None  
HAYES, D. L., Maj.  
501 South Cedar  
HAYHURST, S. J., Civ.  
1516 North Michigan  
HAYMAN, H., Capt.  
21 "A" Street  
HAYS, W. T., MSgt.  
62 "G" Street  
HEARD, T. C., Civ.  
1615 Monroe  
HEARN, B., Lt. Col.  
3116 Futura Drive  
HEBERT, G., SSgt.  
855 Gunnison Circle  
HEFNER, J. D., MSgt.  
710 Adams Drive  
HEIDER, K. L., Maj.  
1706 West 3rd Street  
HEISER, C. H., Capt.  
9 Langley Place  
HENDEN, W. H., Civ.  
2713 Emerald Drive  
HENDERSON, D. E., Capt.  
1611 Pontiac Drive  
HENDERSON, M. T., Maj.  
301 South Atkinson  
HENDERSON, R. B., 2/Lt.  
BOQ, Bldg. 821-B-2-6  
HENDERSON, R. G., Capt.  
24 "A" Street  
HENKLE, C. W., Lt. Col.  
8 Walker Place  
HENRY, C. R., Civ.  
102 East Pear  
HENRY, C. W., SSgt.  
Goodnight Trailer Court  
HENSELIN, D. T., TSgt.  
42 East Wells  
HENSLEY, M. J., MSgt.  
45 East Byrne Street  
HERBERT, F. I., SMSgt.  
47 East Wells Street  
HERD, M. A., 2/Lt.  
Bldg. 301, Apt. B-2-3  
HERNES, R. J., Civ.  
607 Jaffa Street  
HEROLD, P. A., Maj.  
45 West Wells  
HEROLD, R. A., Civ.  
2200 West Juniper  
HESTER, K. E., Capt.  
69 West Wells  
HEUER, G. H., Civ.  
607 South Missouri  
HICKS, D. J., TSgt.  
Monks Trailer Village  
HIGGINS, J. G., Civ.  
None  
HILLIARD, P. P., TSgt.  
607 North Plaza  
HILLIGOSS, J. E., Civ.  
1210 South Washington  
HILLMAN, D. E., Colonel  
1 Walker Place  
HILLS, W. K., Capt.  
1610 South Washington  
HINDMAN, R. F., 2/Lt.  
41 Langley Place  
HINKLE, W. V., Civ.  
1415 East Hendricks

HINMAN, D. D., 1/Lt.  
53 Kelly Place  
HIPPS, B. G., A/IC  
Route 2, Box 253  
HIPPS, R. C., SSgt.  
617 East 6th Street  
HISE, A., SSgt.  
704 West 10th Street  
HISE, B., Civ.  
501 South Sequoia  
HITTLE, L. J., SMSgt.  
702 West Poe Street  
HODGE, S., TSgt.  
2801 East Plaza Drive  
HODGE, W. O., A/IC  
1211 South Elm  
HOFFMAN, L. L., Civ.  
1515 North Ohio  
HOLCOMB, L. F., TSgt.  
Barracks 557, Room 208  
HOLDER, D. L., Capt.  
34 "B" Street  
HOLLAND, J. R., TSgt.  
305 South Lea  
HOLMES, L. L., Civ.  
3112 North Main  
HOLMES, R. S., Maj.  
31 Alden Place  
HOLT, P., Civ.  
505 South Aspen  
HOPE, D. L., TSgt.  
603 Largo  
HOPKINS, W., Civ.  
1716 West First  
HOPPIN, P. C. G., Maj.  
33 "B" Street  
HORN, G., Civ.  
Nurse BOQ  
HORANGIC, N. P., Lt. Col.  
28 West Eyman  
HORSCHMAN, R. L., Lt. Col.  
702 Adams  
HORTON, G. C., SMSgt.  
1613 North Union  
HOUP, R., Civ.  
None  
HOUSEMAN, W. V., TSgt.  
307 Twin Diamond  
HOWARD, T. D., Maj.  
32 Langley Place  
HOWELL, A., Civ.  
#4 Sunshine Drive  
HOYLE, B. C., Maj.  
1202 West Mathews  
HUDDLESTON, V. R., Capt.  
1914 South Union  
HUDSON, O., MSgt.  
29 Brown Place  
HUGHES, L., 1/Lt.  
20 "B" Street  
HUGHES, L. C., SSgt.  
13 I Street  
HULL, R. L., Capt.  
305 South Sycamore  
HUMBLE, J. W., 1/Lt.  
23 West Byrne  
HUMMEL, S. C., SSgt.  
99 East Eyman  
HUMPHREY, D. C., Capt.  
Bldg. 821, Apt. A-4-2  
HUNGATE, R. E., TSgt.  
Box 667A, Route 1  
HUNT, T. J. E., Maj.  
96 West Eyman  
HUNTER, R. L., MSgt.  
1210 West 3rd Street  
HUNTSINGER, J. T., TSgt.  
2705 South Lea Avenue  
HUSEMOLLER, K. E., Lt. Col.  
3210 Futura Drive  
HUTCHISON, B. W., MSgt.  
507 South Sequoia

INGENLOFF, J. F., Capt.  
316 East Lewis Drive  
INGLE, N. E., TSgt.  
208 West Tilden  
INGRAM, S. O., SSgt.  
605 South Ohio  
INMAN, J. W., 1/Lt.  
90 West Byrne Street  
IRVIN, J. E., 1/Lt.  
Bldg. 301, Apt. B-1-1  
IRVINE, A. M., Capt.  
57 "A" Street  
IRVING, R., SSgt.  
1408 South Sherman  
IWAMASA, C. T., Civ.  
1203 South Kentucky

## J

JACKSON, A. R., Capt.  
10 Thiel Place  
JACKSON, J. A., SSgt.  
3702 Bandolina Drive  
JACKSON, J. C., Capt.  
3107 Futura Drive  
JACKSON, J. W., Capt.  
7 Hunsicker  
JACKSON, M. L., TSgt.  
15 Dunbar Place  
JACOBS, D. G., Capt.  
65 Holloman  
JANNELLE, K. A., MSgt.  
44 East Wells  
JANNELLE, T. M., Civ.  
44 East Wells  
JARRATT, P. B., Civ.  
1710 West Walnut  
JARVIS, M. J., Capt.  
911 West Wildy  
JAY, J. O., 2/Lt.  
22 Vaughn Place  
JEFFERSON, J. D., Capt.  
37 Langley Place  
JEFFRESS, J. V., MSgt.  
Bldg. 534  
JELKS, J. W., Civ.  
1902 South Lea  
JENKINS, E., SMSgt.  
512 West Diming  
JESTER, E. B., Civ.  
101 North Delaware  
JETTON, R. H., Civ.  
805 1/2 North Kentucky  
JILLSON, E. T., Maj.  
5 Forrest Drive  
JOHNSON, C. C., Civ.  
2001 North Louisiana  
JOHNS, P. C., MSgt.  
26 East Byrne  
JOHNSON, A., Civ.  
203 East Frazier  
JOHNSON, C. H., TSgt.  
629 East Cherry Street  
JOHNSON, C. S., MSgt.  
1207 West Hobbs  
JOHNSON, E. C., SMSgt.  
31 Brown Place  
JOHNSON, E. T., Capt.  
1706 West Juniper  
JOHNSON, F. E., Civ.  
1409 South Washington  
JOHNSON, G., Capt.  
104 West Byrne  
JOHNSON, L. G., Capt.  
26 "B" Street  
JOHNSON, M. W., Capt.  
8 Thiele Place  
JOHNSON, W. A., Capt.  
913 Davidson Drive  
JOHNSTON, G. W., Capt.  
3006 Futura  
JOHNSTON, H. A., TSgt.  
15 "I" Street  
JOHNSTON, M. E., Maj.  
72 West Byrne  
JONES, J. D., SSgt.  
516 South Fir  
JONES, T. W., Civ.  
504 Jaffa  
JONES, W. T., TSgt.  
46 East Eyman  
JORDON, T., Civ.  
503 South Sycamore  
JUDE, G., 1/Lt.  
24 Andrews Place  
JUNK, A. J., MSgt.  
Barracks 535  
JUSTICE, L. B., Civ.  
Handy Trailer Court

## K

KALEBAUGH, G. C., Maj.  
4 Wildy Drive  
KASCEL, D. F., MSgt.  
68 G Street  
KASTNER, J. R., CWO  
18 Langley Place  
KATZ, H. L., Civ.  
Trailer Village  
KEELER, L. J., MSgt.  
207 East Poe  
KEEVIL, F. H., Civ.  
#3 Forrest Drive  
KEEVIL, J. A., Capt.  
1901 South Union

KELLEY, P., Civ.  
#11 "H" Street  
KELSEY, G. R., MSgt.  
9 East Byrne  
KEMP, B. O., SSgt.  
Ande W Trailer Park, Lot 4  
KENNEDY, J. A., 1/Lt.  
Bldg. 301, Apt. B-1-1  
KENT, J. R., SSgt.  
39 Hyman Place  
KERR, H. F., 1/Lt.  
92 West Byrne  
KETCHAM, D. G., Maj.  
912 West Wildy  
KIKLIS, P. B., Civ.  
706 South Cedar Avenue  
KILNESS, K. F., Lt. Col.  
6 Walker Place  
KIMBLE, J. G., Lt. Col.  
606 South Cedar Avenue  
KIMBRIEL, J. E., Capt.  
908 North Beech  
KING, C. J., Capt.  
2209 South Union  
KING, J. E., Civ.  
3402 Bandolina Drive  
KING, J. L., Capt.  
4 West Byrne  
KING, O. H., Capt.  
8 Wildy Drive  
KING, W. K., Civ.  
709 South Atkinson  
KING, W. R., SSgt.  
1207 West Hobbs  
KINSEY, R. D., Civ.  
511 South Washington  
KIRK, J., Civ.  
500 North Richardson, Apt. 1  
KLANECKY, L. A., Maj.  
16 "A" Street  
KLEIN, V. C., MSgt.  
332 East Ballard  
KLUMP, R. W., Capt.  
37 "A" Street  
KNAPP, R. K., Capt.  
3 West Wells  
KNIGHT, D. A., Capt.  
1112 South Michigan Avenue  
KNIGHT, N. R., Civ.  
908 West 4th Street  
KNIGHT, W. R., TSgt.  
Bldg. 749-Room 62  
KOCUREK, W., TSgt.  
117 West Bland  
KOELBL, J., Civ.  
406 West Hendricks  
KOLODY, S. E., MSgt.  
Route 2, Box 279  
KOONCE, A. C., TSgt.  
1725 North Delaware  
KOST, D. D., Civ.  
1305 North Pennsylvania  
KOTHE, T., TSgt.  
24 "H" Street  
KOTTAS, W. M., Capt.  
2301 Berkley  
KOUBA, J. S., Civ.  
Route 1, Box 146  
KOUTS, E. A., TSgt.  
308 Twin Diamond Road  
KRAUTKRAEMER, J. W., Capt.  
13 "B" Street  
KROENING, H. F., Civ.  
VOQ  
KUBICEK, A. M., MSgt.  
Barracks 556  
KUCHAR, J. E., MSgt.  
37 Del Norte Drive  
KUNG, F. V., 1/Lt.  
56 West Wells  
KUNKO, L. L., Capt.  
809 North Heights Drive

## L

LACKEY, R. W., SSgt.  
2812 South Lea  
LAFON, J. W., Civ.  
1209 West 3rd  
LAMB, F. Y., Maj.  
1600 South Washington  
LAMPERT, W. K., Civ.  
1615 West Tilden  
LAMPERT, Y. E., Civ.  
1615 West Tilden  
LANDRY, A. W., Maj.  
3 West Eyman  
LANE, F. A., Maj.  
1617 Mesa Drive  
LANG, H. L., Civ.  
None  
LAPPIN, J. P., Lt. Col.  
3304 Tierra Berrenda Drive

LAROSE, E. H., SSgt.  
206 East McCune  
LARSON, C. H., Maj.  
200 East Hervey Drive  
LAKSON, J. J., SSgt.  
405 North Shartell Avenue  
LARSON, N. L., Maj.  
38 Langley Place  
LAUBER, E. E., SSgt.  
709 South Montana  
LAUGHERY, D. E., A/1C  
501 South Lea, Apt. A  
LAVELLE, A. B., Capt.  
2404 Baylor Avenue  
LAVELY, R. F., Civ.  
415 South Pine  
LAWRENCE, E. V., SSgt.  
1711 North Pontiac  
LAWSON, F. U., CMS  
405 South Hemlock Avenue  
LAWSON, R., MSgt.  
1615 South Pennsylvania  
LEACH, W. E., Maj.  
16 West Wells  
LEARY, J. P., Lt. Col.  
902 North Beech Avenue  
LEAVELL, A. D., Capt.  
2207 Berkley Drive  
LEE, C. R., SSgt.  
1611 West Hendricks  
LEE, D. M., Capt.  
27 A Street  
LEE, W. H., SMSgt.  
Route 1, Dexter  
LE FEVRE, D. C., SSgt.  
2909 South Lea Avenue  
LEHMAN, T. L., MSgt.  
91 Lighthall Place  
LEMAY, G. D., Maj.  
1105 Rancho Road  
LENOX, J., Capt.  
1202 South Michigan  
LEONARD, H. W., SSgt.  
24 "I" Street  
LEONE, J. A., Maj.  
14 "B" Street  
LERNER, S., Maj.  
24 West Eyman  
LEROY, R., MSgt.  
208 South Missouri  
LESLIE, G. R., Civ.  
102 South Missouri  
LEVERICH, J. W., Civ.  
1705 North Delaware  
LIEFRING, A., CMSgt.  
1618 South Stanton Drive  
LILIUS, J. B., Capt.  
32 Forrest Drive  
LINDSAY, W. G., SSgt.  
Transient Quarters  
LINKER, T. C., MSgt.  
37 Wildy Drive  
LIU, C. K., Capt.  
2307 South Baylor  
LIVSEY, J. D., Civ.  
1205 North Kentucky  
LLOYD, J., Civ.  
205 West 5th  
LOER, E. M., SSgt.  
614 West Jaffa  
LONEY, C. W., 1/Lt.  
3018 Encanto Drive  
LONG, F. P., MSgt.  
43 East Wells  
LOOMIS, J., Maj.  
3101 Delicado Drive  
LOPEZ, J. C., SSgt.  
409 South Holland  
LORENTZEN, A. M., 2/Lt.  
Bldg. 301, Apt. B-1-4  
LOVELL, J. W., MSgt.  
213 East Poe  
LOWERY, G. R., TSgt.  
28 Wildy Drive  
LOWERY, C. E., MSgt.  
320 East Bonney  
LUCAS, E. T., TSgt.  
47 Van Leuven Place  
LUJAN, J. K., MSgt.  
Barracks 535  
LUND, R. N., Maj.  
5 East Eyman  
LUNDGREN, L. E., Civ.  
1013 West Summit  
LUSK, J. M., Capt.  
1100 Baylor Drive  
LUSTIG, B. A., Capt.  
2101 West Juniper  
LYNCH, L. A., MSgt.  
63 "E" Street  
LYNCH, M. A., Civ.  
205 West Forrest  
LYNCH, W. J., A/2C  
Barracks 537

LYONS, G. J., Maj.  
32 Geiger Place  
LYONS, S. M., MSgt.  
1608 South Kansas

## M

MACK, D. W., Lt. Col.  
605 South Aspen  
MAHALEK, J. H., MSgt.  
44 Conde  
MAHER, J. F., TSgt.  
19 Ruohonen  
MAHON, T. J., Maj.  
710 Hervey Drive  
MAHONEY, J. R., Maj.  
1712 South Missouri  
MAIER, E. J., Capt.  
30 "B" Street  
MALLORY, J. S., Maj.  
1805 South Washington  
MALONEY, C. J., Maj.  
36 Weise Place  
MALONEY, W. C., Capt.  
342 East Lewis  
MALOVICH, J. M., Civ.  
13 Riverside Drive  
MALUY, D. C., Lt. Col.  
BOQ A-3-2  
MANCINI, L. A., TSgt.  
1103 Rancho Road  
MANDALE, A. H., Civ.  
512 Fulkerson Drive  
MANN, J. L., SSgt.  
100 East Byrne  
MANUS, G. A., Civ.  
1604 1/2 North Missouri  
MANTZ, R. H., TSgt.  
37 Hyman Place  
MANZI, N. J., MSgt.  
3012 Encanto Drive  
MARACCHINI, J. A., Lt. Col.  
15 "B" Street  
MARENTETTE, J. B., Civ.  
1203 South Michigan  
MAROHL, H. P., Lt. Col.  
403 Chico Drive  
MARONEY, J. R., Maj.  
BOQ  
MARSH, E. C., SSgt.  
505 East Hervey  
MARSHALL, R. P., Capt.  
802 Adams Drive  
MARTIN, C. A., Lt. Col.  
2 "A" Street  
MARTIN, D. M., TSgt.  
100 East 2nd Street  
MARTIN, W. R., SMSgt.  
Route 2, Box 2522  
MARTINEZ, E. E., Capt.  
714 South Cedar  
MARTINEZ, H., MSgt.  
86 Lighthall Place  
MARTINEZ, J. J., Civ.  
111 East Church  
MASSINGILL, J. L., Capt.  
904 West Wildy  
MATHEWS, N., MSgt.  
5 "D" Street  
MATTOX, J. P., Civ.  
903 West Deming  
MATTOX, R. W., Civ.  
3210 Bandolina  
MAULDIN, D. D., Civ.  
404 East Hendricks  
MAULDIN, F. H., Civ.  
2707 Emerald Drive  
MAYENCOURT, H., Civ.  
2400 Baylor  
MAYES, R. B., Civ.  
VOQ  
MAYO, J. L., Lt. Col.  
3112 North Garden Avenue  
MAYS, F. D., Capt.  
21 West Byrne  
McADOO, W. T., Capt.  
600 South Cedar  
McALLISTER, W. W., Maj.  
36 Langley Place  
McCANN, E. C., SSgt.  
95 East Eyman  
McCARTHY, R. E., CWO  
34 Langley Place  
McCHARGUE, A. B., MSgt.  
Johnson Trailer Park  
McCHESNEY, B. M., Capt.  
301 East Ballard  
McCLENDON, L., Lt. Col.  
13 Langley Place  
McCLINTICK, E. B., Maj.  
2208 Berkeley Street  
McCLUNG, H. A., MSgt.  
717 Aspen

McCLURE, K. O., Capt.  
901 West Wildy  
McCLUSKY, S. L., Maj.  
30 East Eymann  
McCOLLUM, M. E., Civ.  
1022 Rancho Drive  
McCOY, D. D., MSgt.  
5 East Wells  
McCUNE, E. A., Capt.  
18 Vaughn Place  
McDONALD, A. T., 1/Lt.  
309 East Church  
McELROY, R., Civ.  
44 Wildy  
McENERY, R. B., MSgt.  
111 South Richardson  
McGOWAN, I. B., Civ.  
300 East Buena Vista  
McGOWAN, T. P., Capt.  
20 "A" Street  
McGRATH, J. H., Capt.  
1908 South Adams Drive  
McGRATH, T. R., SMSgt.  
3 Blocks West Main Gate  
McILVAIN, W. W., Capt.  
1504 South Lea  
McINTIRE, J. C., Maj.  
211 East Bland  
McKEDY, C. R., SSgt.  
16 Capital Place  
McKEEGAN, G. L., SSgt.  
1104 North Union  
McKINNEY, F. L., Capt.  
103 Linda Circle  
McLAUGHLIN, C. C., Lt. Col.  
507 South Hemlock  
McLENDON, N., Civ.  
711 South Pine  
McMILLIAN, S., Civ.  
803 South Adams  
McMURRAY, J. L., Civ.  
305 East Seventh  
McNALLY, J., TSgt.  
Bldg. 748 Room 53  
MEARS, M. P., Civ.  
1710 North Pontiac  
MEDLING, F. E., SSgt.  
2200 West Alameda  
MELSON, F. W., Civ.  
113 East Church  
MENDER, R. A., TSgt.  
2904 South Lea Avenue  
MENDOZA, A. C., Civ.  
218 Harvey Drive  
MERIDETH, W., TSgt.  
Circle Inn Trailer Court  
MERRILL, C. J., MSgt.  
7 East Byrne  
MERRITT, E. A., Capt.  
33 "A" Street  
METCALFE, R. G., Civ.  
10 Riverside Drive  
MEUSE, E. P., TSgt.  
4 Murphy Place  
MEYER, J. W., 2/Lt.  
27 West Wells Street  
MEYERS, A. J., MSgt.  
205 East Lewis Street  
MEYERS, S. P., Capt.  
1517 North Pontiac  
MIETH, N. V., CMSgt.  
Circle W Trailer Court  
MILEY, B. L., Civ.  
2202 South Baylor  
MILLER, A. J., Capt.  
69 Holloman Place  
MILLER, G. I., 1/Lt.  
13 "A" Street  
MILLER, J. P., Civ.  
1980 South Union  
MILLER, J. W., Capt.  
323 East Lewis  
MILLER, L. F., MSgt.  
1810 Plains Park Drive  
MILLER, R. E., TSgt.  
86 East Eymann Place  
MILLER, R. F., TSgt.  
Barracks 537  
MILLER, R. S., Civ.  
1616 West Juniper Street  
MILNER, W. R., Civ.  
609 South Lea  
MISURACA, J. I., Maj.  
46 Andrews Place  
MITCHELL, E. E., Civ.  
414 South Sycamore  
MITCHELL, J. D., SMSgt.  
46 Werkheister  
MITCHELL, M. A., Civ.  
1406 South Adams  
MIXON, J. A., MSgt.  
419 Cedar Street  
MOHR, W. E., Capt.  
39 Langley Place

MOISE, B. J., Capt.  
3102 Garden Street  
MOLLICONE, B., Civ.  
803 South Sequoia  
MONK, M. D., Civ.  
503 East 7th  
MONROE, D. A., Maj.  
1 "A" Street  
MONTGOMERY, W. A., MSgt.  
608 South Birch  
MORALES, J. R., Civ.  
828 East 5th  
MORGAN, D., TSgt.  
Bldg. 537  
MORGAN, G. F., Capt.  
2303 Cornell Drive  
MORGAN, G. W., Civ.  
507A South Richardson  
MOORE, G. H., Maj.  
1507 South Missouri Street  
MOORE, I., Civ.  
Box 246, Dexter  
MOORE, J. A., 1/Lt.  
1200 East Bland  
MOORE, M. N., Col.  
1 Walker Place  
MORRIS, B. C., Capt.  
1616 Mesa Drive  
MORRIS, C. R., TSgt.  
Bldg. 503, Apt. 12  
Orchard Park, Dexter  
MORRIS, H., Maj.  
3103 Alhambra Drive  
MORRIS, H. R., MSgt.  
55 Van Lueven  
MORRISON, R. B., Capt.  
317 East Frazier  
MUHL, J. H., Maj.  
15 West Eymann  
MULLINS, J. C., MSgt.  
14 Capital Place  
MURPHY, C., MSgt.  
909 South Plains Park Drive  
MURPHY, D. E., Civ.  
903 Adams Drive  
MURPHY, G. R., 1/Lt.  
612 South Washington  
MURPHY, J. M., SSgt.  
98 East Eymann  
MURRAY, R., Lt. Col.  
3204 Chiquita Lane  
MUSTCATO, J. P., Civ.  
1510 South Pecos

## N

NADON, N. C., Maj.  
2303 South Berkeley Drive  
NAILEN, J. T., SSgt.  
813 North Pennsylvania  
NEADEAU, M. H., Capt.  
3114 Futura Drive  
NEASON, T. E., Civ.  
407 South Pine  
NEIDIG, R. M., MSgt.  
97 Lighthall Place  
NEISH, H. R., TSgt.  
1311 North Montana  
NELSON, R. O., MSgt.  
602 North Kentucky Avenue  
NELMS, J. J., Civ.  
#10 Riverside Drive  
NEWMAN, J. D., Civ.  
1204 North Kentucky  
NEWMAN, W. I., Capt.  
500 East Vista  
NEWSOME, A. D., SSgt.  
829 East Fifth Street  
NEY, E. J., MSgt.  
Bldg. 749, Room 26  
NICHOLS, C. G., Civ.  
601 North Ohio  
NICKLAS, W. L., Capt.  
33 Langley Place  
NIX, D. D., MSgt.  
603 West McGaffey  
NOMMAY, L. M., MSgt.  
19 Reynolds Place  
NORINE, H. A., Civ.  
416 South Hemlock  
NORMAN, W. R., Civ.  
BOQ  
NORRIS, H., MSgt.  
3015 Encanto Drive  
NORTON, A. H., Capt.  
407 South Washington  
NORTON, F. I., Capt.  
2202 West Alameda  
NORTON, W. R., Lt. Col.  
34 Geiger Place  
NOTESTINE, R. J., MSgt.  
22 East Byrne Street

NOVAK, E. F., Capt.  
11 Deborah Drive

## O

O'BRIEN, R. C., Capt.  
3117 Delicado Drive  
OBERLY, R. G., TSgt.  
Apt. 217A, G Street  
O'CONNOR, R. D., Col.  
7 Walker Place  
OHMERT, H. R., Civ.  
1021 South Plains Park  
OLIVER, W. R., Civ.  
210 East Mathews  
OLSON, J. L., 1/Lt.  
Bldg. 821  
ONYON, E. C., Civ.  
711 North Greenwood  
ORENDORFF, D. L., Civ.  
900 West Summit  
ORTIZ, G. M., Civ.  
1206 North Kentucky  
OSBURN, B. F., Capt.  
35 Alden Street  
OSIER, N. L., Civ.  
1610 South Stanton  
OTERO, J. T., Civ.  
300 South Union  
OTT, J. N., TSgt.  
Odeal Trailer Park  
OUTLAW, J. A., SMSgt.  
Bldg. 535  
OVERSTREET, A., Capt.  
1 "B" Street  
OWEN, F. G., SSgt.  
Bldg. 217, Apt. C  
OWEN, J. M., Capt.  
42 Geiger Place  
OWENS, J. E., TSgt.  
51 McDonald Place  
OYLER, R. E., Maj.  
1302 West Deming

## P

PAINTER, D., MSgt.  
709 North Greenwood Avenue  
PALMQUIST, L. M., 2/Lt.  
Bldg. 301, Apt. B-2-2  
PALOMBO, P. A., MSgt.  
50 Ray Place  
PARHAM, C. L., MSgt.  
23 Reynolds Place  
PARKER, C., Capt.  
65 West Wells  
PARKS, C. W., MSgt.  
18 Barlow Place  
PARKS, W. G., Civ.  
413 South Sequoia  
PARSONS, G. L., SSgt.  
218 Apt. C, "G" Street  
PARSONS, S. P., Col.  
#2 Walker Place  
PARTIN, G. G., Maj.  
508 La Fonda  
PATRICK, E. L., MSgt.  
4 East Eymann  
PATTEN, D. H., SSgt.  
87 East Byrne  
PATTERSON, J. P., MSgt.  
605 West Jaffa Street  
PATTERSON, J. R., SSgt.  
Base Gate  
PATTI, S. J., Lt. Col.  
93 Holloman Place  
PATTON, E. L., Civ.  
1107 West 7th  
PAUS, P. W., SSgt.  
328 East Ballard  
PAYNE, J. W., Maj.  
81 Fitzgerald Place  
PEACOCK, J. J., Maj.  
603 West McCune  
PEACOCK, R. M., Civ.  
702 North Richardson  
PEARSON, G. P., Civ.  
300 East Lewis  
PEARSON, J. M., Maj.  
11 West Eymann  
PEARSON, J. P., Civ.  
330 East Lewis  
PEARSON, W. E., MSgt.  
Route 2, Box 260  
PECK, L. D., Civ.  
1013 West Summit  
PENA, M., SSgt.  
802 West 19th Street  
PEOPLES, R. D., SSgt.  
612 East Mathews  
PERKINS, R. M., Lt. Col.  
710 South Heights

PERRY, D. N., MSgt.  
70 Vanderslice  
PERRY, J. C., Civ.  
601 Rosemary Lane  
PESANTE, J. B., Maj.  
1712 South Stanton  
PESCHKA, J. A., Civ.  
119 South Lea  
PETERS, F., SSgt.  
312 East Harvey  
PETERS, V. H., Civ.  
1613 Monroe  
PETERSON, K. H., Capt.  
3117 Encanto Drive  
LIVER, W. R., Civ.  
1719 North Michigan  
PETTY, T., SSgt.  
Bldg. 534  
PFIELSTICKER, K. J., MSgt.  
1609 South Missouri  
PHILLIPS, H., Civ.  
Crane Motel  
PHILLIPS, H. C., Civ.  
1311 Highland Road  
PHILIPS, M. F., Capt.  
16 "A" Street  
PICCIANO, C. E., SSgt.  
57 McDonald  
PICCIONI, M. A., Capt.  
45 Kelly Place  
PICHES, C. S., Capt.  
706 North Garden  
PICINICH, A. A., Capt.  
5 "A" Street  
PIERCE, J. W., SSgt.  
120 East Byrne  
PILCHER, M. R., Civ.  
1809 Capitan Avenue  
PITTS, A. S., Lt. Col.  
4 West Wells  
PITTS, R. M., SSgt.  
706 North Beech  
PLATT, C. H., Lt. Col.  
9 Walker Place  
PLOSUNAK, P., TSgt.  
32 Conde Place  
PLUMMER, G. B., MSgt.  
99 "E" Street  
POLONSKY, S. I., Maj.  
100 West Byrne  
POORE, G. A., 2/Lt.  
BOQ 821  
POPEJOY, L. A., Civ.  
21 Cedar Drive  
PORTER, C. L., Capt.  
1900 South Union  
PORTER, R. L., Capt.  
211 East McCune  
POTTER, A. M., TSgt.  
513 East 6th  
POWELL, R. L., 1/Lt.  
BOQ B-1-3  
POWELL, J., Civ.  
1201 1/2 North Kentucky  
POWELL, S. V., 2/Lt.  
71 Holloman  
POWERS, W. J., Capt.  
609 South Cedar  
PRATER, G., Civ.  
Goodnight Trailer Court  
PRICE, G. L., Capt.  
85 Holloman  
PRIDGEN, E. E., TSgt.  
2214 West Juniper  
PROULX, M. V., Civ.  
Bldg. 821  
PROVINE, C. H., Civ.  
507A South Richardson  
PUCKETT, J. M., Civ.  
905 West 1st  
PYFROM, S. C., Capt.  
14-16 Langley

## Q

QUACKENBUSH, F. F., Civ.  
1301 West Deming  
QUALLEY, L., TSgt.  
707 South Fruitland  
QUESES, A., SMSgt.  
13 Ruohonen Place  
QUINN, W. L., MSgt.  
705 North Beech  
QUINTANA, E. M., Civ.  
213 East Church

## R

RADZINSKI, J. J., Maj.  
42 Langley Place



RAMEY, K., Capt.  
602 La Fonda Drive  
RANC, P. E., TSgt.  
112 Lighthall Place  
RANDOLPH, J. P., TSgt.  
210 East Church  
RANKIN, C. L., MSgt.  
Bldg. 535  
RANKIN, J. P., CWO  
51 West Wells  
RARDIN, J. A., SSgt.  
816 West 12th  
RATNER, A., Maj.  
Luehke Place  
RAY, S. D., Maj.  
57 West Wells  
RAYSON, J. H., Capt.  
12 "C" Street  
REDMANN, L. J., Maj.  
33 Kelly Place  
REED, B. L., 2/Lt.  
Bldg. 301, Apt. B-2-3  
REED, L. A., SSgt.  
91 East Byrne  
REED, M. B., Civ.  
None  
REES, J. J., SMSgt.  
32 East Byrne  
REESE, W. D., Capt.  
10 Bailey Place  
REEVES, C. H., MSgt.  
9 Wildy Drive  
REIDEN, A., Civ.  
117 West Oliver  
REIFSTECK, R. L., Capt.  
804 East 5th Street  
REINHARD, E. O., Capt.  
59 Luehke Place  
REMBOLDT, A. L., Civ.  
7 Deborah Drive  
RENFRO, R. T., Lt. Col.  
1024 Rancho Road  
RENFROE, G., Capt.  
20 West Byrne  
REYNOLDS, C. H., 1/Lt.  
Bldg. 821, Apt. B-1-5  
REYNOLDS, L. E., Civ.  
#20 Crane Motel  
REYNOLDS, P. R., Civ.  
1209 1/2 North Virginia  
RICE, J. P., A/1C  
Bldg. 749, Room 70  
RICE, L. D., Civ.  
310 North Union Avenue  
RICHARDS, G. C., Capt.  
173 Adams Drive  
RICHARDSON, L. P., Lt. Col.  
4 Zettie Place  
RICHARDSON, R. S., MSgt.  
2703 South Lea  
RICHARDSON, V. E., Maj.  
29 "B" Street  
RICHMAN, J. G., Civ.  
206 East Church  
RILEY, L. R., Lt. Col.  
604 South Heights  
RISEDEEN, R., Lt. Col.  
18 West Wells  
RISHEL, H. D., MSgt.  
41 Van Leuven Place  
RITCHIE, R. G., Maj.  
25-27 "A" Street  
ROBERTS, C. E., MSgt.  
1800 Plains Park Drive  
ROBERTS, J. D., Capt.  
1808 South Washington  
ROBERTS, J. P., Maj.  
6 West Wells  
ROBERTS, M. E., Civ.  
1612 Monroe Drive  
ROBERTSON, L. E., SSgt.  
1619 East Pontiac Street  
ROBINSON, C. R., SMSgt.  
27 D Street  
ROBINSON, J. P., TSgt.  
71 Powell Place  
ROBINSON, L. J., Civ.  
#10 "T" Street  
ROBINSON, R. G., A/2C  
Barracks 534  
ROBINSON, W. C., Civ.  
304 North Washington Avenue  
RODGERS, E. R., TSgt.  
30 Harris Place  
ROESCH, D. F., Maj.  
704 South Heights Drive  
ROGERS, D. J., 1/Lt.  
66 Billy Mitchell  
ROGERS, H., Civ.  
1000 Greenwood Drive  
ROGERS, R. G., TSgt.  
Bldg. 749, Room 23  
ROGERS, W. C., Capt.  
48 West Byrne

ROJAS, M. V., Civ.  
Route 2, Box 256  
ROMANEK, G. E., Capt.  
24 West Byrne  
ROME, H. J., Maj.  
49 West Wells  
RONDEAU, R. G., Civ.  
600 Vista Parkway  
RONDEAU, P. J., MSgt.  
600 Vista Parkway  
ROSALES, G., Civ.  
1703 North Ohio  
ROSANBALM, J. W., Capt.  
322 East Ballard  
ROSE, E., Civ.  
1008 West 4th  
ROSIELLO, J. J., Civ.  
VOQ Bldg. 913 Room 9  
ROSS, P., Civ.  
500 South Aspen Avenue  
ROSS, S., Civ.  
2 Forrest Place  
ROTH, C. W., Lt. Col.  
5 Walker Place  
ROTH, E., Lt. Col.  
615 South Cedar Street  
ROTHLISBERGER, W. O., Capt.  
102 West Byrne  
ROUND, A. L., MSgt.  
73 East Byrne  
ROUSE, E. C., Civ.  
308 East Hervey  
ROUSSEAU, D. L., TSgt.  
608 West Deming  
ROWDEN, V. D., MSgt.  
71 "D" Street  
ROWELL, A. Y., CWO  
2809 South Lea  
ROWEN, B. C., Maj.  
17 Hunsicker Place  
ROZENDALE, D., Civ.  
208 North Michigan  
RUTTER, K. W., Civ.  
119 East Frazier  
RUPPE, N. L., Civ.  
2104 West Juniper  
RUPPERT, J. C., CMSgt.  
709 South Plaza  
RUSTVOLD, C. A., Capt.  
700 West Poe  
RUTHERFORD, H. L., Civ.  
1105 South Kentucky  
RUTHERFORD, J. E., Maj.  
53 West Byrne  
RUYBALID, B. L., Civ.  
505 South Missouri  
RUZIC, J. V., Capt.  
610 La Fonda Drive

## S

SAFRIET, D. A., Civ.  
404 South Missouri  
SALYER, J., Civ.  
2705 Gayes Drive  
SAMMONS, T. R., Maj.  
51 Kelly Place  
SANCHEZ, E. L., Civ.  
Route 2, Box 254  
SANCHEZ, M. A., Civ.  
1513 North Kansas Street  
SANCHEZ, R., SSgt.  
Route 2, Box 2000  
SANDERS, B. B., Capt.  
Bldg. 301, Apt. A-1-1  
SANDERS, L. N., Capt.  
None  
SANDLER, S. H., MSgt.  
80 "G" Street  
SANDOVAL, A., Civ.  
210 1/2 East Albuquerque  
SANDOVAL, J. V., Capt.  
2911 Largo  
SANDOVAL, R., Civ.  
Route 1, Dexter  
SANFORD, L. N., Civ.  
11 Wildy Drive  
SARRACINO, S. R., Civ.  
606 Jaffa  
SASSER, G. E., TSgt.  
317 East Poe  
SAULSBURY, J. L., Capt.  
87 Holloman Place  
SAVIDGE, D. E., Lt. Col.  
19 East Eymann  
SAXE, N., Civ.  
405 South Sycamore  
SCARANO, V. T., Maj.  
63 West Eymann  
SCARMEN, M. E., Capt.  
27 "B" Street  
SCHEAF, E. L., TSgt.  
804 West 4th Street  
SCHECHTER, P. E., 1/Lt.  
Bldg. 820  
SCHILLER, A. O., MSgt.  
602 South Cedar  
SCHNEITER, R. A., MSgt.  
300 East Lewis  
SCHNITKER, W. T., SMSgt.  
90 East Eymann Street  
SCHOFIELD, J. R., MSgt.  
81 Lighthall Place  
SCHREIBER, B. L., Civ.  
304 South Hemlock  
SCHROEDER, W. M., 1/Lt.  
1013 West Summit  
SCHROEDER, W., 1/Lt.  
1013 West Summit  
SCHUETTRUM, D. L., TSgt.  
53 McDonald Place  
SCHULER, R. H., Civ.  
704 South Washington  
SCHWAN, C. C., 1/Lt.  
Bldg. 821, Apt. B-1-5  
SCHWARTZ, W. R., Capt.  
2009 South Lea  
SCORRANO, V. R., Maj.  
400 South Union  
SCOTT, B. I., Civ.  
1618 West Walnut  
SCOTT, T. L., SMSgt.  
704 West Poe Street  
SCROGGINS, A. J., SSgt.  
109 East Byrne  
SCROGGINS, H. C., Civ.  
1615 Monroe  
SEARS, D. R., Civ.  
2711 South Emerald Drive  
SEARS, F. L., Civ.  
2711 South Emerald Drive  
SEIBERT, C. D., MSgt.  
2915 Largo Street  
SEIDEL, R. E. M. MSgt.  
608 South Fruitland  
SELF, R., Civ.  
Trailer City Court  
SENKEL, B. W., Capt.  
12 Wildy Drive  
SERRANO, A. V., 2/Lt.  
BOQ 821  
SEWARD, W. B., Maj.  
5 West Wells  
SHANK, R. E., Maj.  
12 "B" Street  
SHATZER, R. C., Civ.  
411 South Sycamore  
SHAYER, H. M., Civ.  
808 West 9th  
SHAW, F. S., TSgt.  
307 East Church  
SHEPARD, G. L., MSgt.  
17 Reynolds  
SHERER, F. S., Civ.  
306 North Washington  
SHERR, N. L., MSgt.  
Barracks 534  
SHERMAN, E. B., Civ.  
1405 South Adams  
SHEROUSE, L. L., Civ.  
1729 North Ohio  
SHERWOOD, J. P., SMSgt.  
39 Brown Place  
SHIPLEY, B. E., 2/Lt.  
Bldg. 301, Apt. B-2-4  
SHOCKLEY, W. E., Capt.  
1609 South Kansas  
SHORTTRIDGE, J., Civ.  
305 South Birch  
SHOUP, C. R., SSgt.  
30 East Byrne  
SHUETTRUM, D., TSgt.  
53 McDonald Place  
SIEGFREID, K. P., Lt. Col.  
2503 Baylor Drive  
SIGLER, R. E., MSgt.  
60 Werkheister Place  
SILER, J. R., Civ.  
1202 Baylor Drive  
SILL, W. G., MSgt.  
Barracks 534  
SIMON, J. J., TSgt.  
110 North Missouri  
SIMPSON, J. R., Maj.  
3308 Bandolina Avenue  
SIMS, A. H., TSgt.  
75 Lighthall Place  
SIMS, C., SSgt.  
Bldg. 872 Gunnison  
SIMS, R. E., MSgt.  
1021 South Pennsylvania Ave.  
SINN, E. W., Civ.  
1603 South Kentucky  
SKEETERS, F. L., TSgt.  
Bldg. 223-B

SKIBBE, H. W., Maj.  
1909 South Adams  
SLANINA, W., TSgt.  
Bldg. 216, Apt. "C"  
SLATER, D., Civ.  
1211 South Washington  
SLEPICKA, D. E., Civ.  
1007 West Summit  
SLOAN, V., Civ.  
1019 North Plains Park Drive  
SLOWIAK, P. F., Lt. Col.  
19 West Wells  
SMILEY, O. B., MSgt.  
3603 Bandolina Drive  
SMITH, C. P., Civ.  
Route 2, Box 252 A  
SMITH, C. R., 1/Lt.  
16 "B" Street  
SMITH, C. S., Capt.  
1511 North Ohio  
SMITH, C. G., TSgt.  
Bldg. 534  
SMITH, G. D., Capt.  
42 West Byrne  
SMITH, J. D., SSgt.  
72 East Wells  
SMITH, R. C., TSgt.  
Smith Trailer Court  
SMITH, R. W., SMSgt.  
3306 Chiquita Lane  
SMITH, T. L., SSgt.  
45 East Wells  
SMITH, W. H., MSgt.  
Route 2, Box 255A  
SMITH, W. S., Civ.  
416 South Fir  
SMOTHERS, B. E., MSgt.  
312 East Lewis  
SMOTHERS, R., SSgt.  
205 East Reed  
SMOTHERS, V. H., MSgt.  
2905 Emerald Drive  
SMUGERESKY, A. A., Civ.  
900 North Orchard  
SNIDER, B. W., Capt.  
88 West Byrne  
SOMMER, F. J., Maj.  
1809 Western Avenue  
SORENSEN, S. D., Maj.  
24 Langley Place  
SORK, L. R., MSgt.  
Bldg. 536  
SOSAYA, H., Civ.  
301 West Alameda, Apt. L  
SOTELO, R., Civ.  
406 West 13th  
SOUZA, W. A., 1/Lt.  
Bldg. 301, Apt. B-1-2  
SPARKS, T. H., TSgt.  
1604 North Washington  
SPEAR, L. B., TSgt.  
1207 North Kansas Avenue  
SPEEGLE, C. J., Civ.  
700 South Plaza  
SPENCER, R., SSgt.  
512 East Mathews  
SPIESMAN, J. W., Maj.  
29 West Eymann  
ST. AMANT, H. M., SSgt.  
48 Werkheister Place  
STANG, T. A., 2/Lt.  
75 Holloman  
STANLEY, H. L., MSgt.  
23 Ruohonen Place  
STANTEN, A., Capt.  
85 Fitzgerald  
STARKE, R. L., Capt.  
34 Weise Place  
STENZEL, A. H., Civ.  
514 Fulkerson Drive  
STEPHENS, J. E., MSgt.  
29 Van Leuven Place  
STEPHENSON, D. B., TSgt.  
1905 West Juniper Street  
STEPHENSON, J. M., 1/Lt.  
97 West Eymann  
STETSON, O. M., Civ.  
604 South Union  
STEVENS, L., Civ.  
1020 Crescent Drive  
STEVIK, M. W., Capt.  
Goodnight Trailer Court  
STEWART, A. G., 1/Lt.  
98 West Byrne  
STEWART, V. G., TSgt.  
1507 South Michigan  
STICKER, W. C., Maj.  
15 West Wells  
STILL, E. E., Capt.  
1907 South Union  
STINKER, R. L., Civ.  
1509 West Hendricks  
STOCKTON, L. E., Maj.  
1513 South Washington Ave.

# STOERMER - ZONER

STOERMER, J. A., Lt. Col.  
31 "B" Street  
STONE, H. J., Lt. Col.  
14 West Eyman  
STONE, J. W., Maj.  
703 North Heights  
STONE, L. F., Maj.  
309 East Van Buren  
STONE, R. J., Capt.  
3108 Bandolina  
STOUT, B., MSgt.  
405 Pine  
STOUT, H. N., SSgt.  
Bldg. 106, Apt. 4, Orchard  
Park, Dexter  
STRONG, J. M., Maj.  
39 West Wells  
STUHR, I. R., Maj.  
75 Fitzgerald Place  
STUKENBURG, E. G., Civ.  
27 East Byrne  
SULLIVAN, C., Civ.  
3406 Bandolina Drive  
SULLIVAN, C. F., Civ.  
3404 Bandolina Drive  
SULLIVAN, E. M., Capt.  
1412 South Madison  
SULLIVAN, J. R., Capt.  
Bldg. 821, Apt. A-2  
SUMNER, R. C., MSgt.  
62 Werkheister Place  
SUMMERS, D. A., MSgt.  
407 East Deming  
SUTTLES, D. B., TSgt.  
Apt. 40, Orchard Park  
SUTTON, B. J., Civ.  
914 Pecan Drive  
SWANSON, C. M. 1/Lt.  
602 South Lea  
SWANSON, J. W., Lt. Col.  
602 South Lea  
SWAYZEE, C. W., CWO  
25 West Wells Street  
SWIFT, C. W., Civ.  
Route 2, Box 256  
SWIHART, D. L., 2/Lt.  
18 Langley Place  
SZABO, G. J., Maj.  
1915 South Union Avenue

## T

TAFOYA, A., TSgt.  
Apt. 209C, "G" Street  
TANNER, B. J., Civ.  
Mt. View Trailer Court  
TARRO, N., Civ.  
808 West Mathews  
TARSHES, M., MSgt.  
62 Ray Place  
TATUM, G. D., Capt.  
61 Kelly Place  
TAYLOR, U. S., Maj.  
10 West Wells  
TAYLOR, V. P., 2/Lt.  
94 West Byrne  
TAYLOR, W. W., MSgt.  
1704 North Ohio  
TEALE, L. V., Capt.  
17 West Wells Street  
TEGLAS, J. G., Capt.  
44 West Byrne  
TEIGEN, M. H., MSgt.  
49 Van Lueven Place  
TEMPLE, L. F., TSgt.  
2 "G" Street  
TERRY, J. M., Capt.  
8 Zettle Place  
THAXTON, O. R., CWO  
3002 Encanto Drive  
THELE, R. L., SSgt.  
2807 South Lea  
THOMAS, D. D., Civ.  
608 West 5th  
THOMAS, J. E., MSgt.  
84 "G" Street  
THOMPSON, B., Civ.  
208 Jefferson  
THOMPSON, B. V., SMSgt.  
Route #2, Box 248  
THOMPSON, E. J., TSgt.  
Lot D 6 Circle Inn Trailer Ct.  
THOMPSON, F. B., Civ.  
604 La Fonda  
THOMPSON, J. U., SSgt.  
5 "H" Street  
THOMPSON, T. A., MSgt.  
88 Lighthall Place  
THOMPSON, W. K., Maj.  
3105 Futura Drive  
THORNTON, A. E., MSgt.  
67 East Byrne  
THORNTON, J. D., Capt.  
408 South Cypress

THYGERSON, J. C., Capt.  
52 Andrews Place  
TILLAGE, R., SSgt.  
Bldg. 748, Room 44  
TIPPIN, G. I., Civ.  
610 Vista Parkway  
TOLLEFSON, J. L., 1/Lt.  
35 Wildy Drive  
TOMAN, J., Capt.  
7 Gillespie Place  
TOZIER, L. L., Civ.  
Trailer City, North Auto Route  
TRACY, J. A., CMSgt.  
40 East Wells  
TRIEB, M., Capt.  
20 Vaughn  
TRIPLETT, H., Civ.  
25 East Wells  
TRIPLETT, J. E., TSgt.  
25 East Wells  
TRIPP, H. G., Capt.  
905 Hervey Drive  
TRUELOVE, L. R., MSgt.  
Route #2, Box 146B  
TRUJILLO, A. O., Civ.  
606 West Deming  
TRUMBULL, R. R., Capt.  
514 Cedar  
TUCKER, R. F., MSgt.  
307 South Atkinson  
TUCKER, W. T., Civ.  
609 North Kentucky  
TUGGLE, J. C., Civ.  
408 North Kentucky  
TURLEY, D. L., SSgt.  
1605 South Stanton Avenue  
TURNER, W. B., Maj.  
1613 South Missouri  
TURNER, W. L., Maj.  
1613 South Missouri  
TWERS, C. J., TSgt.  
26 Neiss Place

## U

ULMER, I. L., Capt.  
8 West Byrne  
UNDERHILL, H. W., Maj.  
Bldg. 821, Apt. B-1-4  
UNGERMAN, A. G., Civ.  
Box 252M, Route 2  
UPCHURCH, L. J., MSgt.  
608 South Missouri

## V

VALENTI, F. J., TSgt.  
Bldg. 536  
VALLE, R., 1/Lt.  
49 Kelly Place  
VANDERVEER, J. D., Maj.  
BOQ Bldg. 821  
VAN HORN, A. E., 1/Lt.  
504 South Hemlock  
VARELA, A., Civ.  
1105 North Union  
VAUGHN, F. S., 1/Lt.  
1914 South Union Avenue  
VIGIL, D. A., Civ.  
710 North Greenwood  
VOELZKE, O. W., Lt. Col.  
510 Fulkerson Drive  
VOLK, T. L., Maj.  
1006 North Plains Park Drive  
VOLKING, W. D., TSgt.  
Smith's Trailer Court  
VOLOVAR, A. J., Civ.  
508 North Richardson  
VON DORN, F. O., Maj.  
40 Langley Place  
VOORHEES, F., TSgt.  
Bldg. 534  
VORHIES, M. E., Capt.  
51 Wildy Drive

## W

WADE, W. L., Capt.  
Bldg. 821, Apt. A27  
WADSWORTH, J. M., SMSgt.  
8 East Byrne Street  
WAECHTLER, E. A., MSgt.  
321 East Ballard Street  
WAGGONER, F. J., Civ.  
P. O. Box 351  
WAGNER, H. P., Lt. Col.  
1105 South Pennsylvania  
WAHL, M. G., MSgt.  
416 South Birch Avenue  
WAHLBORG, R. E., Maj.  
307 Hondo Drive  
WALDEN, A. O., Capt.  
1613 South Missouri

WALDON, E. L., Maj.  
6 Langley Place  
WALKER, I. L., Civ.  
2 "C" Street  
WALKER, W. R., MSgt.  
2527 North Main  
WALL, J. C., Civ.  
604 Largo  
WALLACE, J. W., SSgt.  
Monks Trailer Village  
WALLER, J. T., Maj.  
63 "A" Street  
WALLS, J. L., Capt.  
12 West Wells  
WALSH, J. R., Maj.  
606 La Fonda Drive  
WALTON, R. G., SMSgt.  
403 South Pine Street  
WARD, W. M., TSgt.  
1907 West Juniper  
WARNER, D. K., A/IC  
Barracks 537, Room 221  
WARNER, J. G., 2/Lt.  
43 West Byrne  
WASHER, H. F., TSgt.  
16 East Eyman  
WATSON, J. R., Capt.  
12 Bailey Place  
WEATHERFORD, D. L., Capt.  
413 South Fir Avenue  
WEBER, R. D., Civ.  
36 Cedar Drive  
WEBB, E. W., MSgt.  
57 Wildy Drive  
WECKER, E. J., MSgt.  
1004 Buena Vista  
WEEHLER, E. R., Capt.  
806 Adams Drive  
WEISINGER, D. M., Civ.  
33 Cedar Drive  
WEISINGER, E. C., MSgt.  
33 Cedar Drive  
WEISS, R. D., SSgt.  
518 South Aspen  
WELCH, C. Q., SSgt.  
1203 North Maple  
WELCH, J. M., Capt.  
1502 South Washington  
WELLS, D. L., CMSgt.  
63 McDonald Place  
WERNER, M. H., Maj.  
404 West Alameda  
WERNER, R. T., Capt.  
83 Holloman Place  
WHELAN, R. A., 1/Lt.  
1151 North Ohio  
WHITACRE, C. D., Civ.  
1614 West Walnut  
WHITE, C. E., Capt.  
36 Geiger Place  
WHITE, C. R., SSgt.  
Bldg. 537  
WHITE, C. R., MSgt.  
309 East Frazier  
WHITE, H. E., MSgt.  
36 Conde Place  
WHITE, L. K., Capt.  
38 West Byrne  
WHITE, R. O., TSgt.  
33 Jackson Place  
WHITE, S. R., MSgt.  
803 South Heights Drive  
WHITEAKER, R. G., Civ.  
1816 West 3rd  
WHITTENBURG, D. J., SSgt.  
Barracks 537  
WICHMANN, D. J., Capt.  
46 West Byrne  
WICKERSHAM, C. R., TSgt.  
403 South Aspen  
WICKS, C. A., A/IC  
407 South Ohio  
WICKS, R. A., SSgt.  
612 Greenbriar  
WICKSTROM, E. R., TSgt.  
208 East Church  
WIDENHOUSE, E. A., Civ.  
1305 South Adams  
WIDNEY, J. H., Capt.  
504 Trailer Heart Road  
WIEGMAN, L. A., Maj.  
204 East Church  
WIESENBAUGH, R. F., MSgt.  
6 Martin Street  
WILDER, L. P., 2/Lt.  
68 West Byrne  
WILCOX, J. W., Maj.  
506 South Sequoia  
WILKES, W. S., SSgt.  
1503 West First  
WILLIAMS, E. F., Maj.  
70 West Byrne  
WILLIAMS, G. M., TSgt.  
Monks Trailer Court

WILLIAMS, R. H., Capt.  
12 Langley Place  
WILLIAMS, W. J., CMSgt.  
811 North Richardson Street  
WILLIAMS, W. S., TSgt.  
322 South Church Street  
WILLIAMSON, D. S., Capt.  
500 La Fonda Drive  
WILLIS, V. C., Capt.  
13 Hunsicker Place  
WILLS, G. W., TSgt.  
407 South Birch  
WILSON, D. S., Maj.  
92 Will Place  
WILSON, E., TSgt.  
3604 Bandolina Drive  
WILSON, J. W., SSgt.  
91 East Wells  
WILSON, R. L., Capt.  
905 West Eyman  
WINSTANLEY, J. R., TSgt.  
13 Reynolds Place  
WISE, D. E., TSgt.  
9 East Wells  
WISE, H. C., Lt. Col.  
Bldg. 821  
WITCHEY, J. H., CWO  
1610 South Madison  
WITHEE, M. P., Civ.  
2206 South Washington  
WITHERSPOON, O. E., Capt.  
37 Kelly Place  
WOLF, C. G., SMSgt.  
61 "E" Street  
WON, R. C. S., TSgt.  
65 "E" Street  
WOOD, A., Civ.  
408 South Richardson  
WOOD, H., Capt.  
73 Fitzgerald Place  
WOOD, H. D., Lt. Col.  
909 Wildy  
WOOTEN, M. E., MSgt.  
69 Powell Place  
WORMWOOD, R. K., TSgt.  
28 East Eyman  
WRIGHT, D. E., Maj.  
713 Hervey Drive  
WRIGHT, D. G., Capt.  
1206 West Gayle  
WRIGHT, P. L., Civ.  
913 West Forest  
WRIGHT, R. J., Lt. Col.  
51 "A" Street  
WURSCHINGER, F. P., Maj.  
509 Fulkerson Drive

## Y

YAGER, A. J., SSgt.  
708 Buena Vista  
YAHN, S. M., Capt.  
8 Bailey Place  
YANCEY, W. D., Maj.  
13 West Wells  
YARNELL, M. C., Civ.  
1415 East Alameda  
YATES, D. L., Capt.  
1610 South Michigan  
YEYNA, J., Civ.  
Monk's Trailer Village  
YOUNG, G., Capt.  
1204 Rancho Road  
YOUNG, J. M., TSgt.  
205 East McCune  
YOUNG, R. H., Civ.  
Goodnight Trailer Court  
YUCHNITZ, F. J., TSgt.  
6 Murphy Place  
YUPCAVAGE, A. F., Maj.  
702 Hervey Drive

## Z

ZAJICEK, W., Civ.  
100 East Bland  
ZEIGLER, L. R., TSgt.  
74 East Byrne  
ZEITLER, E. A., Civ.  
1501 South Washington  
ZERRIEN, R. A., TSgt.  
Smith Trailer Court  
ZIGMOND, J., TSgt.  
Barracks 537  
ZIMMERMAN, J. M., Civ.  
25 "D" Street  
ZIRKLE, J. R., MSgt.  
69 East Lighthall  
ZONER, J. C., 2/Lt.  
5 Hunsicker



# WALKER DIRECTORY & GUIDE

## CLASSIFIED BUYING SECTION

ISSUE NO. 7

AUGUST, 1961

**AMBULANCE SERVICE**  
Ballard Funeral Home  
910 South Main

MA 2-1121

**ARMY & NAVY SURPLUS**  
Army-Navy Surplus  
110 North Main

MA 5-5850

(see our ad outside back cover)

**AUTOMOBILE DEALERS—NEW CARS**

### ACE AUTO COMPANY, INC.

LINCOLN — MERCURY — COMET — ENGLISH FORD  
SALES — SERVICE — PARTS

901 South Main

MA 2-4442

**Bragg-Levers Motor Co.**

1515 West 2nd

MA 2-2840

(see our ad this classification)

**Robbins Motors, Inc.**

205 North Virginia

MA 2-7170

**Valley Chevrolet Company**

6th and North Main

MA 2-4100

(see our ad outside back cover)

**AUTOMOBILE DEALERS—USED CARS**

**Bragg-Levers Motor Co.**

1515 West Second

MA 2-2840

(see our ad under Automobile Dealers - New Cars)

**Medlin Auto Salvage**

1 Mile North of Main Gate

MA 2-5816

(see our ad under Automobile Parts)

**AUTOMOBILE—GLASS**

**Medlin Auto Salvage**

1 Mile North of Main Gate

MA 2-5816

(see our ad under Automobile Parts)

**AUTOMOBILE PARTS**

**Medlin Auto Salvage**

1 Mile North of Main Gate

MA 2-5816

(see our ad this classification)

**AUTOMOBILE RADIATORS**

**Star Radiator & Muffler Service**

714 South Main

MA 2-8230

(see our ad outside back cover)

**AUTOMOBILE RENTAL**

**Hertz Rent-A-Car**

Municipal Airport, Roswell

MA 2-6480

**AUTOMOBILE REPAIRING**

**Bud Chester & Son Auto Service**

South of Roswell on Air Base Road

MA 2-3689

**Paschall's Garage**

418 East McGaffey

MA 2-6787

(see our ad this classification)

### ROSWELL TUNE-UP SERVICE

Scientific Engine Analyzing A Specialty

Electrical, Brake and General Repair Service

102 West Deming

MA 2-6601

**CADILLAC - OLDSMOBILE**

SALES — SERVICE

### BRAGG-LEVERS MOTOR CO.

1515 W. 2nd

MA 2-2840

"Deal with A Buddy"

USED AUTO PARTS  
HOBBY SHOP DISCOUNTS  
WE BUY WRECKED CARS

Complete Line of Used Cars



MA 2-5816



### MEDLIN AUTO SALVAGE

One Mile North of Main Gate



### PASCHALL'S GARAGE

AUTOMATIC  
TRANSMISSION  
Specialist

General Repair  
TUNE-UPS

418 E. McGaffey

MA 2-6787



### AMONETT SAFETY LANE

Bear Wheel Aligning

Brakes—Wheel Balancing—Tire Truing

507 South Main

MA 2-6471

**AUTOMOBILE TRANSMISSION REPAIR**

Specializing in Hydramatic, Power Glides,  
and Dynaflo Transmissions

### BUSBY AUTO SERVICE

GENERAL REPAIR

J. B. Busby, Owner  
Phone MA 3-2110

930 East McGaffey  
Roswell, New Mexico

**AUTOMOBILE—WHEEL ALIGNING**

Amonett Safety Lane

507 South Main

MA 2-6471

(see our ad this classification)

**BANKS**

The First National Bank of Roswell

226 North Main

MA 2-3441



## DAY HOUSE OF BEAUTY



PERSONALITY HAIR STYLING  
2 CONVENIENT LOCATIONS

706 West 2nd  
MA 2-7561

BX Bldg., Walker AFB  
FI 7-5411  
EXT. 2627

## MERLE NORMAN COSMETIC STUDIO



You Are Invited To  
"Try Before You Buy"

706 W. 2nd MA 2-7561



## STYLE MOR BEAUTY SALON

OLIVE COOPER, Owner SEVEN OPERATORS TO SERVE YOU MR. CHARLES, Stylist  
PRINCESS NYLA COSMETICS

FINEST BEAUTY SERVICE FOR DISCRIMINATING WOMEN

418 N. MAIN Free Parking — Rear MA 2-5401

• SHOP THE YELLOW PAGES •

## ROSWELL CYCLE SHOP

SCHWINN BICYCLES — SALES and SERVICE  
"We Know Our Cycles"  
Lawn Mower Service

We Sharpen Saws and All Cutlery  
706 N. Main MA 2-4471

## Rocky Mountain Wholesale Co. INC.

CANDIES

Brach's  
McDonald's Chocolates

CIGARS

Tampa—Dutch Masters  
Phillies—Muriels

1121 East Second Street MA 2-5260

## First Baptist Church

Dr. John Parrott  
Pastor

Connell Taylor  
Music-Education

Sunday School .....9:30 A.M.  
Worship .....10:50 A.M.  
Training Union .....6:15 P.M.  
Worship .....7:30 P.M.  
Wednesday Prayer Meeting .....7:30 P.M.  
5th at Pennsylvania 623-2640

## FIRST METHODIST CHURCH

AUSTIN H. DILLON, D.D., Pastor

Lawrence Menefee, Associate Pastor

### SCHEDULE OF SERVICES:

Morning Worship.....8:30 and 10:50 A.M.  
Church School .....9:30 A.M.  
Methodist Youth Fellowship.....6:00 P.M.  
Evening Worship.....7:30 P.M.  
Weekly Prayer Service, Wed.....7:30 P.M.

Second and Pennsylvania MA 2-1881  
Pastor's Residence—MA 2-3773

### BEAUTY SALONS

Day House of Beauty  
706 West 2nd MA 2-7561  
BX Bldg. Walker AFB FI 7-5411 — Ext. 2627  
(see our ad this classification)

Roswell Beauty Shop  
301 North Pennsylvania Ave. MA 2-2780  
Style Mor Beauty Salon  
418 North Main MA 2-5401  
(see our ad this classification)

### BICYCLES

Roswell Cycle Shop  
706 North Main MA 2-4471  
(see our ad this classification)

### BUS LINES

New Mexico Transportation Co.  
515 North Main MA 2-2510

### CANDIES

Rocky Mountain Wholesale Co., Inc.  
1121 East Second MA 2-5260  
(see our ad this classification)

### CHURCHES

First Baptist Church  
500 North Pennsylvania Ave. 623-2640  
(see our ad this classification)  
First Methodist Church  
Second & Pennsylvania MA 2-1881  
(see our ad this classification)  
First Presbyterian Church  
400 West Third MA 2-4910

### CLEANERS

Bailey's Cleaners  
1301 North Main MA 2-4801  
(see our ad this classification)

**Bailey's**

"Not How Cheap But How Good"

## CLEANERS & TAILORS

Cash and Carry Pick-Up and Delivery  
1301 North Main MA 2-4801



## CLOTHING—RETAIL

Levine's Department Store  
223 North Main ..... MA 2-4838  
(see our ad under Department Stores)

## COSMETICS

Merle Norman Cosmetic Studio  
706 West 2nd ..... MA 2-7561  
(see our ad under Beauty Salons)

## DEPARTMENT STORES

Levine's Department Store  
223 North Main Street ..... MA 2-4838  
(see our ad this classification)

**WARDS**  
MONTGOMERY WARD



N Main & 2nd ..... MA 2-6441

United Department Store  
2nd & Main Street ..... MA 2-7251

## DRUGGISTS

A-B-G Drug Co.  
Air Base Gate ..... FI 7-2348  
(see our ad this classification)

## FLORISTS

## BARRINGER FLORAL

FLOWERS FOR ALL OCCASIONS

MA 2-4261 ..... MA 2-1590  
214 N. RICHARDSON

## FLOOR COVERINGS

Reyes Floor Covering  
616 South Main ..... MA 3-0198

## FROZEN FOOD LOCKERS

Roswell Frozen Food Locker  
620 South Main ..... MA 2-2451  
(see our ad this classification)

## FURNITURE—NEW

Colony House Maple Shop  
1410 South Main ..... MA 3-3620

## FURNITURE—NEW AND USED

Wilson Furniture  
412 North Main ..... 622-3501

## FUNERAL HOMES

Ballard Funeral Home  
Member by Invitation — National Selected Morticians  
910 South Main ..... MA 2-1121

## GROCERS—RETAIL

## Shaw's Grocery and Market

L. U. SHAW

Staple and Fancy Groceries, Vegetables and Meats

BEST MEAT IN TOWN

406 West Second ..... MA 2-3930 & MA 2-3931

### "IT'S SMART TO PAY CASH AND LESS AT LEVINE'S"

**LEVINE'S**

Complete For You and Your Home Open Fri. and Sat. Until 8  
Men's - Women's - Children's Clothing in Evening 52 Wks. A Year  
Plus Shoes & Home Furnishings  
**YOUR DOWNTOWN DEPARTMENT STORE**  
Levine's Dept. Store — 223 N. Main ..... MA 2-4838



## A-B-G DRUG CO.

• Prescription Specialists •

FREE DELIVERY

At Air Base Gate

FI 7-2348

## ROSWELL FROZEN FOOD LOCKER

COMPLETE LOCKER SERVICE

- Food Financing Wild Game and
- Locker Rentals All Meats Processed
- Wholesale Meats For Home Freezers

620 S. MAIN ..... MA 2-2451

## NICKSON HOTEL

COFFEE SHOP ..... DINING ROOM  
COCKTAIL LOUNGE

We Cater to Special Parties

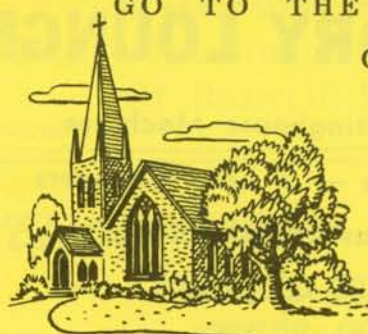
123 East 5th Street ..... MA 2-0420

## New Mexico Life Insurance Co.

Complete Life Insurance  
Coverage and Investments

MA 3-2010 ..... MA 3-1485

GO TO THE CHURCH  
OF YOUR  
CHOICE



## HOSPITALS

Saint Mary's Hospital  
School of Nursing  
1501 South Main ..... 622-1110

## HOTELS

Nickson Hotel  
123 East 5th ..... MA 2-0420  
(see our ad this classification)

## INCOME TAX PREPARATION

(See "Tax Return Preparation")

## INSURANCE

New Mexico Life Insurance Co.  
Roswell ..... MA 3-2010 - MA 3-1485  
(see our ad this classification)

## INSURANCE—GENERAL

International Service Insurance Co.  
J. D. Lamontine, Agent  
At Main Gate — P.O. Box 1551, Roswell ..... FI 7-2554



**DALE****MORRISON****AGENCY**

- LIFE INSURANCE
- ACCIDENT & HEALTH
- AUTO, FIRE & CASUALTY
- REAL ESTATE
- MILITARY INSURANCE
- ESTATE PLANNING

*Representing*

- FIDELITY UNION LIFE
- PRUDENTIAL
- GENERAL AMERICAN
- AMERICAN GENERAL
- JEFFERSON STANDARD
- NEW ENGLAND MUTUAL

**OFFICE**

404 S. Richardson

**PHONE**

623-3333

## COIN OPERATED LAUNDROMATS 2 LOCATIONS

### East Second St. Laundromat

1113 E. 2nd St. MA 2-9602

### Suds 'N Fluff Laundromat

2514-A N. Main MA 2-9564

56 WESTINGHOUSE WASHERS  
15-50-LB. DRYERS — 2 SPINNER EXTRACTORS  
4-25 LB. WASHERS (FOR LARGE ITEMS)  
Rain Soft Water — Soap & Bleach Dispensers

Air Conditioned

## LAUNDRY LOUNGE

46 Westinghouse Machines

10 Dryers — 2 Coin Changers

Washer Extractor

25-Lb. Load

20c Per Washer Load

25c Dries Two Washer Loads

Open 24 Hours

409 E. McGaffey

MA 2-9679

**INVESTMENTS**

New Mexico Life Insurance Co.

Roswell MA 3-2010 - MA 3-1485

(see our ad under Insurance)

**JEWELERS**

Huff's

222 North Main MA 2-7180**LAUNDRIES—SELF SERVICE**

East Second Street Laundromat

1113 East 2nd MA 2-9602

(see our ad this classification)

Laundry Lounge

409 East McGaffey Street MA 2-9679

(see our ad this classification)

Suds 'N Fluff Laundromat

2514-A North Main MA 2-9564**LOANS**

Beneficial Finance Company

328 N. Richardson Ave., Roswell MA 2-3820**LOANS—AUTOMOBILE**

Government Employees Finance Co.

J. D. Lamontine, Agent

At Main Gate — P.O. Box 1551, Roswell FI 7-2554**MEATS—WHOLESALE**

Fletcher and Co., Inc.—Wholesale Meats

Ask About Our Food Plan

100 North Lincoln MA 2-4631**MEN'S CLOTHING**

The Model, Inc.

216 North Main MA 2-5180**MORTGAGES**

Roswell Mortgage Co.

VA &amp; FHA Home Loans

209 West 3rd MA 2-3076**MOTELS**1003 North Main MA 2-2110**CENTRAL MOTEL**

Modern Beauty Rest Beds Downtown

Air Conditioned—Tile Showers &amp; Tubs—Reasonable

**SPRING RIVER MOTEL**1013 North Main MA 2-1140

Western Motel

1710 West Second MA 2-9556**MOTOR SCOOTERS**

Roswell Cushman Sales Co.

1705 S.E. Main MA 2-4974**MOVERS**

Associated Moving &amp; Storage Co.

102-106 South Garden MA 3-3460

(see our ad this classification)

**MUSIC INSTRUCTION**

Alexander Music Studio

205 North Missouri MA 2-8926**MUSIC STORES**

Pianos &amp; Organs

"Everything Musical"

**Magnavox**

205 North Main

MA 2-5630

**INSURANCE—LIFE**

Dale Morrison Agency

404 South Richardson 623-3333

(see our ad this classification)

Fidelity Union Life Insurance Co.

404 South Richardson 623-3333

(see our ad this classification)

Jefferson Standard Insurance Co.

404 South Richardson 623-3333

(see our ad this classification)

Prudential Insurance Company

404 South Richardson 623-3333

(see our ad this classification)



**OPTOMETRISTS**

L. F. Fry  
101 North Richardson ..... MA 2-1380

**ORTHOPEDIC SHOES**

Richmond & Chewning  
Broadmoor Shopping Center ..... MA 2-1191  
(See our ad under Shoes)

**PACKING & CRATING**

Associated Moving & Storage Co.  
102-106 South Garden ..... MA 3-3460  
(see our ad under Movers)

**PAWN BROKERS**

**E-Z LOANS**

LUGGAGE—CLOTHING—WATCHES—CAMERAS  
RECORD PLAYERS—RADIOS—GUNS—APPLIANCES

East side Air Base Gate—Two Story Bldg. FI 7-2381

**READY-TO-WEAR**

Fashion Center  
100 North Union ..... MA 2-8961

**REAL ESTATE**

Home Planning Development Co., Inc.  
100 Linda Vista Blvd., Roswell, N. M. ..... 622-4604  
Mesa Park

Exclusive Mesa Park  
Swimming Pool and Private Park  
2406 Carver Drive

Realty Investment Co. of Roswell, Inc.  
116 North Main ..... MA 2-5541

(see our ad this classification)

Charles F. Smith Construction, Inc.  
200 South Main ..... MA 2-2020

(see our ad this classification)

**RELIGIOUS INSTRUCTION**

First Baptist Church  
5th at Pennsylvania ..... 623-2640  
(see our ad under Churches)

**RENTALS**

United Rent-All  
709 North Virginia ..... MA 2-3106  
(see our ad this classification)

**CASH?**

*Just say the word!*



**Just pick up the phone —**

tell Beneficial how much cash you want. Then, in one visit to the office, get the cash you want today for any good reason—leave, emergencies, bill clean-up, you-name-it!

You'll also get Beneficial's International Credit Card, honored for extra cash at any one of over 1250 affiliated Beneficial offices in U.S., Canada, Alaska, Hawaii, England, Australia. No matter where you travel or are transferred, no matter where you're stationed, remember: when you want cash, just say the word—"You're the boss" at Beneficial.

**LOANS \$25 to \$1000**

328 North Richardson Avenue  
(Across from the Post Office)

MA 2-3820 ..... Roswell, New Mexico

**BENEFICIAL**

FINANCE CO.

LOANS — INSURANCE — REAL ESTATE  
PROPERTY MANAGEMENT

Realty Investment Company  
Of Roswell, Inc.

116 North Main

MA 2-5541

**YELLOW PAGES**

*tell who buys-sells  
rents-repairs*

**ASSOCIATED MOVING & STORAGE CO.**

102-106 South Garden St.

Roswell, New Mexico

AGENTS FOR: **LYON VAN LINES, INC.**

Phone

MA 3-3460



Phone

MA 3-3460

**EXCELLENT FIREPROOF STORAGE FACILITIES**  
**LONG DISTANCE MOVING SERVICE TO ALL 50 STATES**  
**PACKING & CRATING — WARDROBES — CHINA & SILVER CONTAINERS**  
**EXPERT PACKERS & MOVERS**



# CHARLES F. SMITH

## Builder

FHA MILITARY LOANS

GI LOANS AVAILABLE

200 S. Main

MA 2-2020

ROLLAWAYS

TOOLS

*Rental Service Center*

**UNITED RENT-ALLS**

*"We Rent Most Anything"*

709 N. Virginia

MA 2-3106

TRACTORS

TRAILERS

### RESTAURANTS

*Cecil's*

MA 2-7300

Dining Rooms  
Coffee Shop  
Cocktail Lounge

Open 6 A.M. - 12 P.M.  
Closed Sundays

2103 North Main

### RESTAURANT SUPPLIES & EQUIPMENT

**JENNINGS**  
**SHOWCASE & FIXTURE CO.**

Restaurant Supplies & Equipment  
Also

Mercury Outboard Motors  
Dorsett & Gaspar & Powercat Boats

1008 West Tilden

MA 2-6390

### ROOFERS

Hamilton Roofing Company  
1704 S.E. Main

MA 2-3041

### SECRETARIAL SERVICE

E. J. Barton for Roswell Secretarial Service  
116 Nickson Hotel & 413 N. Virginia

MA 3-1412 - MA 3-1377

### SERVICE STATIONS



*Bud's*  
*Cosden*  
*Service*



711 South Main

MA 2-3101

### SHOES

Richmond & Chewning

Broadmoor Shopping Center, 1010 S. Main ..... MA 2-1191  
(see our ad this classification)

### SHOES—ORTHOPEDIC

Richmond & Chewning

Broadmoor Shopping Center ..... MA 2-1191  
(see our ad under Shoes)

### SHOES—REPAIRING

## ELLIS HOBBS SHOE SERVICE

HAND MADE BOOTS — SHOE REPAIRING

Auto-Soler for Ladies Shoes

Hand-Tooled Leather Goods

Phone Main 3-0713

414 North Main

### STORAGE

Associated Moving & Storage Co.

102-106 South Garden ..... MA 3-3460  
(See our ad under Movers)

### SURVEYORS—LAND

Hall Surveying Co.

512 E. 5th Street ..... MA 3-3101

### TAVERNS

Colonial Club

419 East Second ..... MA 2-9465  
(see our ad this classification)

### TAX RETURN PREPARATION

Donoho's Tax Service

500 East 2nd ..... MA 2-5637

Harvey, J. G., Tax and Accounting Service

108 South Pennsylvania ..... MA 3-1590

### THEATRES

Frontier Theatres, Inc.

112 North Main ..... MA 2-5311  
(see our ad this classification)

### THEATRES—DOWNTOWN

Plains Theatre

112 North Main ..... MA 2-5311  
(see our ad this classification)

Yucca Theatre

124 West 3rd ..... MA 2-5312  
(see our ad this classification)

*Richmond & Chewning* **FOOTWEAR**

BROADMOOR SHOPPING CENTER

1010 S. MAIN

THE MOST COMPLETE LINE OF MEN,  
WOMEN & CHILDREN'S SHOES IN  
NEW MEXICO, NATIONALLY ADVERTISED  
BRANDS.  
THE ONLY COMPLETE ORTHOPEDIC  
DEPARTMENT IN ROSWELL.

MA 2-1191