

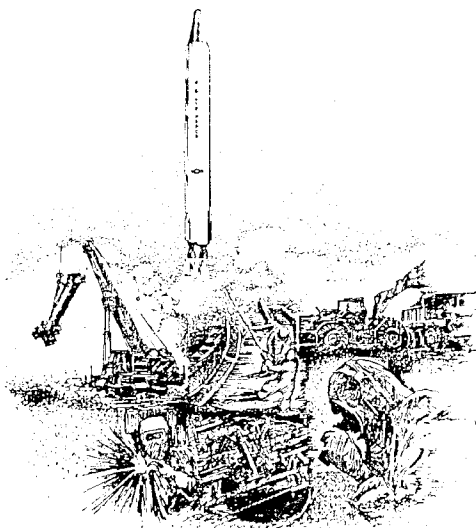


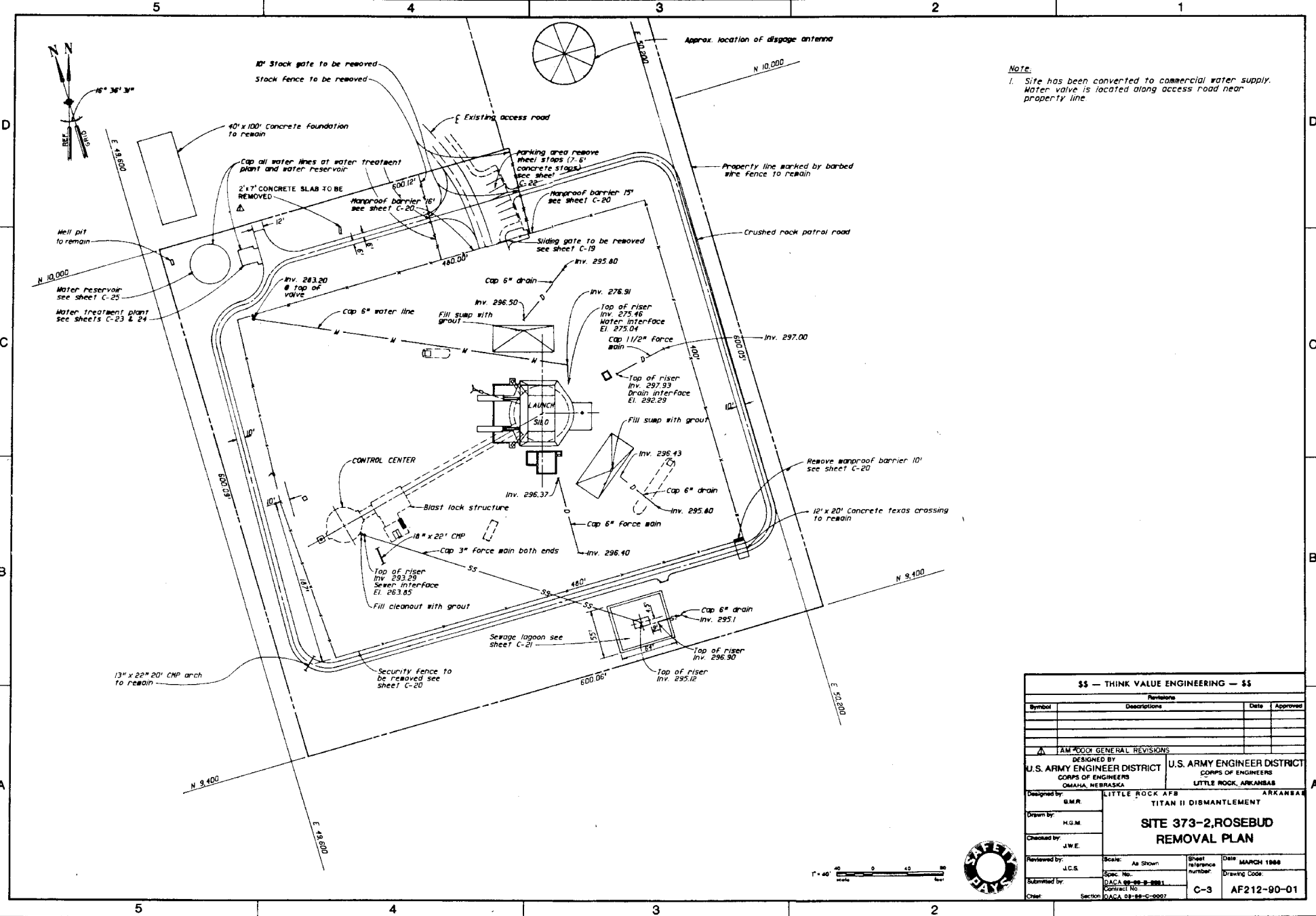
US Army Corps
of Engineers
Omaha District

TITAN II DISMANTLEMENT

LITTLE ROCK, A. F. B.

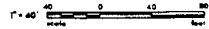
LITTLE ROCK, ARKANSAS

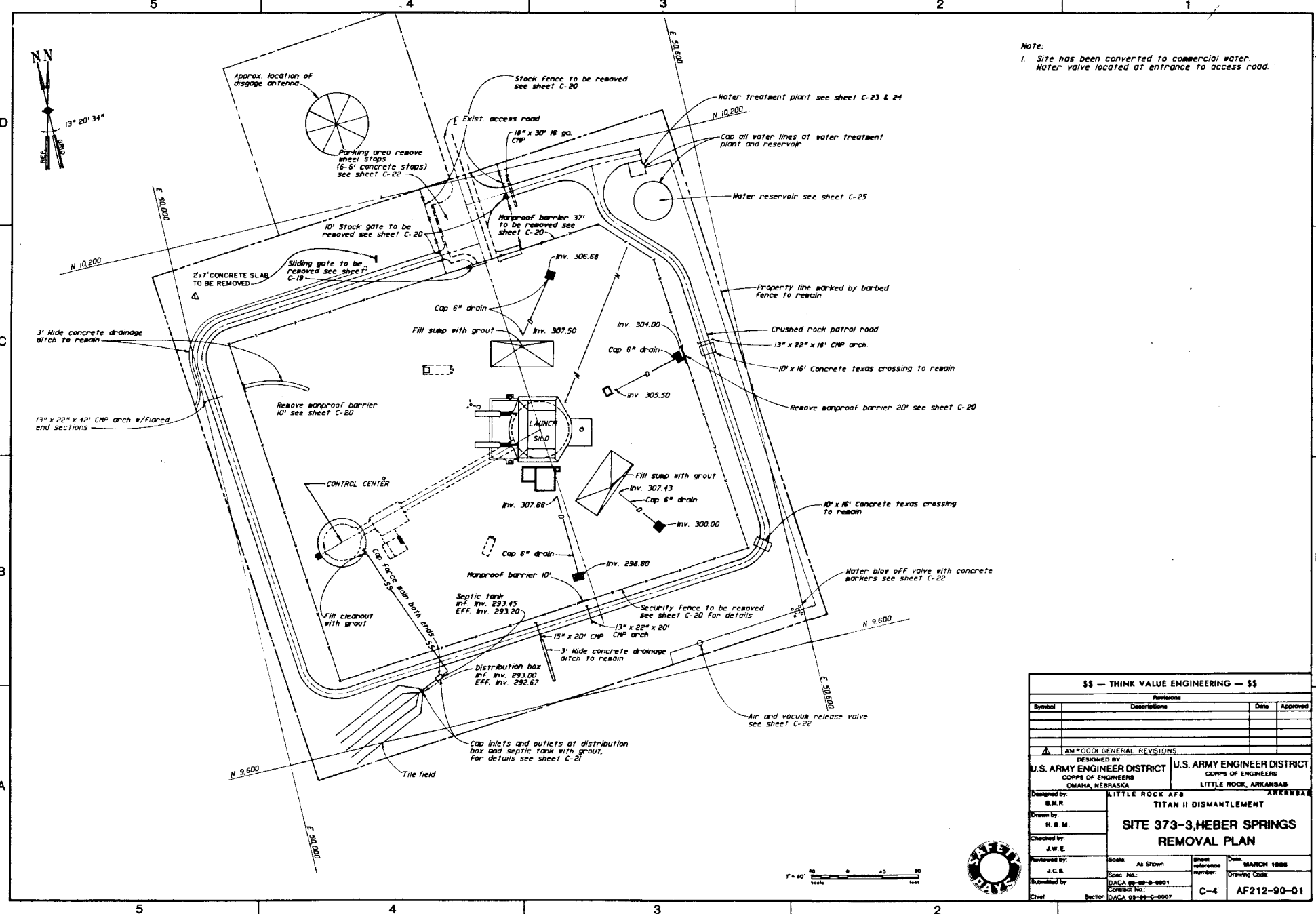




NOTE:
 1. Site has been converted to commercial water supply. Water valve is located along access road near property line.

\$\$ — THINK VALUE ENGINEERING — \$\$			
Revisions		Date	Approved
Symbol	Descriptions		
AM 4000 GENERAL REVISIONS			
DESIGNED BY U.S. ARMY ENGINEER DISTRICT CORPS OF ENGINEERS OMAHA, NEBRASKA		U.S. ARMY ENGINEER DISTRICT CORPS OF ENGINEERS LITTLE ROCK, ARKANSAS	
Designed by:	G.M.R.	LITTLE ROCK AFB ARKANSAS	
Drawn by:	H.G.M.	TITAN II DISMANTLEMENT	
Checked by:	J.W.E.	SITE 373-2, ROSEBUD REMOVAL PLAN	
Reviewed by:	J.C.S.	Scale: As Shown	Sheet reference number: C-3
Submitted by:		Spec. No.: DACG 48-26-2-2001	Date: MARCH 1968
Contract No.:		Drawing Code:	
Order:	Section DACG 48-26-C-0007		AF212-90-01





Note:
 1. Site has been converted to commercial water.
 Water valve located at entrance to access road.

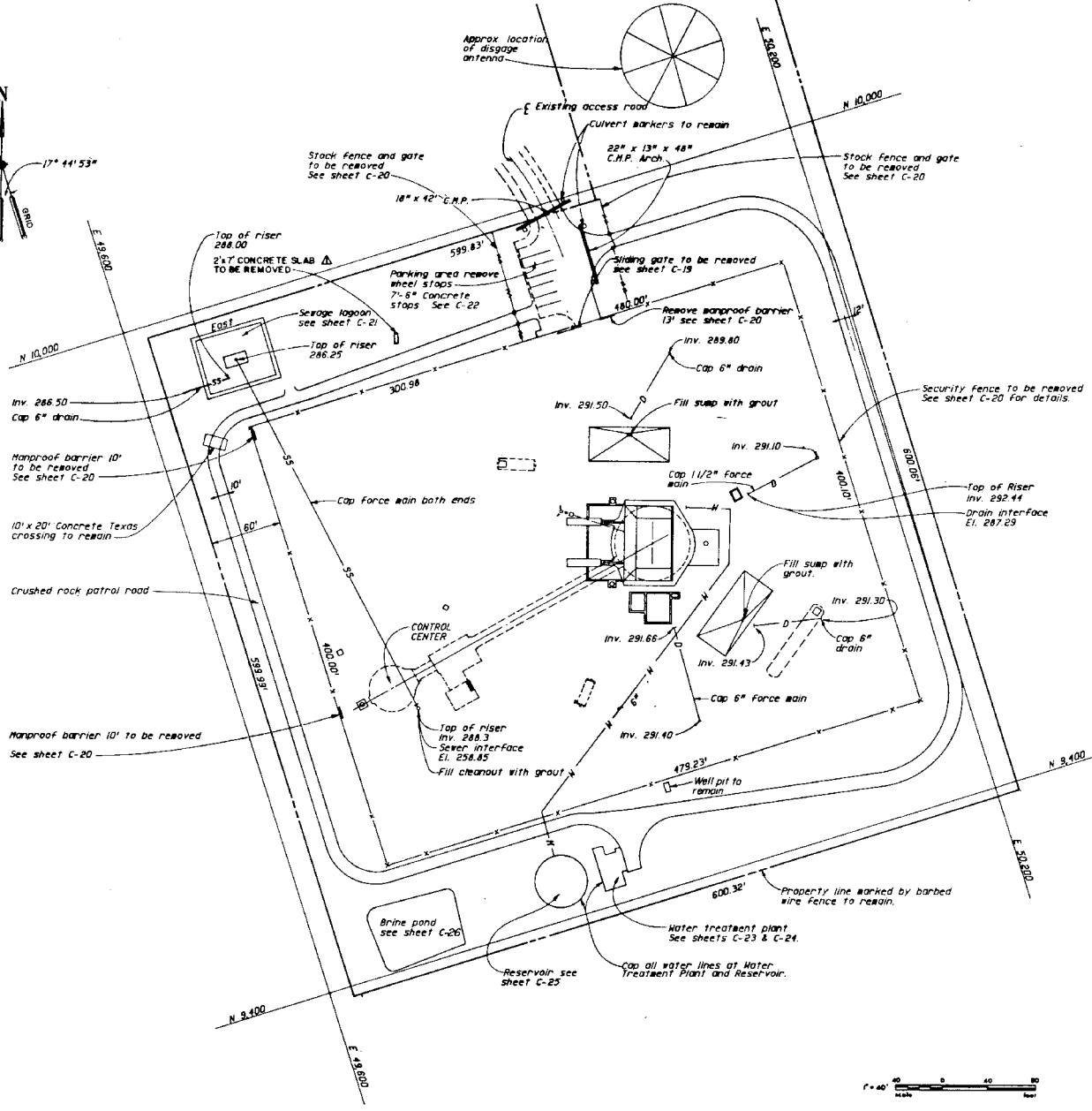
\$\$ — THINK VALUE ENGINEERING — \$\$

Revisions			
Symbol	Descriptions	Date	Approved
AM*POOD GENERAL REVISIONS DESIGNED BY U.S. ARMY ENGINEER DISTRICT U.S. ARMY ENGINEER DISTRICT CORPS OF ENGINEERS CORPS OF ENGINEERS OMAHA, NEBRASKA LITTLE ROCK, ARKANSAS			
Designed by: G.M.R.	LITTLE ROCK AFB ARKANSAS		
Drawn by: H.G.M.	TITAN II DISMANTLEMENT		
Checked by: J.W.E.	SITE 373-3, HEBER SPRINGS		
Reviewed by: J.C.B.	REMOVAL PLAN		
Submitted by: J.C.B.	Scale: As Shown	Sheet reference number: C-4	Date: MARCH 1986
Chief:	Spec. No.: DACA 93-34-C-2001	Correct No.:	Drawing Code:
	Section: DACA 93-34-C-2007		AF212-90-01





Note: 1. Site has been converted to commercial water. Water valve is located along Access Road near property line.



\$\$ — THINK VALUE ENGINEERING — \$\$			
Revisions			
Symbol	Descriptions	Date	Approved
AM 000 GENERAL REVISIONS			
DESIGNED BY U.S. ARMY ENGINEER DISTRICT CORPS OF ENGINEERS OMAHA, NEBRASKA		U.S. ARMY ENGINEER DISTRICT CORPS OF ENGINEERS LITTLE ROCK, ARKANSAS	
Designed by: G.M.R. LITTLE ROCK AFB ARKANSAS			
Drawn by: H.G.M. TITAN II DISMANTLEMENT			
SITE 373-4, ALBION REMOVAL PLAN			
Checked by: J.W.E.	Scale: As Shown	Sheet reference number: C-5	Date: MARCH 1986
Reviewed by: J.C.S.	Spec. No.: DACA 88-88-2-221	Drawing Code:	
Submitted by:	Contract No.:		
Chief:	Section DACA 88-88-C-2007		

5

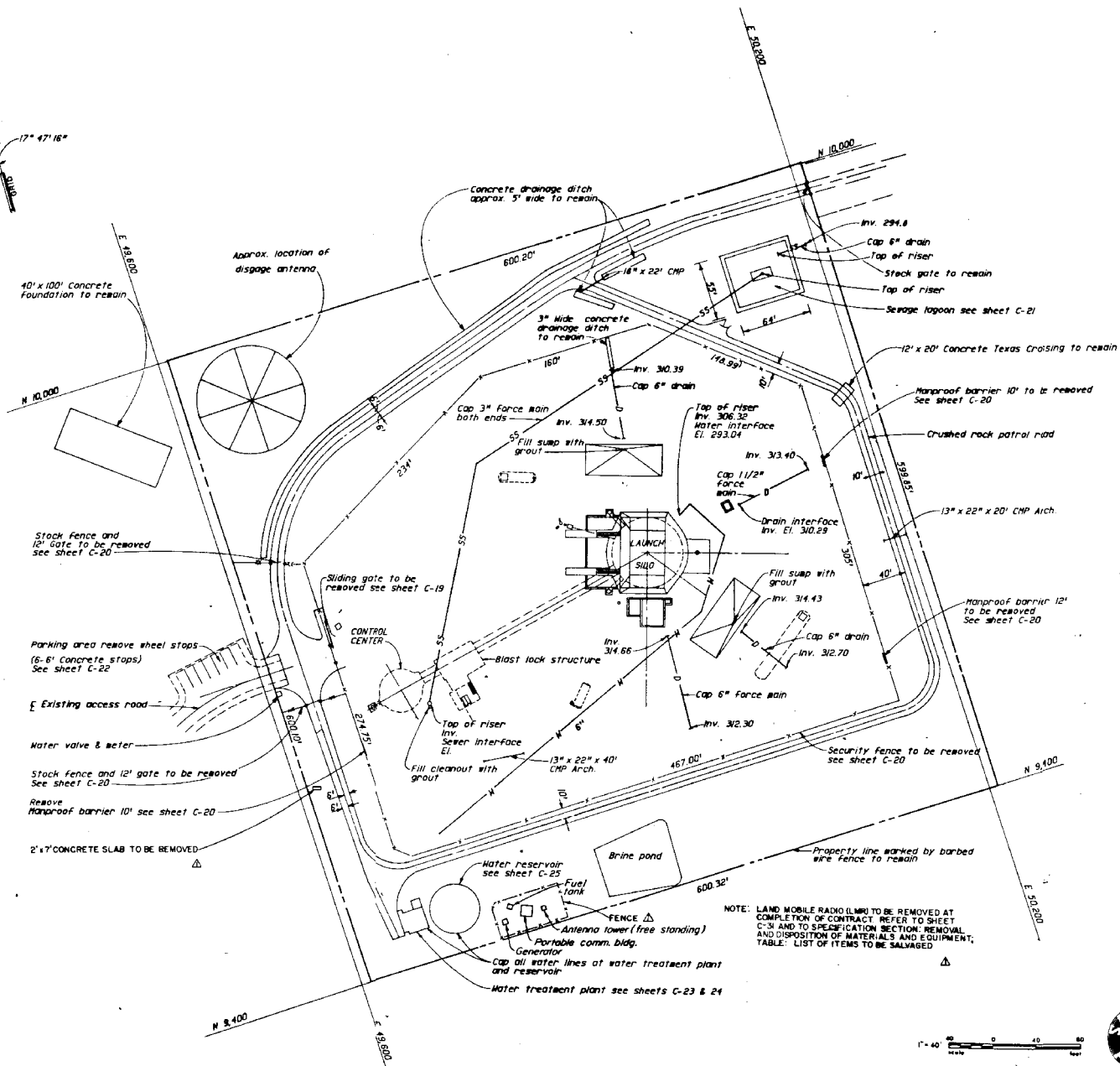
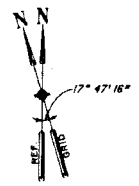
4

3

2

1

Note: Site has commercial water supply water valve is located along Access Road near property line.



40' x 100' Concrete Foundation to remain

Approx. location of disage antenna

Concrete drainage ditch approx. 5' wide to remain

3' wide concrete drainage ditch to remain

Inv. 294.8
Cap 6" drain
Top of riser
Stock gate to remain
Top of riser
Sewage Tappan see sheet C-21

12' x 20' Concrete Texas Crossing to remain

Manproof barrier 10' to be removed See sheet C-20

Crushed rock patrol road

13" x 22" x 20' CMP Arch

Manproof barrier 12' to be removed See sheet C-20

Security fence to be removed see sheet C-20

Property line marked by barbed wire fence to remain

Stock fence and 12' gate to be removed see sheet C-20

Parking area remove wheel stops (6-6' concrete stops) See sheet C-22

Existing access road

Stock fence and 12' gate to be removed See sheet C-20

Remove Manproof barrier 10' see sheet C-20

2' x 7' CONCRETE SLAB TO BE REMOVED

Sliding gate to be removed see sheet C-19

Blast lock structure

Top of riser Inv. Sewer interface El.

Fill cleanout with grout

Water reservoir see sheet C-25

Brine pond

Fence

Antenna tower (free standing)

Portable comm. bldg.

Generator

Cap all water lines at water treatment plant and reservoir

Water treatment plant see sheets C-23 & 24

NOTE: LAND MOBILE RADIO (LMR) TO BE REMOVED AT COMPLETION OF CONTRACT. REFER TO SHEET C-31 AND TO SPECIFICATION SECTION: REMOVAL AND DISPOSITION OF MATERIALS AND EQUIPMENT; TABLE: LIST OF ITEMS TO BE SALVAGED



\$\$ — THINK VALUE ENGINEERING — \$\$			
Revisions			
Symbol	Descriptions	Date	Approved
AM GOOD GENERAL REVISIONS			
DESIGNED BY U.S. ARMY ENGINEER DISTRICT CORPS OF ENGINEERS OMAHA, NEBRASKA		U.S. ARMY ENGINEER DISTRICT CORPS OF ENGINEERS LITTLE ROCK, ARKANSAS	
DESIGNED BY G.M.R.		LITTLE ROCK AFB TITAN II DISMANTLEMENT	
DRAWN BY H.G.M.		SITE 373-7, VELVET RIDGE REMOVAL PLAN	
CHECKED BY J.W.E.		Scale: As Shown Sheet reference number: MARCH 1999 Drawing Code	
REVISIONS BY J.C.S.		Spec No.: Contract No.: Section: DATA 28-28-C-0007	
SUBMITTED BY J.C.S.		C-8 AF212-90-01	

D

D

C

C

B

B

A

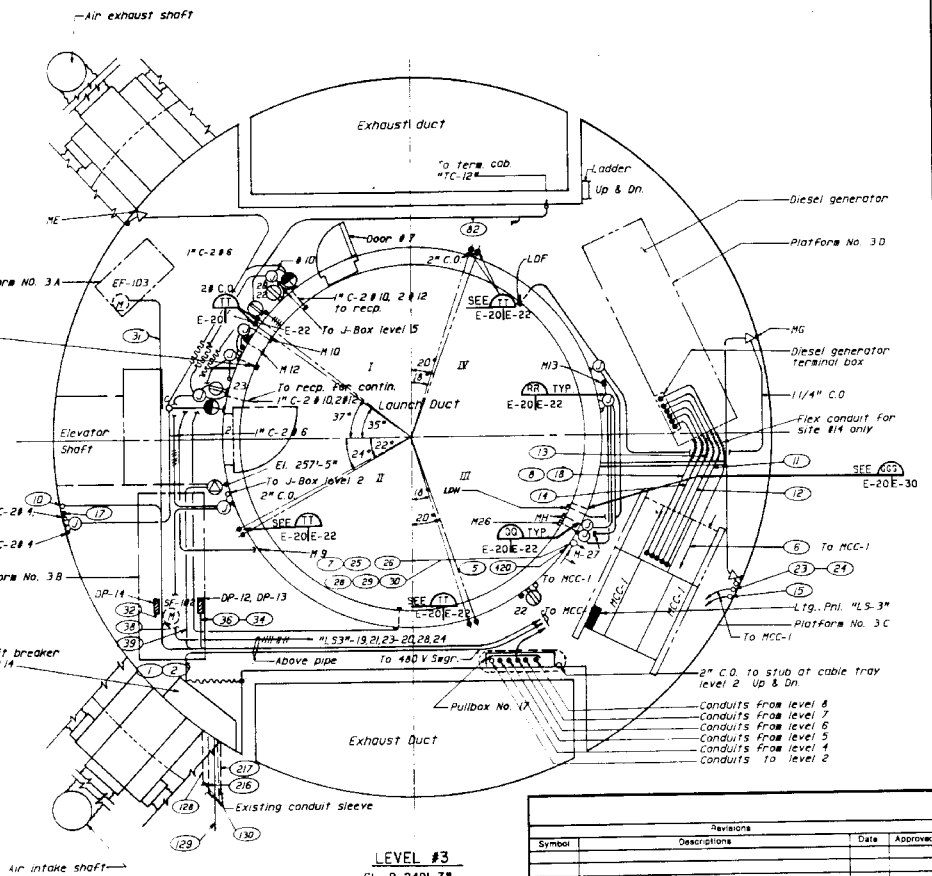
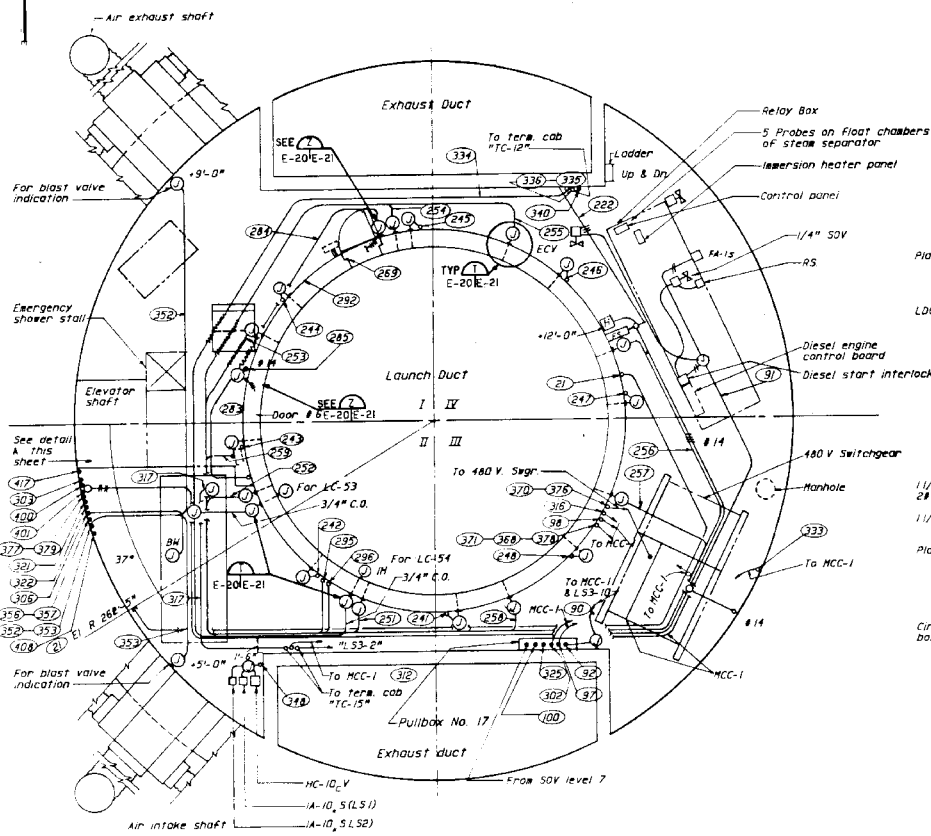
A

5

4

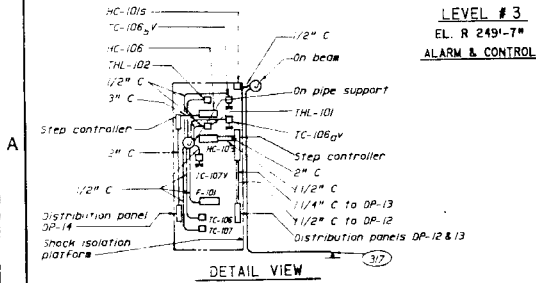
3

2



LEVEL #3
 EL. R 249'-7"
POWER & COMMUNICATION

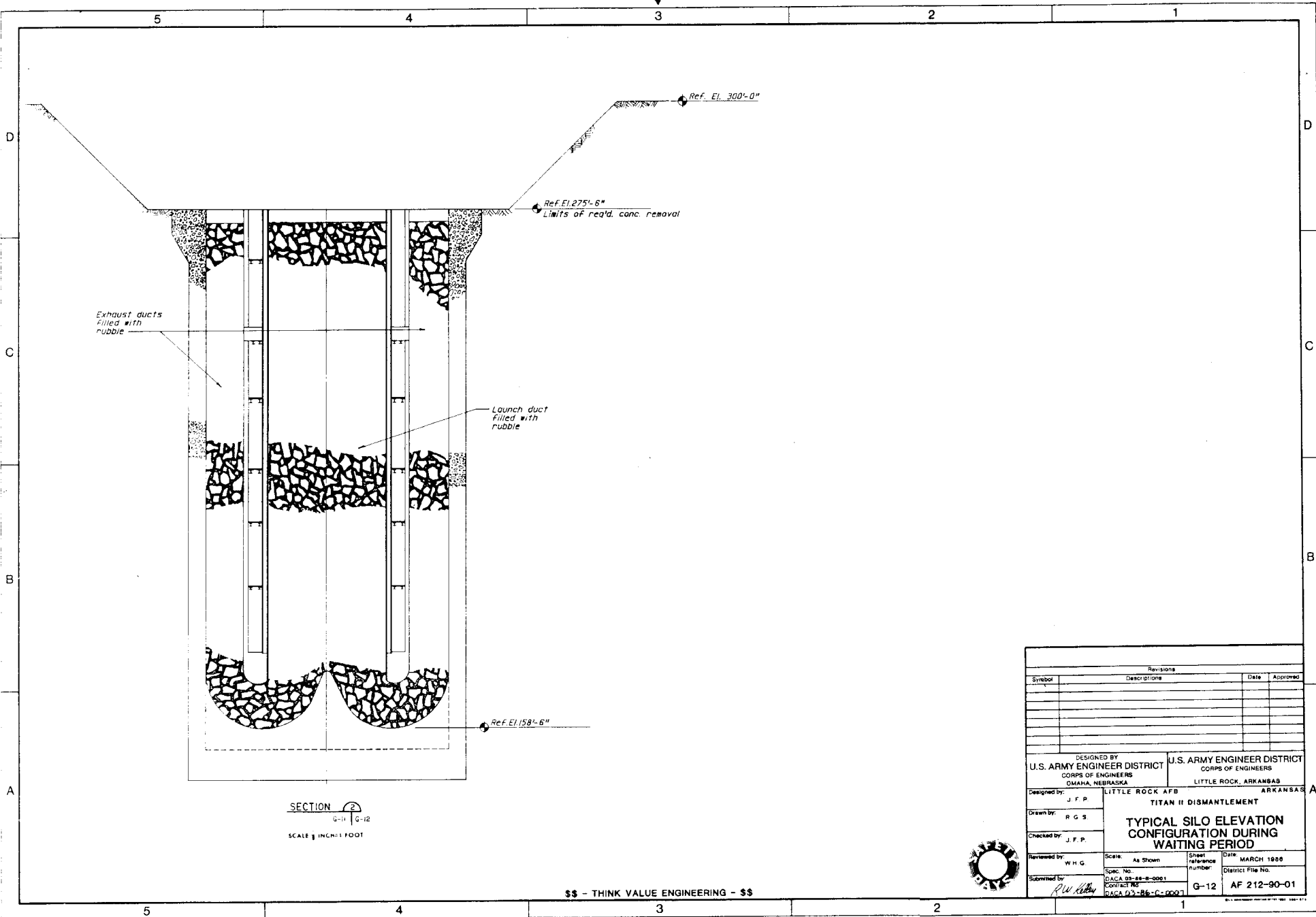
SCALE 1/2 INCH = 1 FOOT



Revisions			
Symbol	Descriptions	Date	Approved

DESIGNED BY U.S. ARMY ENGINEER DISTRICT CORPS OF ENGINEERS OMAHA, NEBRASKA	U.S. ARMY ENGINEER DISTRICT CORPS OF ENGINEERS LITTLE ROCK, ARKANSAS
Designed by: R. J. B.	TITAN II DISMANTLEMENT
Drawn by: C. H. N.	
Checked by: D. E. W.	
Reviewed by: J. M. H.	
Submitted by: <i>R. W. [Signature]</i>	

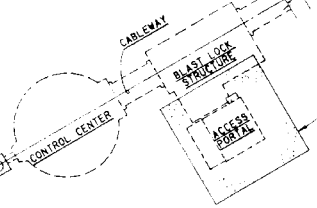
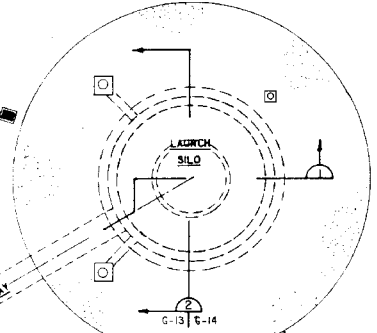
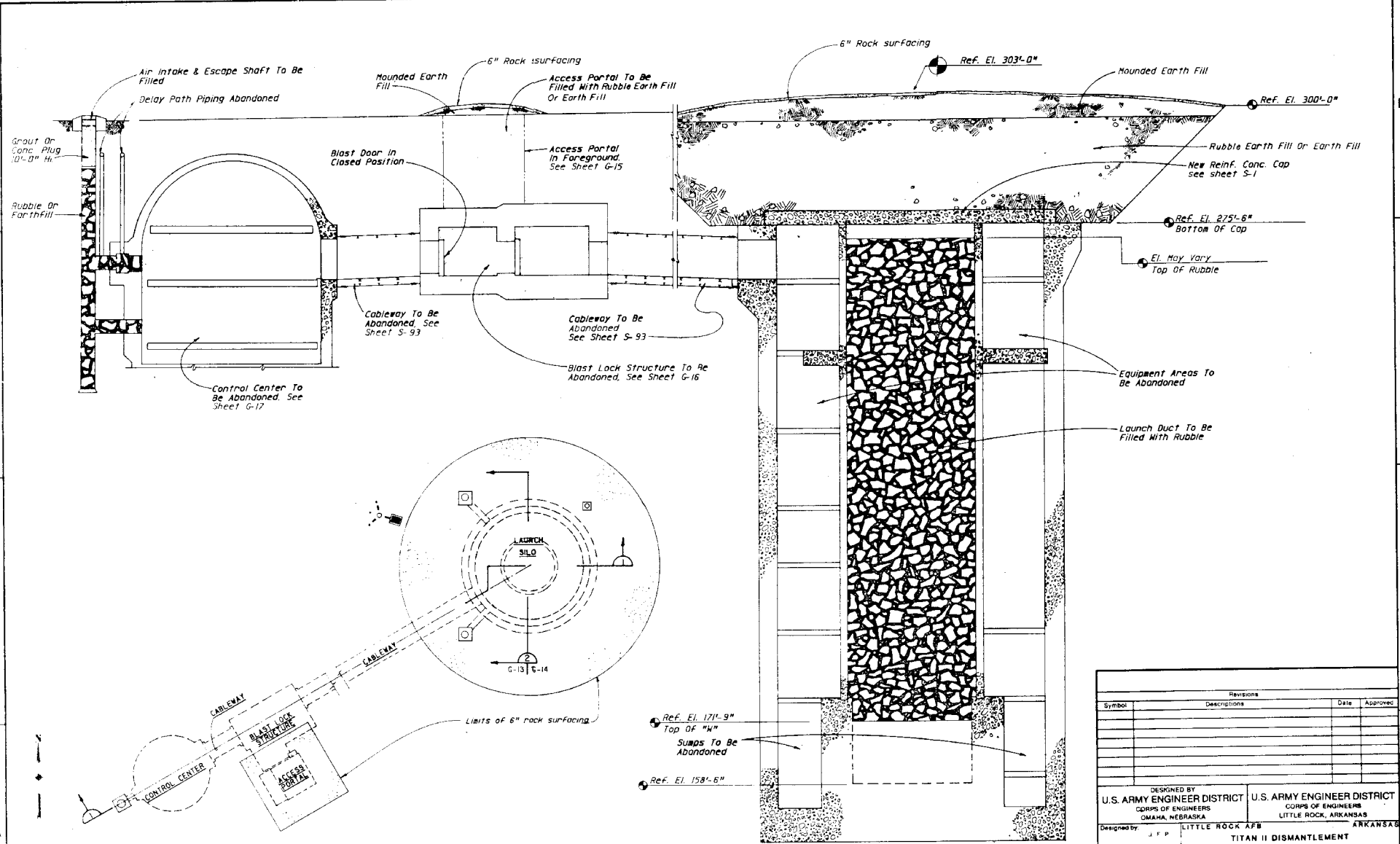
Scale: As Shown	Sheet reference number: 0418	Date: MARCH 1988
Spec. No.: DAC-A-93-88-0001	Contract No.: DACW42-88-C-0001	District File No.:
E-20 AF 212-90-01		



SECTION 2
G-11 | G-12
SCALE 3/4" = 1 FOOT

Revisions			
Symbol	Descriptions	Date	Approved

DESIGNED BY U.S. ARMY ENGINEER DISTRICT CORPS OF ENGINEERS OMAHA, NEBRASKA		U.S. ARMY ENGINEER DISTRICT CORPS OF ENGINEERS LITTLE ROCK, ARKANSAS	
Designed by:	J. F. P.	LITTLE ROCK AFB ARKANSAS	
Drawn by:	R. G. S.	TITAN II DISMANTLEMENT	
Checked by:	J. F. P.	TYPICAL SILO ELEVATION CONFIGURATION DURING WAITING PERIOD	
Reviewed by:	W. H. G.	Scale: As Shown	Sheet reference number: G-12
Submitted by:	R. W. Kelly	Spec. No. DACA 03-88-8-0001	Date: MARCH 1988
		CONTRACTING: DACA 03-88-C-0007	District File No. AF 212-90-01



KEY PLAN
SCALE: 1/4 INCH = 30 FEET

SECTION 1
SCALE: 1/4 INCH = 1 FOOT

Revisions			
Symbol	Descriptions	Date	Approved

DESIGNED BY
U.S. ARMY ENGINEER DISTRICT
CORPS OF ENGINEERS
OMAHA, NEBRASKA

U.S. ARMY ENGINEER DISTRICT
CORPS OF ENGINEERS
LITTLE ROCK, ARKANSAS

Designed by: J.F.P. LITTLE ROCK AFB ARKANSAS
TITAN II DISMANTLEMENT

Drawn by: C.H.N.
Checked by: W.H.G.
Reviewed by: W.H.G. Scale: As Shown Sheet reference number: Date: MARCH 1988

TYPICAL PLAN & ELEVATION DISMANTLED CONFIGURATION

Spec. No. District File No. Date: MARCH 1988
DACA 03-26-8-0001 G-13 AF 212-90-01

Submitted by: *R.W. Kelly* CONTRACT NO. DATE: 03-26-8-0001



5

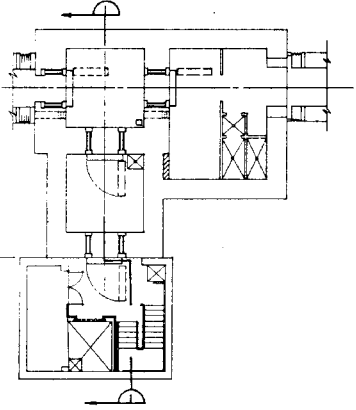
4

3

2

1

ACCESS PORTAL
BLAST LOCK STRUCTURE



KEY PLAN

Ref. El. 298'-6"

Ref. El. 295'-6"
Max height of rubble

6" Rock surfacing

See Sheet C-26
For grading details

Suitable earth fill

Rubble earth fill or
earth fill

Steel blast lock door to be
welded shut
See sheet G-16

Ref. El. 265'-4"

Ref. El. 261'-4"

ACCESS PORTAL

BLAST LOCK STRUCTURE

SECTION 1

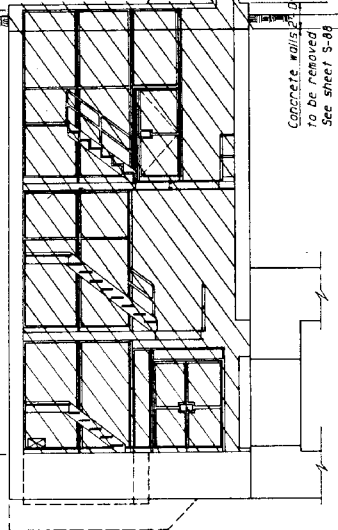
33 - THINK VALUE ENGINEERING - 33

Access portal roof
to be removed
See sheet S-88

Gravity roof
ventilator
to be removed
See sheet S-88

Expanded metal partitions, steel
stairs, railings & platforms to be removed
See sheets S-89 thru S-92

Concrete walls
to be removed
See sheet S-88



SECTION 1
SCALE 1/2 INCH = 1 FOOT

Steel blast
door
in closed
position
See sheet G-16

To be abandoned

Revisions			
Symbol	Description	Date	Approved

DESIGNED BY U.S. ARMY ENGINEER DISTRICT CORPS OF ENGINEERS OMAHA, NEBRASKA		U.S. ARMY ENGINEER DISTRICT CORPS OF ENGINEERS LITTLE ROCK, ARKANSAS	
Designed by: J. F. P.	LITTLE ROCK AFB ARKANSAS	TITAN II DISMANTLEMENT	
Drawn by: R. G. S.	ACCESS PORTAL & BLAST LOCK STRUCTURE - DISMANTLED CONFIGURATION		
Checked by: J. F. P.	Scale: As Shown	Sheet reference number:	Date: MARCH 1960
Reviewed by: W. H. G.	Spec. No. DACA 88-88-2-0001	Contract No. DACA 88-88-2-0007	District File No.
Submitted by: <i>R.W. Kelly</i>	G-15	AF 212-90-01	



D

D

C

C

B

B

A

A

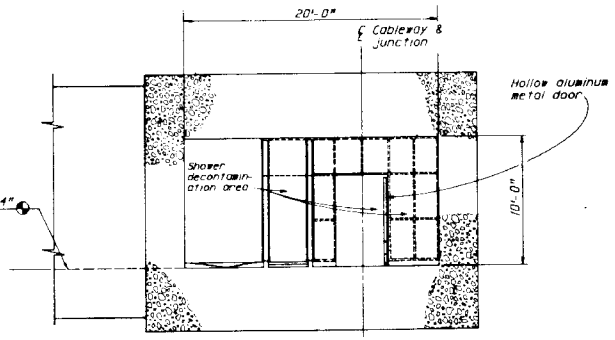
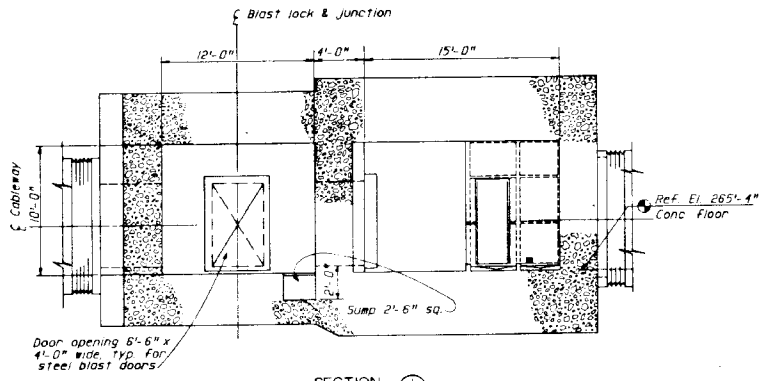
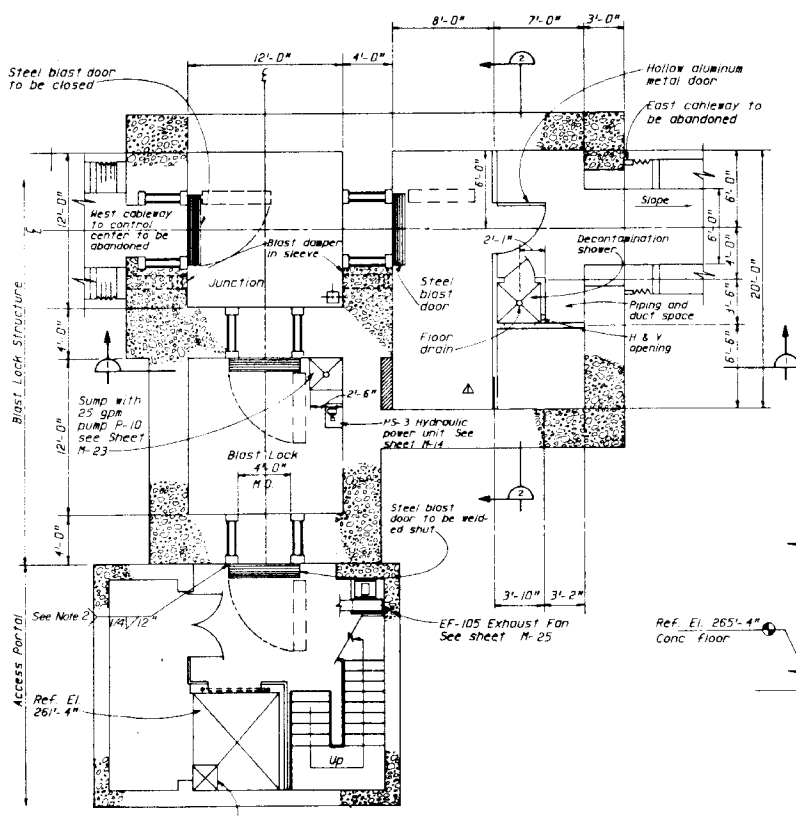
5

4

3

2

1

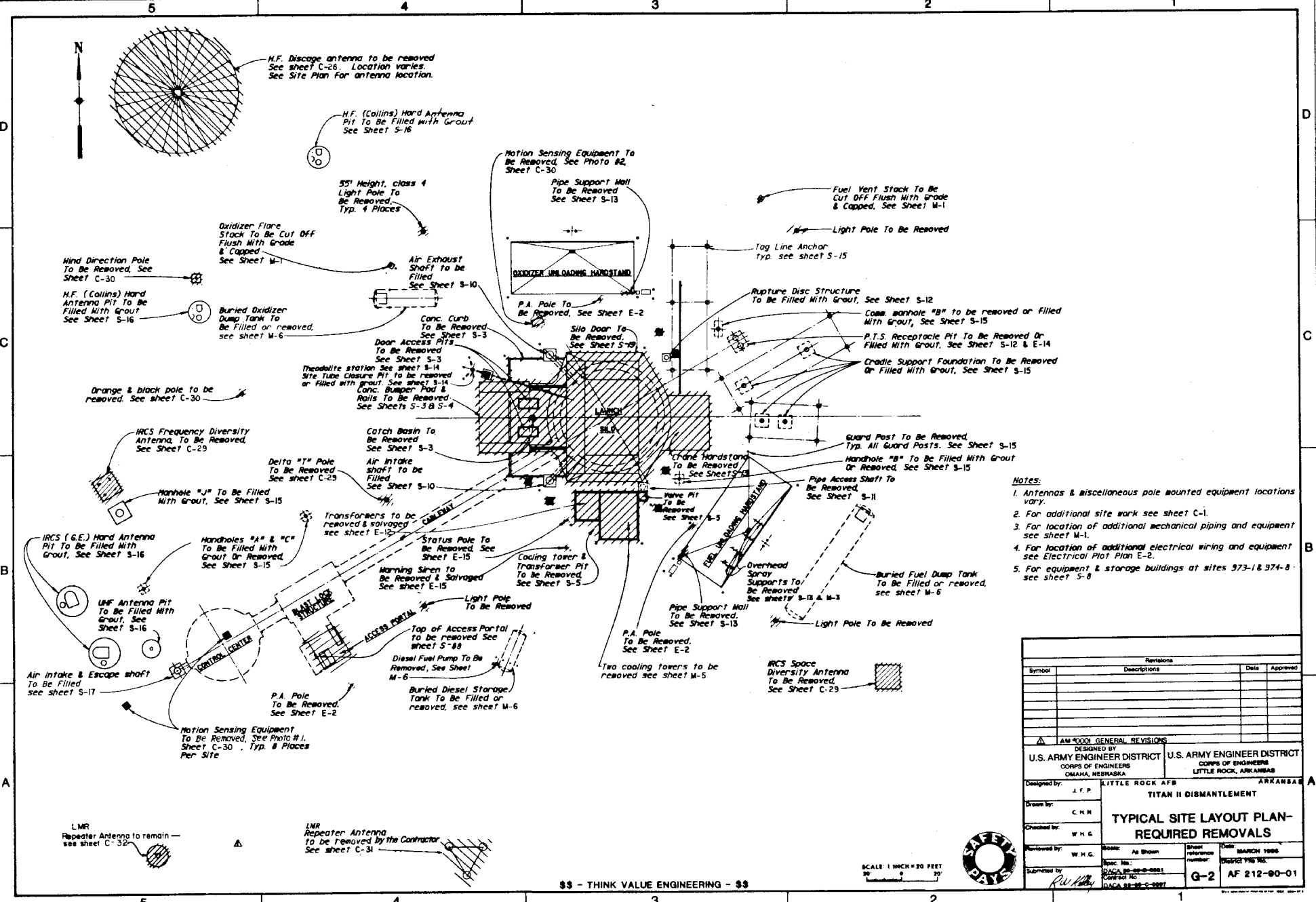


- Notes:
- Blast lock structure to be abandoned
 - Fillet weld to be centered on vertical edge of steel blast door.

SCALE 1/4" INCH = 1 FOOT



Revisions			
Symbol	Descriptions	Date	Approved
AMSCOOL GENERAL REVISIONS			
DESIGNED BY U.S. ARMY ENGINEER DISTRICT CORPS OF ENGINEERS OMAHA, NEBRASKA		U.S. ARMY ENGINEER DISTRICT CORPS OF ENGINEERS LITTLE ROCK, ARKANSAS	
Designed by	J. F. P.	LITTLE ROCK AFB ARKANSAS	
Drawn by	R. G. S.	TITAN II DISMANTLEMENT ACCESS PORTAL & BLAST LOCK STRUCTURE PLAN AND SECTIONS	
Checked by	J. F. P.	Reviewed by	W. H. C.
Submitted by	R. W. Kelly	Scale	As Shown
		Spec. No.	DAQA 212-90-001
		Contract No.	DAQA 21-21-C-007
		Sheet reference number	G-18
		DATE	MARCH 1988
		Drawing Code	AF 212-90-01



H.F. Discage antenna to be removed
See sheet C-28. Location varies.
See Site Plan for antenna location.

H.F. (Collins) Hard Antenna
Pit To Be Filled with Grout
See Sheet S-16

55' Height, class 4
Light Pole To
Be Removed,
Typ. 4 Places

Oxidizer Flame
Stack To Be Cut Off
Flush With Grade
& Capped
See Sheet M-1

Wind Direction Pole
To Be Removed, See
Sheet C-30

H.F. (Collins) Hard
Antenna Pit To Be
Filled With Grout
See Sheet S-16

Buried Oxidizer
Dump Tank To
Be Filled or removed,
see sheet M-6

Orange & black pole to be
removed. See sheet C-30

IRCS Frequency Diversity
Antenna, To Be Removed,
See Sheet C-29

Delta "7" Pole
To Be Removed
See sheet C-29

Handhole "J" To Be Filled
With Grout, See Sheet S-15

Transformers to be
removed & salvaged
see sheet E-15

IRCS (G.E.) Hard Antenna
Pit To Be Filled With
Grout, See Sheet S-16

Handholes "A" & "C"
To Be Filled With
Grout Or Removed,
See Sheet S-15

UHF Antenna Pit
To Be Filled With
Grout, See
Sheet S-16

Air Intake & Escape shaft
To Be Filled
see sheet S-17

Motion Sensing Equipment
To Be Removed, See Photo #1,
Sheet C-30. Typ. 8 Places
Per Site

LMR
Repeater Antenna to remain -
see sheet C-32

LMR
Repeater Antenna
to be Removed by the Contractor
See sheet C-31

Motion Sensing Equipment To
Be Removed, See Photo #2,
Sheet C-30

Pipe Support Wall
To Be Removed
See Sheet S-13

Fuel Vent Stack To Be
Cut Off, Flush With Grade
& Capped, See Sheet M-1

Light Pole To Be Removed

Tag Line Anchor
Typ. see sheet S-15

Air Exhaust
Shaft To be
Filled
See Sheet S-10

Conc. Curb
To Be Removed
See Sheet S-3

Door Access Pits
To Be Removed
See Sheet S-3

Theodolite station See sheet S-14
Site Tube Closure Pit To be removed
or filled with grout. See sheet S-14
Conc. Bumper Pad &
Rails To Be Removed
See Sheets S-3 & S-4

Catch Basin To
Be Removed
See Sheet S-3

Air Intake
shaft To be
Filled
See Sheet S-10

Handhole "B" To Be Filled
With Grout, See Sheet S-15

Status Pole To
Be Removed See
Sheet E-15

Manning Siren to
Be Removed & Salvaged
See sheet E-15

Light Pole
To Be Removed

Top of Access Portal
To be removed See
sheet S-88

Diesel Fuel Pump To Be
Removed, See Sheet
M-6

Buried Diesel Storage
Tank To Be Filled or
removed, see sheet M-6

Cooling tower &
Transformer Pit
To Be Removed
See Sheet S-5

Two cooling towers to be
removed see sheet M-5

P.A. Pole
To Be Removed,
See Sheet E-2

Pipe Support Wall
To Be Removed
See Sheet S-13

IRCS Space
Diversity Antenna
To Be Removed
See Sheet C-29

Oxidizer Unloading Handstand

P.A. Pole To
Be Removed, See Sheet E-2

Silo Door To
Be Removed,
See Sheet S-9

Chane Handstand
To Be Removed/
See Sheet S-5

Handhole "B" To Be Filled
With Grout, See Sheet S-15

Guard Post To Be Removed,
Typ. All Guard Posts. See Sheet S-15

Handhole "B" To Be Filled
With Grout
Or Removed, See Sheet S-15

Pipe Access Shaft To
Be Removed,
See Sheet S-11

Handhole "B" To Be Filled
With Grout
Or Removed, See Sheet S-15

Overhead
Spray
Supports To
Be Removed
See sheets S-13 & M-3

Buried Fuel Dump Tank
To Be Filled or removed,
see sheet M-6

Light Pole To Be Removed

Pipe Support Wall
To Be Removed
See Sheet S-13

P.A. Pole
To Be Removed,
See Sheet E-2

IRCS Space
Diversity Antenna
To Be Removed
See Sheet C-29

Rupture Disc Structure
To Be Filled With Grout, See Sheet S-12

Comm. Manhole "B" To Be removed or filled
With Grout, See Sheet S-15

P.T.S. Receptacle Pit To Be Removed Or
Filled With Grout, See Sheet S-12 & E-14

Cradle Support Foundation To Be Removed
Or Filled With Grout, See Sheet S-15

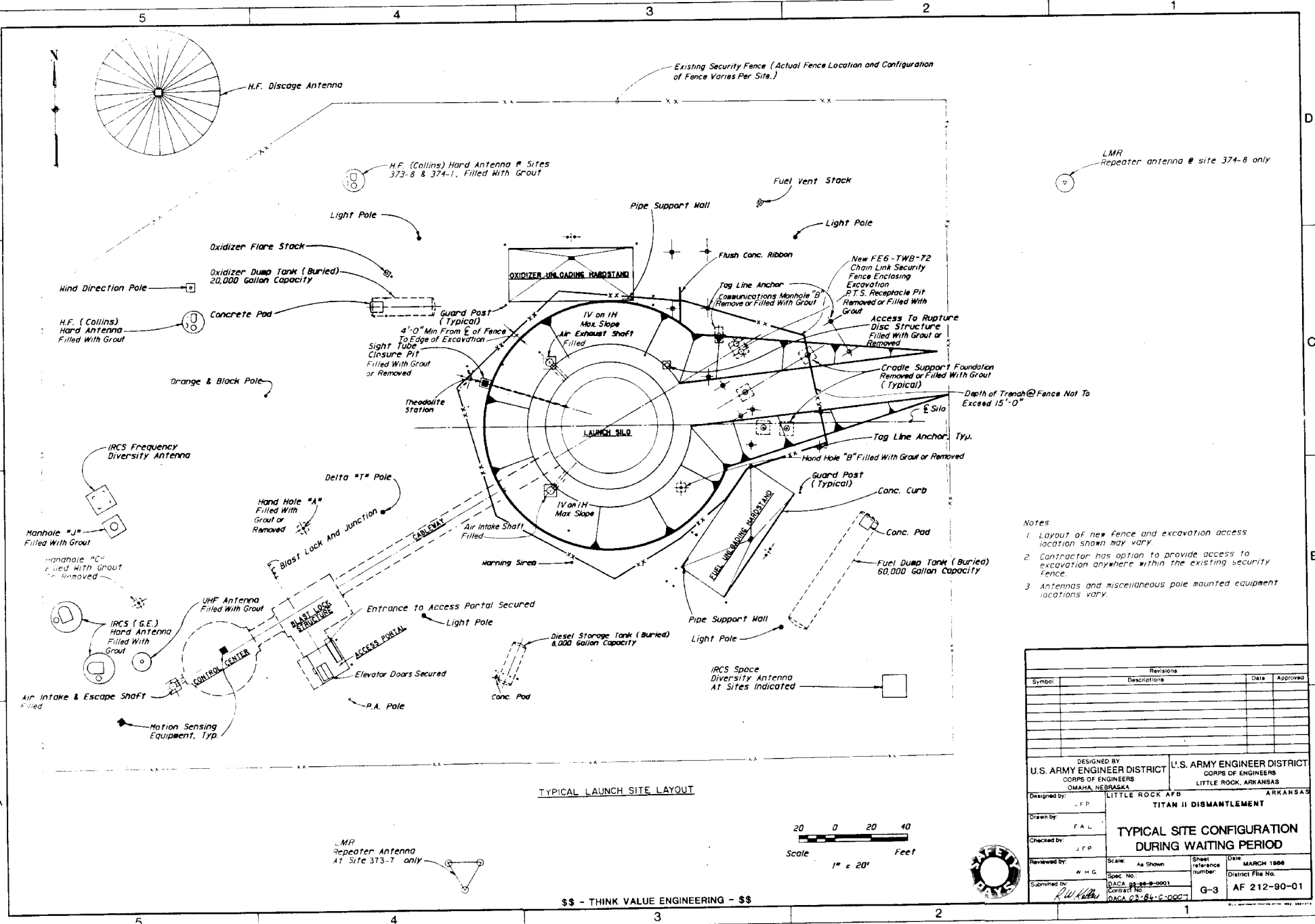
NOTES:

1. Antennas & miscellaneous pole mounted equipment locations vary.
2. For additional site work see sheet C-1.
3. For location of additional mechanical piping and equipment see sheet M-1.
4. For location of additional electrical wiring and equipment see Electrical Plot Plan E-2.
5. For equipment & storage buildings at sites 373-1 & 374-8 see sheet S-8

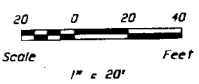
Revisions			
Symbol	Descriptions	Date	Approved
▲ I AM 4000 GENERAL REVISIONS			
DESIGNED BY J. E. F.		U.S. ARMY ENGINEER DISTRICT CORPS OF ENGINEERS OMAHA, NEBRASKA	
DRAWN BY C. H. N.		U.S. ARMY ENGINEER DISTRICT CORPS OF ENGINEERS LITTLE ROCK, ARKANSAS	
LITTLE ROCK AFB ARKANSAS			
TITAN II DISMANTLEMENT			
TYPICAL SITE LAYOUT PLAN - REQUIRED REMOVALS			
CHECKED BY W. H. G.	SCALE: As Shown	SHEET NUMBER G-2	DATE MARCH 1988
APPROVED BY W. H. G.	PROJECT NO. DACA 88-00-0001	DISTRICT FILE NO. DACA 88-00-0001	AF 212-00-01



SCALE 1 INCH = 30 FEET



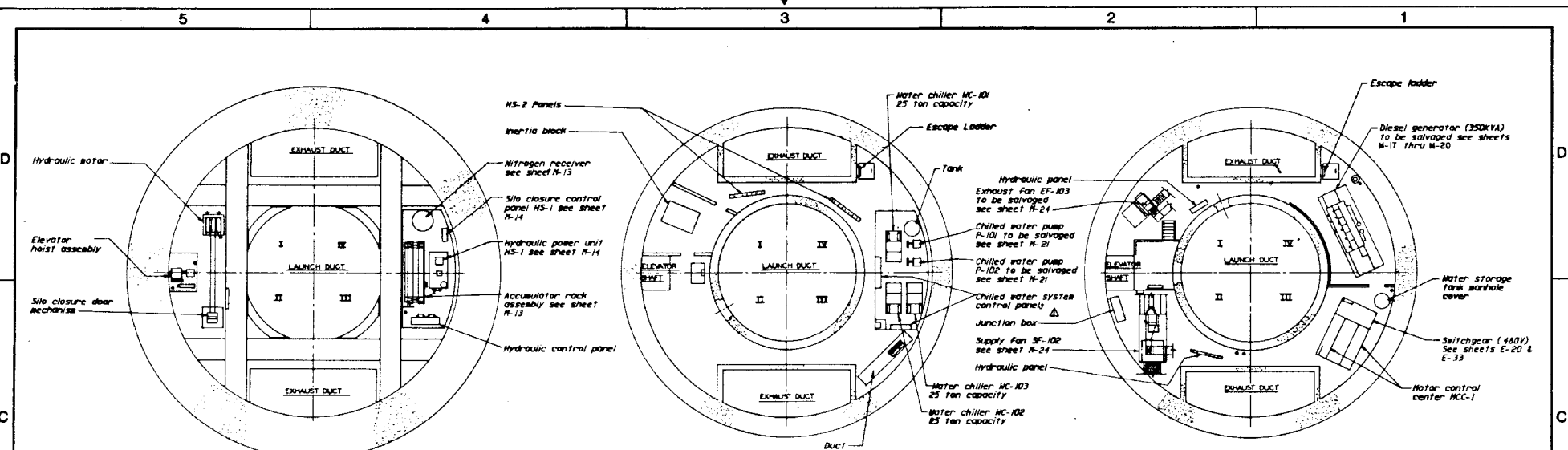
TYPICAL LAUNCH SITE LAYOUT



- Notes:
1. Layout of new fence and excavation access location shown may vary.
 2. Contractor has option to provide access to excavation anywhere within the existing security fence.
 3. Antennas and miscellaneous pole mounted equipment locations vary.

Revisions			
Symbol	Descriptions	Date	Approved

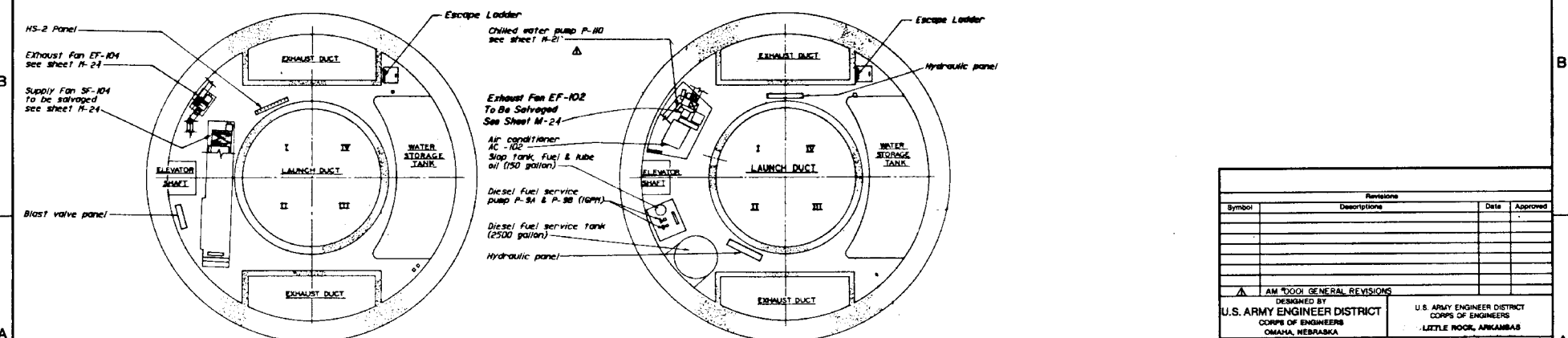
DESIGNED BY U.S. ARMY ENGINEER DISTRICT CORPS OF ENGINEERS OMAHA, NEBRASKA	U.S. ARMY ENGINEER DISTRICT CORPS OF ENGINEERS LITTLE ROCK, ARKANSAS
Designed by: JFP	LITTLE ROCK AFB ARKANSAS
Drawn by: FAL	TITAN II DISMANTLEMENT
Checked by: JFP	TYPICAL SITE CONFIGURATION DURING WAITING PERIOD
Reviewed by: M.H.G.	Scale: As Shown
Submitted by: R.W. Miller	Sheet reference number: G-3
Spec No: DACG 93-86-0001	DATE: MARCH 1988
Contract No: DACG 93-86-C-0027	District File No: AF 212-90-01



SILO EQUIPMENT AREA - LEVEL 1
REF. EL. 278'-0"

SILO EQUIPMENT AREA - LEVEL 2
REF. EL. 264'-0"

SILO EQUIPMENT AREA - LEVEL 3
REF. EL. 249'-0"



SILO EQUIPMENT AREA - LEVEL 4
REF. EL. 233'-4"

SILO EQUIPMENT AREA - LEVEL 5
REF. EL. 217'-4"

Revisions			
Symbol	Descriptions	Date	Approved
▲ AM TROOP GENERAL REVISIONS			
DESIGNED BY U.S. ARMY ENGINEER DISTRICT CORPS OF ENGINEERS OMAHA, NEBRASKA		U.S. ARMY ENGINEER DISTRICT CORPS OF ENGINEERS LITTLE ROCK, ARKANSAS	
Designed by:	J.F.P.	LITTLE ROCK AFB	ARKANSAS
Drawn by:	R.C.S.	TITAN II DISMANTLEMENT	
Checked by:	J.F.P.	SILO EQUIPMENT LOCATIONS LEVELS 1 THRU 5	
Reviewed by:	W.H.G.	Scale: As Shown	Sheet reference number: G-6
Submitted by:	R.W.M.	Spec. No. DACG 88-28-D-0001	Date: MARCH 1988
		Contract No. DACG 88-28-D-0001	Drawing Code: AF 212-90-01



5

4

3

2

1

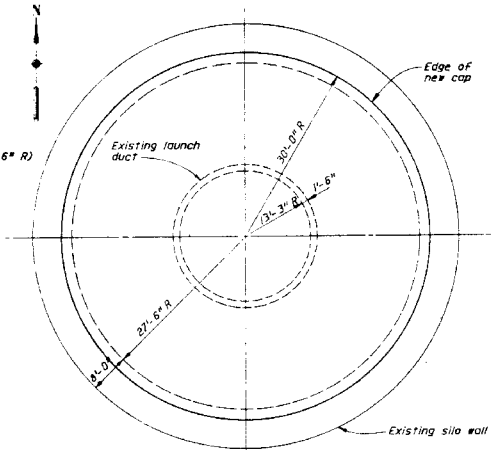
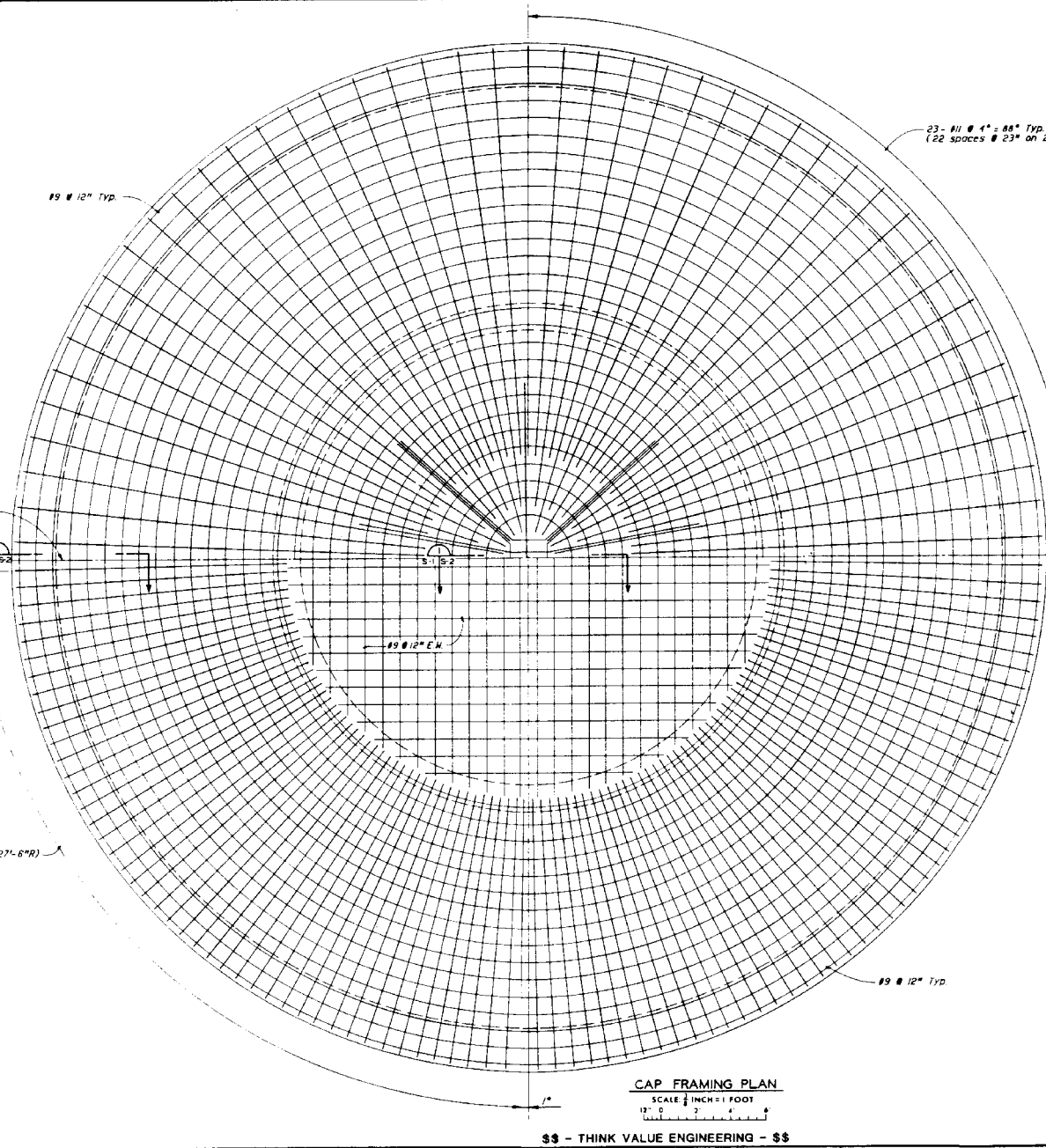
5

4

3

2

1



CAP KEY PLAN
SCALE 1/4" = 1 FOOT

DESIGNER'S NOTES:

1. THE VERTICAL LOAD ON THE CAP WAS ASSUMED TO BE SOIL AND RUBBLE HAVING A UNIT WEIGHT OF 130 PSF.
2. REINFORCED CONCRETE HAS BEEN DESIGNED IN ACCORDANCE WITH ACI STANDARD 318-77 USING A REINFORCING YIELD STRENGTH $F_y = 60,000$ PSI AND CONCRETE COMPRESSIVE STRENGTH $f'_c = 5,000$ PSI.

Revisions			
Symbol	Descriptions	Date	Approved

DESIGNED BY
U.S. ARMY ENGINEER DISTRICT
CORPS OF ENGINEERS
OMAHA, NEBRASKA

U.S. ARMY ENGINEER DISTRICT
CORPS OF ENGINEERS
LITTLE ROCK, ARKANSAS

Designed by: J.F.P. LITTLE ROCK AFB ARKANSAS

Drawn by: L.M.S.

Checked by: W.H.G.

Reviewed by: J.L.S.

Scale: As Shown Sheet reference number: S-1 Date: MARCH 1988

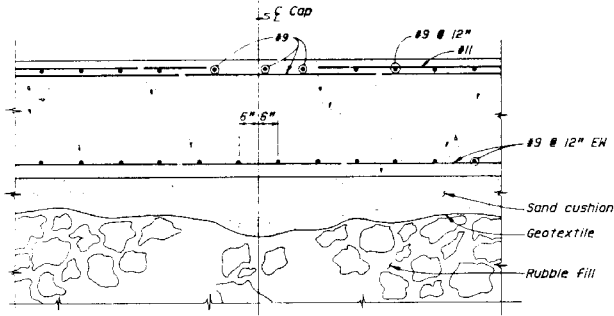
Submitted by: R.W. Kelly District File No.: AF 212-90-01

CONTRACT NO. DACA 27-86-C-0001

CAP FRAMING PLAN
SCALE 1/4" = 1 FOOT

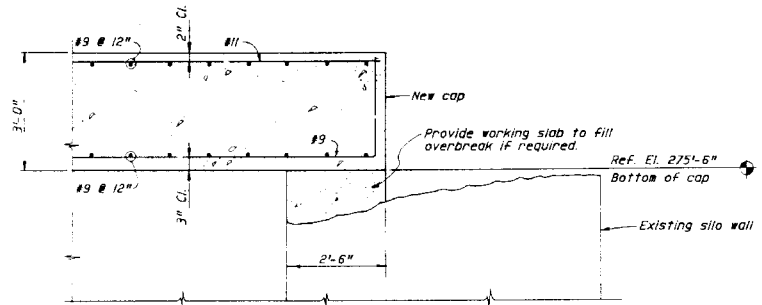
\$\$ - THINK VALUE ENGINEERING - \$\$



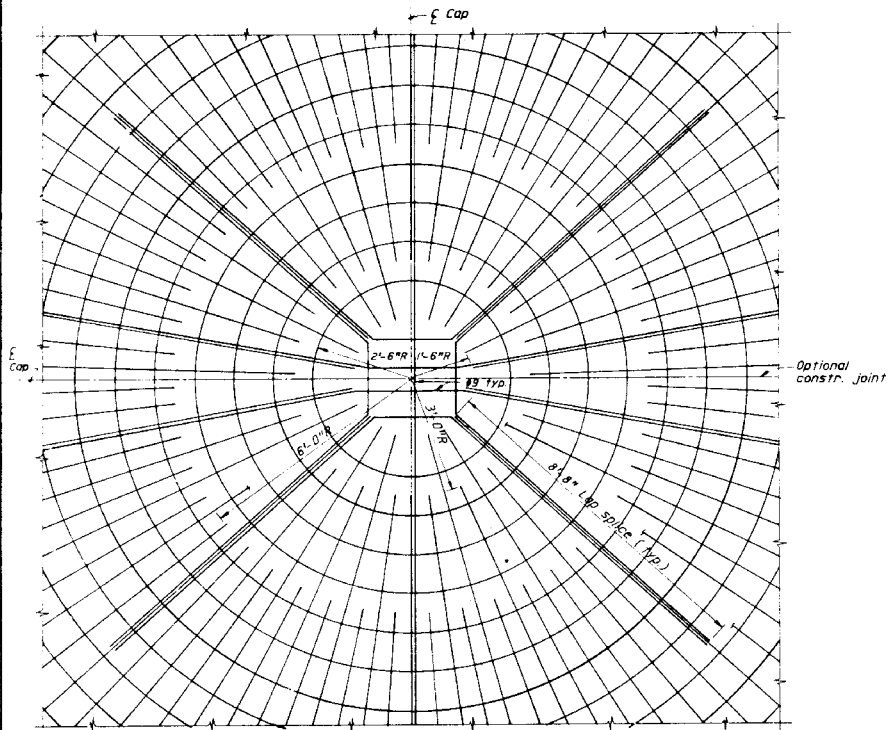


SECTION 1
SCALE: 1/2 INCH = 1 FOOT

See construction note #3 this sheet



SECTION 2
SCALE: 1/2 INCH = 1 FOOT



PARTIAL FRAMING PLAN
TOP BARS
SCALE: 1/2 INCH = 1 FOOT

CONSTRUCTION NOTES:

1. ALL BARS WITH RADIUS BENDS SHALL BE PREFABRICATED. SUCH BARS SHALL NOT BE STRAIGHT BARS SPUN TO FIT THE INDICATED RADIUS.
2. THE NUMBER AND LOCATION OF LAP SPLICES FOR BARS WITH RADIUS BENDS SHALL BE DETERMINED BY THE CONTRACTOR. THE LENGTH OF SUCH LAP SPLICES SHALL NOT BE LESS THAN 75 INCHES FOR BOTTOM BARS NOR 17 1/2 INCHES FOR TOP BARS.
3. THE CONCRETE CAP SHALL BE SUPPORTED BY FIXED FORMS EXCEPT THAT IN AREAS WHERE CONCRETE IS PLACED ABOVE RUBBLE FILL FIXED FORMS MAY BE REPLACED WITH A SAND CUSHION AND GEOTEXTILE AT THE OPTION OF THE CONTRACTOR.

Revisions			
Symbol	Descriptions	Date	Approved

DESIGNED BY U.S. ARMY ENGINEER DISTRICT CORPS OF ENGINEERS OMAHA, NEBRASKA		U.S. ARMY ENGINEER DISTRICT CORPS OF ENGINEERS LITTLE ROCK, ARKANSAS	
Designed by: J.F.P.		LITTLE ROCK AFB ARKANSAS	
Drawn by: L.M.S.		TITAN II DISMANTLEMENT	
Checked by: W.H.G.		NEW CONCRETE CAP PARTIAL PLAN & SECTIONS	
Reviewed by: J.L.S.	Scale: As Shown	Sheet reference number: S-2	Date: MARCH 1988
Submitted by: <i>R.W. Kelly</i>	SPIC No. DALCA 88-0001	District File No. AF 212-90-01	
	CONTROL NO. DACAD2 26 C 0002		

SCALE: 1/2 INCH = 1 FOOT



