

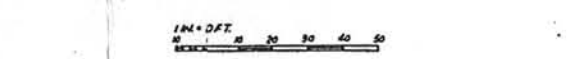
PLOT PLAN
SCALE: 1" = 20'

SYMBOL LIST	
●	NEW POLE
○	EXISTING POLE
—	DOWN GUY
—	DOUBLE INCHOR
—	OVERHEAD TRANSMISSION LINE. ARROW DENOTES DEAD END OF LINE
—	UNDERGROUND CONDUIT OR DUCT BANK RUN
—	BURIED GROUND CABLE
—	POLE MOUND, LOAD BREAK FUSED DISCONNECT
⊕	LIGHTNING ARRESTER
⊕	BOOR. CIRCUIT BREAKER, MOLD CASE. TRIP RATING AS INDICATED
(M)	3 PHASE SCIRREL CAGE INDUCTION MOTOR
ISA	FUSE, RATING AS INDICATED
⊕	PUSHBUTTON, UNIVERSAL CONTACTS. LEGEND PLATE AS INDICATED
—	RELAY, CONTACTS OR SOLENOID VALVE OPERATING COIL
—	NORMALLY OPEN CONTACT
—	NORMALLY CLOSED CONTACT
RUN	INDICATING WIRE, RED COLOR, LEGEND PLATE AS INDICATED
⊕	TYPE "T" COULLET
⊕	JUNCTION BOX, SIZE AS SHOWN ON DWG.
	INDICATES EXISTING WIRE TO BE RELOCATED AS SHOWN
⊕	GROUND ROD, 3/4" x 10'-0", COPPERWELD

ABBREVIATIONS	
L.O.	LOCK-OUT
T.O.	TIME DELAY OPENING
T.C.	TIME DELAY CLOSING
C.R.	CONTROL RELAY
S.V.	SOLENOID OPERATED VALVE
B.O.S.	BOTTOM OF STEEL (NOMINAL)

GENERAL NOTES
1. ALL CONDUIT PERTURBING CONCRETE FIDS SHALL BE INSTALLED WITH CONDUIT COUPLING FLUSH WITH TOP OF FID.

DRAWING NO.	TITLE
3199-5-E-9	WIRING DIAGRAMS & DETAILS - CO ₂ DETECTOR SYSTEM
3199-5-M-6	SILLO IPING SECTIONS
3199-5-M-8	PUMPING STA. PIPING PLAN & SECTIONS
3199-5-M-2	SITE LOCATION & PIPING PLAN AT GRADE
3199-5-E-8	POLE LINE DETAILS
3199-5-E-7	TERMINAL POLE DETAILS
3199-5-E-6	SINGLE LINE, SCHEMATIC & WIRING DIAGRAMS
3199-5-E-5	PLAN, LEVATIONS & SECTIONS - 500 KVA. SUBSTATION
3199-5-E-4	PARTIAL FLOOR PLANS - SILLO LEVELS 1, 2 & 7
3199-5-E-3	PLANS, SECTIONS & DETAILS - L.C.C. & SILLO
3199-5-E-2	CONDUIT LAYOUT & DETAILS - FIREX PUMP STATION

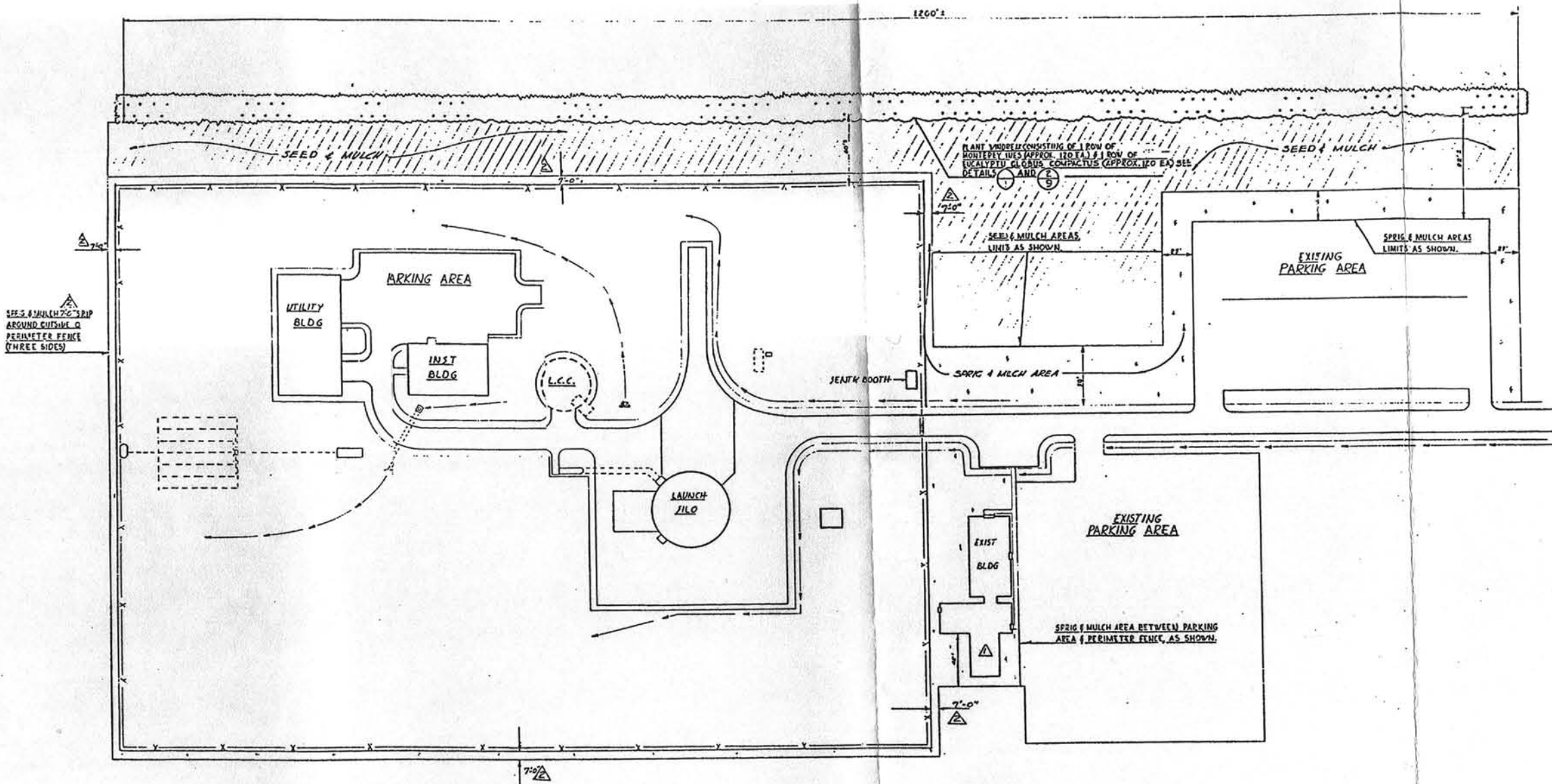


REVISION	DATE	DESCRIPTION	AGENCY	INIT.
1	1-18-64	OPERATIONAL AT-BUILT DWG.		
2	3-21-61	AS BUIL CHANGES: RE-LOCATED SUBSTATION & RE-ROUTED AERIAL FEED & FEED TO MOTOR WATER FOR FIRE PUMP & MOTOR		

RECORD DRAWING - AS BUILT
CONT. No. 6942 REV. A DATE 3/10/61 BY R.C.B.
CONT. No. REV. DATE BY

APPROVED: [Signature]
DATE: 3/10/61

BECHTEL CORPORATION ENGINEERS AND ARCHITECTS 300 FRANCISCO - LOS ANGELES - NEW YORK	DEPARTMENT OF THE AIR FORCE AIR FORCE BALLISTIC MISSILE DIVISION JARDC WALTONVILLE, CALIFORNIA
WS 107 A-1 OSTF (SILLO) VANDENBERG A.F.B. CALIFORNIA LAUNCH COMPLEX FIREX SYSTEM PLOT PLAN, LEGEND & SYMBOLS	
DRAWN BY: [Signature] CHECKED BY: [Signature] DATE: 10 NOV 1960	SPECIFICATION: (NEQ 60-2) SUP. 71C DATE: 10 NOV 1960 SCALE: 1" = 20'-0" DRAWING NO: 3199-5-E-1 REV: 1



SEE SHEET 21 FOR GENERAL NOTES AND LEGEND.

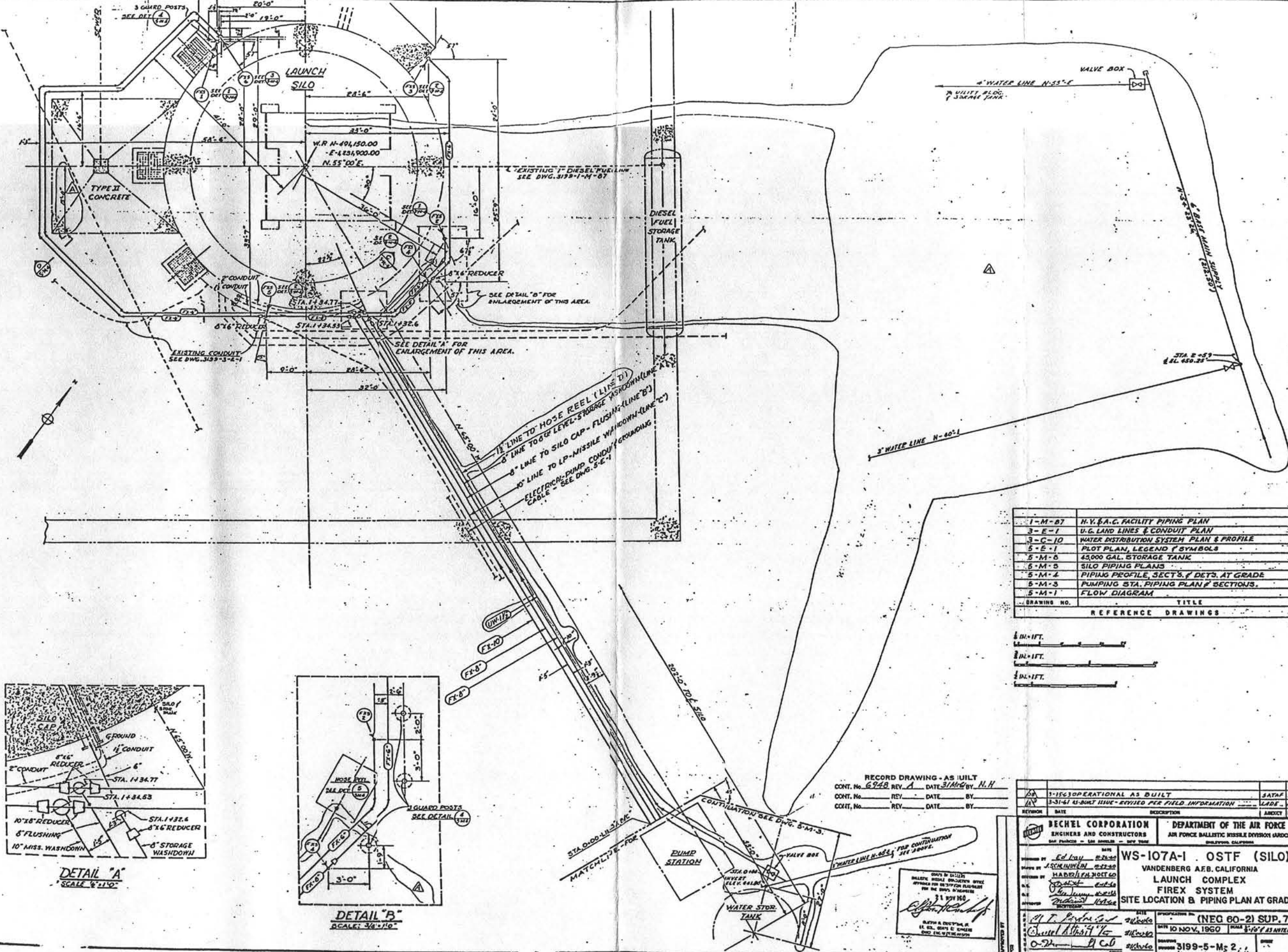
DATE	DESCRIPTION	BY	APP'D
9/10/66	REVISED SPRIGGING LIMITS PERMITS FOR ROAD	LT	KS
	RESEAL ADDRESS EXISTING BUILDING & PARKING AREAS TO BE BUILT	LT	KS

STRATEGIC AIR COMMAND
 VANDENBERG AIR FORCE BASE, CALIFORNIA
REPAIR EROSION & DRAINAGE
MISSILE SITES

65 OSTF # 2
 SPRIGGING, SEEDING & TREE PLANTING

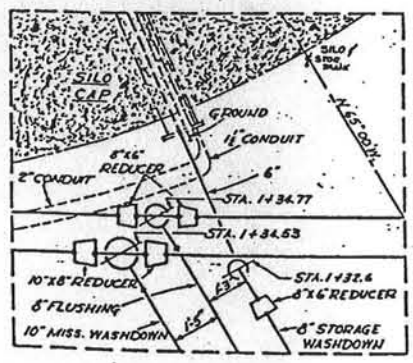
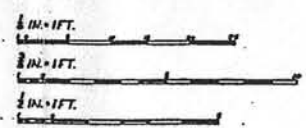
SCALE:	1" = 40'
DATE:	26 AUG 66
DESIGNED BY:	AP
CHECKED BY:	AP
APPROVED BY:	AP
OTHER SPECIAL:	

DATE:	26 AUG 66	BY:	AP
DESIGNED BY:	AP	CHECKED BY:	AP
APPROVED BY:	AP	OTHER SPECIAL:	
DATE:	12-2	BY:	AP

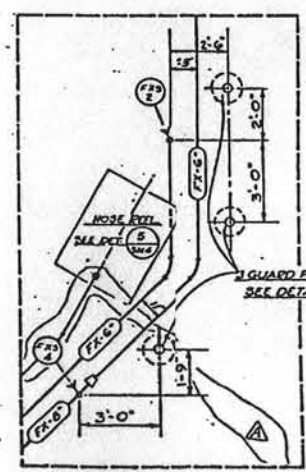


DRAWING NO.	TITLE
1-M-87	H.V.B.A.C. FACILITY PIPING PLAN
3-E-1	U.G. LAND LINES & CONDUIT PLAN
3-C-10	WATER DISTRIBUTION SYSTEM PLAN & PROFILE
5-E-1	PLOT PLAN, LEGEND & SYMBOLS
5-M-6	45000 GAL. STORAGE TANK
5-M-5	SILO PIPING PLANS
5-M-4	PIPING PROFILE, SECT'S. & DETS. AT GRADE
5-M-3	PUMPING STA. PIPING PLAN & SECTIONS
5-M-1	FLOW DIAGRAM

REFERENCE DRAWINGS



DETAIL "A"
SCALE: 1/2" = 1'-0"



DETAIL "B"
SCALE: 3/4" = 1'-0"

RECORD DRAWING - AS BUILT
 CONT. No. 6948 REV. A DATE 3/11/64 BY N.H.
 CONT. No. REV. DATE BY
 CONT. No. REV. DATE BY

DATE	3-15-60 OPERATIONAL AS BUILT	SATAP	NH
DATE	3-31-61 AS-BUILT ISSUE - REVISED PER FIELD INFORMATION	LAIDE	NH
REVISION	DATE	DESCRIPTION	AMENDY
BY	DATE	DESCRIPTION	AMENDY

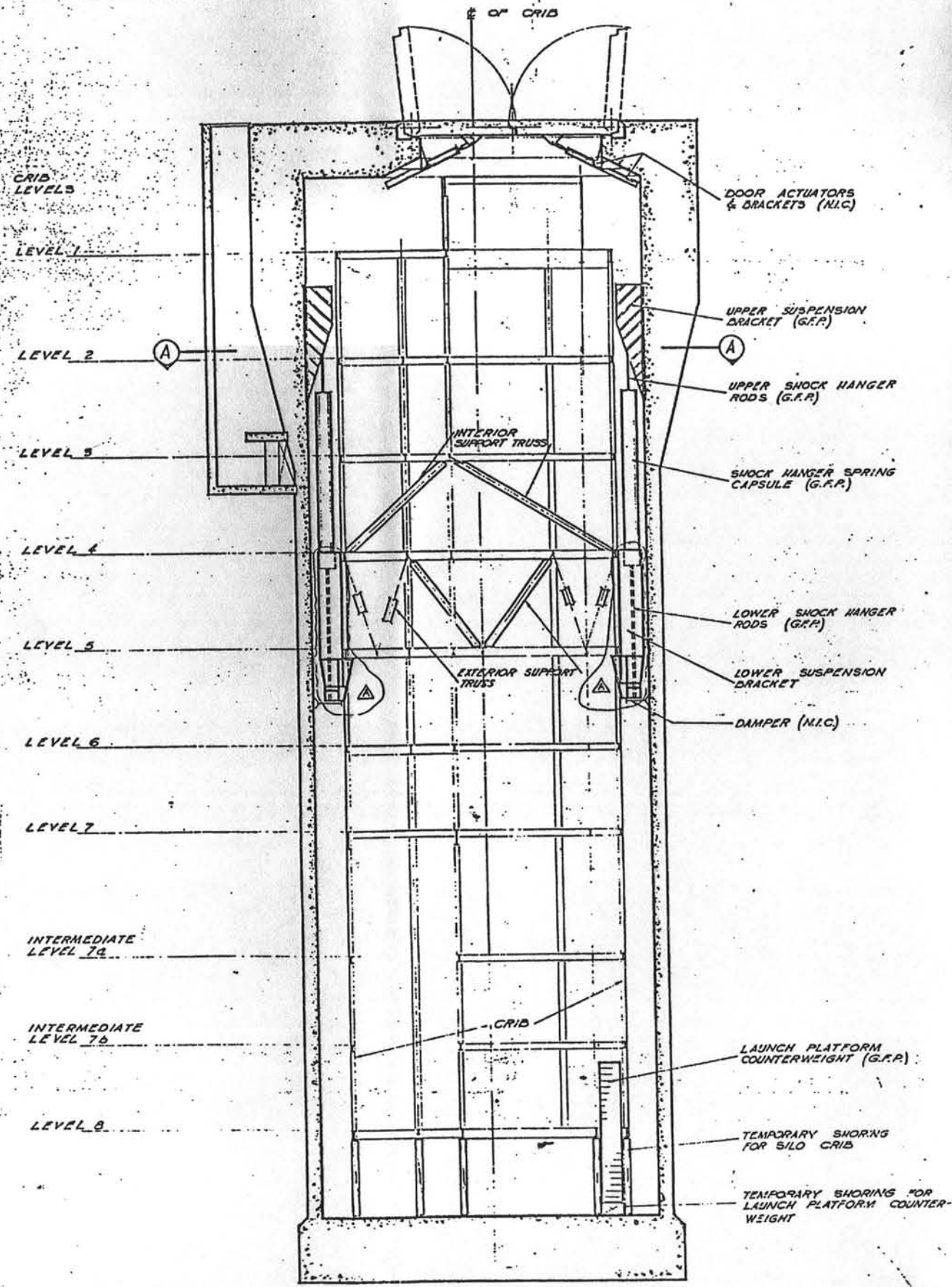
BECHTEL CORPORATION
 ENGINEERS AND CONSTRUCTORS
 SAN FRANCISCO - LOS ANGELES - NEW YORK

DEPARTMENT OF THE AIR FORCE
 AIR FORCE BALLISTIC MISSILE DIVISION GARDEN GROVE, CALIFORNIA

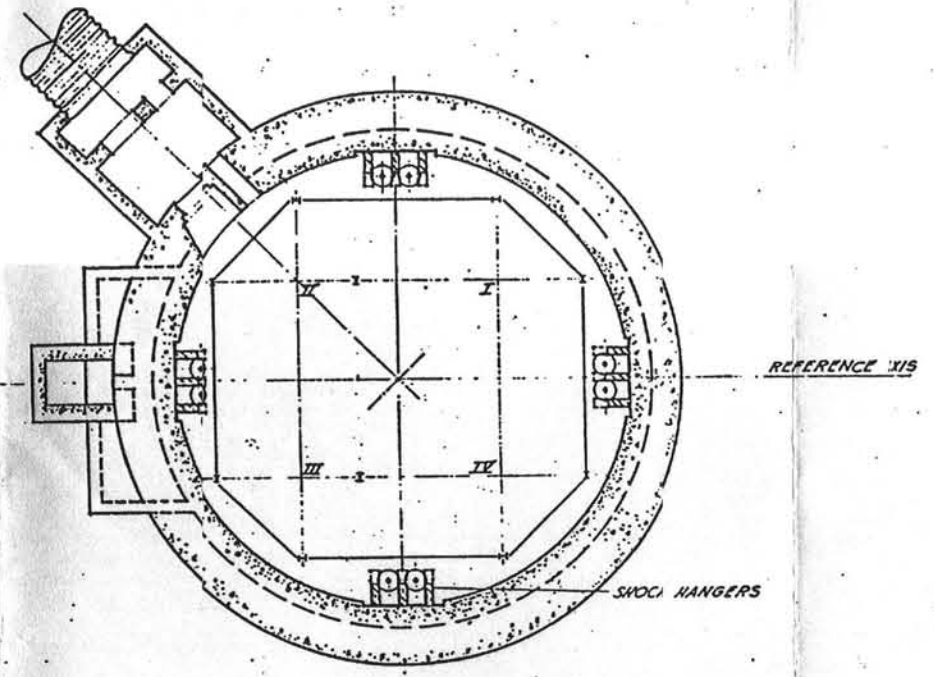
WS-107A-1 OSTF (SILO)
 VANDENBERG AFB, CALIFORNIA
 LAUNCH COMPLEX
 FIREX SYSTEM
 SITE LOCATION & PIPING PLAN AT GRADE

DATE 10 NOV, 1960 SCALE 1/2" = 1'-0" AS SHOWN

3199-5-M-2



ELEVATION THROUGH REFERENCE AXIS



PLAN AT A-A

LEGEND

- 1. (G.F.P.) : GOVERNMENT FURNISHED PROPERTY (INSTALLED BY FACILITY CONTRACTOR)
- 2. (N.I.C.) : NOT IN CONTRACT

GENERAL NOTES

- 1. ITEMS NOT OTHERWISE NOTED ARE FURNISHED AND INSTALLED BY THE FACILITY CONTRACTOR

REV	DATE	DESCRIPTION	BY	CHECKED
1		CHANGED LOWER SUSPENSION BRACKETS		
2		ADDED 1/2" DIA. ANCHORS TO SEE 15-12		
3				
4				
5				
6				
7				
8				
9				
10				
11				
12				
13				
14				
15				
16				
17				
18				
19				
20				
21				
22				
23				
24				
25				
26				
27				
28				
29				
30				
31				
32				
33				
34				
35				
36				
37				
38				
39				
40				
41				
42				
43				
44				
45				
46				
47				
48				
49				
50				
51				
52				
53				
54				
55				
56				
57				
58				
59				
60				
61				
62				
63				
64				
65				
66				
67				
68				
69				
70				
71				
72				
73				
74				
75				
76				
77				
78				
79				
80				
81				
82				
83				
84				
85				
86				
87				
88				
89				
90				
91				
92				
93				
94				
95				
96				
97				
98				
99				
100				

RECHTEL CORPORATION
ENGINEERS AND CONSTRUCTORS
1400 BROADWAY, NEW YORK 17, N.Y.

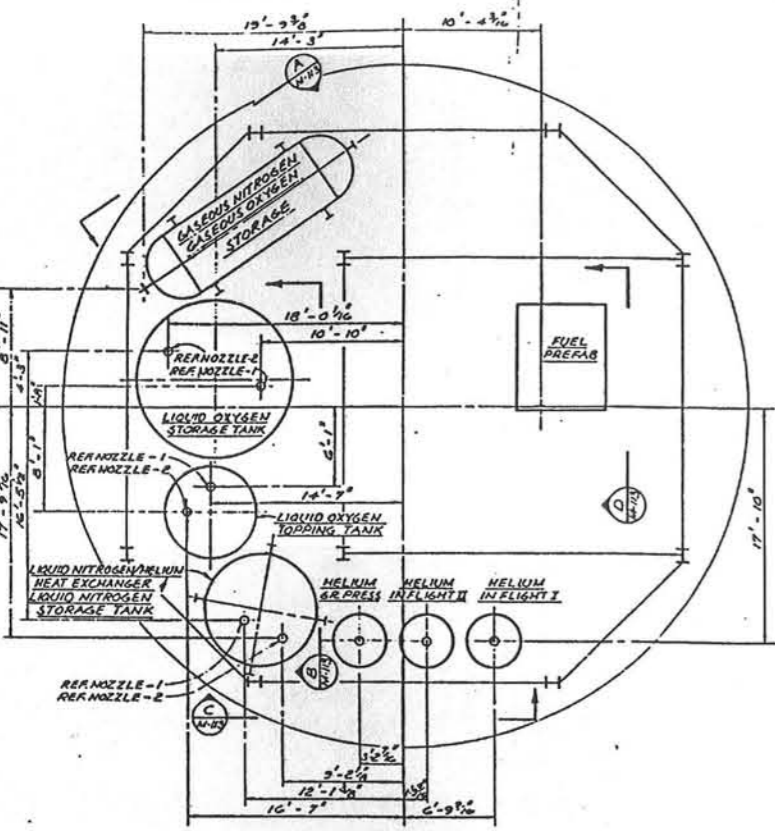
DEPARTMENT OF THE AIR FORCE
AIR FORCE BALLISTIC MISSILE DIVISION WAFB
WALTON, MISSISSIPPI

WS 107 A-1 OPERATIONAL BASE
UNITARY SILO
LAUNCHING SILO
GENERAL ARRANGEMENT
PLAN AND SECTION

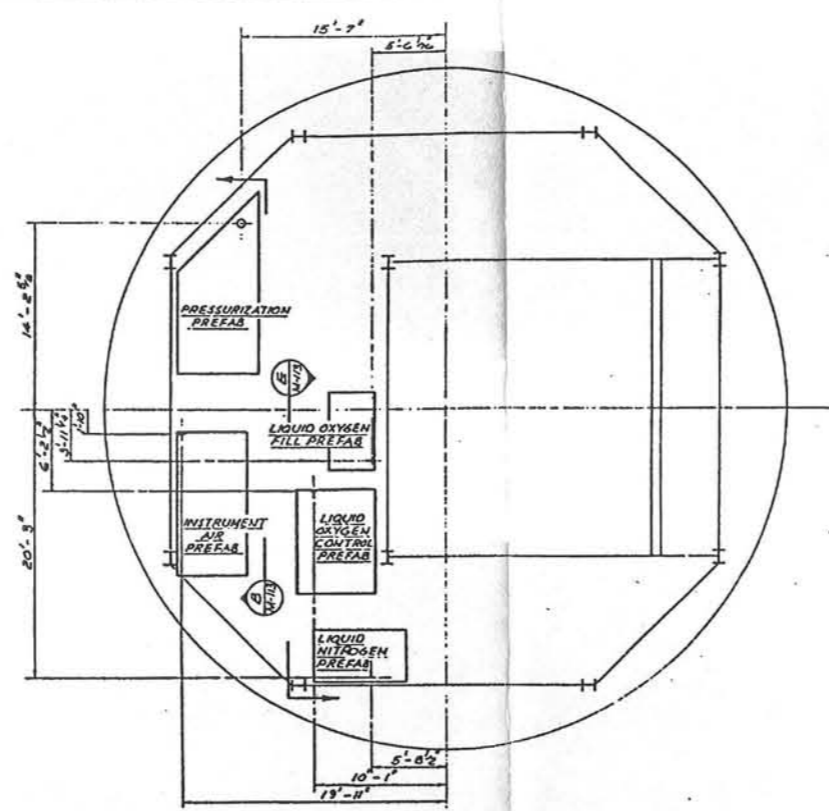
DATE: 1960
SCALE: 1" = 1'-0"

AFBMD-1-A-22

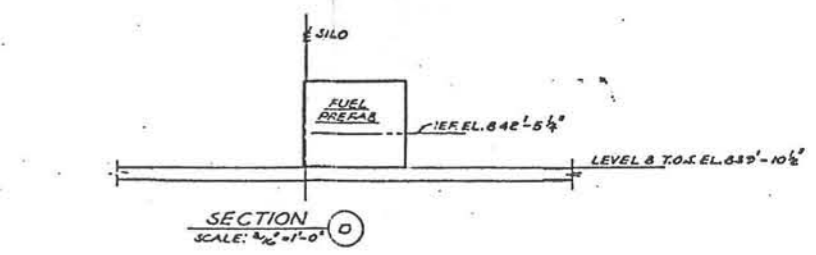
1920, 1935



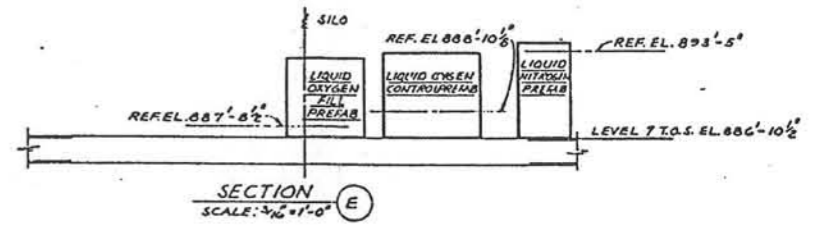
PLAN - LEVEL 8
T.O.S. EL. 839'-10 1/2"
SCALE: 3/16" = 1'-0"



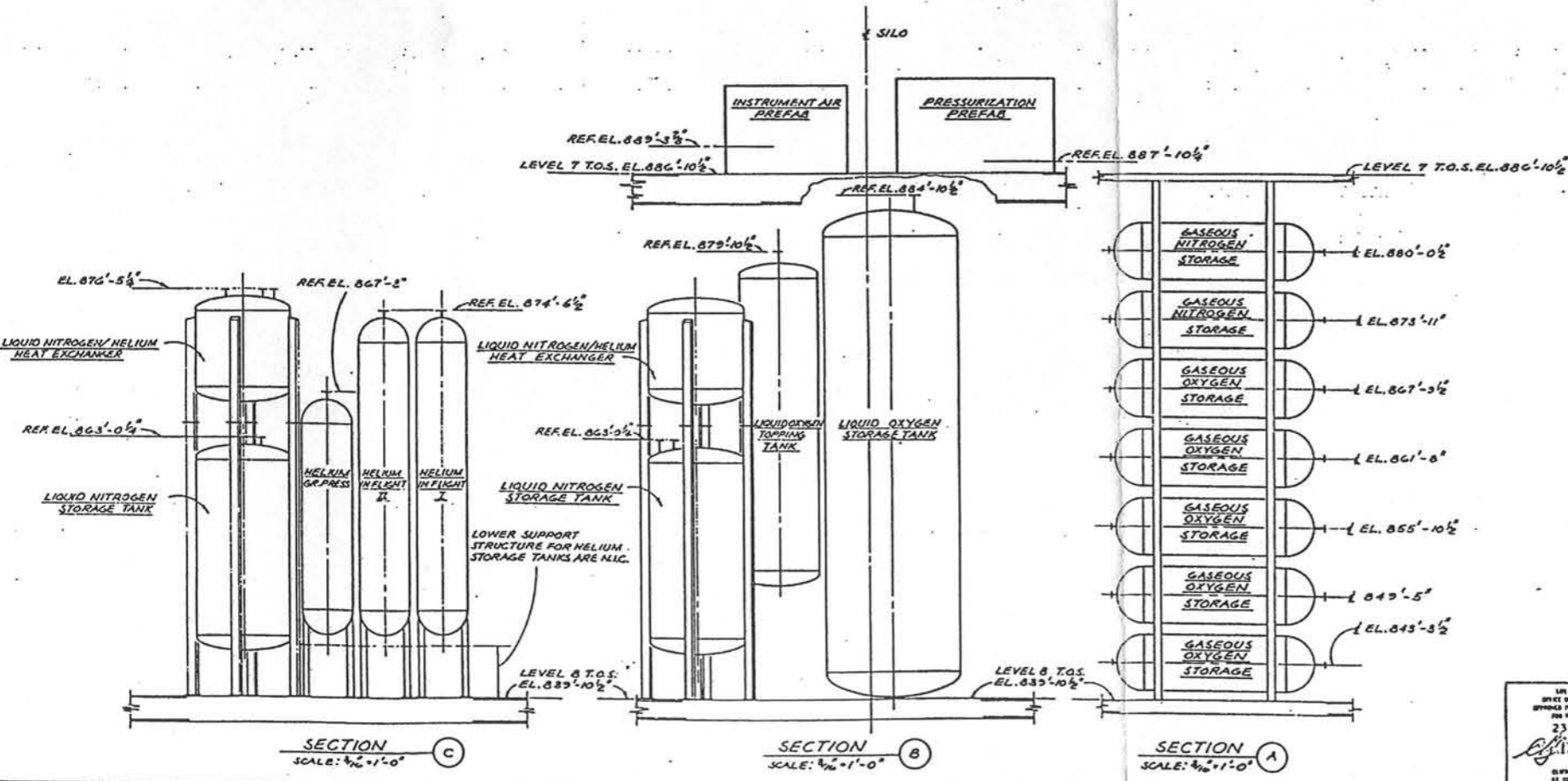
PLAN - LEVEL 7
T.O.S. EL. 876'-5 1/2"
SCALE: 3/16" = 1'-0"



SECTION O
SCALE: 3/16" = 1'-0"



SECTION E
SCALE: 3/16" = 1'-0"



SECTION C
SCALE: 3/16" = 1'-0"

SECTION B
SCALE: 3/16" = 1'-0"

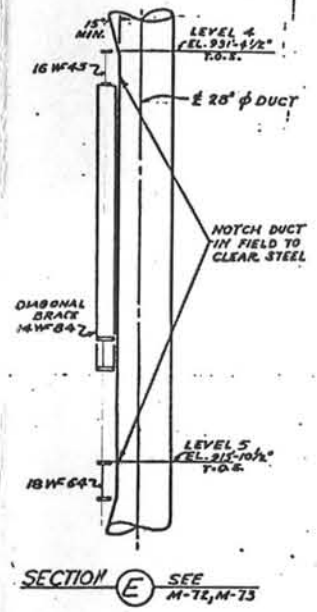
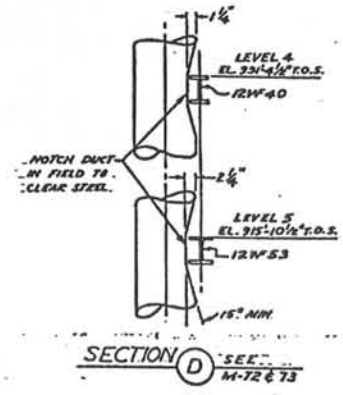
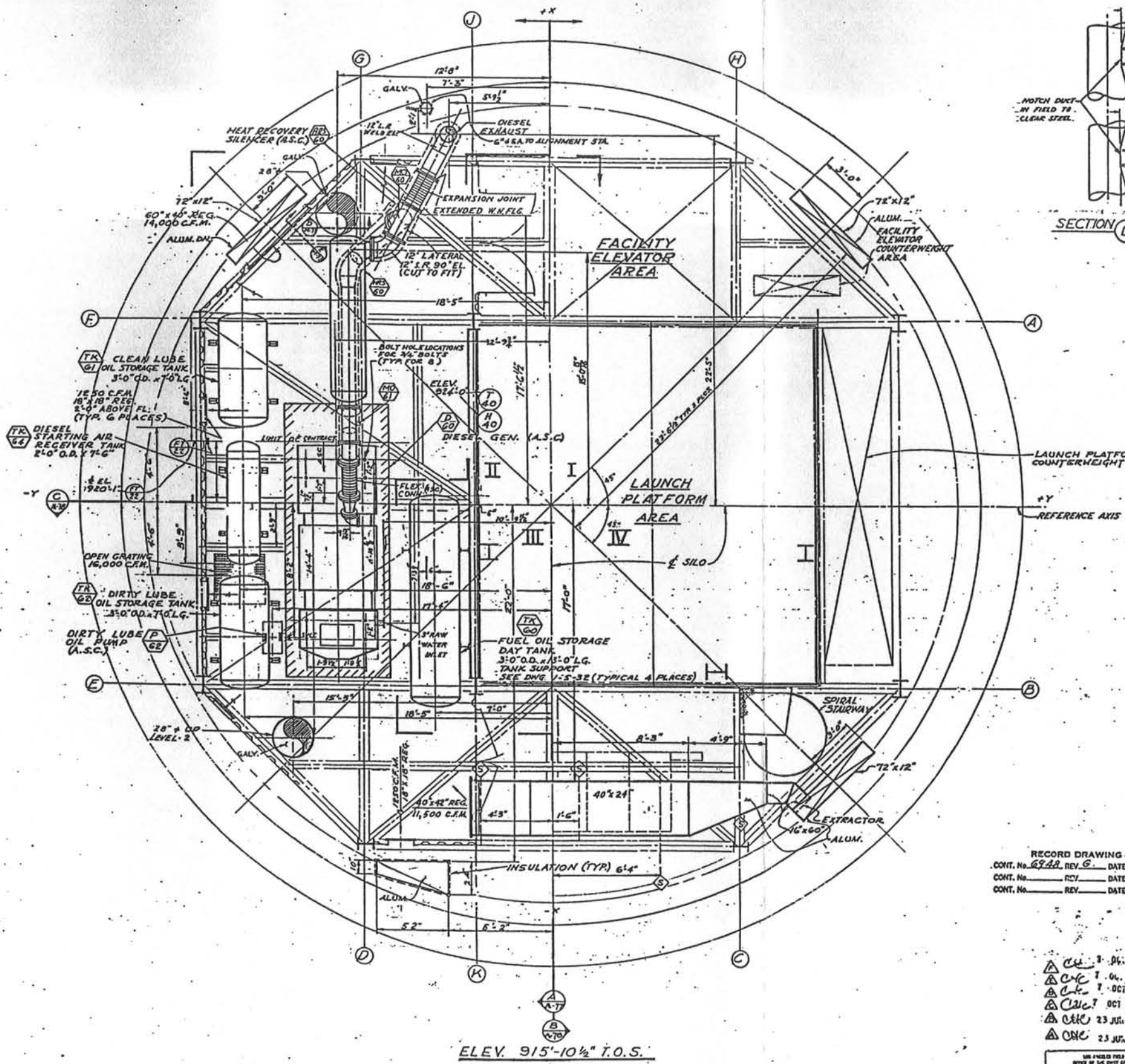
SECTION A
SCALE: 3/16" = 1'-0"

NOTES:
1. RODS REQUIRED FOR VESSEL SUPPORT & GUYING ARE N.I.C.

RECORD DRAWING - AS BUILT
CONT. No. 1948 REV. A DTS 3, 1966 (BY E.D.)
CONT. No. 177 DATE BY
CONT. No. REV. DATE BY

3-15-63	OPERATIONAL AS-BUILT	SATAF NH
1-20-66	REVISED IN ACCORDANCE WITH O.S.T.F. 2	L.A.F.E.D.
	FIELD CHANGE ORDER	
BECHTEL CORPORATION	ENGINEERS AND ARCHITECTS	DEPARTMENT OF THE AIR FORCE
1100 17th Street, San Francisco 3, California		AIR FORCE BALLISTIC MISSILE DIVISION WARD
DATE: 1-10-60	BY: REYES	WS 107A-1 O. S. T. F. (SILO)
DATE: 2-3-60	BY: HANER	VANDENBERG A. F. B. CALIFORNIA
		LAUNCHING SILO
		P.L.S. VESSELS & PREFABS
		LOCATION & ORIENTATION
		OPERATION No. (NEG. 60-2) SUR 71
		DATE: 19-Feb-60
		SCALE: 3/16" = 1'-0"
		3199-1-M-113

1965
23 FEB 1960
BY: [Signature]
SUPERVISOR: [Signature]



DRAWING NO.	TITLE
1-M-74	CONTROL SCHEMATICS
1-S-32	MSC. STEEL DETAILS
1-M-83	EQUIPMENT SCHEDULE
1-M-84	LEGEND & SYMBOLS
1-M-86	AIR-CONDITIONING FLOW DIAGRAM
1-M-78	SECTION LEVELS 4, 5 & 6
1-M-77	SECTION LEVELS 4, 5 & 6
REFERENCE DRAWINGS	

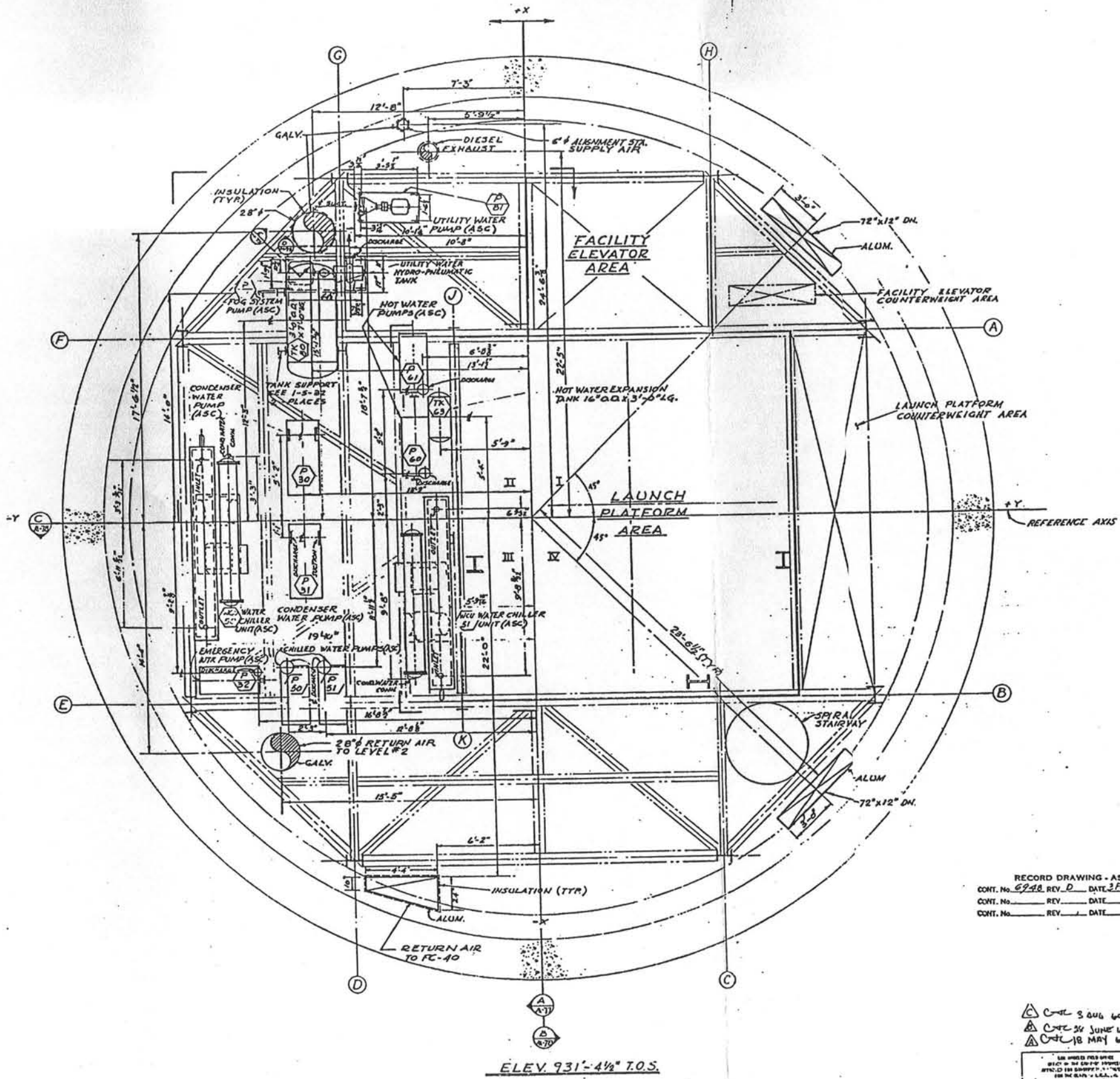
RECORD DRAWING - AS BUILT
 CONT. No. 6948, REV. 5, DATE 3 Feb 61 BY E.D.
 CONT. No. REV. DATE BY.

- △ CAC 7 Oct 1960
- △ CAC 7 Oct 1960
- △ CAC 7 Oct 1960
- △ CAC 23 Jul 1960
- △ CAC 23 Jul 1960

USE FINISHED FIELD OFFICE
 OFFICE OF THE CHIEF OF THE MISSILE
 DIVISION FOR THE DESIGN OF THE MISSILE
 2311c 1960
 OFFICE OF ENGINEERING, U.S. AIR FORCE, WRIGHT-PATTERSON AIR FORCE BASE, OHIO

REVISION	DATE	DESCRIPTION	BY	CHKD
1-15-63		OPERATIONAL AS-BUILT		
1-20-61		REVISED IN ACCORDANCE WITH O.S.T.F.-2 DISCREPANCY REPORTS		SATAP
10-7-60		REVISED DIESEL EXHAUST EXPANSION JOINT		LADE E.D.
3-19-60		CLARIFIED 12\"/>		
3-3-60		ADDDUCT SUP. & LOC. TO DIESEL EXH. (A.S.C.) TO FLEACONN. ADDED JECT. DYE (DIM. 23\"/>		
2-28-60		REVISED DIESEL GEN. FOUNDATION		BECHTEL G.H.
5-31-60		ADDD RAW WATER INLET M.R. 60 & 61 (DIM. BECHTEL G.H.)		BECHTEL G.H.
5-18-60		REV. EQUIPMENT ARRANGEMENT		BECHTEL E.D.

BECHTEL CORPORATION ENGINEERS AND ARCHITECTS 4800 SAN FRANCISCO AVENUE SAN FRANCISCO 16, CALIF.	DEPARTMENT OF THE AIR FORCE AIR FORCE BALLISTIC MISSILE DIVISION WARD 1000 AVENUE OF THE STARS WASHINGTON 25, D.C.
DRAWN BY: E. LANGRISH CHECKED BY: E. L. ... DATE: 19 FEB 1960	WS107A-1 O.S.T.F. (SILO) WANDENBERG A.F.B. CALIFORNIA LAUNCH COMPLEX LAUNCHING SILO H.V. & A.C. EQUIP. & DUCTWORK PLAN AT LEVEL 5 (NEG. 60-2) SURT 71 DATE: 19 FEB 1960 SCALE: 3/8" = 1'-0"



ODR
196
167

1-M-114	CONTROL SCHEMATICS
1-M-83	EQUIPMENT SCHEDULE
1-M-84	LEGEND & SYMBOLS
1-M-86	FLOW DIAGRAM
1-S-32	MISC. STEEL DETAILS SHEET 4
1-M-78	SECTION LEVELS 4,5,6
1-M-77	SECTION LEVELS 4,5,6
DRAWING NO.	TITLE
REFERENCE DRAWINGS	

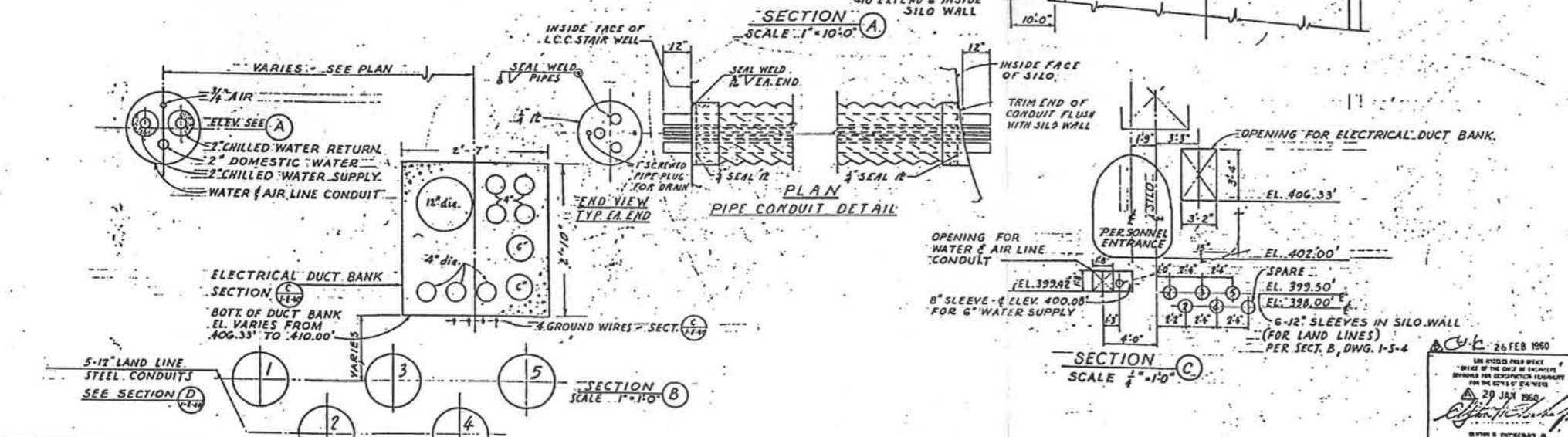
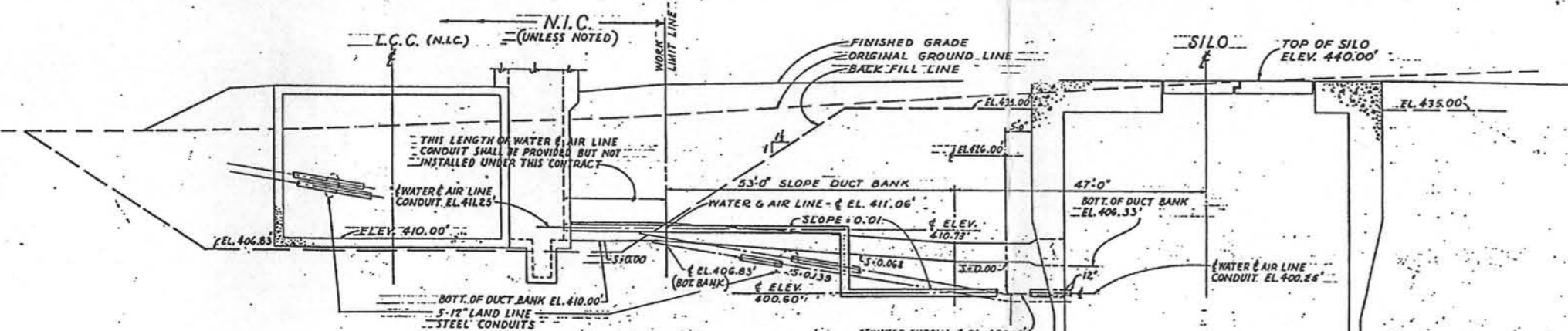
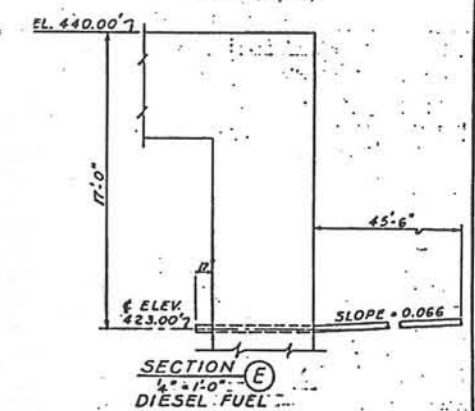
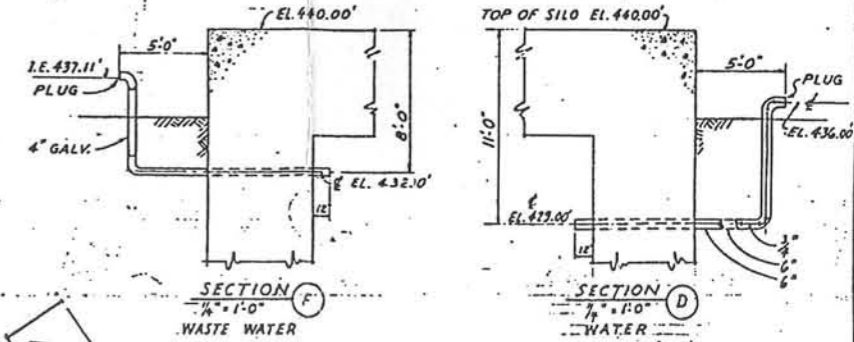
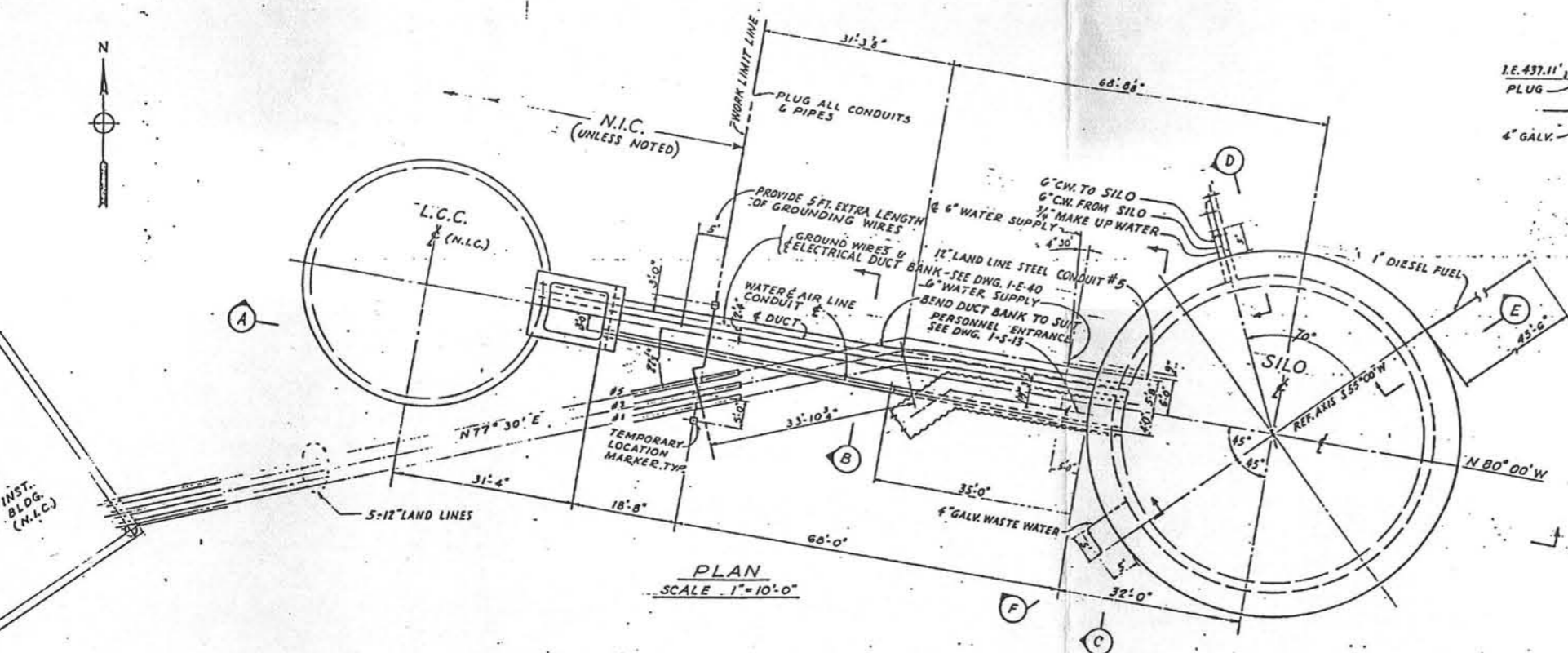


RECORD DRAWING - AS BUILT
 CONT. No. 6948 REV. D DATE 2 Feb 61 E.D.
 CONT. No. REV. DATE F
 CONT. No. REV. DATE F

REVISION	DATE	DESCRIPTION	AGENCY	UNIT
CS	3-15-63	OPERATIONAL AS-BUILT	SATAF	NH
BY	1-20-61	REVISED IN ACCORDANCE WITH O.S.T.F.-2 DISCREPANCY REPORTS	LADE	ED
BY	8-3-60	RE BEAMS. MADE RETURN AIR (DIESEL EXH. TO SCALE. CAB DIMS. 18'-7 1/2" WAS 19'-0"; 9'-8 3/4" WAS 10'-2"; 4'-4" WAS 4'-0". AIR DIMS. 23'-6", 22'-5", 6'-11 1/2", 3'-3 1/2", 6'-6". SHOWED BUILT.		
BY	5-28-60	INLET, SUCTION & DISCHARGE ON EQUIPMENT. ADD SEC. D.		
BY	5-18-60	REVISED PUMP LOCATIONS P-80, P-32, P-50, P-51, P-60, P-51		
BY	5-18-60	REVISED EQUIPMENT ARRANGEMENT		

BECHTE CORPORATION ENGINEERS AND ARCHITECTS SAN FRANCISCO - LOS ANGELES - NEW YORK		DEPARTMENT OF THE AIR FORCE AIR FORCE BALLISTIC MISSILE DIVISION (ARDD) HAWAIIAN ISLANDS	
DRAWN BY: G. GUTU 1-25-61 CHECKED BY: E.L. 8-16-60 DATE: 1-25-61		WS 107A-1 O. S. T. F. (SILO) WANDENBERG A. F. B. CALIFORNIA LAUNCH COMPLEX LAUNCHING SILO H. V. & A. C. EQUIP & DUCTWORK PLAN AT LEVEL 4	
PROJECT NO. 3199-1-M-72		DRAWING NO. (NEG. 60-2) SURT 1 DATE 19 FEB 1960 SCALE 3/8" = 1'-0"	

C-304 60
 C-304 24 JUNE 60
 C-304 18 MAY 60
 23 JUN 1960
 ELEV. 931'-4 1/2" T.O.S.



GENERAL NOTES

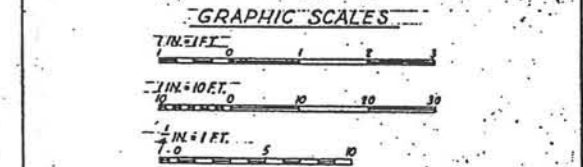
1. CONCRETE FOR DUCT BANK SHALL BE CLASS B
 2. N.I.C. = NOT IN CONTRACT.

REFERENCE DRAWINGS

3199-7-5-13 LAUNCH SILO - PERSONNEL ENTRANCE SECTS. & DETAILS.
 3199-1-E-4 ELECTRICAL AREA PLAN AT GRADE.

RECORD DRAWING - AS BUILT

CONTR. NO.	REV. C	DATE	BY
3199-3-C-15			



NO.	DATE	DESCRIPTION	AGENCY	INIT.
1		AS BUILT		
2	10/61	Added dimensions at 4" water line conduit Sec A also at Sec B based in 8" sleeves @ Sec C AS BUILT	LA 400	WFB
3	1-15-62	ADDED DIMENSIONS TO PLAN & SECTION B FOR DIESEL FUEL	LA 400	WFB
4	1-15-62	ADDED DIMENSIONS TO PLAN & SECTION B FOR DIESEL FUEL	LA 400	WFB

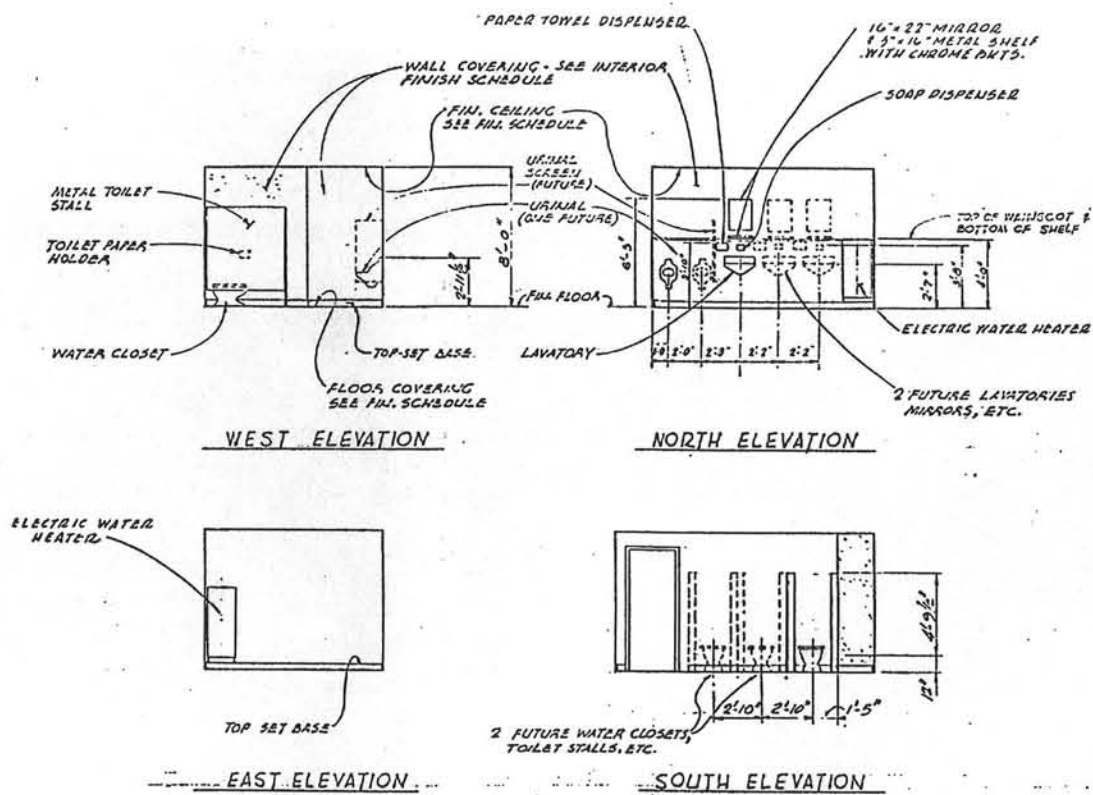
BECHEL CORPORATION
 ENGINEERS AND CONSTRUCTORS
 SAN FRANCISCO - LOS ANGELES - NEW YORK

DEPARTMENT OF THE AIR FORCE
 AIR FORCE BALLISTIC MISSILE DIVISION WABCO
 BURLINGAME, CALIFORNIA

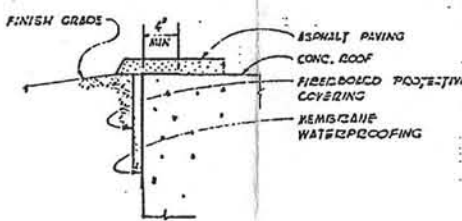
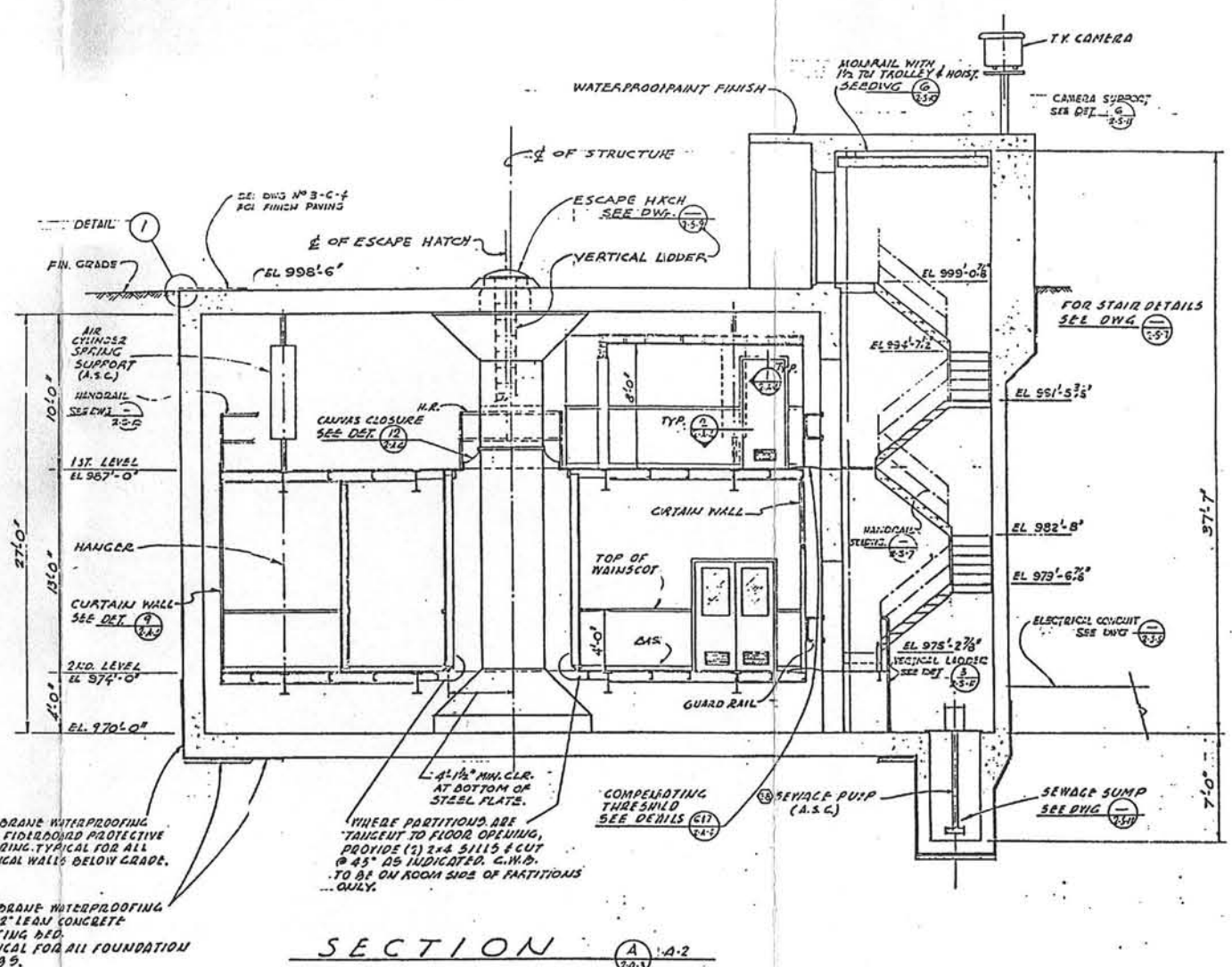
WS-107 A-1 - OSTF (SILO)
 VANDENBERG A.F.B. CALIFORNIA
 LAUNCH COMPLEX
 SILO TO L.C.C.
 INTERCONNECTING UTILITIES

DATE: 26 FEB 1960
 DRAWN BY: JC
 CHECKED BY: JC
 APPROVED BY: JC
 DATE: 26 FEB 1960

OC 3-60-16
 JAN. 1960
 3199-3-C-15



TOILET ELEVATIONS

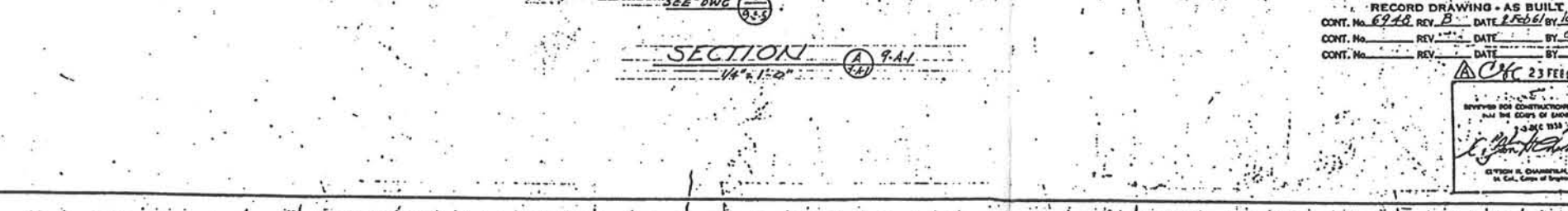
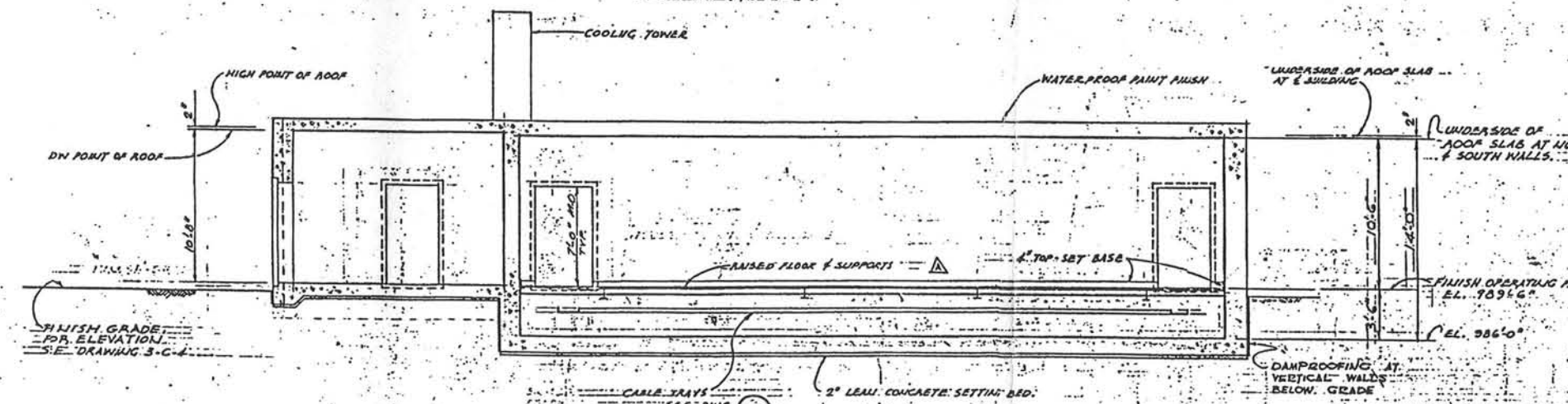
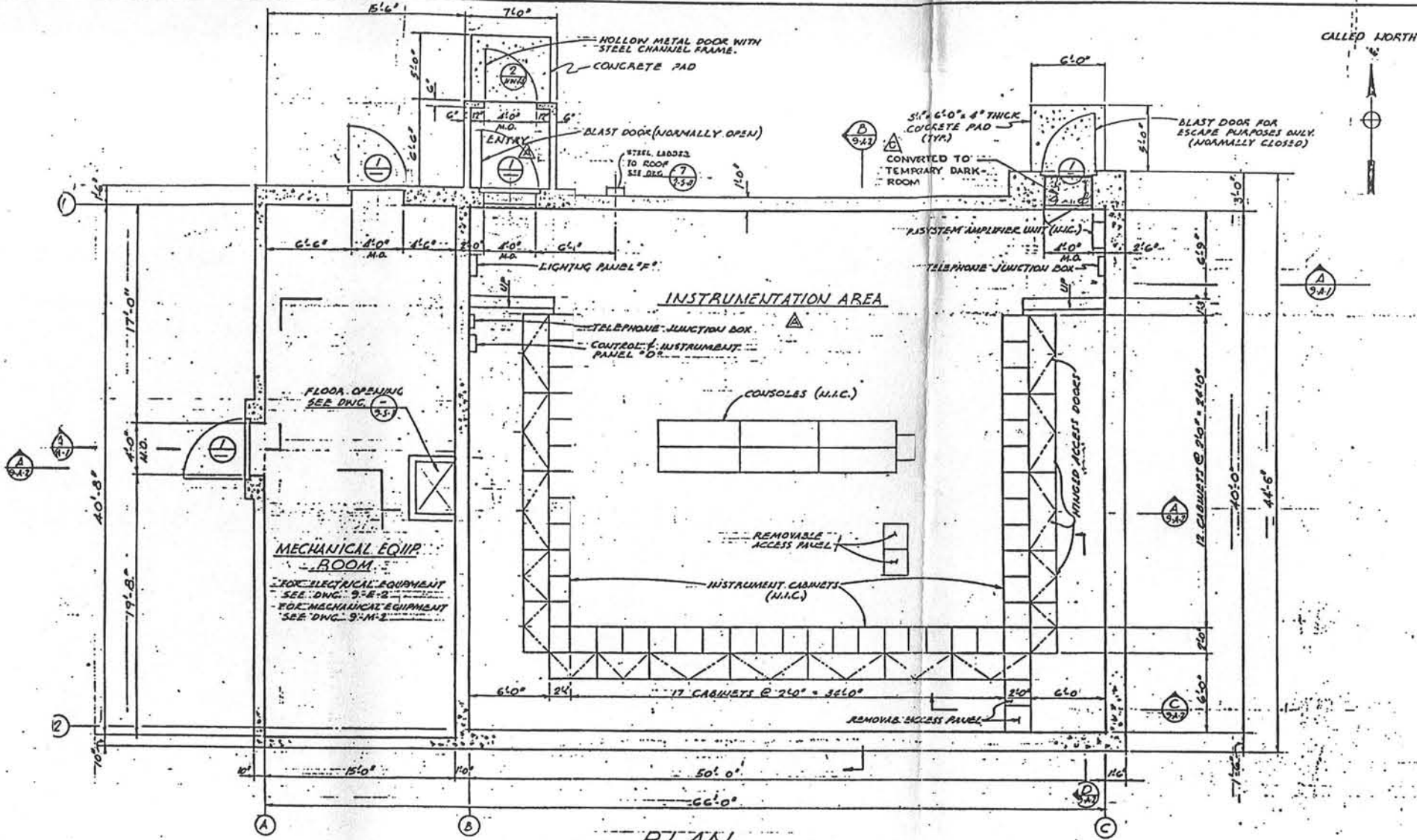


RECORD DRAWING - AS BUILT
 CONT. No. 6948 REV. B DATE 2 FEB 61 BY *in charge*
 CONT. No. 127 DATE BY

APPROVED FOR CONSTRUCTION READABILITY FOR THE CORPS OF ENGINEERS
 DEC 23 1950
[Signature]
 COLVIN H. CHANDLER, JR.
 Lt. Col., Corps of Engineers

REVISION	DATE	DESCRIPTION	AGENCY	INIT.
1	5-15-6	OPERATIONAL AS BUILT		
2	1/20/6	AS-BUILT ISSUE - NO REVISIONS		
3	2/10/6	ISSUE TOILET FIXTURES AND GUARD RAIL, REFILES STAIRS AND REFORM ELECTRICAL DISTRIBUTION, REFILES PAINTWORK AND MARKS		

BECHEL CORPORATION ENGINEERS AND CONSTRUCTORS SAN FRANCISCO - LOS ANGELES - NEW YORK	DEPARTMENT OF THE AIR FORCE AIR FORCE BALLISTIC MISSILE DIVISION WARD INLEWOOD, CALIFORNIA
DESIGNED BY <i>RCP</i> DATE <i>12-21-57</i>	WS-107 A-1 OSTF (SILO)
DRAWN BY <i>W.A.S.</i> DATE <i>12-21-57</i>	VANDENBERG A.F.B. CALIFORNIA
CHECKED BY <i>RCP</i> DATE <i>12-21-57</i>	LAUNCH COMPLEX
IN CHARGE <i>[Signature]</i> DATE <i>12-21-57</i>	LAUNCH CONTROL CENTER
APPROVED BY <i>[Signature]</i> DATE <i>12/1/58</i>	SECTION & DETAILS
APPROVED FOR CONSTRUCTION BY <i>[Signature]</i> DATE <i>DEC 23 1950</i>	SPECIFICATION No. (MFG 60-2) Sup 71
	DATE <i>21 DEC 1959</i> SCALE <i>8 1/10" = 1'-0"</i>
	ISSUED <i>DEC 22 1959</i>
	PROJECT <i>3199-2-A-3</i>
	DATE <i>1/35</i>



GENERAL NOTES

- DOORS #1 SHALL BE BLAST RESISTANT. NOMINAL SIZE 4'0" x 7'0". FOR EXACT SIZE AND DETAILS SEE DWG. 3-5-9. DOOR #2 SHALL BE HOLLOW METAL DOOR. NOMINAL SIZE 4'0" x 7'0" x 1 1/4" THICK. FRAME SHALL BE C.E.R.E. DETAILED IN DWG. 3-5-7. UPPER PORTION OF DOOR GLAZED WITH 1/4" THICK CLEAR POLISHED WIRE GLASS.
- MECHANICAL EQUIPMENT ROOM AND ENTRY: FLOOR SHALL BE CONCRETE SLAB; STEEL TROWEL FINISH. WALLS AND CEILING SHALL BE EXPOSED CONCRETE.
- INSTRUMENTATION AREA: SUBFLOOR SHALL BE CONCRETE SLAB. WOOD FLOOR FINISH. 1/4" STEEL PLATE WITH LUNDBLUM RAISED FLOOR SHALL BE 1/4" STEEL PLATE WITH LUNDBLUM TILE FLOOR OVERING. WALLS & CEILING SHALL BE EXPOSED CONCRETE. WALLS SHALL HAVE A 4" HIGH TOP-SET BASE AT THE FLOOR.
- PAINTING SHALL BE IN ACCORDANCE WITH GENERAL NOTE NO. 6 ON DWG. 3199-2-A-1.
- PAINTED SURFACES:
 - METAL DOORS AND DOOR FRAMES, COLOR IN 148751
 - EXTERIOR OF ROOF SLAB
 - EXPOSED PORTION OF STEEL STAIRS, COLOR IN 24875
- UNPAINTED SURFACES:
 - ALL INTERIOR CONCRETE SURFACES
 - EXTERIOR CONCRETE WALLS ABOVE GRADE
 - STEEL FLOOR FRAMING
- ELEVATIONS SHOWN ARE BASED ON A REFERENCED ELEVATION AT TOP OF FINISHED OPERATING FLOOR = 709'6". FOR ACTUAL ELEVATION SEE DWG. 3199-3-C-4.

LEGEND

- DOOR NUMBER, SEE GENERAL NOTES ON THIS DRAWING.
- WINDOW SET NUMBER - SEE SPECIFICATION.
- SECTION LETTER OR DETAIL NUMBER.
- DRAWING ON WHICH SECTION OR DETAIL APPEARS.
- COLUMN LINE NUMBER OR LETTER.
- DENTES REINFORCED CONCRETE WALLS.
- CONC. CONCRETE
- MAX. MAXIMUM
- M.O. MASONRY OPENING
- N.I.C. MASONRY CONTRACT
- O.C. ON LETTERS.

NOTE:
CHECK: 1935 - Do AW 1549/1-73
FOR SOME ADDL DETAILS.

REVISION	DATE	DESCRIPTION	AGENCY	INIT.
1	3-7-63	AS-BUILT		
2	10-21-61	ISSUE - NO REVISION		
3	2-20-60	REVISED TO SHOW REVISIONS		

RECORD DRAWING - AS BUILT
CONT. No. 6748 REV. B DATE 1 Feb 61 BY 10 Change
CONT. No. REV. DATE BY 55K
CONT. No. REV. DATE BY

AW 1549/1-73
23 FEB 61
REVISIONS FOR CONSTRUCTION
BY THE CONTRACTOR
1-3-61 1961
STEVENS & CHAMBERLAIN, INC.
14 CAL. CORP. OF ENGINEERS

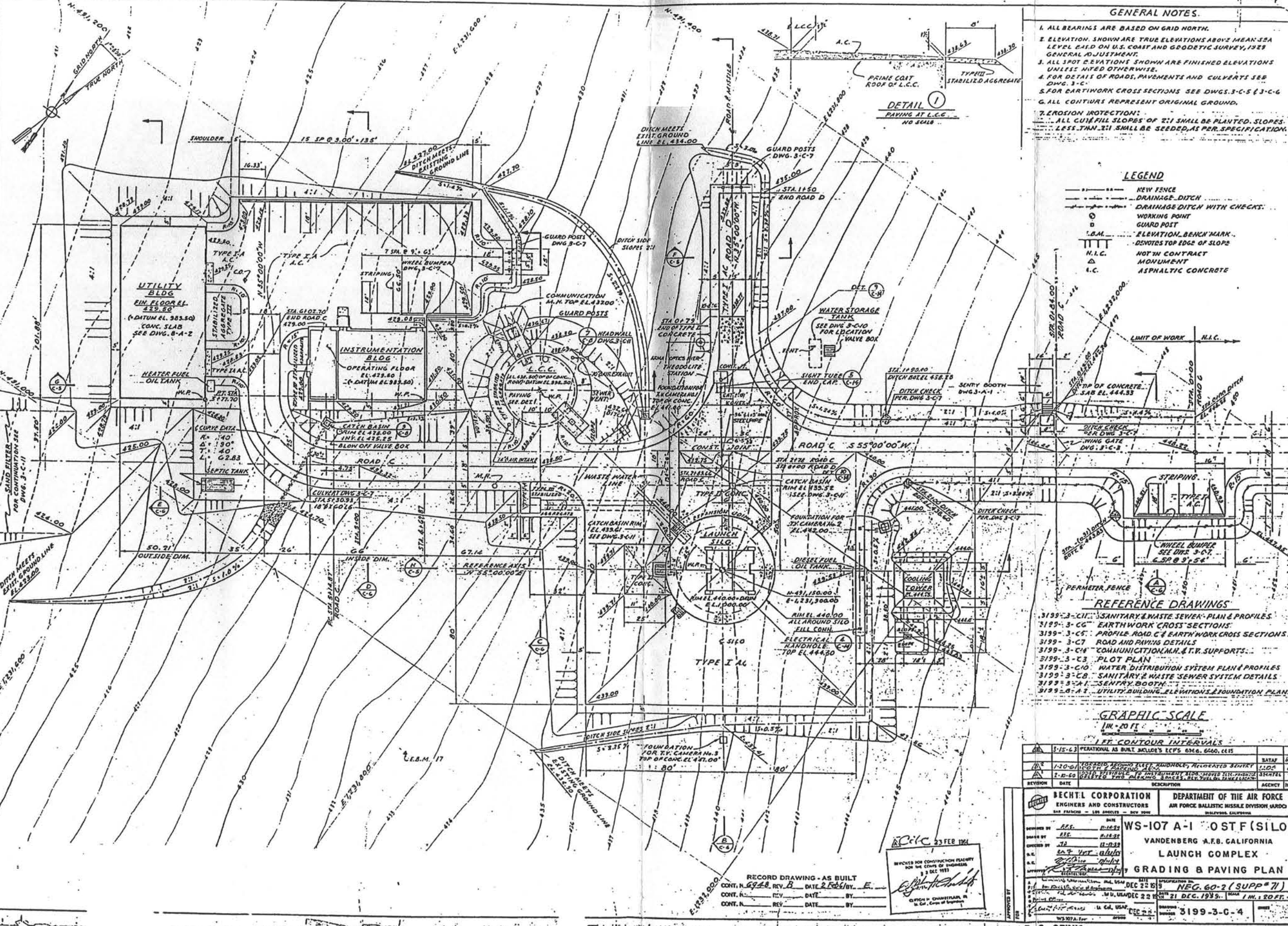
BECHTL CORPORATION		DEPARTMENT OF THE AIR FORCE	
ENGINEERS AND CONSTRUCTORS		AIR FORCE BALLISTIC MISSILE DIVISION (ARDC)	
DESIGNED BY	R.C.L. 11-25-57	DATE	DEC 22 59
DRAWN BY	R.C.L. 11-25-57	DATE	27 DEC 1959
CHECKED BY	R.C.L. 11-25-57	DATE	DEC 22 59
APPROVED BY	R.C.L. 11-25-57	DATE	DEC 22 59
PROJECT: WS-107 A-1 OSTF (SILO)		SPECIFICATION: (Neg 60-2) Sup 71	
DRAWING: VANDENBERG AFB CALIFORNIA LAUNCH COMPLEX INSTRUMENTATION BUILDING FLOOR PLAN		SCALE: 1/8" = 1'-0"	
PROJECT NO. 3199-9-A-1		DRAWING NO. 103	

GENERAL NOTES.

1. ALL BEARINGS ARE BASED ON GRID NORTH.
2. ELEVATION SHOWN ARE TRUE ELEVATIONS ABOVE MEAN SEA LEVEL BASED ON U.S. COAST AND GEODETIC SURVEY, 1929 GENERAL ADJUSTMENT.
3. ALL SPOT ELEVATIONS SHOWN ARE FINISHED ELEVATIONS UNLESS NOTED OTHERWISE.
4. FOR DETAILS OF ROADS, PAVEMENTS AND CULVERTS SEE DWG. 3-C-1.
5. FOR CANTONMENT CROSS SECTIONS SEE DWGS. 3-C-5 & 3-C-6.
6. ALL CONTOURS REPRESENT ORIGINAL GROUND.
7. EROSION PROTECTION:
ALL CUT-FILL SLOPES OF 2:1 SHALL BE PLANTED. SLOPES LESS THAN 2:1 SHALL BE SEEDDED, AS PER SPECIFICATION.

LEGEND

- — — NEW FENCE
- - - DRAINAGE DITCH
- - - DRAINAGE DITCH WITH CHECKS
- WORKING POINT
- GUARD POST
- △ ELEVATION BENCH MARK
- ▽ NOTES TOP EDGE OF SLOPE
- N.I.C. NOT IN CONTRACT
- ▲ MONUMENT
- △ ASPHALTIC CONCRETE



REFERENCE DRAWINGS

- 3199-3-C-11 SANITARY & WASTE SEWER PLAN & PROFILES
- 3199-3-C-12 EARTHWORK CROSS SECTIONS
- 3199-3-C-13 PROFILE ROAD C & EARTHWORK CROSS SECTIONS
- 3199-3-C-14 ROAD AND PAVING DETAILS
- 3199-3-C-15 COMMUNICATION M.M. & T.V. SUPPORTS
- 3199-3-C-16 PLOT PLAN
- 3199-3-C-17 WATER DISTRIBUTION SYSTEM PLAN & PROFILES
- 3199-3-C-18 SANITARY & WASTE SEWER SYSTEM DETAILS
- 3199-3-A-1 SENTRY BOOTH
- 3199-3-A-2 UTILITY BUILDING ELEVATIONS & FOUNDATION PLAN

GRAPHIC SCALE

1 IN. = 20 FT.

1 FT. CONTOUR INTERVALS

NO.	DATE	DESCRIPTION	BY	CHKD.
1	3-15-63	PERMANENT AS BUILT INCLUDES ECF'S 6566, 6460, 6475		
2	1-20-64	FORWARD RECORDS, ECF'S, RELOCATED SENTRY BOOTH & PAVING PLAN		
3	7-10-60	REVISIONS TO RECORDS, ECF'S, RELOCATED SENTRY BOOTH & PAVING PLAN		

BECHTEL CORPORATION
ENGINEERS AND CONSTRUCTORS
SAN FRANCISCO - LOS ANGELES - NEW YORK

DEPARTMENT OF THE AIR FORCE
AIR FORCE BALLISTIC MISSILE DIVISION (ARDB)
WALTONVILLE, CALIFORNIA

WS-107 A-1 OSTF (SILO)
VANDENBERG AFB, CALIFORNIA
LAUNCH COMPLEX
GRADING & PAVING PLAN

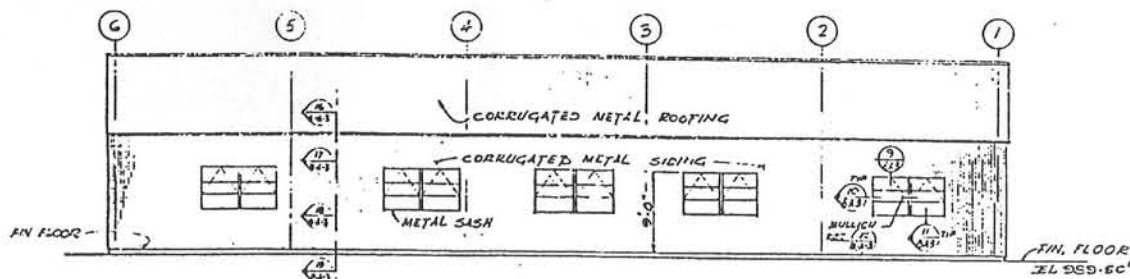
APPROVED BY: *[Signature]* DATE: 53 FEB 1964

REVISIONS FOR CONSTRUCTION READY FOR THE CONSTRUCTION OF THIS DRAWING: 3 DEC 1959

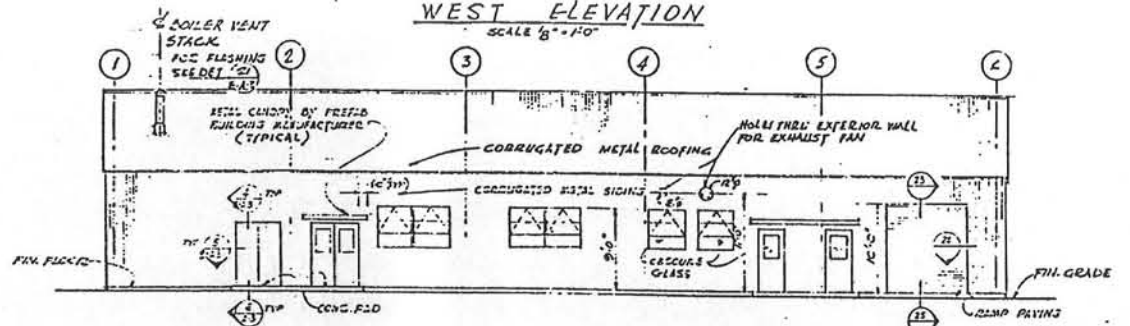
APPROVED BY: *[Signature]* DATE: 21 DEC 1959

3199-3-C-4

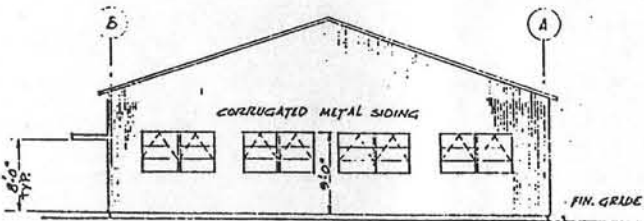
RECORD DRAWING - AS BUILT
CONT. N. 6948 REV. B DATE 2 Feb 1964 BY E
CONT. N. REV. DATE BY
CONT. N. REV. DATE BY



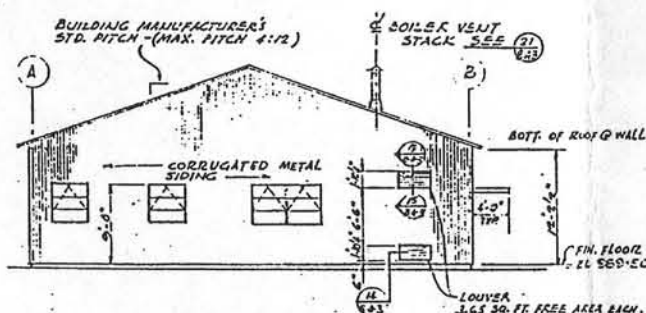
WEST ELEVATION
SCALE 1/8" = 1'-0"



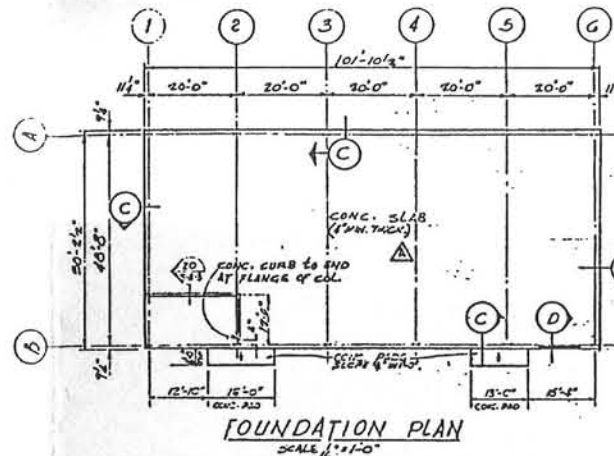
EAST ELEVATION
SCALE 1/8" = 1'-0"



NORTH ELEVATION
SCALE 1/8" = 1'-0"



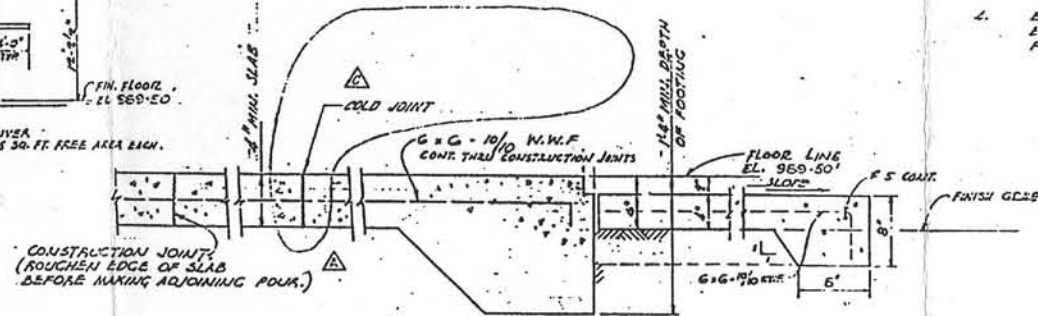
SOUTH ELEVATION
SCALE 1/8" = 1'-0"



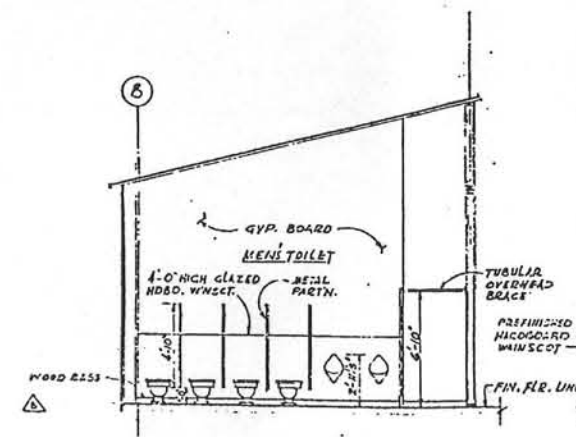
FOUNDATION PLAN
SCALE 1/4" = 1'-0"

NOTE:-

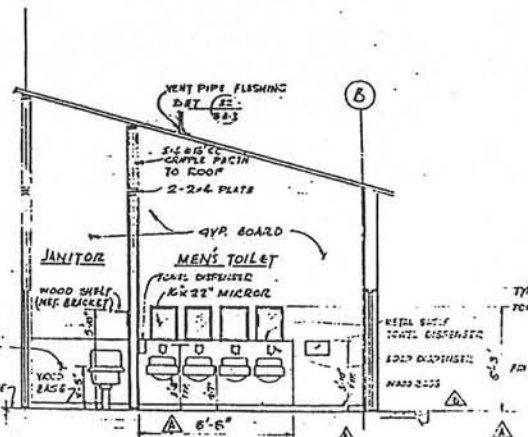
- FOUNDATION FOR BUILDING SHALL BE DESIGNED AND DETAILED BY PRECASTED BUILDING MANUFACTURER, IN ACCORDANCE WITH SPECIFICATIONS.
- FOUNDATION DIMS. ON THIS DWG. (B-A-2) ARE APPROXIMATE. FORMING & SETTING OF ANCHOR BOLTS SHALL BE DONE FROM DIMS. SHOWN ON PRECASTED BUILDING MANUFACTURER'S FOUNDATION DRAWING.
- FOR CONCRETE DESIGN & CONSTRUCTION NOTES SEE GENERAL NOTES ON DWG. AT 3199-2-5-1.
- ELEVATIONS SHOWN ARE BASED ON A REFERENCE ELEVATION AT FINISHED FLOOR = 989' G.I. FOR ACTUAL ELEVATION SEE DWG. 3199-3-C-2.



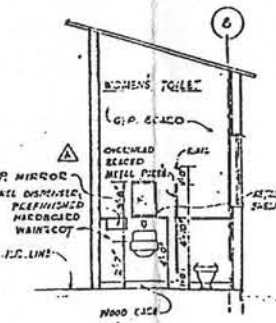
SECTION C
SCALE 1/2" = 1'-0"



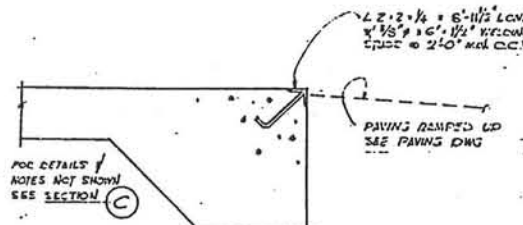
SECTION A
SCALE 1/4" = 1'-0"



SECTION B
SCALE 1/4" = 1'-0"



SECTION E
SCALE 1/4" = 1'-0"



SECTION D
SCALE: 1/2" = 1'-0"

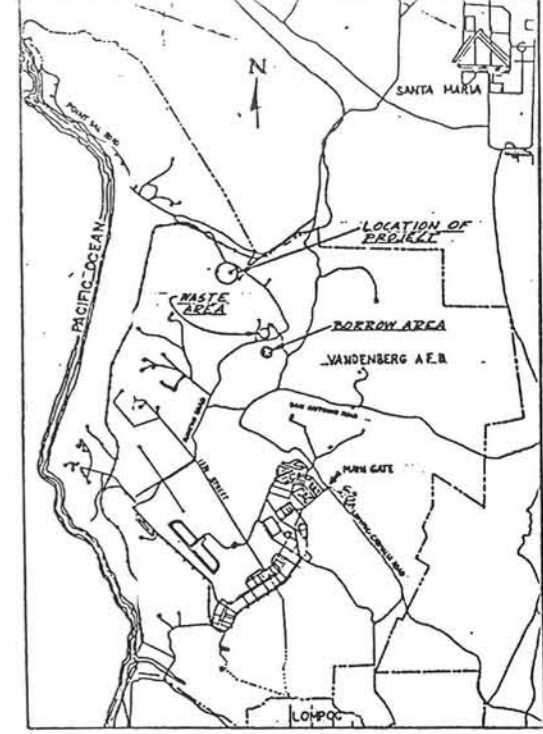
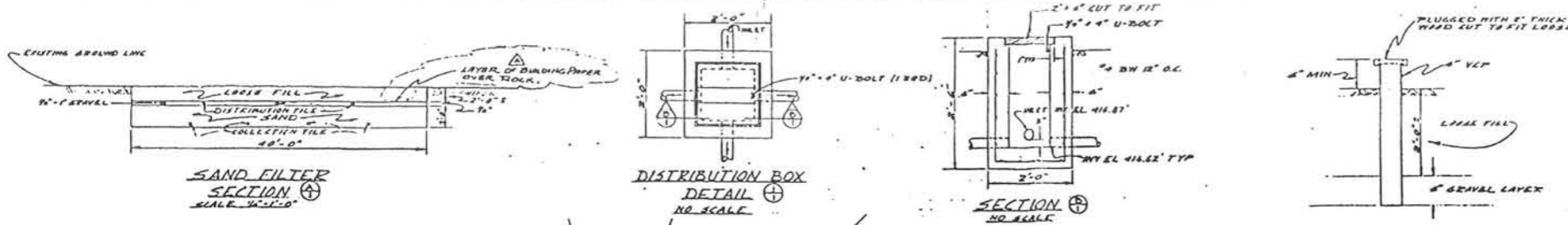
TOILET ELEVATIONS

RECORD DRAWING - AS BUILT
CONT. No. 6949, REV. C, DATE 2/25/61 BY No. Change
CONT. No. REV. DATE BY
CONT. No. REV. DATE BY

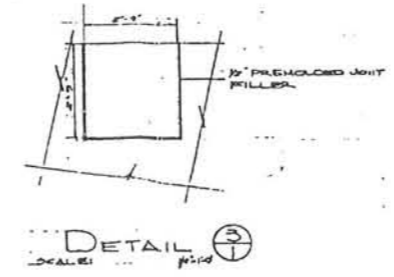
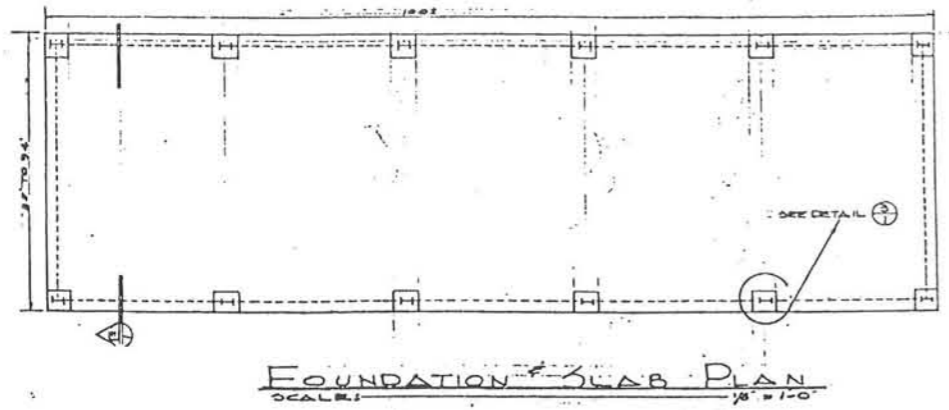
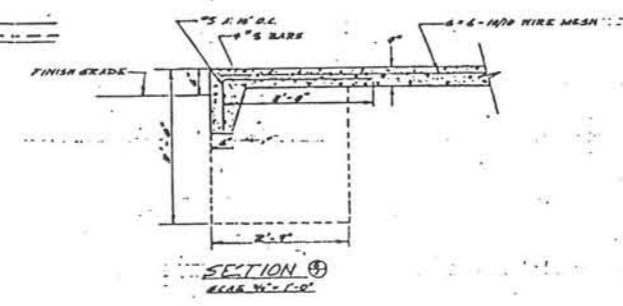
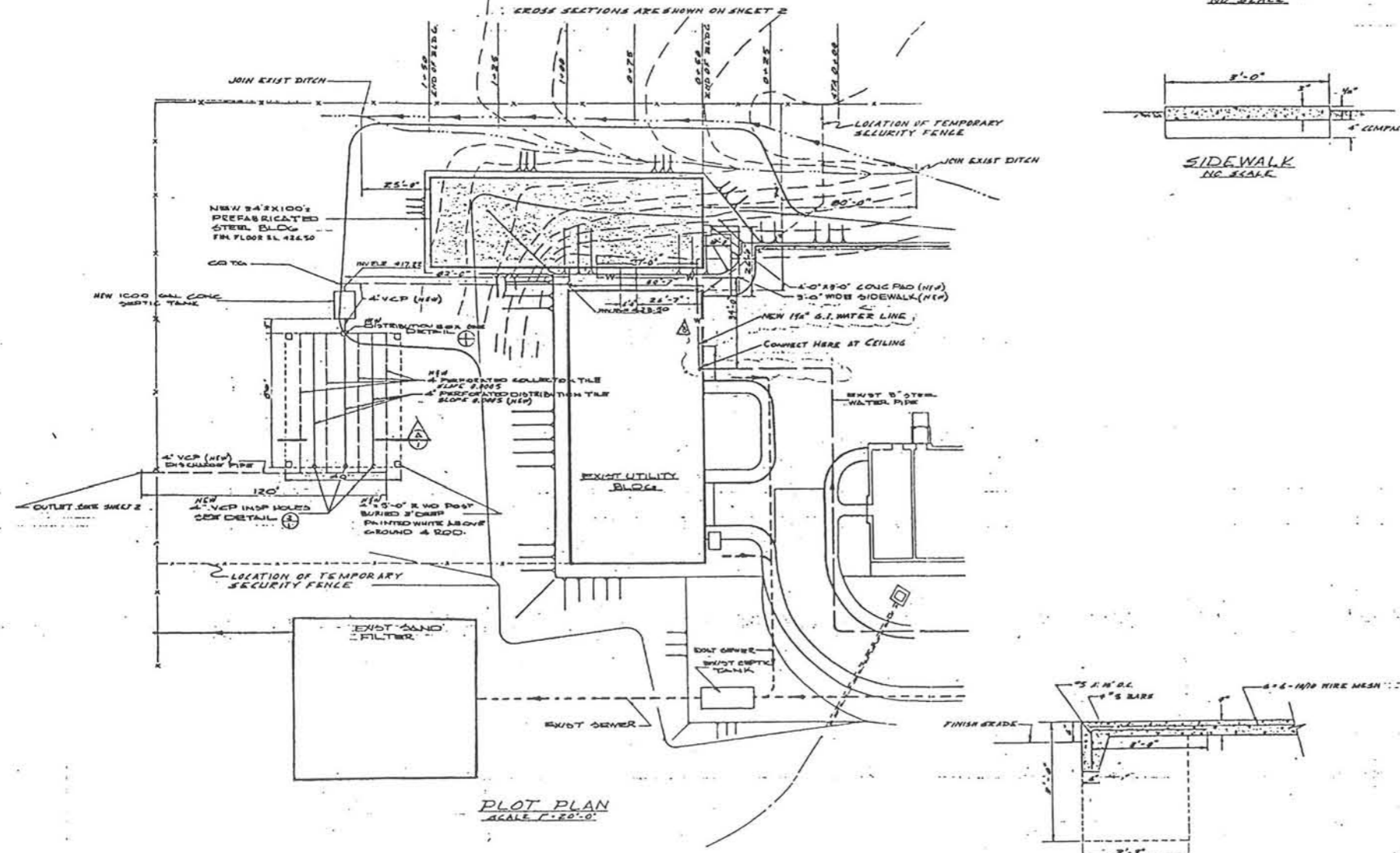
CIC 3 27 1960
CIC 23 FEB 1961
REVIEWED FOR CONSTRUCTION FEASIBILITY FOR THE COPY OF...
BY...
U. S. AIR FORCE

NO.	DATE	DESCRIPTION	BY	CHKD.
1	3-15-60	OPERATIONAL AS BUILT		
2	1-20-61	REPLACED C.P. JOINTS WITH TOLD JOINTS		
3	4-25-60	ADDED 2\"/>		
4	2/10/60	ADDED 2\"/>		

BECHTEL CORPORATION ENGINEERS AND CONSTRUCTORS 344 FRANCISCO - LOS ANGELES - NEW YORK	DEPARTMENT OF THE AIR FORCE AIR FORCE BALLISTIC MISSILE DIVISION WABCO BOLTWOOD, CALIFORNIA
DRAWN BY: RCP CHECKED BY: JMG, CMC APPROVED BY: RCP DATE: 1-25-60	WS-107 A-1 OSTF (SILO) VANDENBERG A.F.B. CALIFORNIA LAUNCH COMPLEX UTILITY BUILDING ELEVATIONS & FND. PLAN
APPROVED BY: [Signature] DATE: DEC 22 1959 U. S. AIR FORCE	(New 60-2) Sup. 71 DATE: 21 DEC. 1959 SCALE: AS NOTED NUMBER: 3199-8-A-2

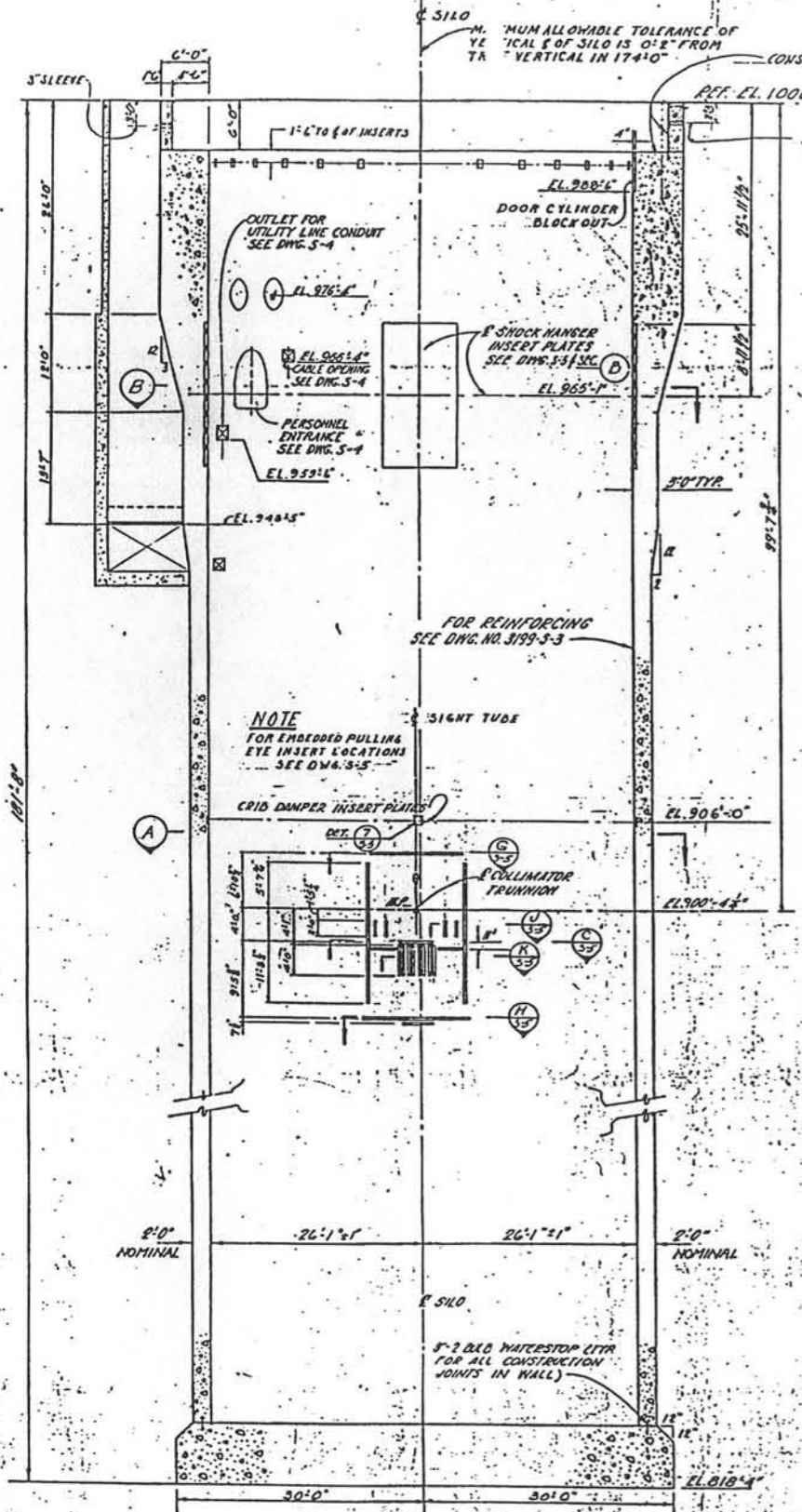


- NOTES:**
1. THE STEEL PREFABRICATED BUILDING SHALL BE SIMILAR OR EQUAL TO A STRUCTURE OF THE FOLLOWING MANUFACTURERS:
 - A. ARMO STEEL BUILDINGS; ARMED LS-2
 - B. BUTER MANUFACTURING CO; BUTER LRF2
 - C. U.S. STEEL BUILDINGS INC. (SIMILAR TO ABOVE)
 2. A SECTION OF THE SECURITY FENCE MAY BE REMOVED AND A TEMPORARY FENCE PLACED BY THE CONTRACTOR TO PROVIDE ACCESS TO THE WORK SITE. RANGE TOWER LEADING DISTRICTS. SIGNAGE SHALL BE SHOWN FOR GENERAL ARRANGEMENT. SHOP DRAWINGS ARE REQUIRED.

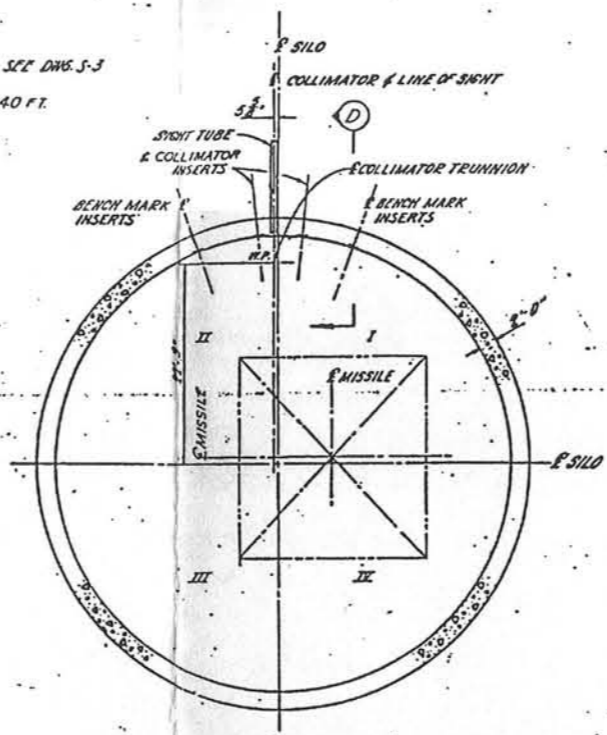


DESIGNED BY	DATE
CHECKED BY	DATE
APPROVED BY	DATE

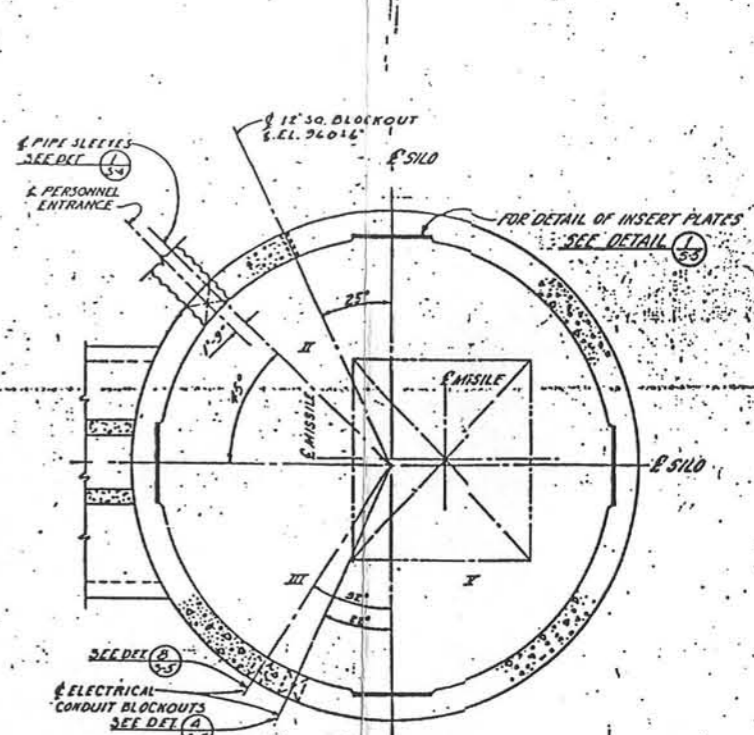
DATE	DESCRIPTION	BY	APP'D
5 May 64	RELOCATE WATER LINE	JWS	JWS
6 Feb 64	ADD 2\"/>		
STRATEGIC AIR COMMAND			
VANDENBERG AIR FORCE BASE, CALIFORNIA			
REPLACE LAUNCH SUPPORT FACILITY			
OSTF II (576 G)			
PLOT PLAN, DETAILS & SECTIONS			
SCALE	A: SHOWN	DATE	138-4
DESIGNED BY	DATE	APPROVED BY	DATE
CHECKED BY	DATE	APPROVED BY	DATE
DATE	7 JAN 64	APPROVED BY	138-4



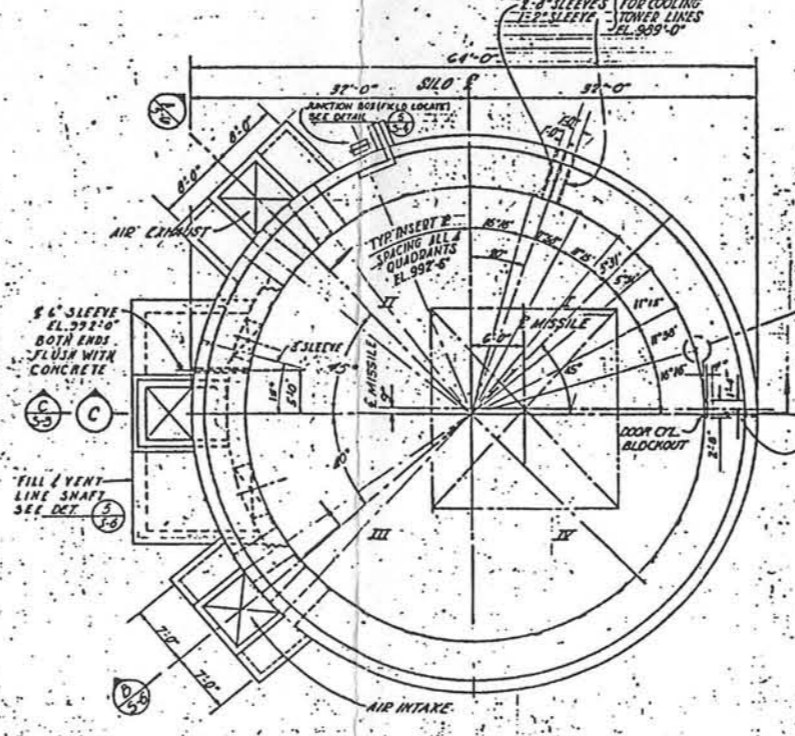
SECTION C
SCALE: 1/4" = 1'-0"



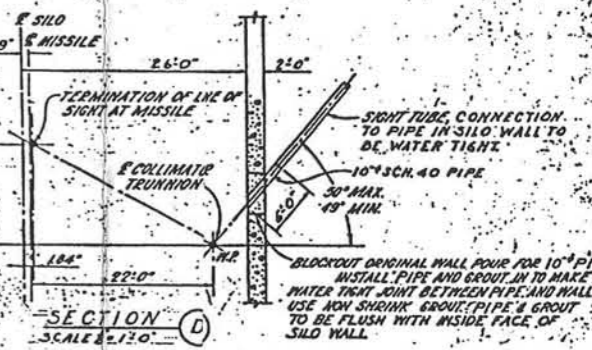
SECTION A
SCALE: 1/8" = 1'-0"



SECTION B
SCALE: 1/8" = 1'-0"



PLAN
SCALE: 1/8" = 1'-0"



SECTION D
SCALE: 1/2" = 1'-0"

NOTE
ALL ANGLES LOCATING BLOCKOUTS AND INSERTS ON THE WALL ARE MEASURED FROM THE 0-0 OF THE SILO.

REVISION	DATE	DESCRIPTION	AMOUNT	BY
1	10-14-51	ADDED GROUND ELEVATION 440' AT BULK	CR23	KNO
2	2-9-60	REVISED DOOR CYL. BLOCKOUT (CRIB DAMPER) INSERT PLATES	RECH12	RTS
3	1-2-60	INJECT 1 DIM. LEL OF SLEEVES IN PLAN & SECT D	RECH12	RTS
4	1-2-60	ADDED ELECTRICAL BLOCKOUT IN SECT B	RECH12	RTS
5	1-2-60	DELETE AIR EXHAUST, ADDED PIPE DUCT, SLEEVES	RECH12	RTS
6	1-2-60	REVISED ELEVATIONS, ADDED CRIB DAMPER INSERT PLATES	RECH12	RTS
7	1-2-60	REVISED COLLIMATOR INSERT PLATES	RECH12	RTS
8	1-2-60	ADD FILL VENT LINE ADDITION FOR PULLING EYE INSERT	RECH12	RTS
9	1-2-60	ADDED 6" SLEEVES, REVISED AIR INTAKE AIR EXHAUST	RECH12	RTS
10	1-2-60	REVISED EMBEDDED STEEL FOR COLLIMATOR, FLANGED	RECH12	RTS
11	1-2-60	OPENINGS FOR UTILITY LINE CONDUIT, ADDED INSERT PLATES	RECH12	RTS
12	11-9-59	DELETE DIM. ELECTRICAL, REV. TAB SECT. REL. PIPE SLEEVES	RECH12	RTS
13	11-9-59	PLAN, SECT B, REL. BLOCKOUT & EL. SECT. B	RECH12	RTS
14	9-21-59	REVISED FLOOR SLAB I CHANGED COLLIMATOR DETAIL 101	RECH12	RTS
15	9-21-59	INSERT LOCATIONS, WALL OPENINGS, AIR INTAKE DIMENSIONS, CHANGED & FLEX OF SHOCK LINGER, DELETED COLLIMATOR INSERT LOCATION IN SEC. A VESTIBULE, ADDED DOOR CYL. BLOCKOUT & SLEEVES	RECH12	RTS

BECHTEL CORPORATION
ENGINEERS AND ARCHITECTS
SAN FRANCISCO - LOS ANGELES - NEW YORK

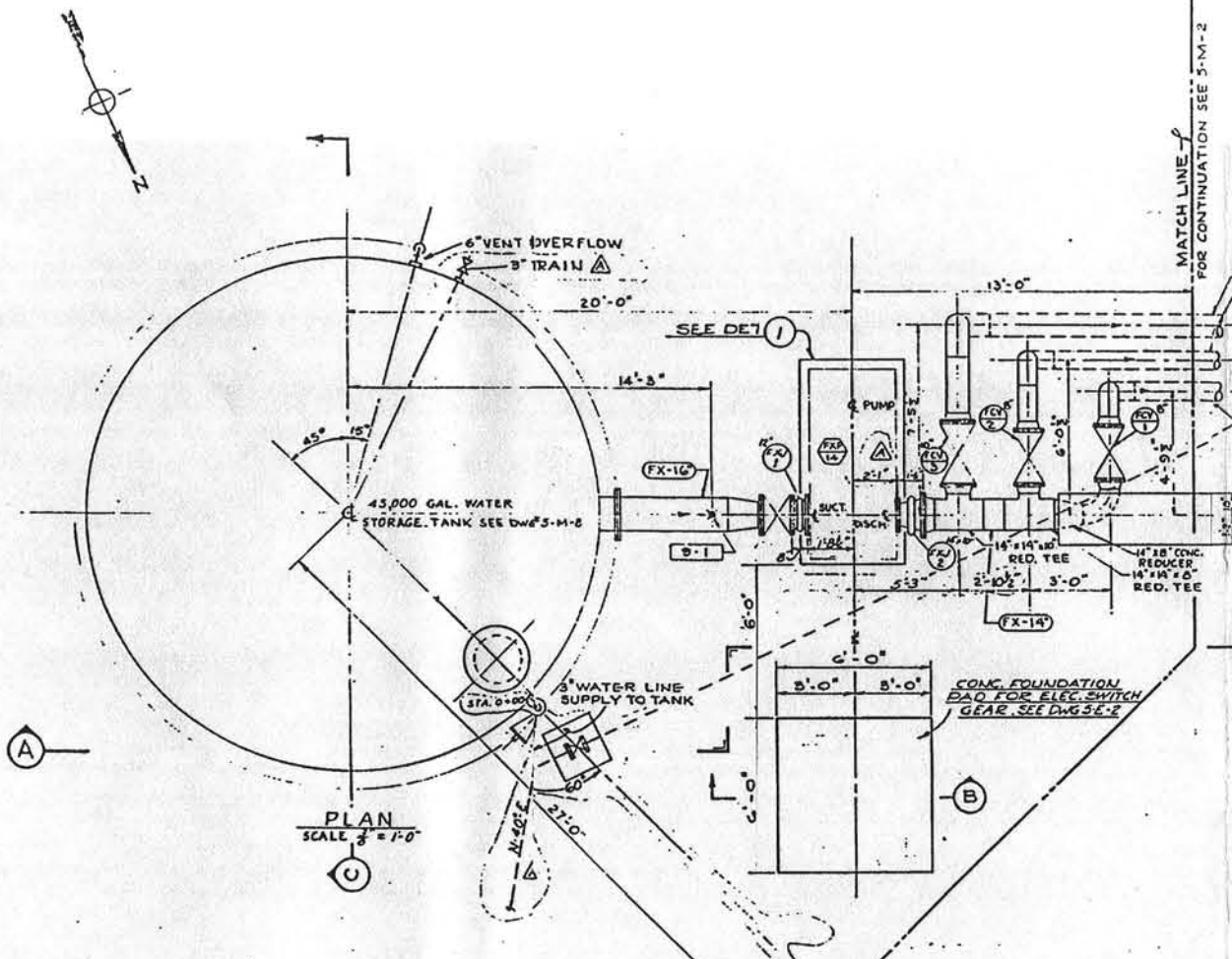
DEPARTMENT OF THE AIR FORCE
AIR FORCE BALLISTIC MISSILE DIVISION (ARDC)
WILLOW GROVE, CALIFORNIA

DATE: 26 FEB 1960
BY: CMC
DATE: 20 JAN 1960
BY: CMC
DATE: 19 NOV 1959
BY: CMC
DATE: 23 SEP 1959
BY: CMC

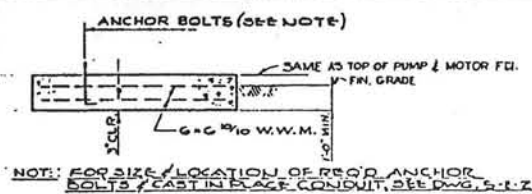
WS-107 A-1 O.S.T.F. (SILO)
YANDBERG AFB, CALIFORNIA
LAUNCH COMPLEX
GENERAL ARRANGEMENT
PLANS & ELEVATIONS

NO.	DATE	DESCRIPTION	BY
1	1-15-63	OPERATIONAL AS BUILT, INCLUDES ECP'S 6249	...

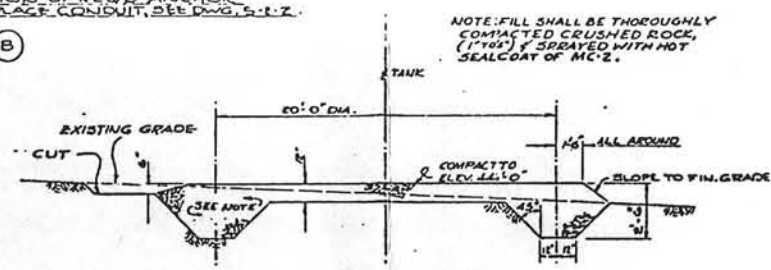
RECORD DRAWING - AS BUILT
CONT. No. 6928, REV. E, DATE 1 May 61, EL. CY. C.N.B.
CONT. No. REV. DATE BY



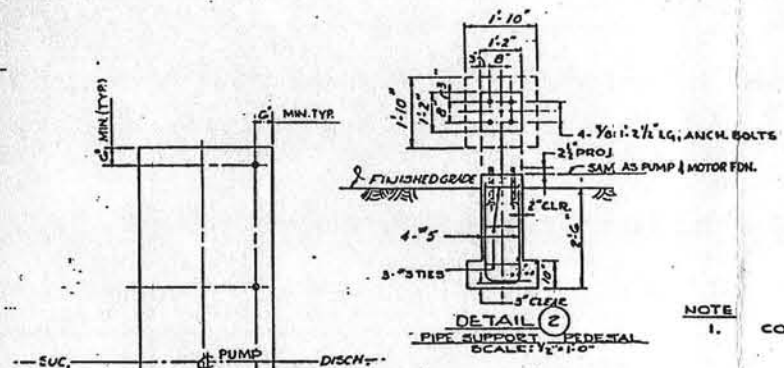
PLAN
SCALE: 1/8" = 1'-0"



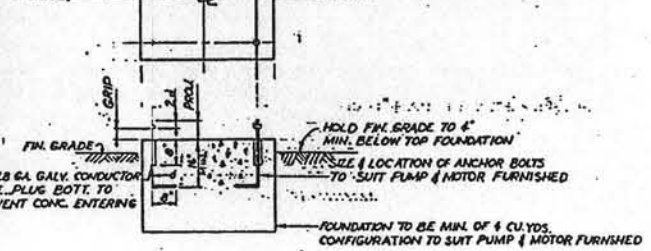
SECTION
SCALE: 1/2" = 1'-0"



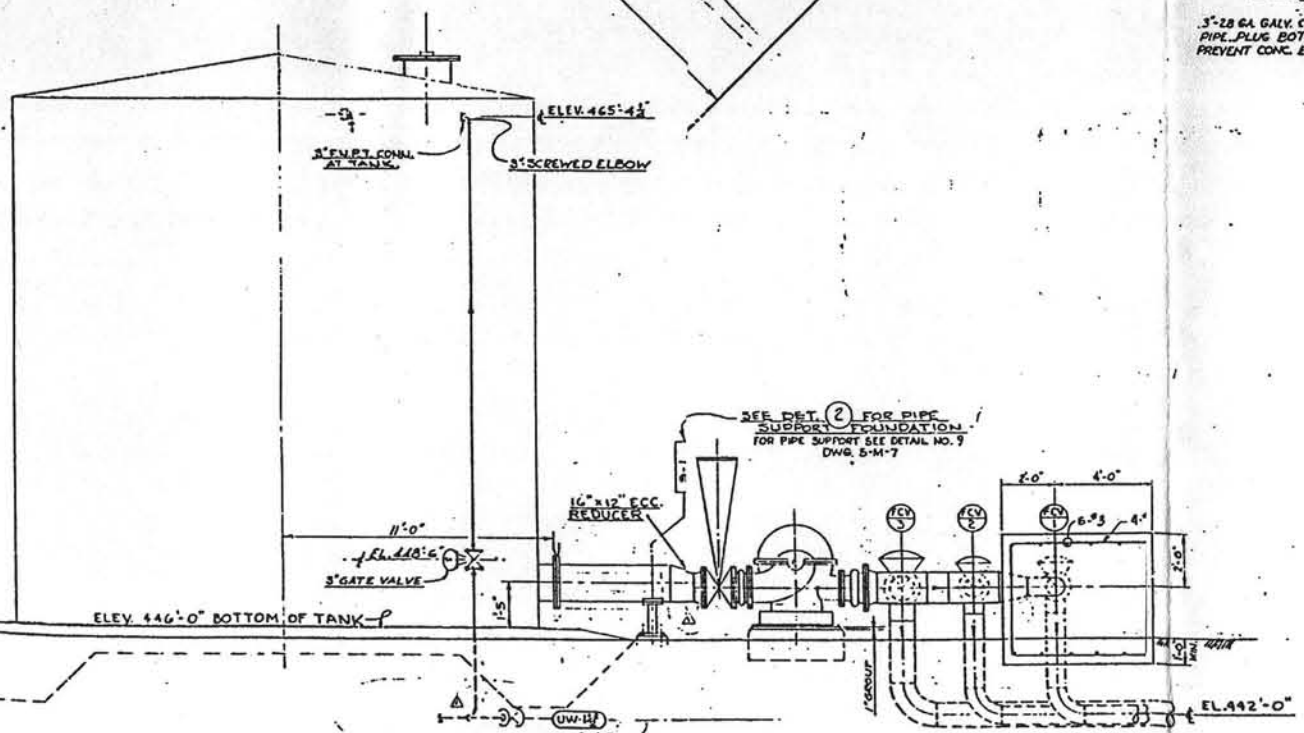
SECTION
TANK FOUNDATION
SCALE: 1/4" = 1'-0"



DETAIL 2
PIPE SUPPORT DETAIL
SCALE: 1/2" = 1'-0"



DETAIL 1
PUMP PEDIESTAL
SCALE: 1/4" = 1'-0"

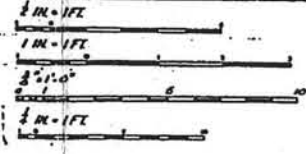


SECTION
SCALE: 1/8" = 1'-0"

RECORD DRAWING - AS BUILT
CONT. No. 6748 REV. A DATE 31 MAR 61 BY N.H.
CONT. No. REV. DATE BY
CONT. No. REV. DATE BY

DRAWING NO.	TITLE
3199-5-M-1	FLOW DIAGRAM
3199-5-M-7	TANKER DETAILS
3199-5-M-8	STORAGE TANK
3199-5-M-4	PIPING PROFILE, SECTIONS & DETAILS AT GRADE
3199-5-M-2	SITE LOCATION & PIPING PLAN AT GRADE

REFERENCE DRAWINGS



REVISION	DATE	DESCRIPTION	AGENCY	INIT.
1	3-15-63	OPERATIONAL AS BUILT	SATAP	WV
2	3-31-61	AS-BUILT ISSUE - REVISED PER FIELD INFORMATION	LADE	WV

BECHTEL CORPORATION
ENGINEERS AND ARCHITECTS
SAN FRANCISCO - LOS ANGELES - NEW YORK

DEPARTMENT OF THE AIR FORCE
AIR FORCE BALLISTIC MISSILE DIVISION WADD
WALTONVILLE, CALIFORNIA

DATE: 10 NOV 1960
PROJECT: WS-107A-1 OSTF (SILO)
VANDENBERG AFB, CALIFORNIA
LAUNCH COMPLEX
FIREX SYSTEM
PUMPING STA. PIPING PLAN & SECTIONS

DESIGNED BY: HARRY MITES, M.O.E.
DRAWN BY: HARRY MITES, M.O.E.
CHECKED BY: C. B. H. S. M.
APPROVED BY: [Signature]

DATE: 10 NOV 1960
PROJECT: WS-107A-1 OSTF (SILO)
VANDENBERG AFB, CALIFORNIA
LAUNCH COMPLEX
FIREX SYSTEM
PUMPING STA. PIPING PLAN & SECTIONS

DATE: 10 NOV 1960
PROJECT: WS-107A-1 OSTF (SILO)
VANDENBERG AFB, CALIFORNIA
LAUNCH COMPLEX
FIREX SYSTEM
PUMPING STA. PIPING PLAN & SECTIONS

