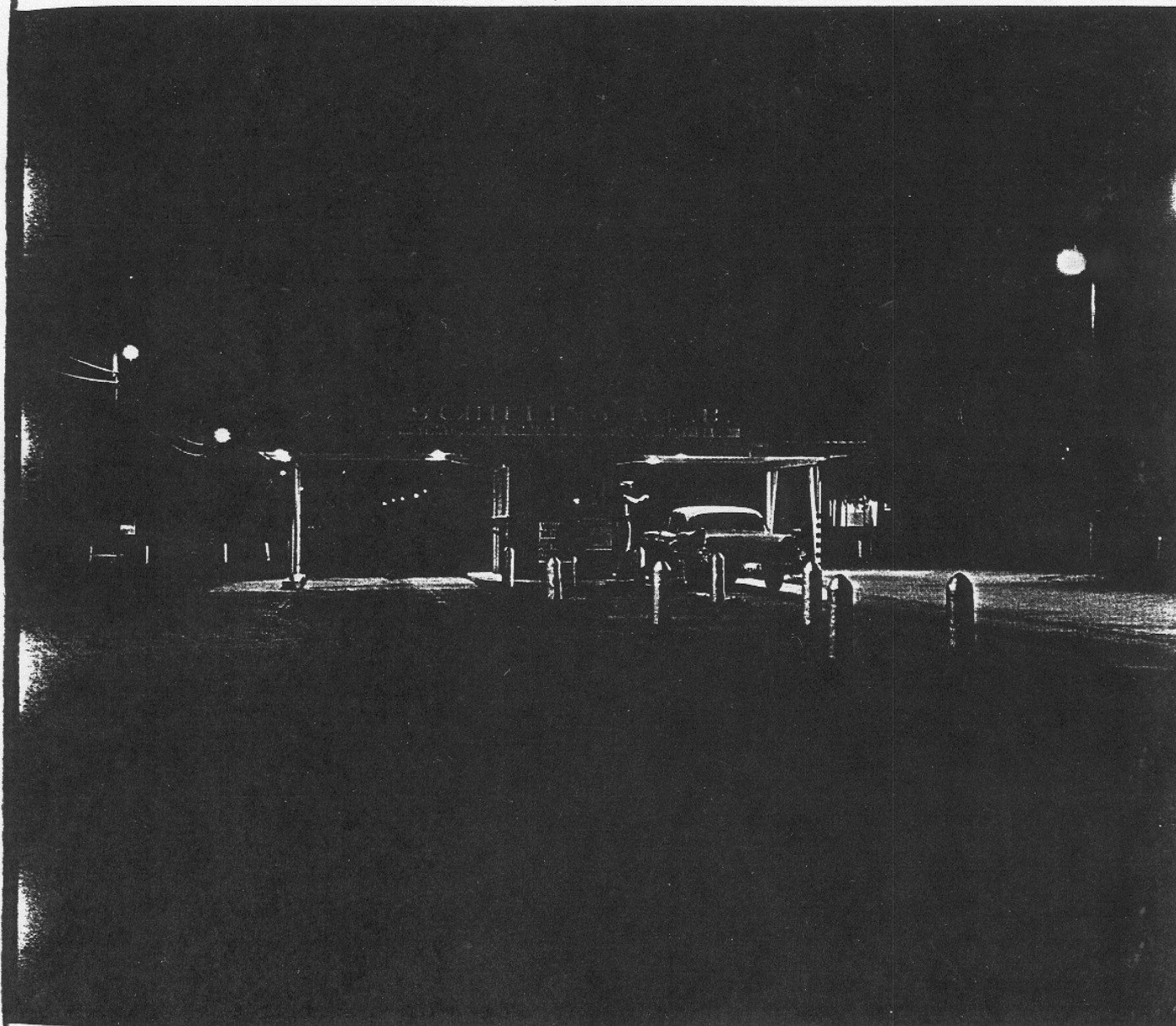


WELCOME TO SCHILLING AIR FORCE BASE



Main Gate at night

KA
358
S3342

KANSAS COLLECTION
SALINA PUBLIC LIBRARY

310th Strategic Aerospace Wing
310th Combat Support Group

TABLE OF CONTENTS

Aero Club	10	Marymount College	39
Accounting and Finance	10	Medical Care	17
Air Force Aid Society	10	NCO Open Mess	18
Auto Registration	10	NCO Wives' Club	18
Barber Shops	11	Nursery	18
Base Bank	11	Officers' Open Mess	18
Base Exchange Services	11	Officers' Wives Club	18
Base Map	26-27	Our Host — Salina	31
Base Newspaper	12	Passes and Identification	19
Bethany College	37	Personal Affairs	19
Bowling Alley	12	Pets	19
Chapel Activities	12	Processing In	19
Checks, Cashing	13	Recreation Services Supply	19
Clothing Sales Store	13	Red Cross	19
Commissary	13	Salina Area Map	42-43
Communications Squadron, 2028th (AFCS)	13	Schilling Elementary School	21
Community Center	13	Schilling Manor	21
Community Living	32	Signing In	21
Credit Union	14	St. John's Military School	40
Daily Bulletin	14	Telephone Service	21
Duty Hours	14	Theater	21
Education, Off Duty	14	Thrift Shop	21
Emergency Numbers	45	Traffic on Base	21
Family Services	15	Transportation	21
Gymnasium	15	Uniform	21
Household Goods	15	Visitors	21
Housing On Base	16	Water Service and Refuse Disposal Off Base	22
Kansas Wesleyan University	38	Weapons, Privately Owned	22
Legal Assistance	16	Western Union and Mars	22
Library	16	Youth Center	22



USAF Photo

Colonel
David
Carl
Schilling

Schilling Air Force Base

Welcome to Schilling Air Force Base, a key installation of the Strategic Air Command, a base with an interesting history and the home of organizations steeped in traditionally fine performance.

Construction of Smoky Hill Army Air Field — as the base was originally known — was begun in April of 1942. In the early days of World War II, Smoky Hill Army Air Field was an active base for the B-17 bombers and later became the nation's first operational training base for the B-29 Superfortresses.

The base was inactivated in April of 1950 and reactivated in April of 1951 during the Korean conflict. In 1952 the 310th Bombardment Wing and the 40th Bombardment Wing were assigned to Smoky Hill Air Force Base. The base was designated as a permanent Air Force installation in July of 1953.

Still hosting the 40th and 310th Bombardment Wings, Smoky Hill Air Force Base was officially renamed Schilling Air Force Base in March of 1957 in honor of the late Colonel David Carl Schilling, a Kansas-born fighter ace and leading air strategist. It was Colonel Schilling who first proved the global strike-force concept a reality by in-flight refueling of two F-84 jet fighter aircraft on September 22nd, 1950. The

two F-84s flew non-stop from Manston Air Base near London, England to Mitchell Field, New York.

The base continued hosting the 310th and the 40th Bombardment Wings until 1960 when the 40th was ordered to nearby Forbes Air Force Base at Topeka, Kansas.

In October 1962 the 550th Strategic Missile Squadron with its complex of Atlas "F" missile sites became operational as an integral part of the base and the 310th Wing.

With the addition of the 550th Strategic Missile Squadron and the proposed assignment of B-52 aircraft, the 310th Bombardment Wing was officially redesignated as the 310th Strategic Aerospace Wing in March of 1962.

With the 310th Strategic Aerospace Wing, its squadrons of bombers, tankers and missiles and the numerous support and tenant organizations, Schilling continues to be one of the most important bases in the Free World's strongest peace force — The Strategic Air Command.

Welcome aboard. We are happy to have you on our team.

S
F
tl
n

V
v
1
A
F
M

3
S
f
(
F
L

f
V
a
H
e
H

a
f
(

f
t
D

t
r
C

S
C
C
L

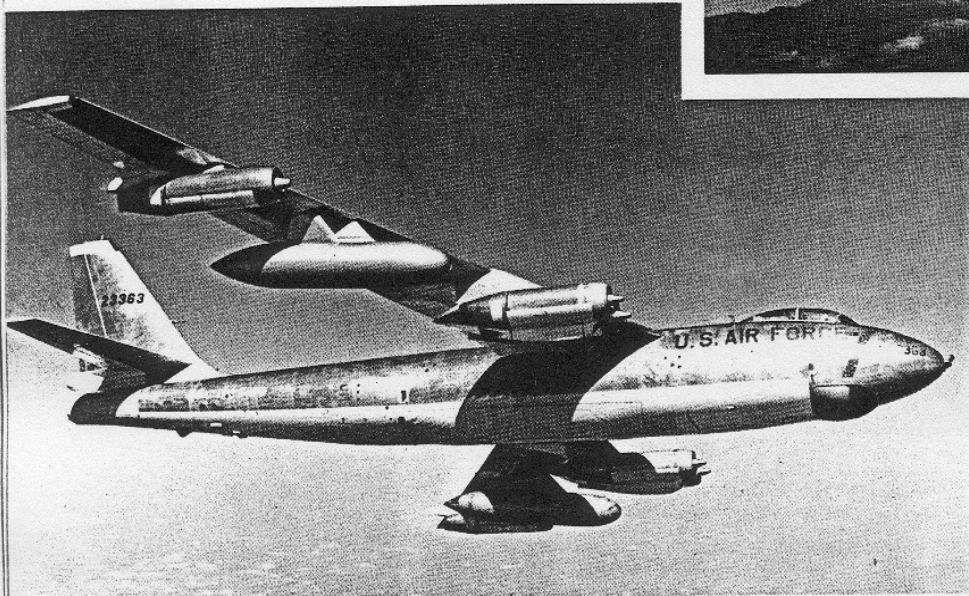


KC-135

Courtesy, The Boeing Company

B-47

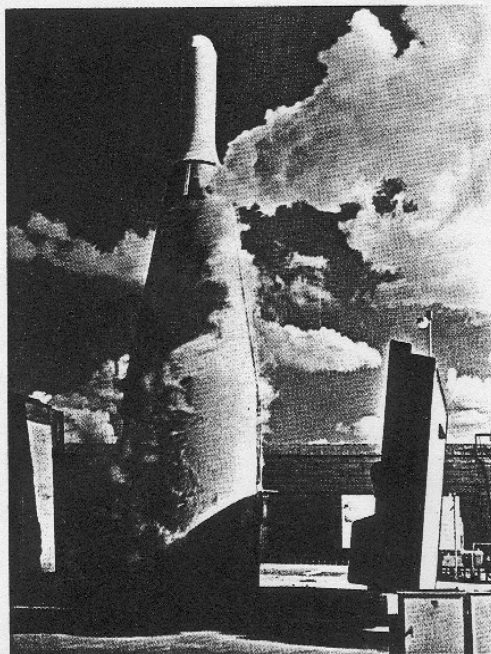
Courtesy, The Boeing Company



SCHILLING'S

M
I
X
E
D

F
O
R
C
E



Atlas "F" Missile

Courtesy, General Dynamics/Astronautics

310th Strategic Aerospace Wing

Schilling Air Force Base is the home of the 310th Strategic Aerospace Wing. Commanded by Colonel Roy C. Crompton, the 310th is a vital component of the Fifteenth Air Force and the Strategic Air Command.

The 310th Bombardment Group (Medium) of World War II, forerunner of the present organization, was activated at Tucson, Arizona on the 15th of March 1942. Flying B-25s, the group trained at several Army Air Force installations in the United States and at Hardwick, England, before going into combat in the Mediterranean area in late 1942.

From November 1942 until the end of the war the 310th Bombardment Group operated in the Tunisian, Sicilian and Italian Campaigns and occupied ten different bases in doing so. Nine hundred and eighty four (984) missions were credited to this group which dropped 23,984 tons of bombs on enemy shipping, marshaling yards, bomb dumps and other targets.

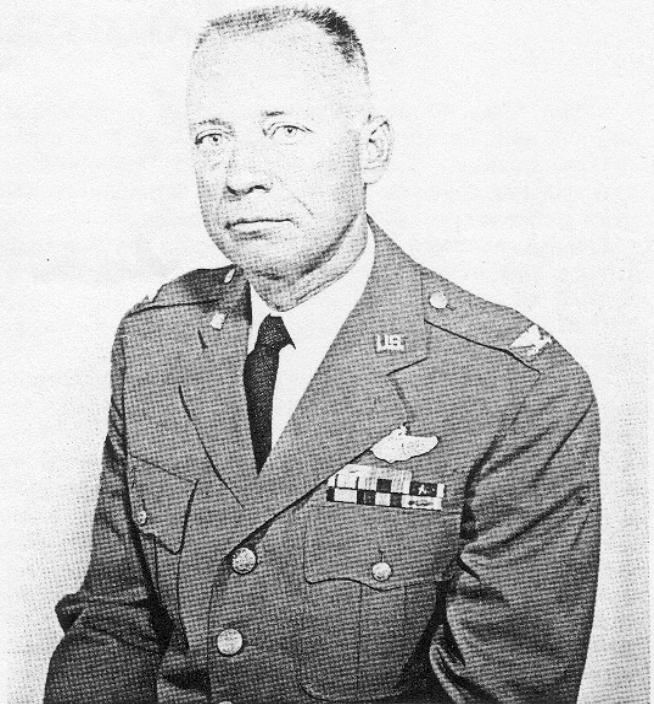
Two Distinguished Unit Citations were received for action against the key transportation center at Venevento, Italy, on the 27th of August 1943 and against Ora-Bozzolo, Italy, on March 10, 1945. Battle honors were received for operations in Tunisia, Southern France, Sicily, Po Valley, North Appenines, Naples Foggia and Rome-Arno.

On September 12, 1945 the Group was inactivated at Pomigliano, Italy. In 1946 it was reactivated at Bedford, Massachusetts, as part of the Organized Reserve Corps and was inactivated again in June of 1949.

The present 310th Wing was activated in March of 1952 at Forbes Air Force Base and moved shortly thereafter to its present location at Schilling Air Force Base.

Since its arrival here in 1952, the 310th has continued to fulfill its role in the defense structure of this nation and the deterrent power of the Strategic Air Command.

With the addition of the 550th Strategic Missile Squadron and the proposed assignment of B-52 aircraft, the 310th Bombardment Wing was officially redesigned as the 310th Strategic Aerospace Wing in March of 1962.



COLONEL ROY C. CROMPTON
Commander
310th Strategic Aerospace Wing

The Wing is composed of four operations squadrons. They include three B-47 bombardment squadrons; the 379th, 380th, 381st and the 310th Air Refueling Squadron. Other organizations, in addition to numerous staff agencies directly under control of the 210th are: 310th Wing Headquarters Sq., Field Maintenance Sq., Armament and Electronics Maintenance Sq., Organizational Maintenance Sq., and the 36th Munitions Maintenance Sq.

The 310th has the organization and equipment necessary to perform its assigned mission on a global scale. But more important are the officers and men whose professionalism and dedication continue to maintain the Wing's tradition of enviable performance.



Aerial view of flight line.

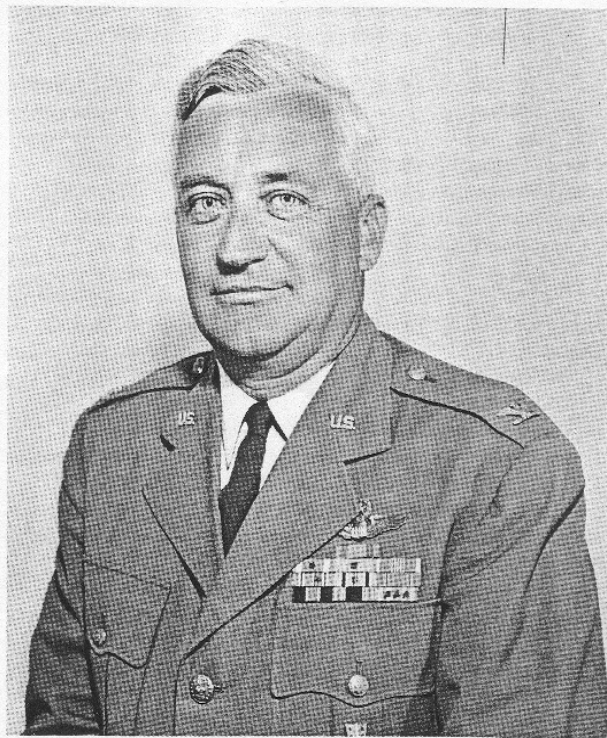
310th Combat Support Group

The 310th Combat Support Group is Schilling's support unit. Commanded by Colonel John F. Scanlan, the organization provides all the physical facilities and supplies required by the tactical organizations for peak performance. It is somewhat analogous to a municipal government in that it maintains the buildings, streets and grounds, provides utilities, supplies, religious, educational and recreational facilities, and a host of other things necessary for wholesome community living.

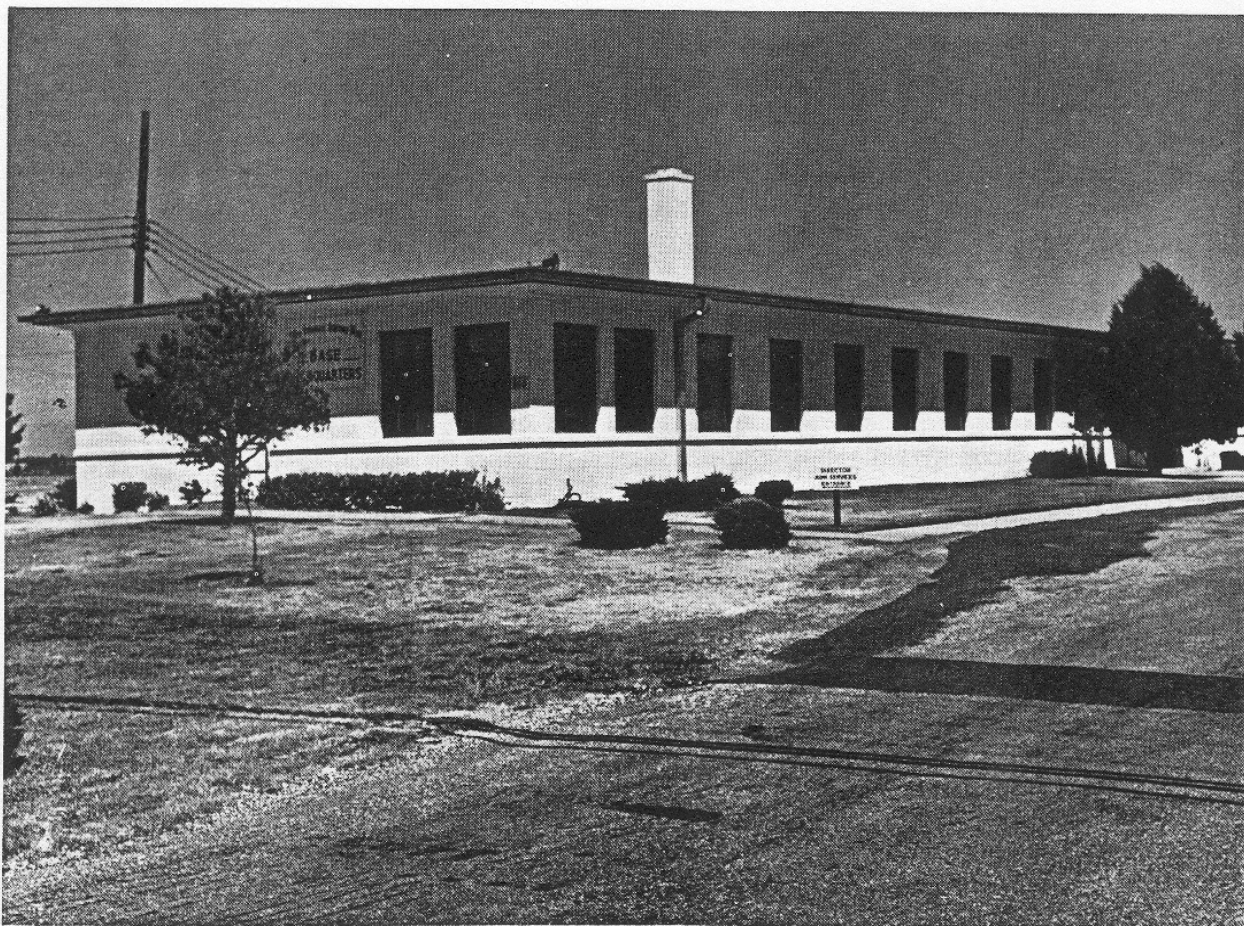
Included in its city-like services is the complex of exchange facilities available to military men and their dependents.

Among the most important morale factors on any base are fine food and good living quarters. On both of these counts, Schilling is among the best. Our dining halls, clubs and cafeterias serve excellent food. Our dormitories and day rooms are show places. Quarters available for families are as good as one can find on any Air Force Base. But the Combat Support Group provides more than the physical necessities. It is concerned with the whole man — physical, mental, moral, spiritual and cultural. Schilling has programs and facilities for the full development of each.

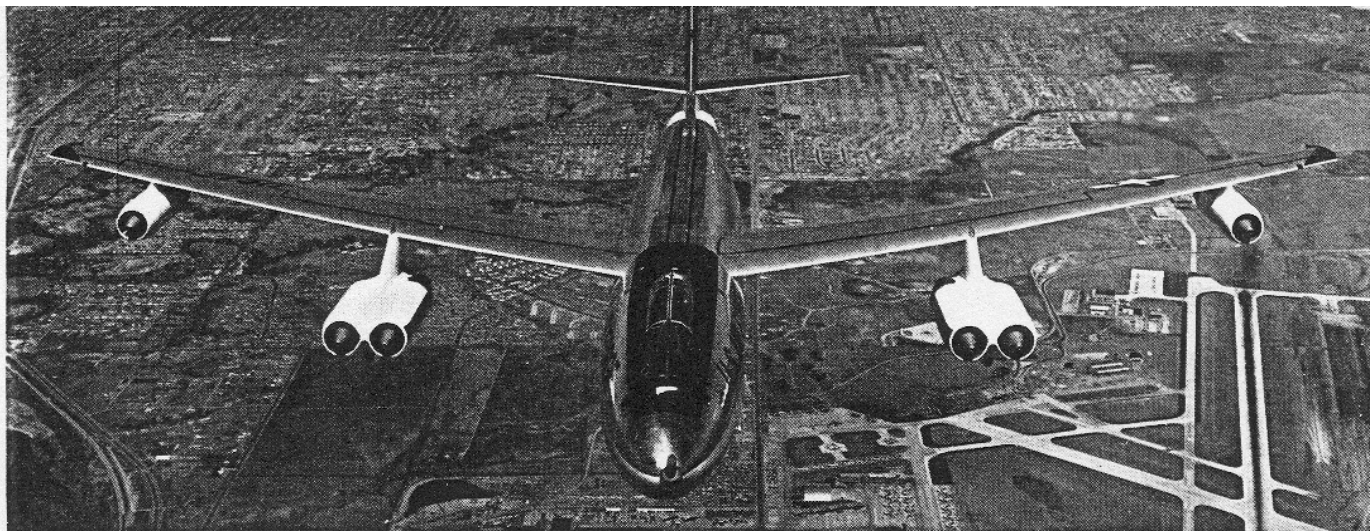
Second only to the support of our tactical organizations, is the Group's principle that the man who lives best, works best. Fine performance in both of these areas is a long standing tradition of the 310th Combat Support Group.



COLONEL JOHN F. SCANLAN



Base Headquarters



B-47 in flight

Courtesy, The Boeing Company

The Bombardment Squadrons

Schilling's three medium bombardment squadrons — the 379th, 380th, and 381st — are equipped with B-47E aircraft. Operational in SAC since the late 1940s, the B-47 has a three-man crew and is capable of speeds in excess of 600 mph and a ceiling above 40,000 feet.

The 310th Strategic Aerospace Wing, materially assisted by the professionalism of the bombardment squadron crews, has maintained a constant operational capability with B-47 bombers since 1953.

With a capability of finding its target in any weather, day or night, Schilling's B-47s are a vital component of the Strategic Air Command's "Power for Peace."

The 1000th B-47 produced by the Boeing Company in Wichita, Kan., was delivered to Schilling 17 Dec. 1954 and christened "City of Salina."

City of Salina

Courtesy, The Boeing Company





Christening of "City of Salina II."

310th Air Refueling Squadron

Arrival of the 310th Air Refueling Squadron's first KC-135 on 7 March 1964, marked the first time these giant "Stratotankers" had been based in Kansas. Christened "City of Salina II," it was joined by other KC-135s to provide Schilling's bombers, as well as those from other bases, with jet-to-jet aerial refueling. This means that SAC bombers could take on a full load of fuel without reducing speed, changing direction or descending to altitudes where they consume fuel at a much faster rate.

The KC-135 is capable of speeds in excess of 600 miles an hour and altitudes above 50,000 feet. It can carry 40 tons of fuel for off-loading, about three times as much as the KC-97 it replaced.

Like the bomber crews, and the men who maintain our aircraft, the men of the 310th ARS take pride in traditionally fine performance.



One of the KC-135 Fleet.

550th Strategic Missile Squadron

The 550th Strategic Missile Squadron is justifiably proud of its past.

Currently commanded by Colonel John R. King, the 550th was originally designated as the 550th Heavy Bombardment Squadron. The unit was activated in December 1942 at Davis-Monthan Field, Tucson, Arizona and completed its training as a B-17 unit in April 1943. It left the ZI in early July that year enroute to Great Ashfield, Suffolk, England, the squadron's only overseas station during World War II.

During its oversea tour, the 550th played a vital role in neutralizing enemy strategic targets in Germany, Belgium, France and Norway.

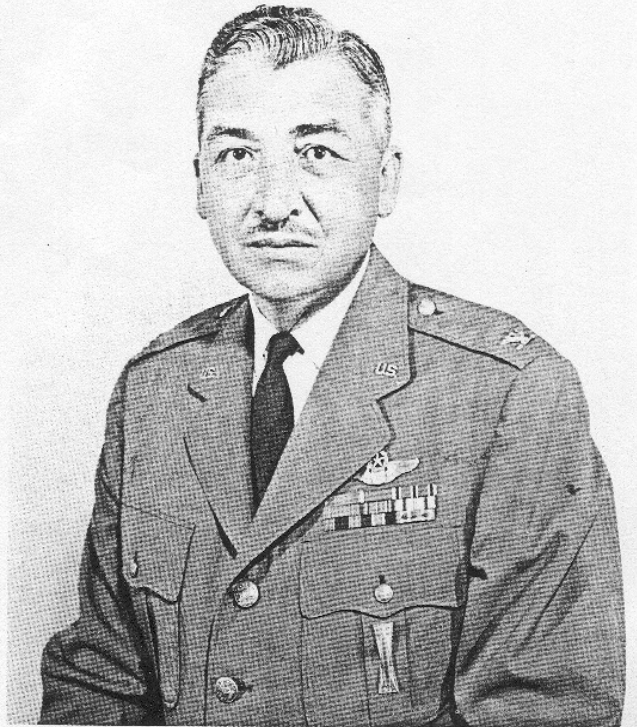
Before returning to the ZI in 1945, the 550th engaged in a series of humanitarian missions dropping food and other supplies to the needy civilians in Holland and in returning liberated French prisoners of war to their homeland.

After being redesignated as a very heavy bombardment squadron in August 1947, the unit was inactivated in June 1949.

On 22 July 1960 the 550th was redesignated the 550th Strategic Missile Squadron and assigned to the Strategic Air Command. Subsequently, in April 1961, it was assigned to the 310th Bombardment Wing at Schilling Air Force Base.

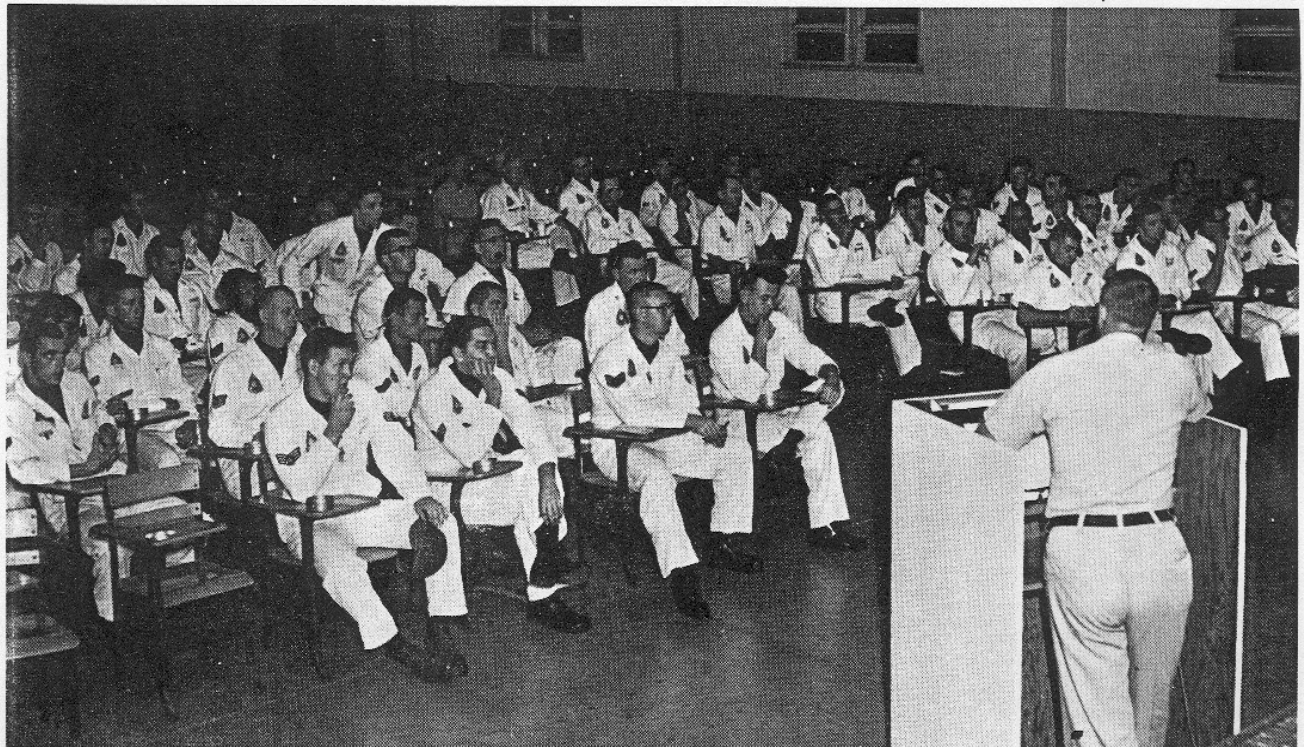
Work was started on its 12 Atlas missile complexes in 1959 and the squadron was declared 'Operationally Ready' in October of 1962 after the sites were accepted from the contractor in formal ceremonies on 13 September of that year. The 550th was the nation's first squadron to have hardened underground silo complexes equipped with missiles capable of striking targets more than 6,000 miles away.

With its crews of highly trained and dedicated officers and airmen, the 550th Strategic Missile Squadron is a vital component of SAC's mixed deterrent force of bombers, tankers and missiles.



COLONEL JOHN R. KING
Commander
550th Strategic Missile Squadron

Daily missile crew briefing





The Community Center

a place for
gracious living

PICNIC PALACE (Bldg. 495) Ext. 3976 (Basic grocery items)

Monday through Friday	1100-2100
Saturday	0900-2100
Sunday	1000-2100

SERVICE STATION (Bldg. 495) Ext. 3976

Monday through Friday	0730-1730
Saturday	0900-1730

SNACK BARS

Base Operations (Bldg. 120) Ext. 3567

Monday through Friday	0600-2200
Saturday	0700-2200
Sunday	0700-2200

Ground Training (Bldg. 658) Ext. 3486

Monday through Friday	0630-1430
-----------------------	-----------

Field Maintenance Sq. (Bldg. 847) Ext. 3967

Monday through Thursday	0001-2400
Friday	0700-2300

TAILOR SHOP (Bldg. 350) Ext. 3252

Monday through Friday	0900-1730
Saturday	0900-1300

BASE NEWSPAPER

Schilling's base newspaper, *IMPACT*, is published and delivered every Friday. News items should reach the Directorate of Information before noon Wednesday to be printed in Friday's issue.

As a service, the *IMPACT* carries classified ads free of charge for members of the military and their families. Classified ads must be submitted in writing to the Directorate of Information in building 943. Classified ads can not be accepted by telephone.

Requests for photographs for publication in the newspaper must be made by 1700 hours Monday and must be taken before 1000 hours Tuesday to appear in that week's paper.

BOWLING ALLEY

A modern eight-lane bowling alley and small snack bar is located in building 448, Extension 3535. Both open and league bowling are available. Hours of operation for open bowling are:

Monday	1100-2300
Tuesday	1100-1800
Wednesday	1100-1800
Thursday	1100-1800
Friday	1100-1800
Sat., Sun. & holidays	1200-2400

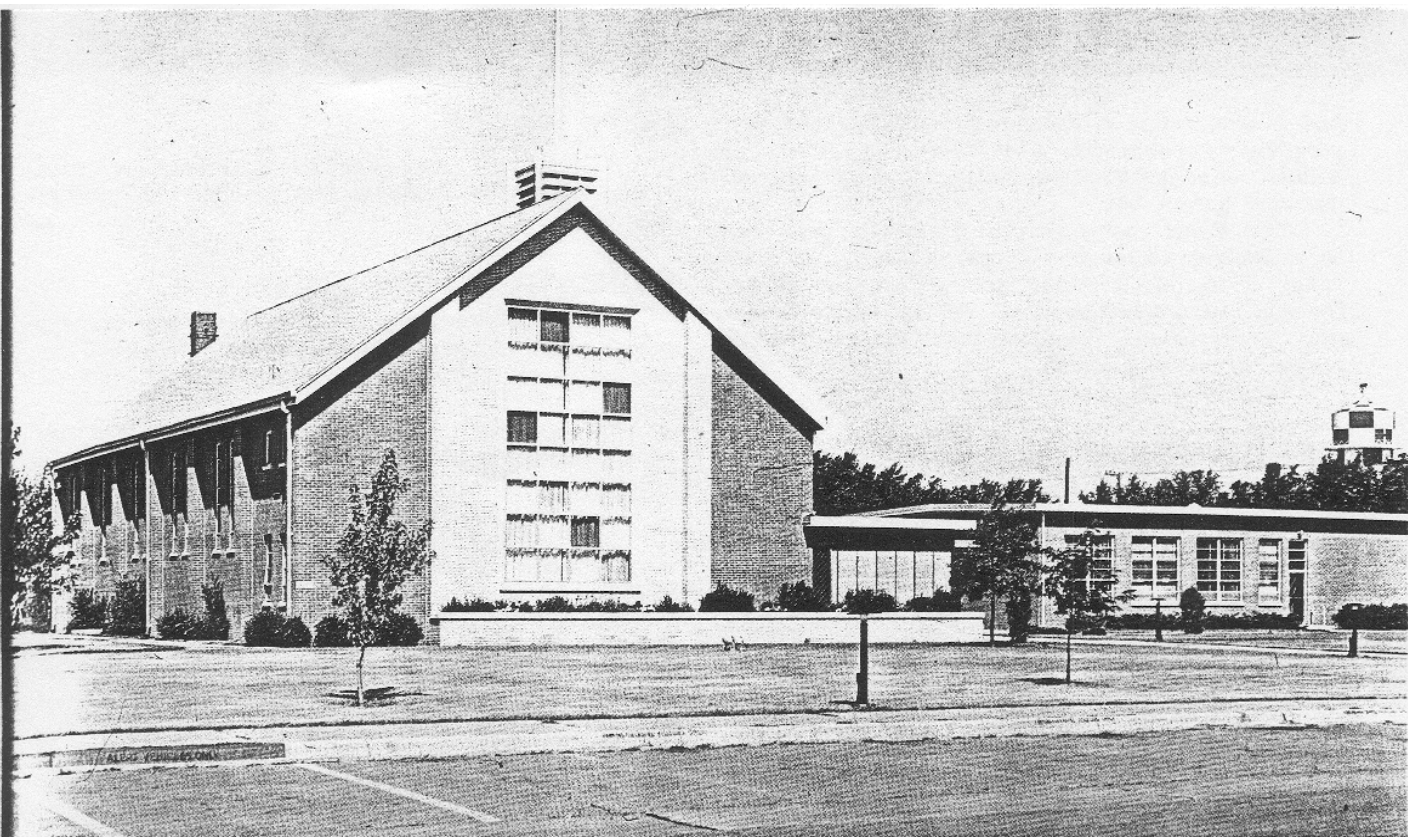
CHAPEL ACTIVITIES

Opportunities for worship and service are plentiful in the Schilling chapel program. A regular schedule of services is provided for members of the Protestant and Catholic faiths, and a coordinator is on the base to assist members of Jewish Faith.

PROTESTANT Sunday activities include worship services at 0900, 1115 and 1830 hours. Sunday School is conducted at 1000 hours in the Religious Education Center next to the chapel.

There are three active choirs, Protestant Junior, Protestant Youth, and Protestant Adult that sing regularly in chapel services. Other programs include active organizations for Protestant youth, Protestant men, and Protestant women.

CATHOLIC Masses on Sunday are celebrated at 0800, 1000 and 1230 hours. Confessions are heard before each Mass and from 1800 to 1900 hours on Saturday. Catechetical instructions (Confraternity of Christian Doctrine) are held in the Religious Education Center on Saturdays at 1000 hours during normal school months.



Religious Center

The Catholic choir for adults sings each Sunday at the 1230 Mass. Catholic youth, Catholic Men and Catholic Women's organizations meet at least once a month on a regular basis.

Personnel of other faiths may contact the Base Chaplain for information concerning local opportunities.

CHECKS, CASHING

Paychecks may be cashed at either the Branch Bank or the NCO Open Mess on paydays.

The Officers' Open Mess also cashes checks for officers.

Money orders may be purchased at the Branch Bank or Post Office.

CLOTHING SALES STORE

This facility is in building 572 opposite Dining Hall #4. Phone Ext. 3245. Hours of operation are 1000 to 1630 hours, Monday through Friday. When payday is on Saturday the store is open from 0900 to 1200 hours.

COMMISSARY

The Commissary is located in Building 448. There is ample parking space and a childrens' play area adjacent to the store. Hours of operation are 1000 to 1800, Monday through Friday and from 1000 to 1400 hours on Saturday.

COMMUNICATIONS SQUADRON, 2028th (AFCS)

The 2028 Communications Squadron, a tenant organization at Schilling AFB, is responsible for all air traffic control operations at Schilling and for providing approach control service to Salina Municipal Airport. The 2028th operates the control tower which is located on the west side of the airport, and the radar approach control (RAPCON) facility, Bldg. 122, which is located just north of Base Operations.

The 2028th Maintenance Shop, Bldg. 127, is located north of the RAPCON and is responsible for the maintenance and operation of the radar, radio communications and navigational aids serving Schilling AFB.

The Commander's Office (Ph. AV 5-3053), Flight Facilities Office (Ph. AV 5-3473) and Orderly Room (Ph. AV 5-3053) are located in Bldg. 122. The Squadron Duty NCO may be reached after duty hours and on weekends at AV 5-3631 for signing on or off base. The Squadron Barracks is located in Bldg. 568, Phone AV 5-3700.

COMMUNITY CENTER

The Community Center, located in Building 365, is open seven days a week. It is open for meetings at 0800 hours. Reservations for meetings must be cleared in advance with the director. Recreational activities are available beginning at 1100 hours each weekday and at 1000 hours on Saturdays, Sundays and holidays. The center closes at 2200 hours except on dance nights when it is open until 2300 hours.

In addition to providing a meeting place for a large number of organizations, the Community Center

has a wide range of scheduled activities. A monthly schedule is published. A typical schedule includes dances, table game tournaments, ping pong, pool, various card games, etc.

Two music rooms provide a place to practice or listen to favorite music. A library, catering to a wide range of tastes, contains several hundred records. Musical instruments available for use in the Community Center include trumpets, saxophones, accordians, pianos, drums and others.

Telephone Extension 3663 or 3579.

CREDIT UNION

Schilling Federal Credit Union is in Building 541. Hours of business are from 0900 to 1500 hours, Monday through Friday. Signature and share loans are available. Share accounts may be opened for each member of the family provided the service member of the family is first a member of the credit union. Telephone extension 3697.

DAILY BULLETIN

The Directorate of Administrative Services, located at Base Headquarters, Bldg. 860, offers the Unofficial Section of the Daily Bulletin for the personal benefit of all personnel. If you desire to advertise articles for sale, personal services for sale, personal property for sale or rent, etc., handcarry or mail your entry to arrive in BDAS prior to 1200 hours in order to have it appear in the Bulletin published for the following day. Requests should be typewritten, original only, be brief and concise, contain the office symbol and telephone extension of the originator, and signed by the individual desiring publication. The Daily Bulletin is delivered to residents in Schilling Manor on the second and fourth Friday of each month. Notices for this Bulletin must arrive in BDAS by 1300 hours on the Wednesday preceding the publication date. The Bulletin is published daily, Monday through Friday each week except holidays.

DUTY HOURS

Normal duty hours at Schilling AFB are the same throughout the year, 0800 to 1700, Monday through Friday.

EDUCATION, OFF DUTY

The Base Education Center provides a continuing program of education offering many and varied opportunities for further learning at all under graduate levels.

An extensive selection of college courses is available to Schilling personnel both on the base and in surrounding communities. All colleges serving the base are fully accredited.

The Schilling Campus of Bethany College, Lindsborg, Kansas, offers a comprehensive undergraduate resident credit program on base with degree completion opportunities afforded through base study alone. Four terms, eight weeks in duration, are offered during the calendar year. Classes meet two nights a week for two and a half hours per session. The Bethany degree program is composed of a core of studies prescribed for all students and a major in liberal arts fields. Supporting courses are chosen by the student in consultation with an advisor from the major department.

Additional college credits may be earned on campus at Kansas Wesleyan University in daytime classes and at Marymount College in evening classes.

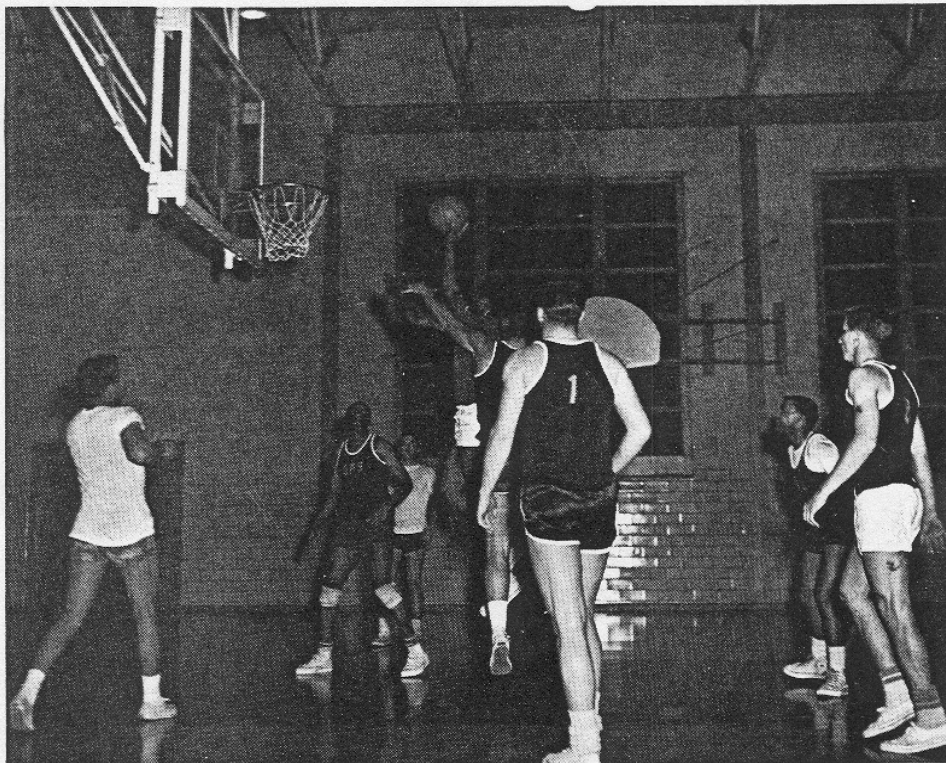
A widely diversified group study program is offered throughout the year in addition to the college program. Courses in this program include college preparatory courses, high school courses and technical-vocational courses. All military personnel are encouraged to participate. The courses are presented at no cost to the student and text materials are furnished for the duration of the course. These courses are usually conducted on a 2½-hour basis two nights a week for eight weeks.

USAFI correspondence courses and cooperation college correspondence courses are available to all



A typical dormitory

Basketball is one of sports enjoyed at Base Gymnasium.



military personnel. ECI courses, for the purpose of raising the skill level of personnel, are available to all military personnel and to Civil Service personnel if certain prerequisites are met.

The testing program covers a broad area of subjects. It includes placement tests, achievement tests, high school GED tests, college GED tests and advanced achievement tests. All tests are used in the counseling program to aid the student in making a wise decision, whether it be academic, vocational or technical.

The Strategic Air Command Educational Achievement Awards are given to both military and civilian personnel upon completion of established requirements and reflect credit upon the initiative and industry of personnel in their educational activities. Appropriate entries concerning these awards are made in pertinent personnel records.

The Education Center is the source of information concerning colleges and universities, college credit for service schools attended, high school diplomas, high school certificates and equivalency, and related phases of academic endeavor. Information is available at the Education Center, Building 558. Ext. 3086.

FAMILY SERVICES

Family Services is a volunteer organization of Air Force wives. It provides aid, service and information to all Air Force personnel and their dependents.

Four times yearly, Family Services presents an orientation. These orientations provide information about Schilling Air Force Base, Salina, Air Force benefits, disaster control, safety, fire prevention and the Family Services Program.

Family Services sponsors CHAP (Children Have A Potential). The program provides counseling concerning the facilities available for treatment of disabled children.

At the Family Services Center, you may obtain base brochures for all Air Force bases, housekeeping items and listings of available private housing.

The Emergency Services Committee provides both child care and transportation in emergency situations. Casualty workers may assist a family during the time of death of a military member or one of his dependents.

Family Services Volunteers personally welcome each new military family to the Salina and Schilling area in the newcomer's home.

Family Services is located in Bldg. 359, Ext. 3993. Hours are from 0800 to 1700 hours, Monday through Friday.

GYMNASIUM

The base gymnasium, located in building 146, offers a wide variety of varsity and intramural sports including basketball, squash, handball, softball, volley ball, tennis and table tennis. The physical conditioning section has a steam room, exercise room and a qualified staff for conducting the 5BX program and exercises in judo and combative measures.

The physical conditioning section is open for testing from 0630 to 1330 hours, Monday through Friday. Other portions of the gymnasium are open from 0600 to 1800 hours, Monday through Friday and from 1300 to 1700 hours on Saturday. Extension 4481.

HOUSEHOLD GOODS

Immediately after arriving at Schilling Air Force Base, personnel expecting household goods, personal effects and/or hold baggage should report in person to Bldg. 843, the Traffic Management Office. There arrangements will be made for transfer of goods to your quarters or to storage. For further information call Extension 3233 or 3941.



Schilling Manor from the air.

HOUSING, ON BASE

Capehart housing totals 735 units; 253 for officers, 1st Lt. and above. Although the waiting period varies, it averages around 20 weeks. There are 482 units for NCOs of SSgt. grade and above. The average waiting time is about 16 weeks. Ext. 3923.

LEGAL ASSISTANCE OFFICE

Professional advice on practically all legal matters is available to military personnel on active duty, retired personnel and their dependents at the Legal Office.

Legal services are free of charge and an attorney-client confidence is strictly maintained. However, regulations prohibit Legal Officers from preparing pleadings in litigated actions or making personal representations in court. The Legal Office is located in Bldg. 860. Ext. 3475.

LIBRARY

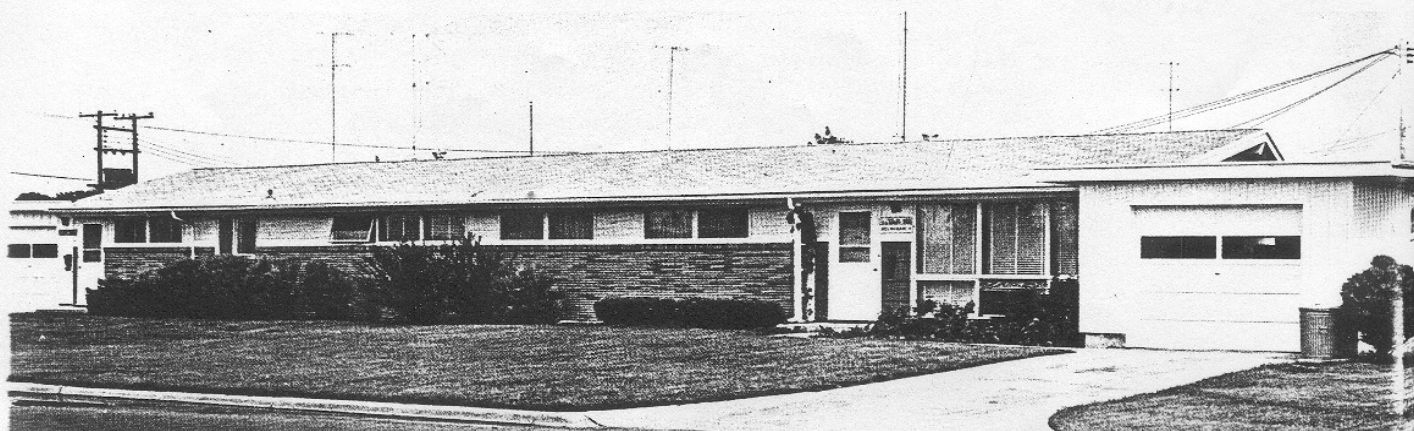
The Base Library, located in Bldg. 359, phone 3675, has a collection of approximately 25,000 books including technical, general interest, fiction and children's books. The facility is open from 1100 to 2200 hours, Monday through Thursday, from 0900 to 1700 hours on Saturday and from 1300 to 1700 on Sunday.

A wide variety of long playing records is also available. The Schilling Room is an area where patrons may listen to their own records or those of the library.

The library may be used as a meeting place for relatively small groups. Arrangements must be made in advance with the librarian.

Military personnel including retired personnel, dependents and civilian employees are invited to use the facility.

Typical NCO and company grade housing



MEDICAL CARE

Schilling Air Force Base is proud of its modern 55-bed hospital. The facility was completed in September 1960 and dedicated by the SAC Surgeon. Central air conditioning, television, and a 'pee wee' exchange are some of the comforts and conveniences provided for patients. The Hospital is fully accredited by the Joint Commission on Accreditation of Hospitals, an assurance that the highest standards of medical care are being maintained.

Specialty clinics and hours of operation are as follows:

CLINICS	HOURS OF OPERATION	APPMT. PHONE
Medical Clinic	Daily	1300-1630 3267
Orthopedic Clinic	Monday, Friday	1000-1200 3267
Pediatric Clinic	Monday, Wednesday, Friday	1300-1630 3267
Allergy Clinic	By appointment	3267
Surgery Clinic	Tuesday, Wednesday, Thursday	1300-1630 3267
Flight Medicine	Daily by appmt.	0800-0900 1300-1400 3325
Optometry Clinic	Daily by appmt.	3026
ENT Clinic	By appointment	3325
Dental Clinic	Daily	0800-0900 1200-1400 3680
Physical Therapy	Daily by referral of a physician	3598
OB-Gyn Clinic	Call for appmt.	3975

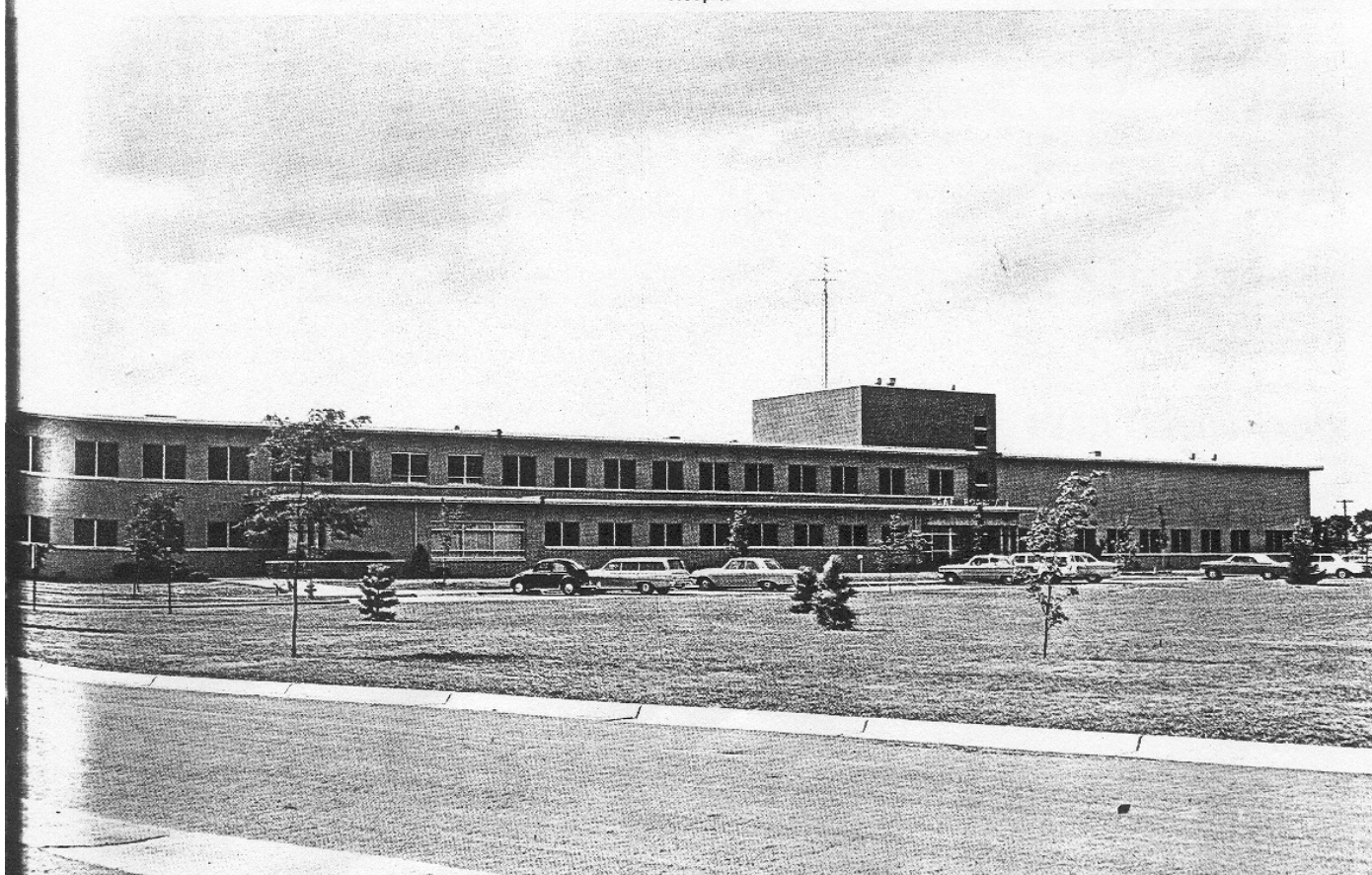
All family members requiring medical care must present a military dependent's identification card at the reception desk. The Hospital Registrar, phone 3042, has full information regarding medical care in the civilian community.



Personal attention in the Heir Room.

The Dental Clinic is located in building 656 on D Avenue just north of the warehouse area. Military personnel may report to the Clinic between 0800 and 0900 hours and between 1230 and 1330 hours, Monday through Friday. Dependent dental care is limited to emergency treatment only. Call 3680 for appointments.

Hospital





Ball Room, NCO Open Mess

NCO OPEN MESS

The NCO Open Mess is located in building 440, just north of the Base Theatre. With its dining room, cocktail lounge, TV lounge and newly-decorated ballroom, it is the center of social activity for non-commissioned officers and their families. Breakfast, lunch and dinner are served seven days a week. Information concerning attire, hours of operation and special activities is available in the monthly club calendar and the weekly base newspaper. Private and squadron parties can be arranged with the club secretary. All NCOs are encouraged to become members and actively support their Open Mess.

NCO WIVES' CLUB

The club holds its business luncheon meeting the first Tuesday of each month. Card day is the second Tuesday and a social or other activity is scheduled each third Tuesday. A board meeting is held during the fourth week.

Wives of all NCO Club members are encouraged to join. Newcomers are cordially invited to attend periodic events. All meetings are at 1330 hours in the NCO Open Mess.

NURSERY

The base nursery, located in Building 65, takes care of children between the ages of 6 months and 14 years. It is equipped with recreational facilities, beds and other items necessary for the care of young children. Rates are reasonable: one child 35 cents, two children 50 cents and three children 65 cents per hour.

Hours of operation are:

Monday through Thursday	0730-1730
Friday	1730-0100
Saturday	1200-0100
Sunday	0730-1300
Sunday	1800-2300

Call extension 3568 if more information is desired.

OFFICERS' OPEN MESS

Located just west of the main gate and directly across the street from the BOQ, the Officers' Open Mess is the main social gathering point for Schilling officers and their families. Besides the spacious ballroom, dining room and cocktail lounge, several other rooms are available for private and squadron parties. The outside swimming pool and patio are favorite meeting places during the summer. Breakfast, lunch and dinner are served in the club seven days a week. Information concerning attire, hours of operation and special activities is available through the monthly club calendar and the base newspaper. All officers are encouraged to join the club and make use of its fine facilities.

OFFICERS' WIVES CLUB

The Officers' Wives Club is open to the wives of all Schilling officers. Meetings are held every Wednesday. The OWC Board meets the first Wednesday of the month. The second Wednesday, reserved for greeting newcomers, is an informal and enjoyable get-together to renew old acquaintances, welcome new arrivals and bid farewell to departees. On the third Wednesday, the program calls for a luncheon with excellent entertainment. The program runs from style

shows to informative panels to varied musical entertainment. The last Wednesday is reserved for game day. This is a pleasant afternoon of bridge or canasta and talk. The OWC also has an active duplicate bridge group meeting several times a month.

PASSES AND IDENTIFICATION

The Pass and Identification Office, building 944, prepares and issues passes and identification to those concerned. These include Armed Forces ID cards to military members, identification and privilege cards to military dependents 10 years of age and older and restricted area badges to military personnel authorized to enter restricted areas.

PERSONAL AFFAIRS

The Personal Affairs Office provides counseling to Air Force personnel and their dependents on medical care, insurance, estate planning, overseas travel and in-service loans. The Personal Affairs Office also has information on voting, state bonuses, social security and the Retired Serviceman's Family Protection Plan.

Personal Affairs is located in the Directorate of Personnel in Bldg. 945. Extension 3061 or 4438.

PETS

The base Veterinary Zoonosis Control Clinic is located in building 682. Immunization clinics are held each Monday and Thursday morning from 0800 to 1000 hours by appointment. Appointments may be made by calling Extension 3344. The purpose of this clinic is to immunize pets of military personnel against diseases that may be transmissible to man. All pets of personnel residing in on-base housing must be registered with the base Veterinarian.

Pets of personnel living off-base should be registered with the city of Salina or Saline County depending upon location of residence. Pets are not allowed to run loose in the housing area or on the base.

PROCESSING IN

Incoming personnel should bring all official records in their possession to building 944 at 0800 hours, Monday, Wednesday or Friday following their arrival. Complete one-stop incoming processing will be accomplished at this place. During your processing in, a sponsor will be assigned to assist you with processing into your unit of assignment.

RECREATION SERVICES SUPPLY

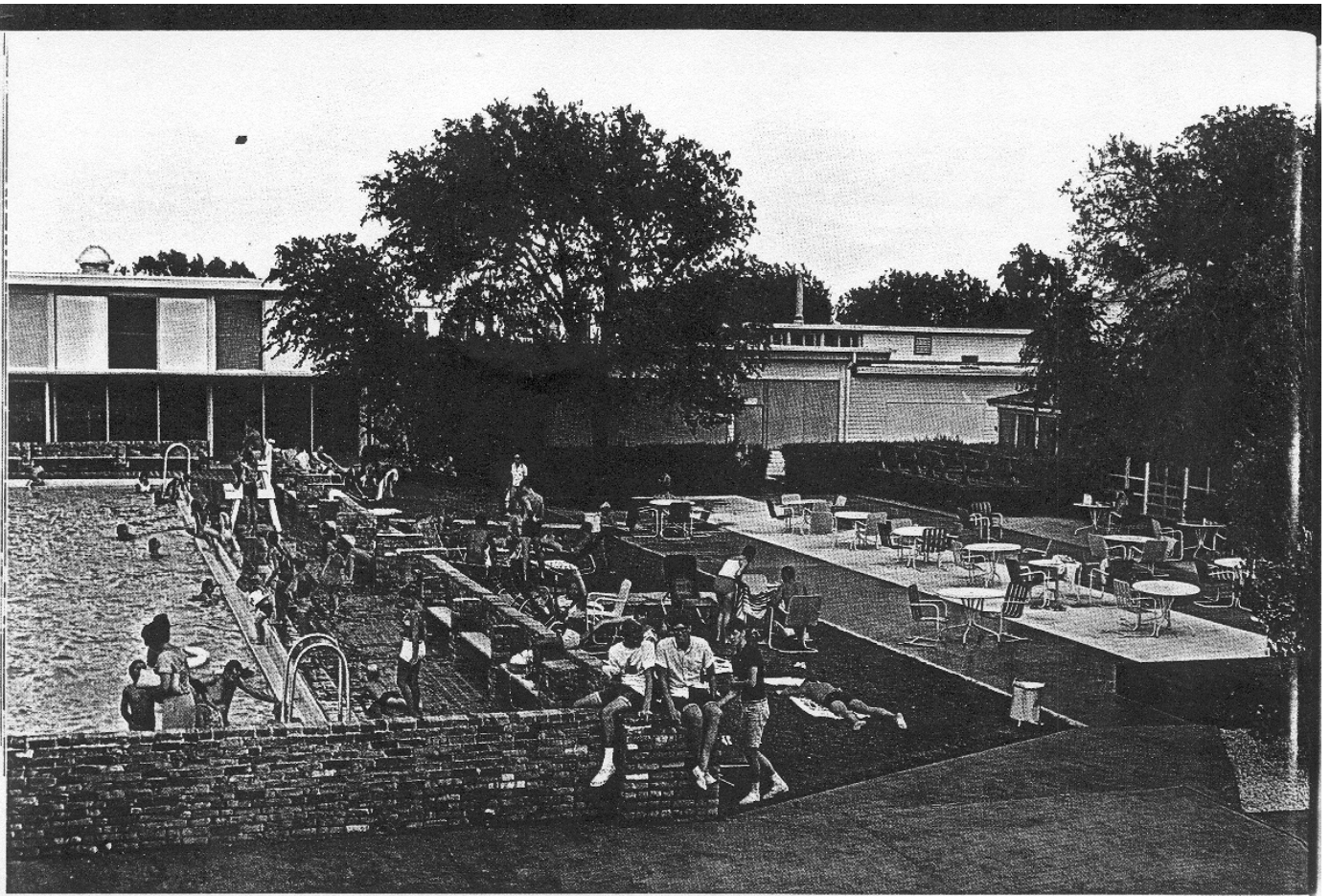
Recreation Services Supply, located in Building 516, has a variety of recreation equipment for issue on loan and rental basis. Boats, motors, trailers and guns are for rent. Golf clubs, fishing equipment, etc., are available on a loan basis to military personnel. Hours of operation are 1330 to 1700 hours, Monday through Friday. Extension 3032.

RED CROSS

The American Red Cross maintains a Field Director's office at Schilling AFB for the purpose of assisting members of the military and their dependents in time of need. The office is located in the Youth Center, building 245 and is open from 0800 to 1700 hours, Monday through Friday. In case of emergency, the Red Cross worker can be located by calling the base telephone operator during after-duty hours and on weekends and holidays, 24 hours a day. The American Red Cross does give financial assistance in the form of interest free loans or grants for emergency situations, and provides emergency communications service. There is no charge for services. Extensions 3029, 3083.



Terrace Room, Officers' Open Mess



Officers' swimming pool



Airmen's swimming pool